

Maximum Flow rate: 17 l/h • Maximum Pressure: 10 kg/cm²g • Electro Magnetically Actuated Diaphragm

Technical characteristics

Standard:

- Flow rate up to: 17 l/h
- Pressure up to: 10 kg/cm²g
- Manual/automatic speed control adjustable while running or stopped.
- Electronically operated Mechanically actuated diaphragm
- Manual stroke length adjustable while running
- Electro Magnetic Drive: Less moving parts.
- Composite PTFE faced Hypalon Diaphragm for longer life
- Adjustment of flow rate while running or stopped: from 0 to 100%
- Accuracy: ± 2% of rated flow from 10% to 100% stroke
- Suction lift: up to 1.5 m water max.
- Viscosity handled: up to 50 cp



Series B Dosing Pump

Characteristics of drive

Standard Drive Data

- Electromagnetic Power Unit (EPU) 230V, 50Hz / 60HZ, Single Phase AC
- Power Consumption Approx. 75 Watts.
- “9” series are automated pumps (i.e. 4-20mA)
- 9E (Enhanced) Pumps have digital display, internal or external mode select, mA input, pulse control, low-level shutoff with alarm output and over voltage protection

Accessories

To meet your installation needs a large range of accessories are available on request (Pulsation dampeners, safety and backpressure valves), consult us.

Liquid end construction

Components	Materials			
	PP	PVC	PVDF	SS-316
Liquid end body	PP	PVC	PVDF	SS-316
Valve body	PVC	PVC	PVDF	SS-316
Ring Seal	TEFLON	TEFLON	TEFLON	TEFLON
Balls	CERAMIC	CERAMIC	CERAMIC	CERAMIC
Connections	PVC	PVC	PVDF	SS-316
Diaphragm	TEFLON FACED HYPALON	TEFLON FACED HYPALON	TEFLON FACED HYPALON	TEFLON FACED HYPALON
Foot Valve	PVC	PVC	N/A*	SS-316
Antisiphon valve	PVC	PVC	PVDF	SS-316
Tubing	LDPE	LDPE	LDPE	LDPE

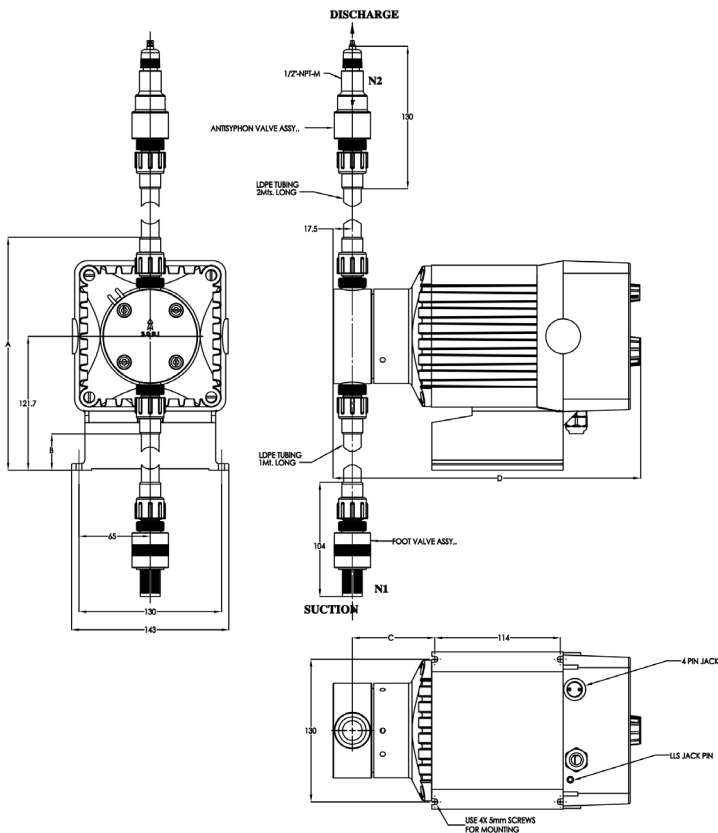
*Alloy 20 available based on customer request

*Online Strainer shall be offered for PVDF

Performance

Pump model	Flow max. (l/h)		Pressure max. (KG/CM ²)	Size of Tubing (Suction & Discharge) [OD x ID]
	Min (l/h)	Max (l/h)		
B-12X	0.010	10	4	3/8" x 1/4"
B-11, B-71, B-91, B-91-E	0.06	6	10	3/8" x 1/4"
B-12, B-72, B-92, B-92-E	0.095	9.5	7	3/8" x 1/4"
B-13, B-73, B-93, B-93-E	0.17	17	3.5	1/2" x 3/8"

Dimensions & Connections



Dimensions (mm)		
Pump model	A	B
B-11/B-71/B-12/B-72/B-12X	210	37
B-13/B-73	210	30

WEIGHT

Liquid End	Weight (kg)
Metallic	6
Plastic	5.5

Ingersoll Rand Inc. (NYSE:IR), driven by an entrepreneurial spirit and ownership mindset, is dedicated to helping make life better for our employees, customers and communities. Customers lean on us for our technology-driven excellence in mission-critical flow creation and industrial solutions across 40+ respected brands where our products and services excel in the most complex and harsh conditions. Our employees develop customers for life through their daily commitment to expertise, productivity and efficiency. For more information, visit www.IRco.com



miltonroy.com

Literature #59192.02 rev 10/2022
© 2018 Milton Roy, LLC. All Rights Reserved.

