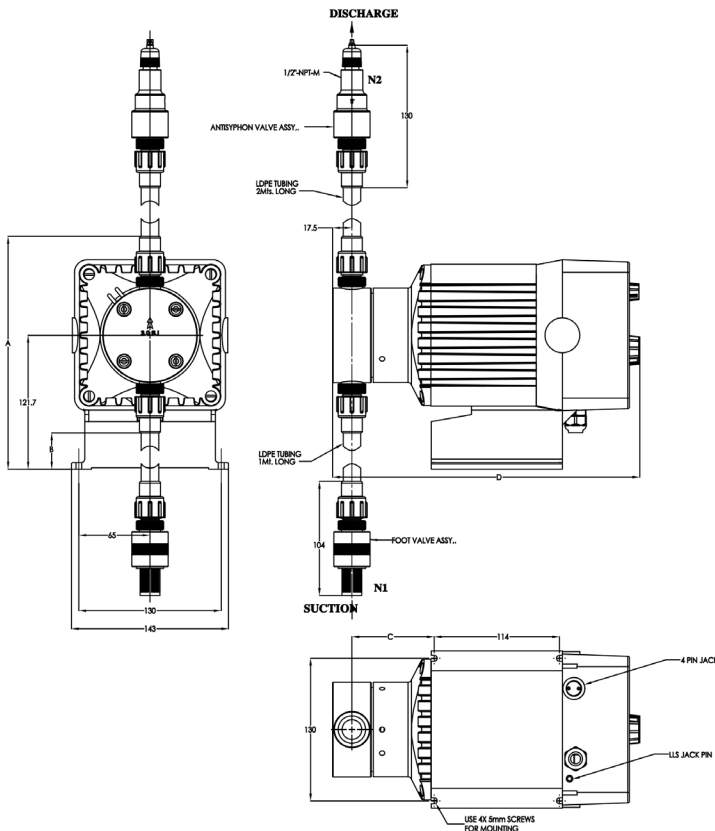


Performance

Pump model	Flow max. (l/h)		Pressure max. (KG/CM ²)	Size of Tubing (Suction & Discharge) [OD x ID]
	Min (l/h)	Max (l/h)		
D-10, D-70, D-90, D-90-E	0.05	5	18	3/8" x 1/4"
D-11, D-71, D-91, D-91-E	0.1	12	9	1/2" x 3/8"
D-12, D-72, D-92, D-92-E	0.15	17	7	1/2" x 3/8"
D-13, D-73, D-93, D-93-E	0.25	35	4	1/2" x 3/8"
D-14, D-74, D-94, D-94-E	0.6	90	1.5	1/2" x 3/8"

Dimensions & Connections



Dimensions (mm)

Pump model	A	B	C	D
D-10, D-70, D-90, D-90-E	278	210	88	118
D-11, D-71, D-91, D-91-E				
D-12, D-72, D-92, D-92-E				
D-13, D-73, D-93, D-93-E				
D-14, D-74, D-94, D-94-E	295	235	105	118

WEIGHT

Pump Model	Metallic	Plastic
D-10, D-70, D-90, D-90-E	9	8.5
D-11, D-71, D-91, D-91-E		
D-12, D-72, D-92, D-92-E		
D-13, D-73, D-93, D-93-E		
D-14, D-74, D-94, D-94-E	10.5	9

Ingersoll Rand Inc. (NYSE:IR), driven by an entrepreneurial spirit and ownership mindset, is dedicated to helping make life better for our employees, customers and communities. Customers lean on us for our technology-driven excellence in mission-critical flow creation and industrial solutions across 40+ respected brands where our products and services excel in the most complex and harsh conditions. Our employees develop customers for life through their daily commitment to expertise, productivity and efficiency. For more information, visit www.IRco.com



miltonroy.com

MRI-LMI D-003

© 2018 Milton Roy, LLC. All Rights Reserved.



An Ingersoll Rand Business