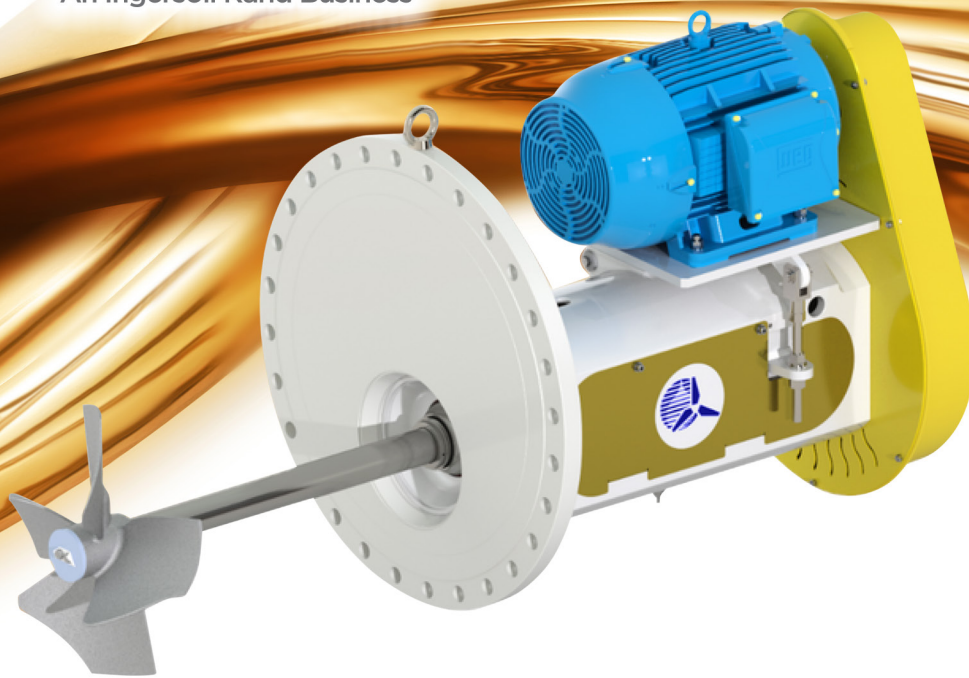




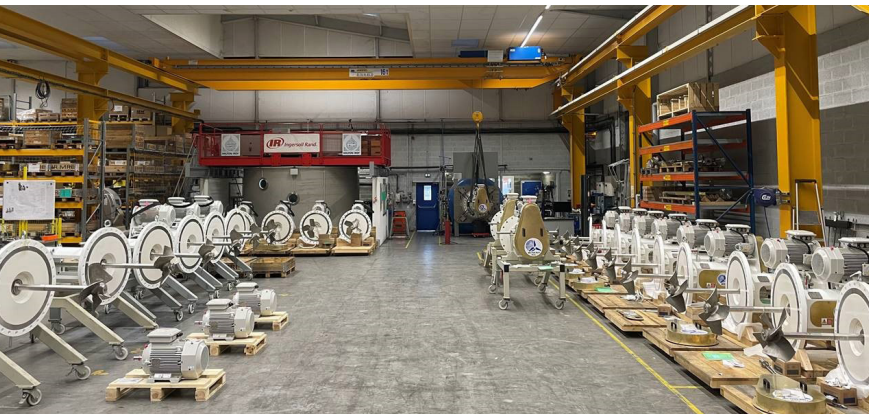
MILTON ROY® Mixing

An Ingersoll Rand Business



Compact. Powerful. Consistent Results.

Milton Roy Mixing has developed a specific range of side-entry agitators for large-capacity storage tanks. Designed specifically for mounting on the wall at the base of the tank, this agitator is compact and energy-efficient. Its Sabre impeller enables quick and easy installation and guarantees optimum mixing. Its exclusive static sealing system makes maintenance quick, easy and reliable, without having to drain the tank.



Main Applications

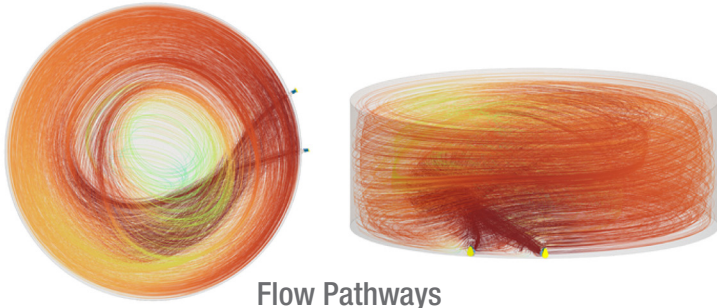
- BS&W Control in Crude and Condensates
- Blending
- Homogeneity
- Temperature Uniformity
- Crude Finishing
- Destratification

Products

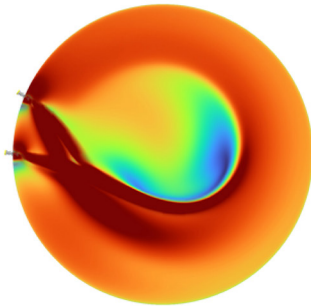
- Crude oil
- Refined by-products
 - Gasoline
 - Fuel oil
 - Diesel
 - Kerosene
- Bitumen and Naphthalene
- Bioethanol, Biodiesel and Condensate
- SAF
- Lubricant, Oil and Solvents
- Effluent/Water



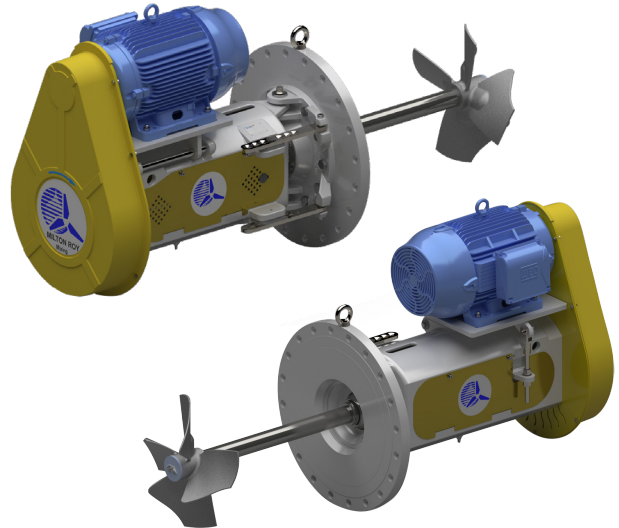
Side Entry Mixers



Flow Pathways



Velocity Distribution



Design Excellence

- Belt or gear driven
- Easy installation and maintenance
- High powered 4-blade Sabre impeller for greater flow
- Powergrip® GT4 Carbon or Eagle PD1® Drive - High quality belts
- Consistent agitation performance
- CFD (Computational Fluid Dynamics) analysis ensures the best mixing results
- Operating temperatures up to 250 °C / 480 °F
- Modular design
- Easy belt tensioning
- Test tank

Competitive Advantages

- Easy installation and maintenance
- Shorter mixing times
- Sabre impeller designed for larger tank volumes
- Turret design housing allows for ease of maintenance
- Long product life
- Short delivery lead-times
- Energy savings

Main Features

- From 100 to 210,000 m³ / 629 to 1.3 MM Barrels
- Rapid positive sealing device
- 316L S.S. transmission parts
- Single mechanical seal (cartridge)
- Carbon steel impeller
- Variable or fixed angle

Optional Features

- Dual mechanical seal for leak prevention and emission control
- 316L S.S. or Duplex impeller
- Axis eccentricity
- Agitator shaft on flange

Standards of Excellence

- ISO 50001
- ISO 14001
- OHSAS
- ATEX / UL Compliance

Electrical Features

- Power from 7.5 to 55 kW / 10 to 75 HP
- IEC or NEMA motors as standard
- 50/60 Hz
- TEFC, Ex-Proof, IEEE-841 available

Powergrip is a registered trademark of Gates.

Eagle PD is a trademark of Goodyear Rubber Products, Inc.

Milton Roy Mixing® is a trademark of Ingersoll Rand®.

Ingersoll Rand Inc. (NYSE:IR), driven by an entrepreneurial spirit and ownership mindset, is committed to helping make life better. We provide innovative and mission-critical industrial, energy, medical and specialty vehicle products and services across 40+ respected brands designed to excel in even the most complex and harsh conditions where downtime is especially costly. Our employees connect to customers for life by delivering proven expertise, productivity and efficiency improvements. For more information, visit www.IRCO.com.



miltonroymixing.com

Literature #IR-MRM823011_EN 02/2025

©2014 Milton Roy, LLC. All rights reserved for modification without prior notice.

