



# FLOMAX 8 SS Double Seal

## 2" x 2" 316 SS Self-Priming Centrifugal Pump

The FLOMAX® 8 Self-Priming Centrifugal Pump, crafted from premium 316 stainless steel, is engineered to withstand demanding conditions across multiple sectors such as agriculture, industrial operations, OEM systems, and marine environments. Its robust stainless-steel construction delivers superior corrosion resistance and durability, making it well-suited for handling abrasive or corrosive liquids.

A key advantage of the FLOMAX® 8 is its self-priming functionality. The pump can generate enough vacuum to lift fluids from depths of up to 25 feet (7.6 m). Once primed, an integrated flapper valve retains a full liquid column in the suction line, ensuring smooth and uninterrupted performance—an essential feature for applications requiring consistent flow.

This model offers flexible drive compatibility, supporting hydraulic motors, NEMA 56C and 145TC frame motors (with IEC equivalents depending on specifications), gas engines, and other options. Such versatility allows customization for both stationary and mobile setups. Additionally, the pump is available in the PumPAK® configuration a fully assembled, tested pump end designed for quick coupling with various drivers.

The FLOMAX 8 SS Double Seal model is certified with ABS Type Approval.

### SPECIFICATIONS:

<b>Suction / Discharge</b>	<b>Suction:</b> 2" NPT 150# Class Flat Flange <b>Discharge:</b> 2" ANSI 4-bolt flange connection, Part number for Optional Discharge Flange Kit: MP36607
<b>Flow</b>	Up to 170 GPM (38.6 m <sup>3</sup> /h)
<b>Head Feet</b>	Up to 130' (39.6 m)
<b>Impeller</b>	4.88 (123.95 mm) Max Diameter Semi open impeller
<b>Seal</b>	Type 31 Silicon Carbide/ Silicon Carbide
<b>Drive Options</b>	Close Coupled to 56C Close coupled to 145TC Close Coupled to 184C Engine Mount Hydraulic Drive Pedestal Mount PumPAK® (without motor)
<b>Options</b>	5 blade impeller for higher flows Available 2" NPT ANSI 150# class discharge flange kit (p/n: MP36607) Hydraulic motor .37 cu. in. (6,0 cm <sup>3</sup> ) Hydraulic motor .45 cu. in. (7,4 cm <sup>3</sup> ) Hydraulic motor .58 cu. in. (9,5 cm <sup>3</sup> )

### Features

- ABS Type Approved

### Application

- Agricultural
- Commercial
- Industrial
- OEM



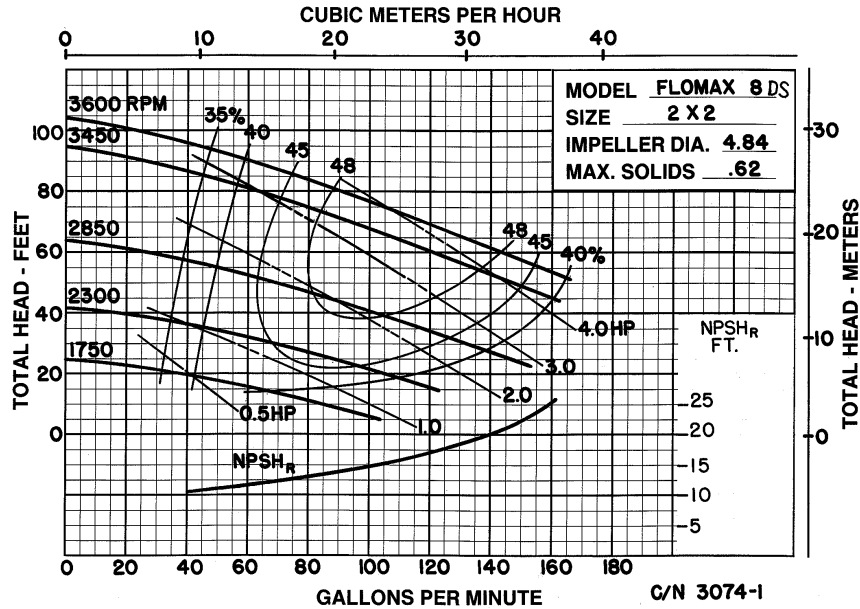
12500 South Pulaski Road  
Alsip, IL 60803, USA  
Phone (800) 563-8006



An Ingersoll Rand Business

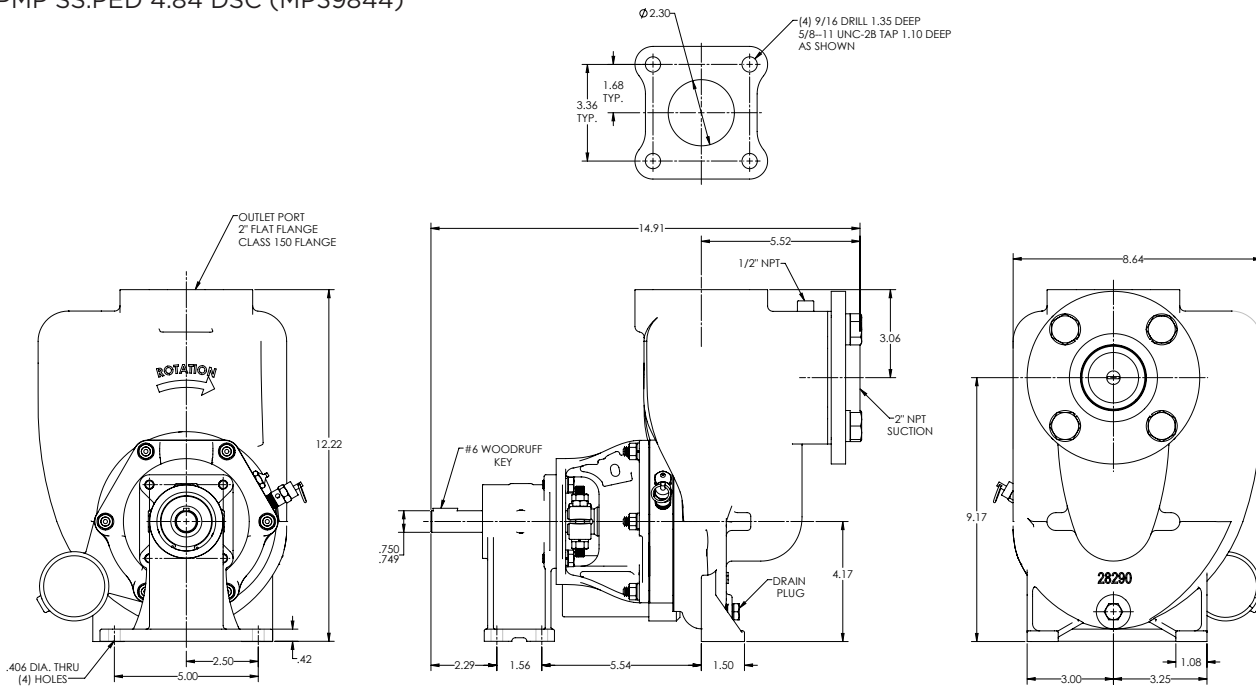
# FLOMAX 8 SS Double Seal

## PERFORMANCE CURVES



## DIMENSIONS

FM8PMP SS:PED 4.84 DSC (MP39844)



\* For complete parts lists and troubleshooting guidance, please refer to the MP Pumps Installation Operation & Maintenance (IOM) Manual.



12500 South Pulaski Road  
Alsip, IL 60803, USA  
Phone (800) 563-8006