

CHEMFLO 4 Hydraulic

2" x 1-1/2" End Suction Centrifugal Pump

Made with high quality investment cast 316 stainless steel components, the ChemFlo® series of pumps are designed to be applied in a wide range of pumping applications where stainless steel is required.

The ChemFlo® 4 hydraulic pumps utilize a semi-open impeller design to allow for passage of larger solid sizes than similar sized enclosed impellers. Enclosed impeller options are available for higher efficiency performance. Several seal options are available in addition to the standard type 2100 carbon / ceramic / Viton mechanical seal.

ChemFlo® 4 hydraulic pumps are offered with .22 or .37 cubic inch (3.60 cm³ or 6.06 cm³) displacement SAE port fitting gerotor type motors for hydraulic flows up to 10 GPM (2.27 m³/h) and a maximum pressure of 2500 PSI (172 bar).

SPECIFICATIONS:

Suction / Discharge	2" x 1-1/2" NPT
Materials of Construction	316 stainless steel, CFB (nickel aluminum bronze)
Flow	Up to 220 GPM (50 m ³ /h)
Head Feet	Up to 205' (62.4 m)
Impeller	4.5" (114.3 mm) semi-open, cast 316 stainless steel
Drive Options	Hydraulic motor .22 cu. in (3.6 cm ³) Hydraulic motor .37 cu. in. (6 cm ³)
Seal	Standard carbon / ceramic / Viton
PSI / bar	Up to 100 PSI / 6.9 bar
Hydraulic System Pressure	Up to 2500 PSI (172 bar)
Hydraulic Fluid Flow	Up to 10 GPM (2.27 m ³ /h)
Hydraulic Motor	Gerotor
Options	Hydraulic motors with flow control

Application:

- Agricultural
- Commercial
- Industrial
- Marine
- OEM



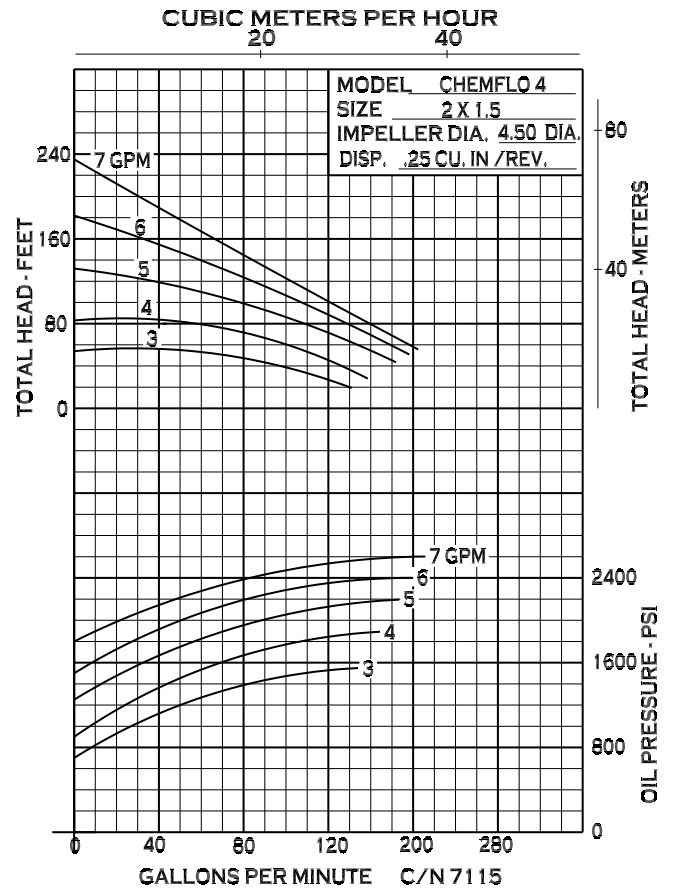
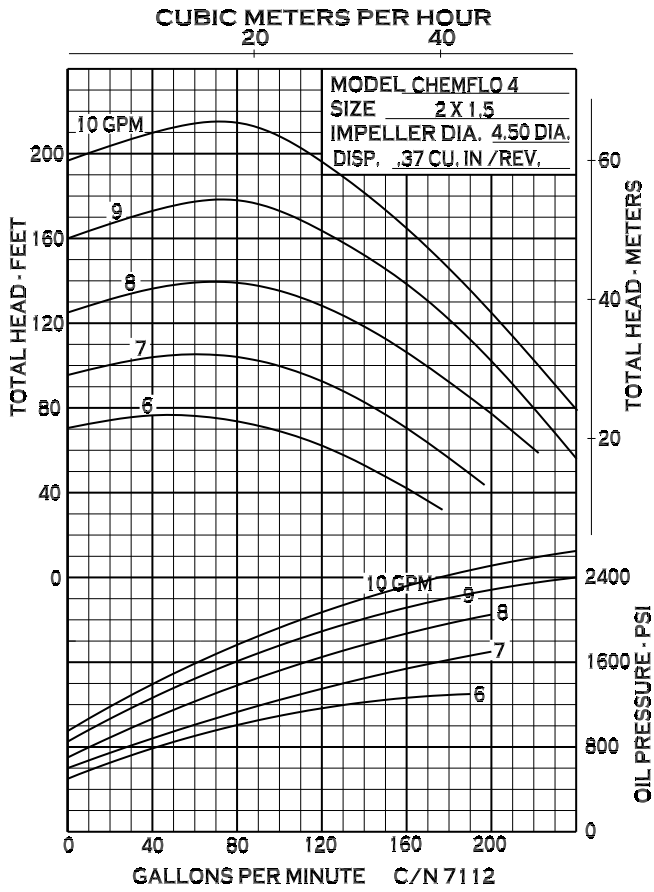
12500 South Pulaski Road
Alsip, IL 60803, USA
Phone (800) 563-8006



An Ingersoll Rand Business

CHEMFLO 4 Hydraulic

PERFORMANCE CURVES



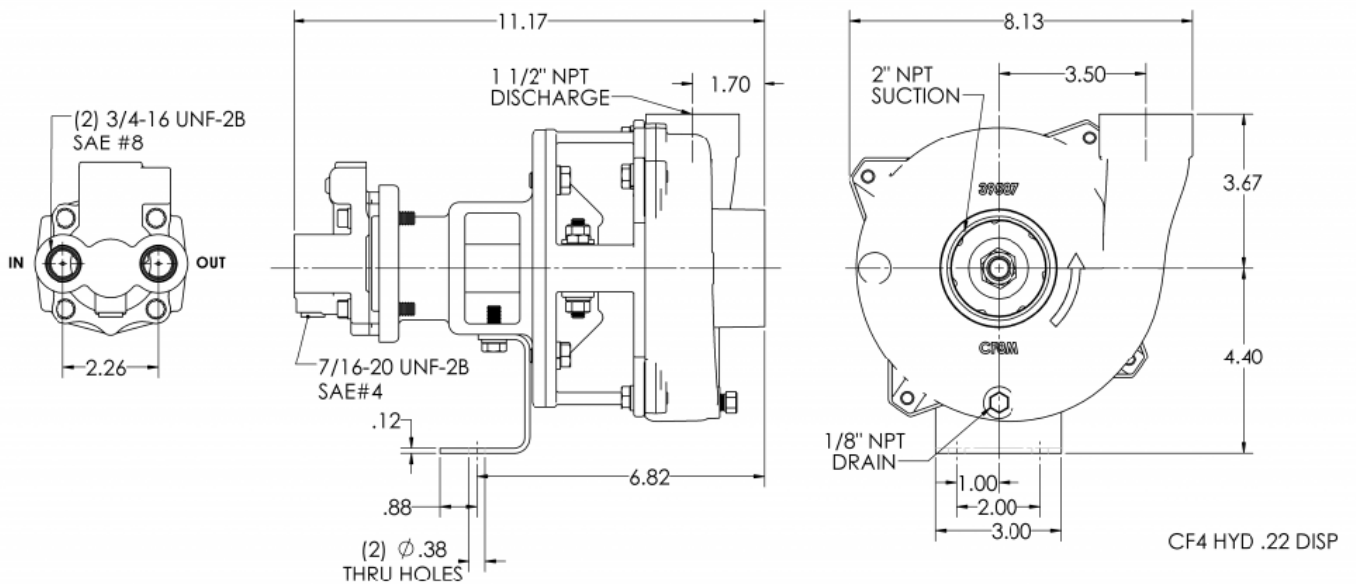
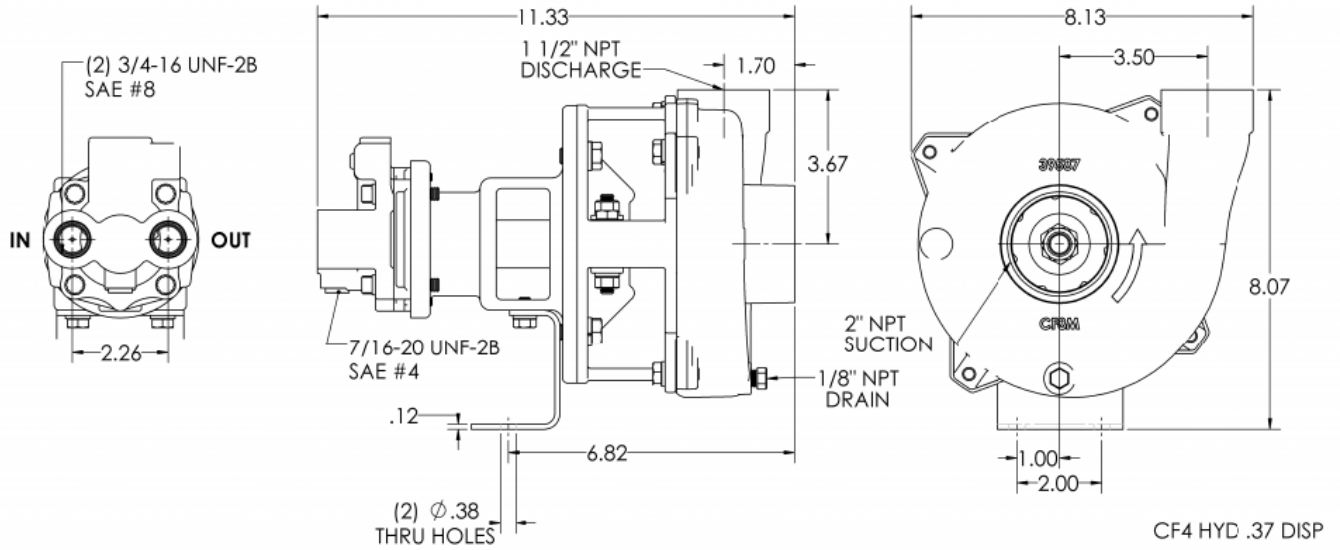
12500 South Pulaski Road
Alsip, IL 60803, USA
Phone (800) 563-8006



An Ingersoll Rand Business

CHEMFLO 4 Hydraulic

DIMENSIONS



* For complete parts lists and troubleshooting guidance, please refer to the MP Pumps Installation Operation & Maintenance (IOM) Manual.



12500 South Pulaski Road
Alsip, IL 60803, USA
Phone (800) 563-8006