



FLOMAX 15 Hydraulic

3" x 3" Self Priming Centrifugal Pump

The FLOMAX® 15 Hydraulic Self-Priming Centrifugal Pump is built for high performance and durability, making it ideal for demanding industrial, agricultural, and marine operations. Designed to generate a strong vacuum, it can lift liquids from depths of up to 25 feet (7.6 m), ensuring reliable functionality even under challenging conditions. Its integrated flapper valve helps maintain a full liquid column in the suction line, minimizing the need for repeated priming and supporting consistent operation.

Powered by a .73 cubic inch (12.0 cm³) displacement gear motor, the FLOMAX® 15 delivers hydraulic flow rates between 8 GPM (1.8 m³/h) and 15 GPM (3.4 m³/h), with pressure capabilities ranging from 500 PSI (34 bar) to 1700 PSI (117 bar). This flexibility makes it suitable for numerous applications, including bilge and ballast pumping, auxiliary fire systems, washdown tasks, fertilizer and pesticide handling, blending, nurse tank operations, and bulk fluid transfer.

Constructed from robust materials such as 316 stainless steel, bronze, and cast iron, the pump is engineered for longevity. Standard components include a stainless steel drive sleeve, corrosion-resistant fasteners, a renewable wear plate, and a semi-open dynamically balanced impeller. For operations involving abrasive or corrosive fluids, optional upgrades like double grease-lubricated seals and stainless steel impellers are available, ensuring maximum resilience in harsh environments.

The FLOMAX 15 Hydraulic model is certified with ABS Type Approval.

SPECIFICATIONS:

Suction / Discharge	3" x 3" NPT
Materials of Constructions	316 stainless steel, Bronze, Cast iron
Flow	Up to 318 GPM (72.2 m ³ /h)
Head Feet	Up to 183' (56 m)
Seal	Special seal material combinations available (consult factory), Standard carbon / ceramic / Viton
Drive Options	Hydraulic motor .73 cu. in. (12.0 cm ³)
Max Solid Size	.625" (15.9 mm) diameter
Hydraulic Fluid Flow	Up to 15 GPM (3.4 m ³ /h)
Hydraulic System Pressure	Up to 1700 PSI (117 bar)
Hydraulic Motor	Gear
PSI / bar	Up to 82 PSI / 5.7 bar
Option	Hydraulic motors with flow control

Features

- Renewable wear plate
- Stainless steel drive sleeve
- Stainless steel fasteners
- Up to a 25' (7.6 m) suction lift
- ABS Type Approved

Application

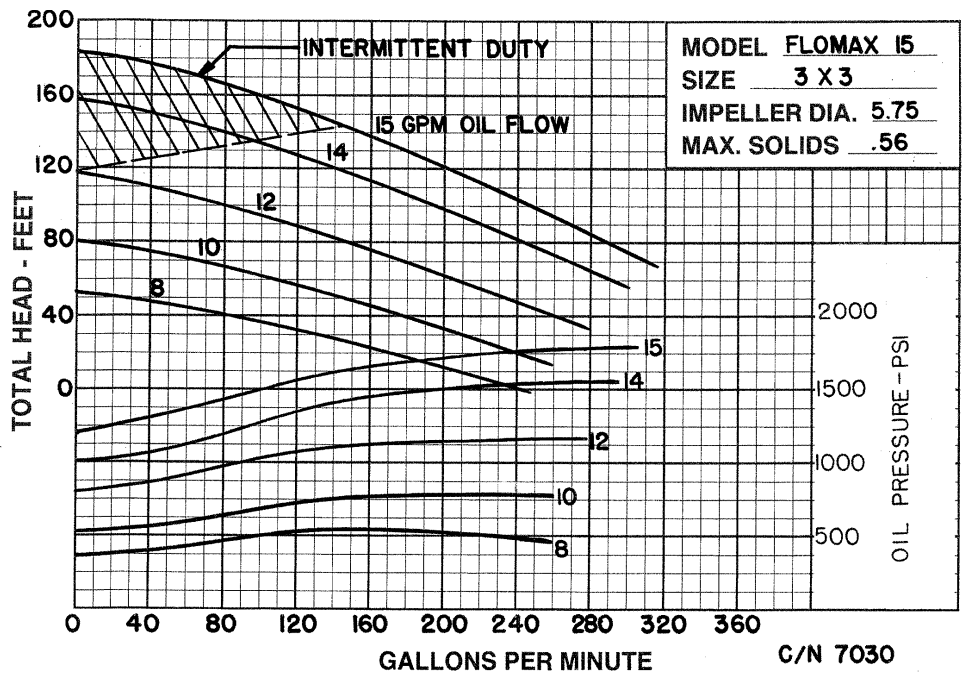
- Agricultural
- Industrial
- Marine



An Ingersoll Rand Business

FLOMAX 15 Hydraulic

PERFORMANCE CURVES



12500 South Pulaski Road
Alsip, IL 60803, USA
Phone (800) 563-8006

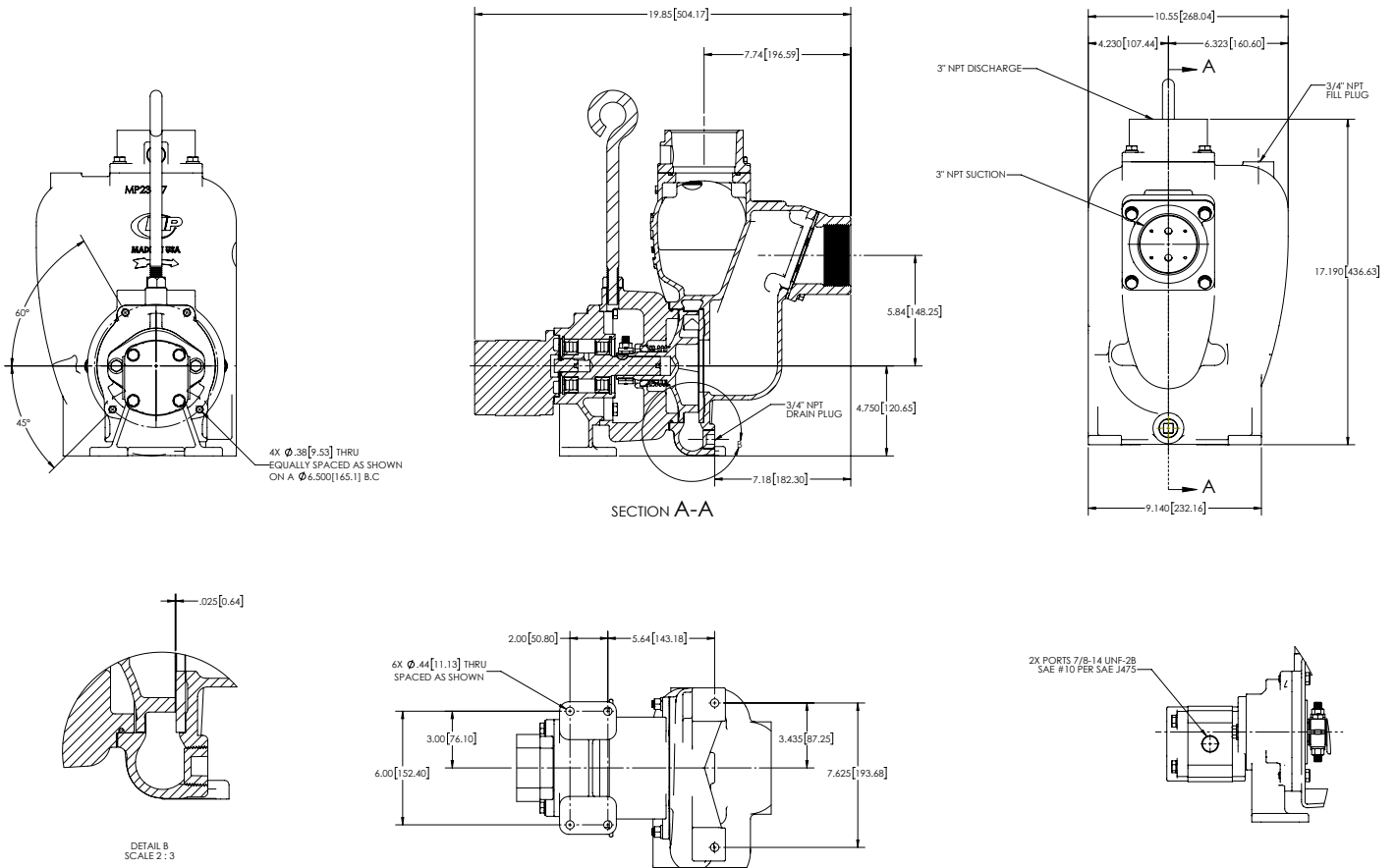


An Ingersoll Rand Business

FLOMAX 15 Hydraulic

DIMENSIONS

FM15PMP C:PED/HYD ULTRA 5.75 (MP28553)



* For complete parts lists and troubleshooting guidance, please refer to the MP Pumps Installation Operation & Maintenance (IOM) Manual.



12500 South Pulaski Road
Alsip, IL 60803, USA
Phone (800) 563-8006