

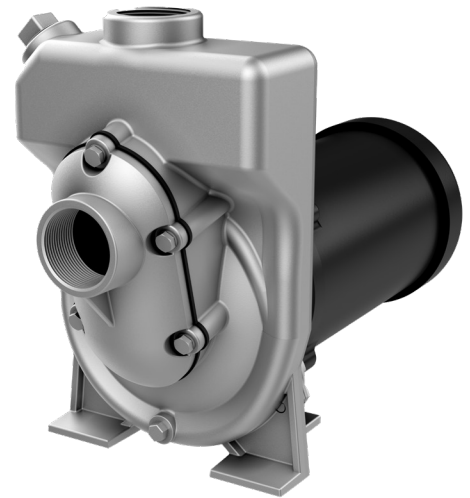


# FMX 150

## 1.5" x 1.5" Self Priming Centrifugal Pump

The patented 1.5" x 1.5" FMX150 self-priming centrifugal pump is constructed of 316 SS for superior corrosion resistance and compatibility with most fluid types. A type standard carbon / ceramic / viton mechanical seal is standard. With a maximum flow of over 100 GPM and pressure capabilities of nearly 110 feet, this rugged self-priming pump is capable of 17 feet suction lift when operating at 3450 RPM.

The FMX 150 has numerous applications in industries such as: construction, petroleum, diesel exhaust fluid, marine and marine air conditioning, agriculture for biocides and liquid fertilizers, and numerous industrial applications.

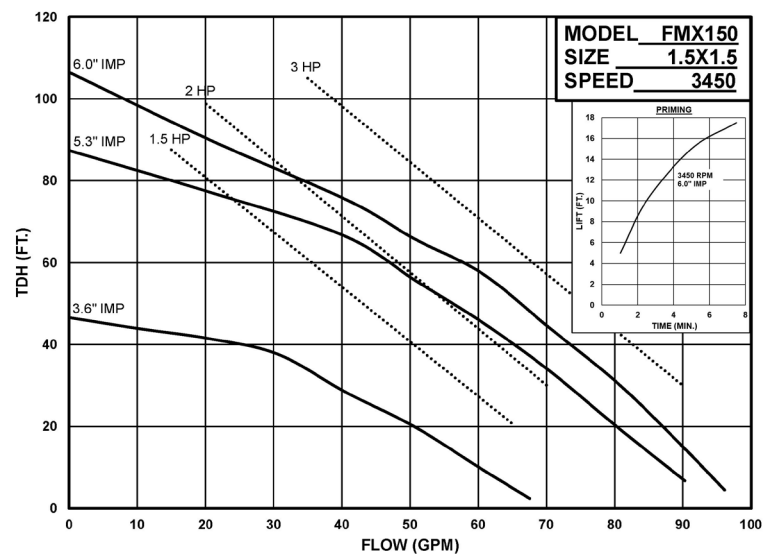


### Application:

- Construction
- Petroleum
- Marine
- Air Conditioning
- Diesel Exhaust Fluid

### SPECIFICATIONS:

Suction / Discharge	1.5" x 1.5" NPT
Materials of Construction	316 stainless steel
Flow	Up to 100 GPM
Head Feet	Up to 110'
Impeller	Impeller 6.0" max. diameter, semi-open
Motor	Up to 3 HP
Drive Options	Close coupled 56C
Seal	Standard Carbon / Ceramic / Viton



12500 South Pulaski Road  
 Alsip, IL 60803  
 Phone (800) 448.1668

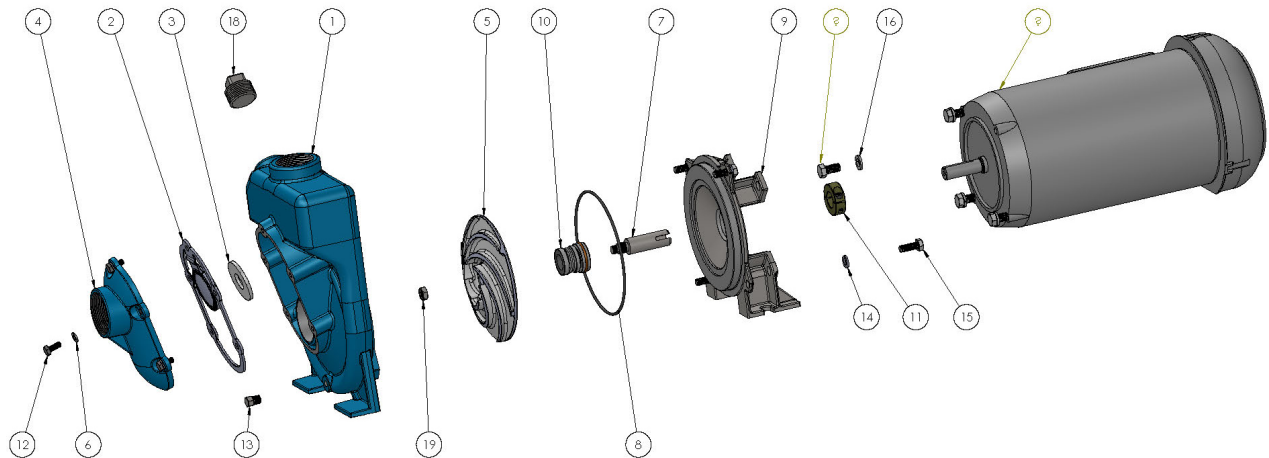






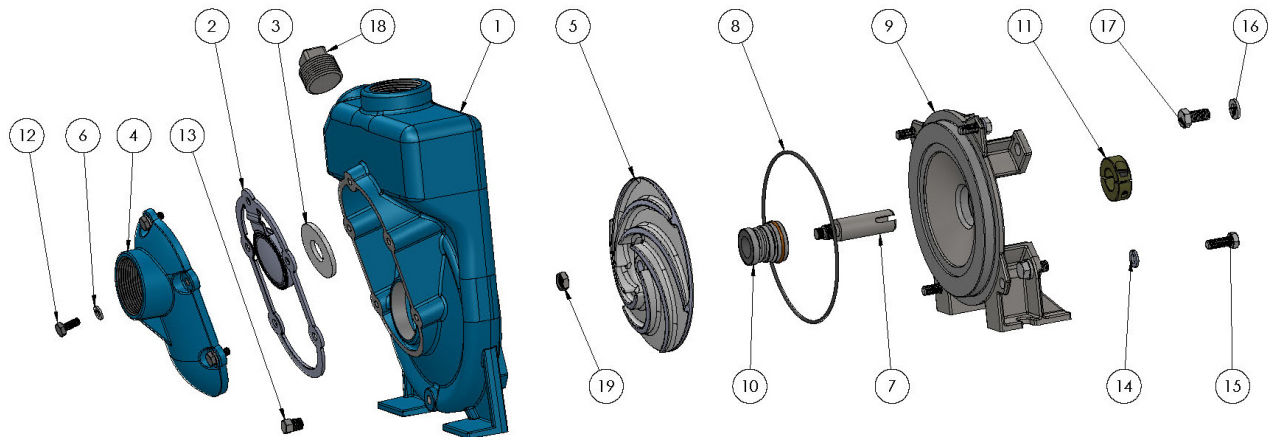
An Ingersoll Rand Business

# FMX150PMP SS:3-3 56C 6.0



ITEM NO.	PART NUMBER	DESCRIPTION	MATERIAL	QTY.	ITEM NO.	PART NUMBER	DESCRIPTION	MATERIAL	QTY.
1	MP51001	HSG SS MACH:FMX150	316 SS / CF8M SS	1	11	MP28049	CLAMP	STEEL	1
2	MP51004	FLAPPER V:FMX150	VITON	1	12	MP26197	ELECTRIC MOTOR 56C	3HP 3PH 230/460V	1
3	MP51012	WASHER SS:FLAT 2.0X.812X.15	STAINLESS STEEL	1	13	MP21504	CAP SCREW HH: 1/4-20X5/8	STEEL	5
4	MP51003	COVER MACH SS:FMX150	316 SS / CF8M SS	1	14	MP21255	PIPE PLUG 1/8" NPT	316 SS	1
5	MP29910	IMP SS MACH:CF1 A-6.0	316 SS / CF8M SS	1	15	MP21238	LOCKWASHER 5/16 X 18	STAINLESS STEEL	4
6	MP33564	LOCKWASHER 1/4"	STAINLESS STEEL	5	16	MP21242	CAP SCREW HH 5/16-18 X 7/8	STAINLESS STEEL	4
7	MP29785	DRIVE SLEEVE	316 SS	1	17	MP21266	LOCKWASHER 3/8 X 1/8	STAINLESS STEEL	4
8	MP29715	O RING AS 568-162	VITON	1	18	MP25663	CAPSCREW 3/8-16 X 3/4	STAINLESS STEEL	4
9	MP29908	ADAPTER	316 SS / CF8M SS	1	19	MP34780	PIPE PLUG 1" NPT	STAINLESS STEEL	1
10	MP30061	SEAL ASSY T-2100	CERAMIC/CARBON/VITON	1	20	MP35598	HEX JAM NUT SS: 3/8-24	STAINLESS STEEL	1

# FMX150PPK SS:6.0 T-2100



ITEM NO.	PART NO.	DESCRIPTION	MATERIAL	QTY.	ITEM NO.	PART NO.	DESCRIPTION	MATERIAL	QTY.
1	MP51001	HSG SS MACH:FMX150	316 SS / CF8MSS	1	11	MP28049	CLAMP	STEEL	1
2	MP51004	FLAPPER V:FMX150	VITON	1	12	MP21504	CAP SCREW HH: 1/4-20X5/8	STEEL	5
3	MP51012	WASHER SS:FLAT 2.0X.812X.15	STAINLESS STEEL	1	13	MP21255	PIPE PLUG 1/8" NPT	316 SS	1
4	MP51003	COVER MACH SS:FMX150	316 SS / CF8MSS	1	14	MP21238	LOCKWASHER 5/16 X 18	STAINLESS STEEL	4
5	MP29910	IMP SS MACH:CF1 A-6.0	316 SS / CF8MSS	1	15	MP21242	CAP SCREW HH 5/16-18 X 7/8	STAINLESS STEEL	4
6	MP33564	LOCKWASHER 1/4"	STAINLESS STEEL	5	16	MP21266	LOCKWASHER 3/8 X 1/8	STAINLESS STEEL	4
7	MP29785	DRIVE SLEEVE	316 SS	1	17	MP25663	CAPSCREW 3/8-16 X 3/4	STAINLESS STEEL	4
8	MP29715	O RING AS 568-162	VITON	1	18	MP34780	PIPE PLUG 1" NPT	STAINLESS STEEL	1
9	MP29908	ADAPTER	316 SS / CF8MSS	1	19	MP35598	HEX JAM NUT SS: 3/8-24	STAINLESS STEEL	1
10	MP30061	SEAL ASSY T-2100	CERAMIC/CARBON/VITON	1					