



HHLF "High Output"

2"x2" Self Priming Centrifugal Pump

High Head Low Flow

MP Pumps has extended the performance range of the current HHLF series by designing a larger (7.5" diameter) impeller and matching volute. The new impeller and volute will fit into the existing HHLF housing. An o-ring has also been added to the discharge port for increased sealing at the higher pressures. Total dynamic head (TDH) has increased from 190' to 250' (76 m).

The HHLF series is available close coupled to NEMA "C" Face electric motors or as PumPAKs®. The engine drive models are capable of coupling to both gasoline and diesel engines with 1" keyed drive shafts. Pedestal mounted pumps are also available.

The volute and impeller are removable and easily replaced.

The HHLF "HO" pumps are ABS type approved and meet USCG specifications for auxillary fire control (46 CFR compliant).

ABS Type Approval for the HHLF, HHLF 1.5 & HHLF HO

SPECIFICATIONS:

Suction / Discharge	2" x 2" NPT
Flow	Up to 150 GPM (34 m ³ /h)
Head Feet	Up to 250' (76 m)
Impeller	7.5" (190.5 mm) Silicon Bronze CA 875
Drive Options	Close coupled 184TC Close coupled 215TC Engine Drive Hydraulic Drive
Seal	Carbon/Ceramic/Viton-Type 21, Other Seals Available
Housing	Cast Iron Class 30 or Silicon Bronze CA 875
Mounting Options	Close Coupled to NEMA "C" Face Motor Frame Pedestal PumPak®
Adaptor	Cast Iron Class 30 or Silicon Bronze CA 875
Drive Sleeve	304 Stainless Steel
46 CFR Compliant	Yes
ABS Type Approved	Yes

Features

- 46 CFR Compliant
- ABS Type Approved

Application

- Agricultural
- Commercial
- Industrial
- Marine
- OEM



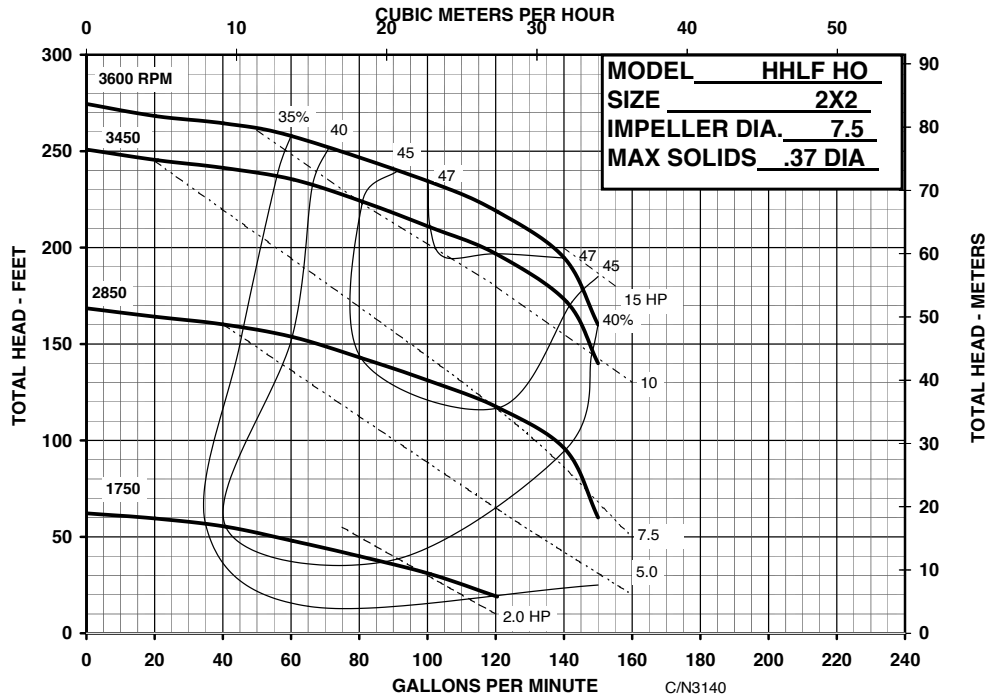
12500 South Pulaski Road
Alsip, IL 60803, USA
Phone (800) 563-8006



An Ingersoll Rand Business

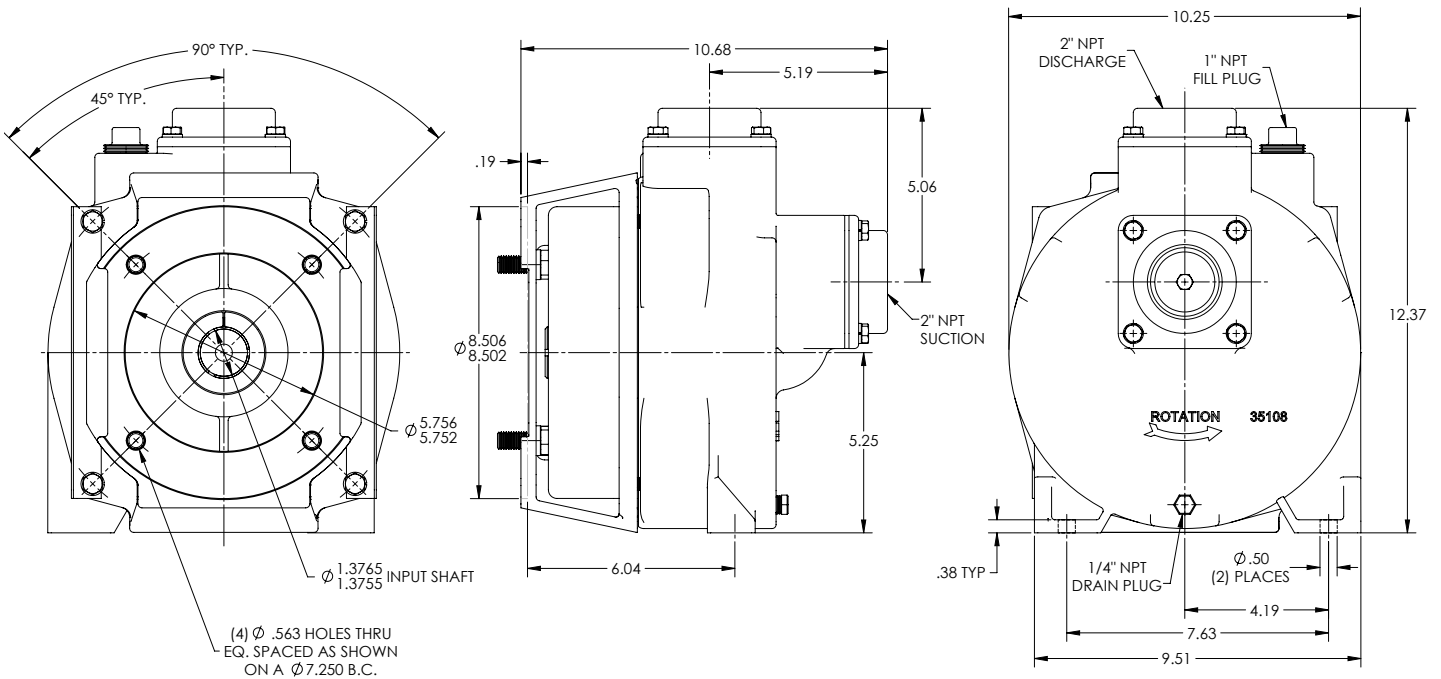
HHLF "High Output"

PERFORMANCE CURVES



DIMENSIONS

HHLF2HOPPK C:CCMTR 1.38 7.5BI BV (MP39093)



* For complete parts lists and troubleshooting guidance, please refer to the MP Pumps Installation Operation & Maintenance (IOM) Manual.



12500 South Pulaski Road
Alsip, IL 60803, USA
Phone (800) 563-8006