

CHEMFLO 3 CC

2" x 1-1/2" End Suction Centrifugal Pump

Made with high quality investment cast 316 stainless steel components, the ChemFlo® series of pumps are designed to be applied in a wide range of pumping applications where stainless steel is required.

The ChemFlo® 3 pumps utilize a semi-open impeller design to allow for passage of larger solid sizes than similar sized enclosed impellers. Several seal options are available in addition to the standard type 2100 carbon /ceramic / Viton mechanical seal.

ChemFlo® 3 pumps are offered in two configurations, pump (with motor) and PumPAK® (without motor) versions. Electric and hydraulic motors can be close coupled to ChemFlo® 3 pumps or pedestal mounted versions are also available for long coupling.

If ordering a pumpak with a 145TC please note that the electric motor must have a base.

SPECIFICATIONS:

Suction and Discharge	2" x 1-1/2" NPT
Materials of Construction	316 stainless steel
Flow	Up to 125 GPM (28.4 m ³ /h)
Head Feet	Up to 125' (38 m)
Impeller	5.25" (133.35 mm) semi-open, cast 316 stainless steel
Motor	Up to 3 HP (2.2 kW)
Drive Options	Close coupled 56C Close coupled 145TC Close coupled 184C Pedestal PumPAK® (without motor)
Seal	Special seal material combinations available (consult factory), Standard carbon / ceramic / Viton
Options	Hydraulic motor .22 cu. in. (3.60 cm ³) Hydraulic motor .37 cu. in (6.06 cm ³) Tap for recirculation or seal flush
Drive Sleeve	316 Stainless Steel

Application:

- Agricultural
- Commercial
- Industrial
- Marine
- OEM



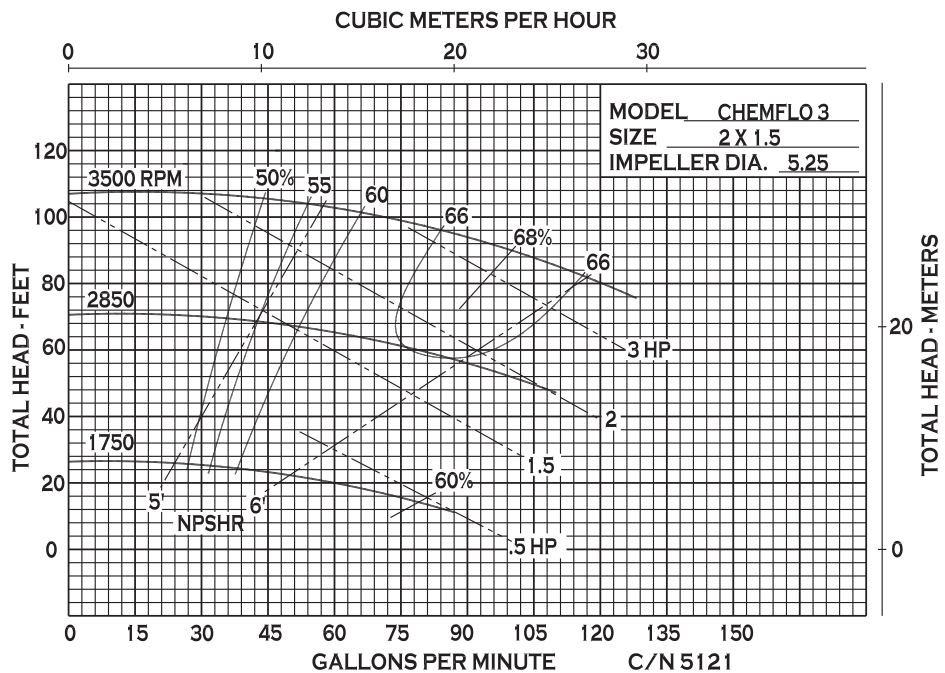
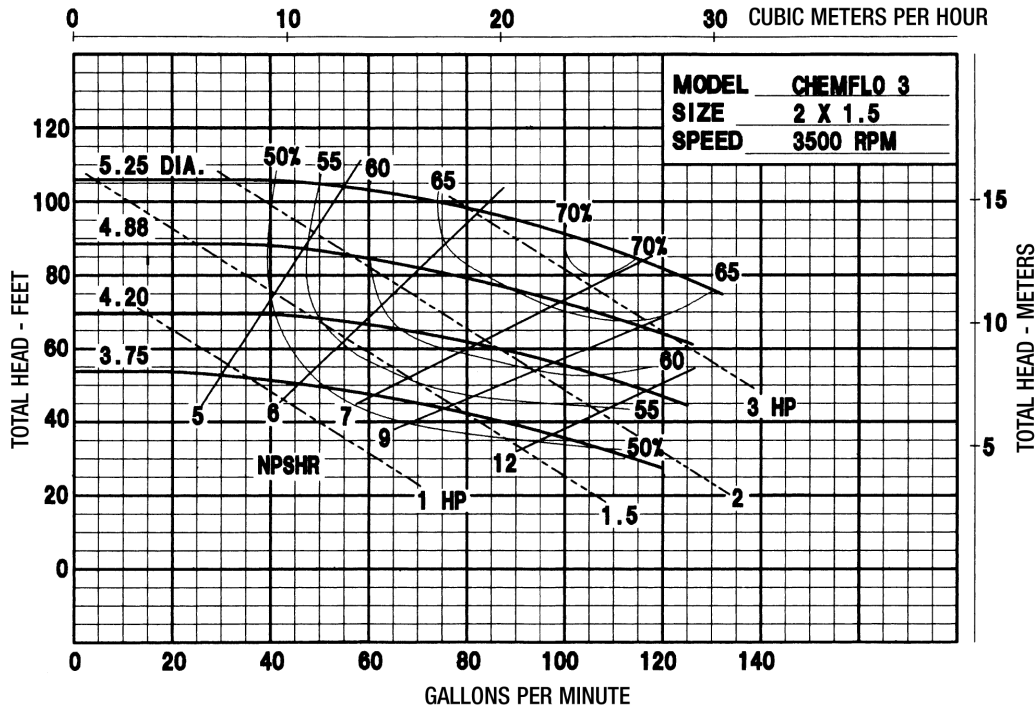
12500 South Pulaski Road
Alsip, IL 60803, USA
Phone (800) 563-8006



An Ingersoll Rand Business

CHEMFLO 3 CC

PERFORMANCE CURVES



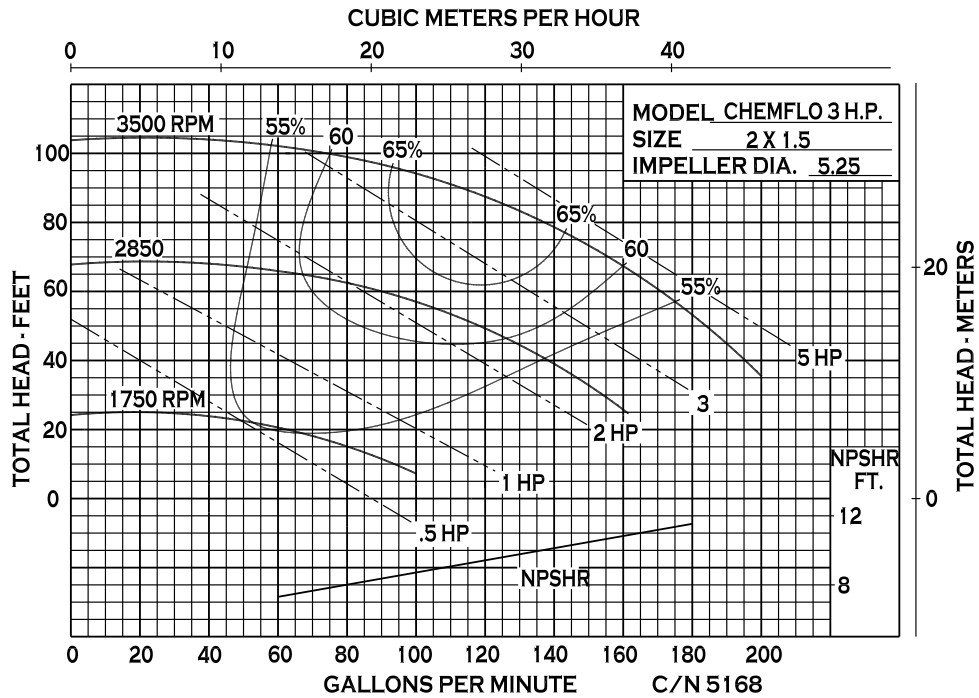
12500 South Pulaski Road
Alsip, IL 60803, USA
Phone (800) 563-8006



An Ingersoll Rand Business

CHEMFLO 3 CC

PERFORMANCE CURVES



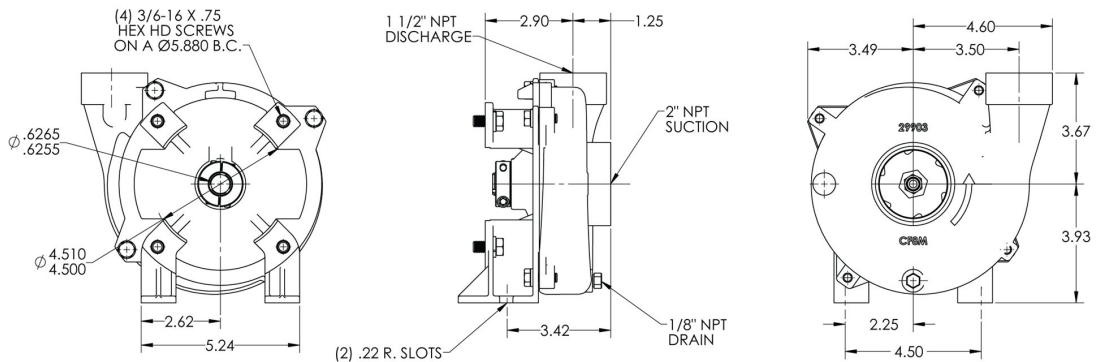
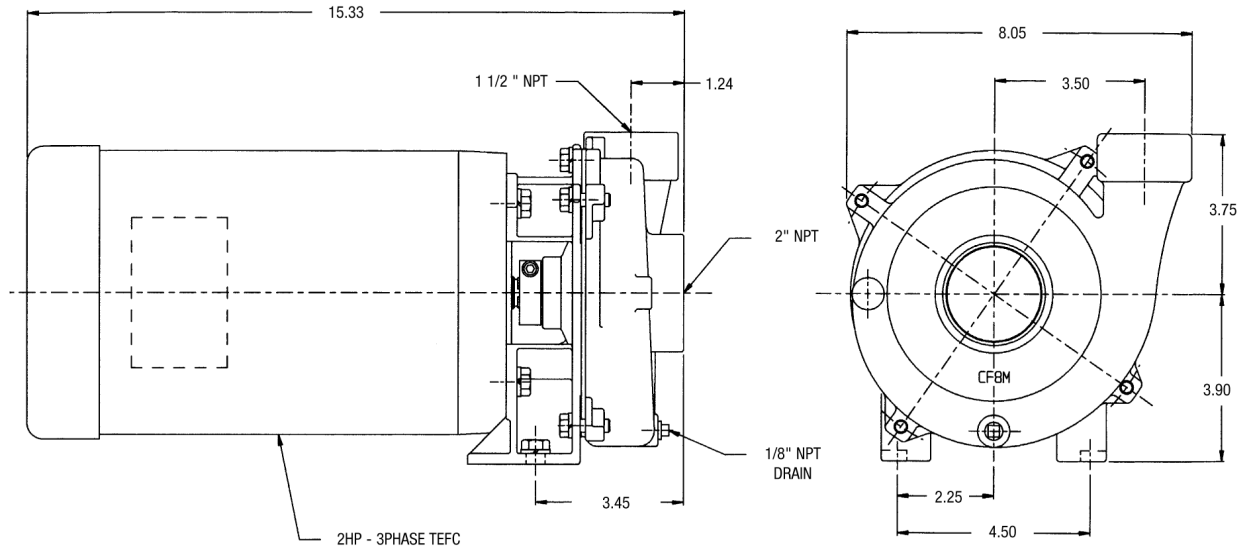
12500 South Pulaski Road
 Alsip, IL 60803, USA
 Phone (800) 563-8006



An Ingersoll Rand Business

CHEMFLO 3 CC

DIMENSIONS



CF3 PUMPAK

* For complete parts lists and troubleshooting guidance, please refer to the MP Pumps Installation Operation & Maintenance (IOM) Manual.



12500 South Pulaski Road
Alsip, IL 60803, USA
Phone (800) 563-8006