



FLOMAX 30 SS

3" x 3" 316 Stainless Steel, Self Priming, Centrifugal Pump

The FLOMAX 30 SS is a robust, self-priming centrifugal pump engineered for demanding industrial applications. Constructed from 316 stainless steel, it delivers superior resistance to corrosion and ensures compatibility with a wide range of chemicals, making it an excellent choice for handling aggressive fluids. Its versatility makes it suitable for sectors such as agriculture, marine, and general industry, where reliable and efficient fluid transfer is essential.

Key design elements include a Viton flapper, a priming chamber fill plug, and a 3-inch NPT suction flange, all contributing to simplified operation and maintenance. The discharge port features a 3-inch ANSI 150# flat flange, offering secure and durable connection options. The standard mechanical seal combines carbon, ceramic, Viton, and stainless steel components, with alternative seal configurations available to meet specialized requirements.

Installation is straightforward thanks to the fully assembled PUMPAK, which allows quick mounting to standard NEMA "C" electric motor frames, engines, or the MP pedestal. Typical applications include agricultural fertilizer transfer, chemical handling, diesel exhaust fluid (DEF) distribution, and reverse osmosis (RO) water transfer, making the FLOMAX 30 SS a versatile solution for fluid management.

The FLOMAX 30 SS model is certified with ABS Type Approval.

SPECIFICATIONS:

Suction / Discharge	Suction: 3" NPT Discharge: 3" NPT 150 # Class Flat Flange
Flow	Up to 500 GPM (113.6 m ³ /h)
Impeller	316 SS, Semi-Open, Balanced
Seal	Carbon/Ceramic/Viton
Drive Options	Close coupled 184TC Close coupled 215C Engine mount Pedestal PumPAK® (without motor)

Features

- ABS Type Approved

Application

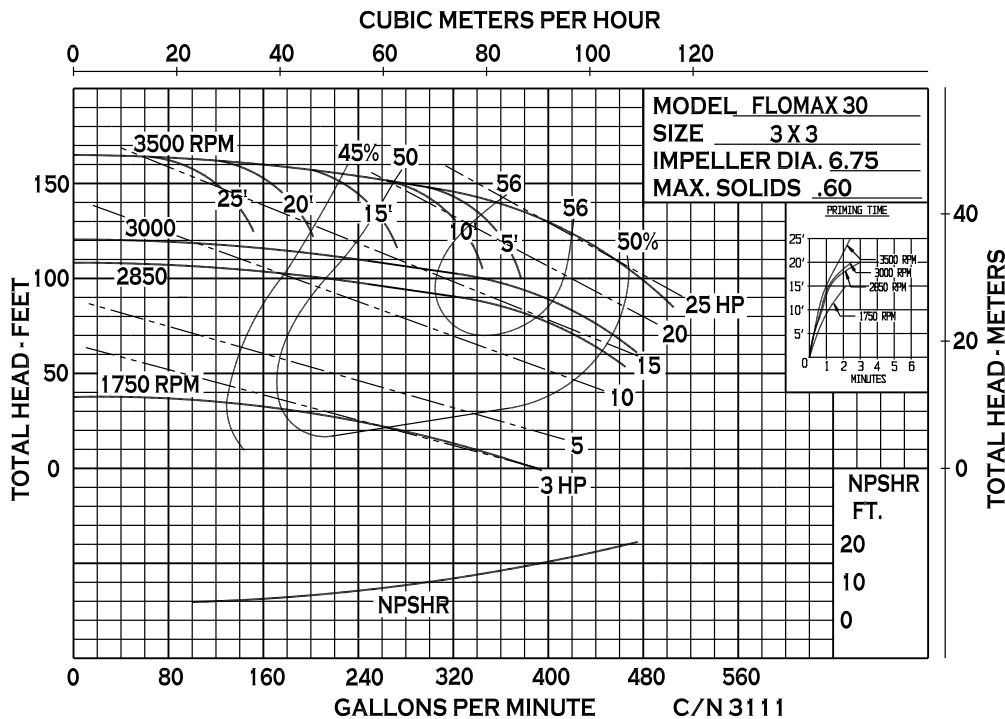
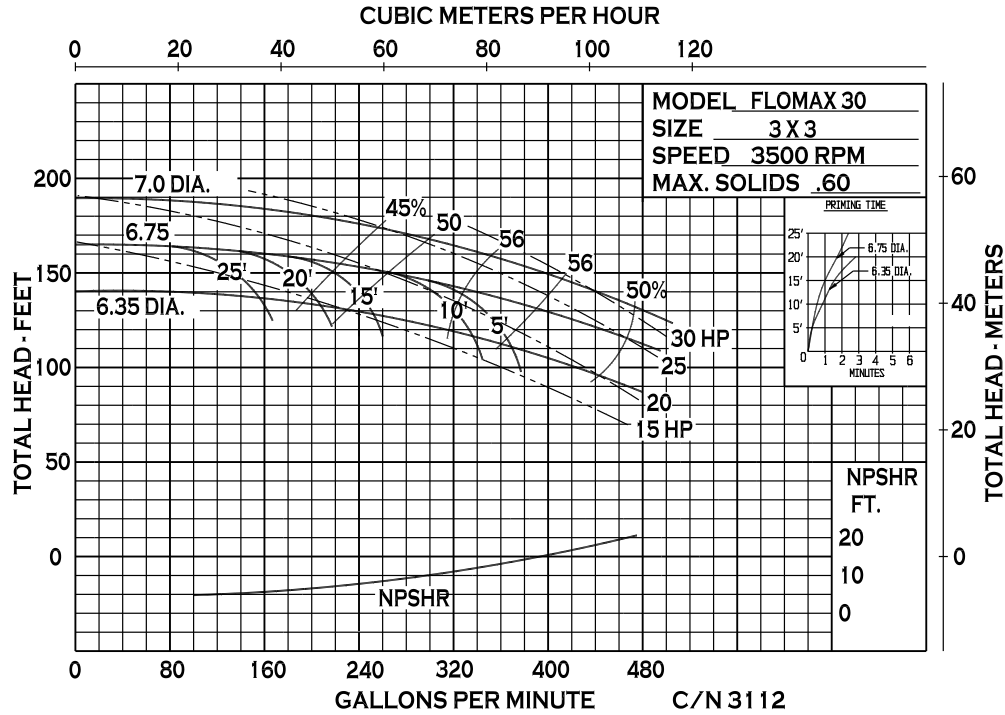
- Agricultural
- Industrial
- Marine



An Ingersoll Rand Business

FLOMAX 30 SS

PERFORMANCE CURVES



12500 South Pulaski Road
 Alsip, IL 60803, USA
 Phone (800) 563-8006

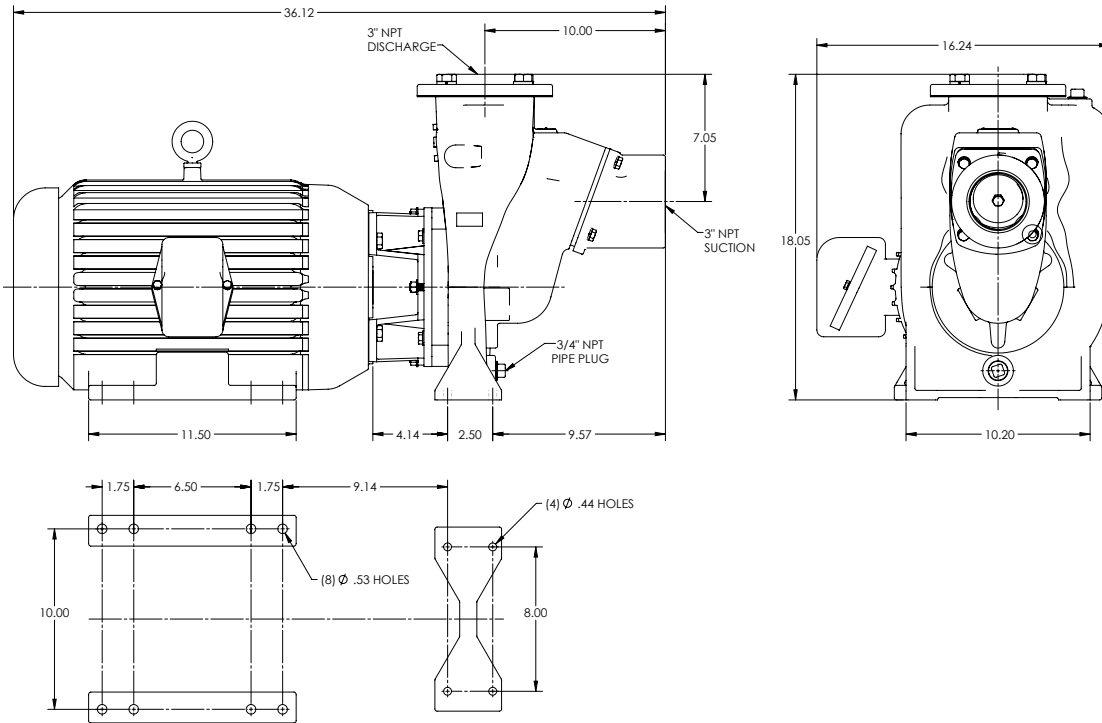


An Ingersoll Rand Business

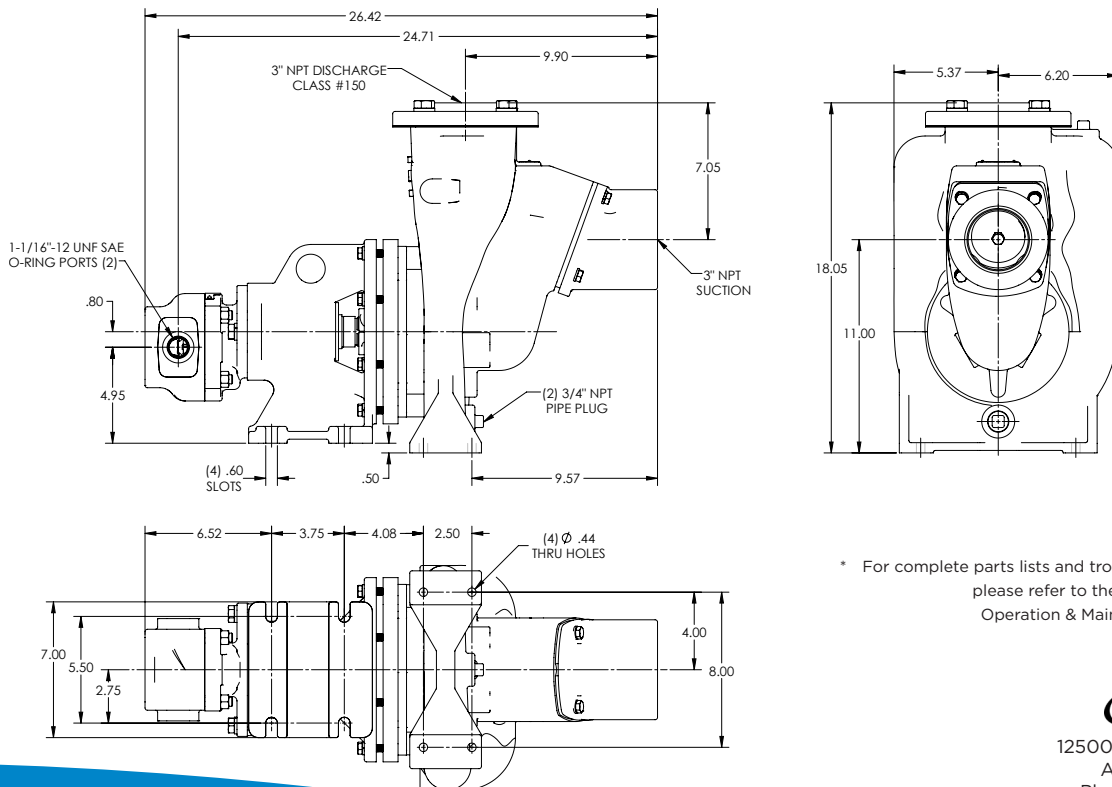
FLOMAX 30 SS

DIMENSIONS

FM30PMP SS:20-3 256TC 6.35 T-21 (MP39321)



FM30PMP SS:HYD PED 1.59 6.75IMP (MP39087)



* For complete parts lists and troubleshooting guidance, please refer to the MP Pumps Installation Operation & Maintenance (IOM) Manual.



12500 South Pulaski Road
Alsip, IL 60803, USA
Phone (800) 563-8006

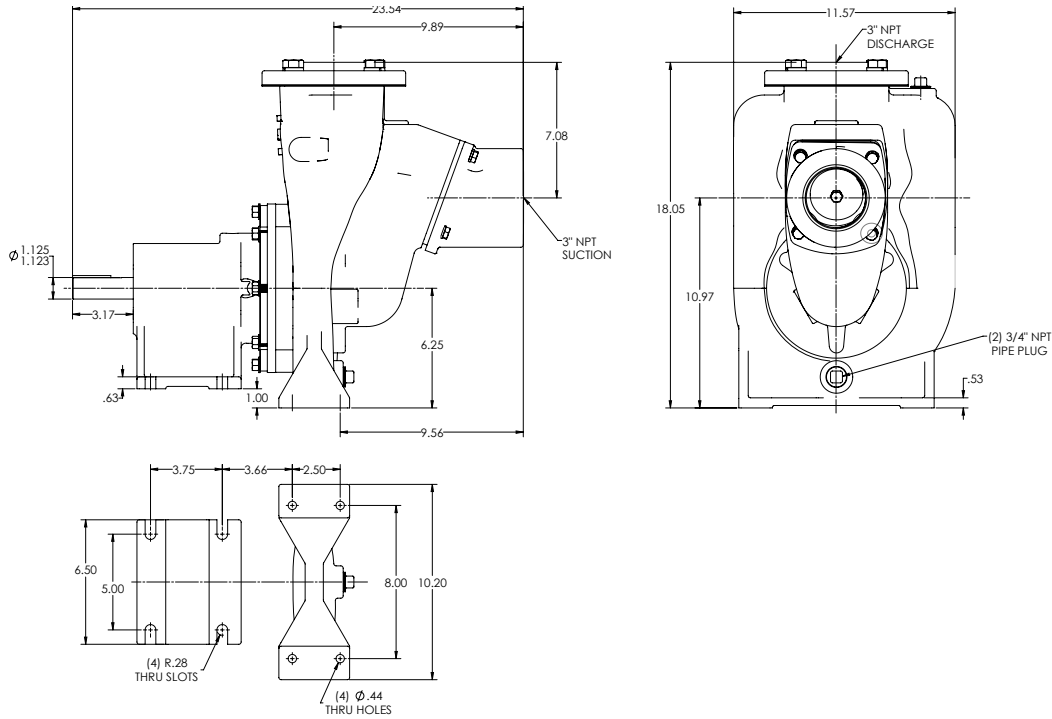


An Ingersoll Rand Business

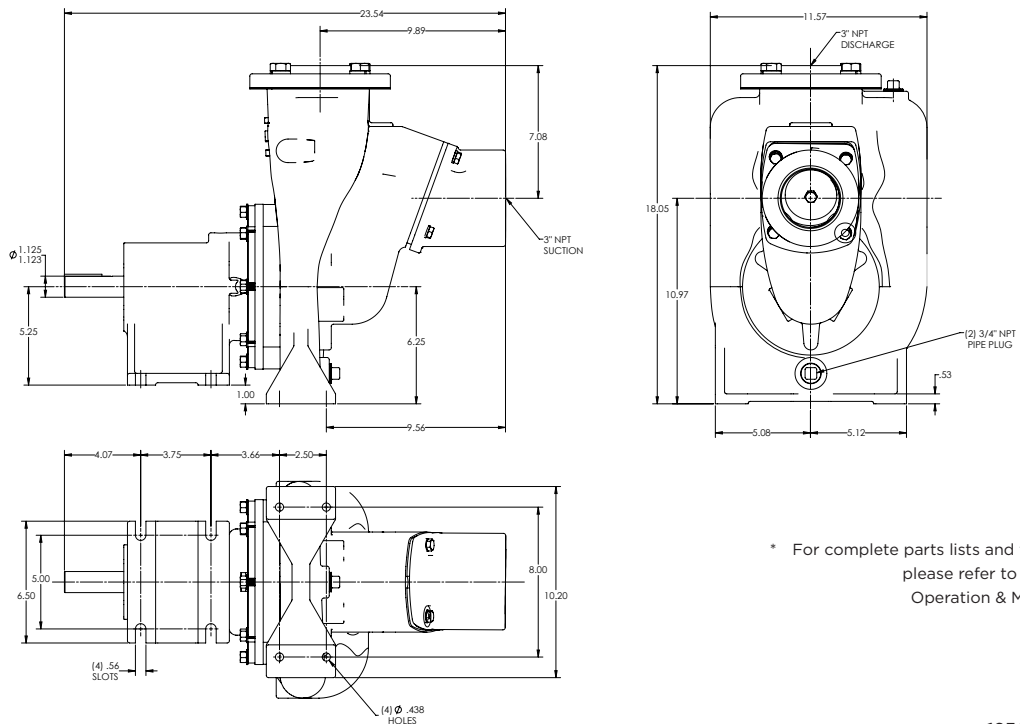
FLOMAX 30 SS

DIMENSIONS

FM30PMP SS:PED 6.75 T-2100 (MP50306)



FM30PMP SS:PED 7.0 T-2100 (MP38294)



* For complete parts lists and troubleshooting guidance, please refer to the MP Pumps Installation Operation & Maintenance (IOM) Manual.



12500 South Pulaski Road
Alsip, IL 60803, USA
Phone (800) 563-8006

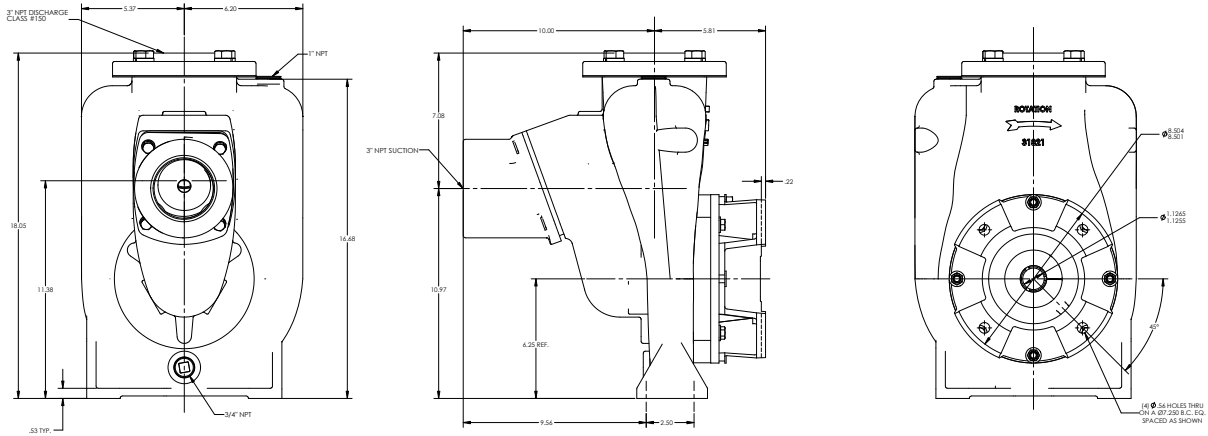


An Ingersoll Rand Business

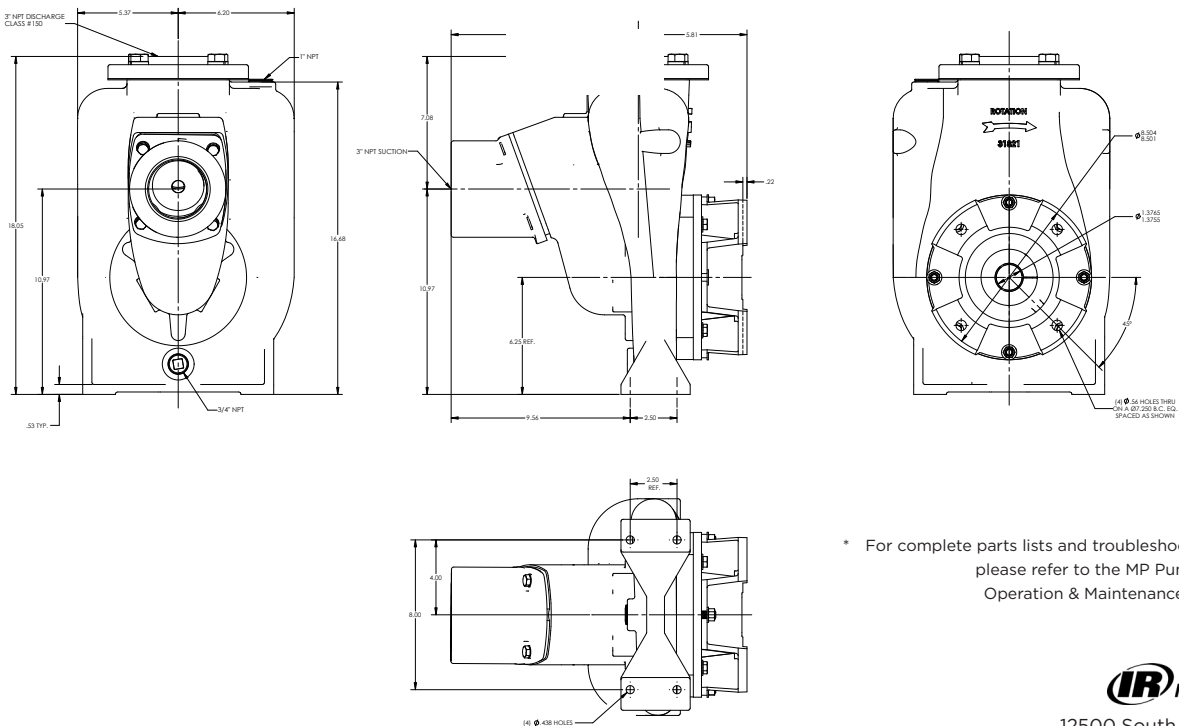
FLOMAX 30 SS

DIMENSIONS

FM30 S.S. PUMPAK (MP38296)



FM30 S.S. PUMPAK (MP38297)



* For complete parts lists and troubleshooting guidance, please refer to the MP Pumps Installation Operation & Maintenance (IOM) Manual.



12500 South Pulaski Road
Alsip, IL 60803, USA
Phone (800) 563-8006

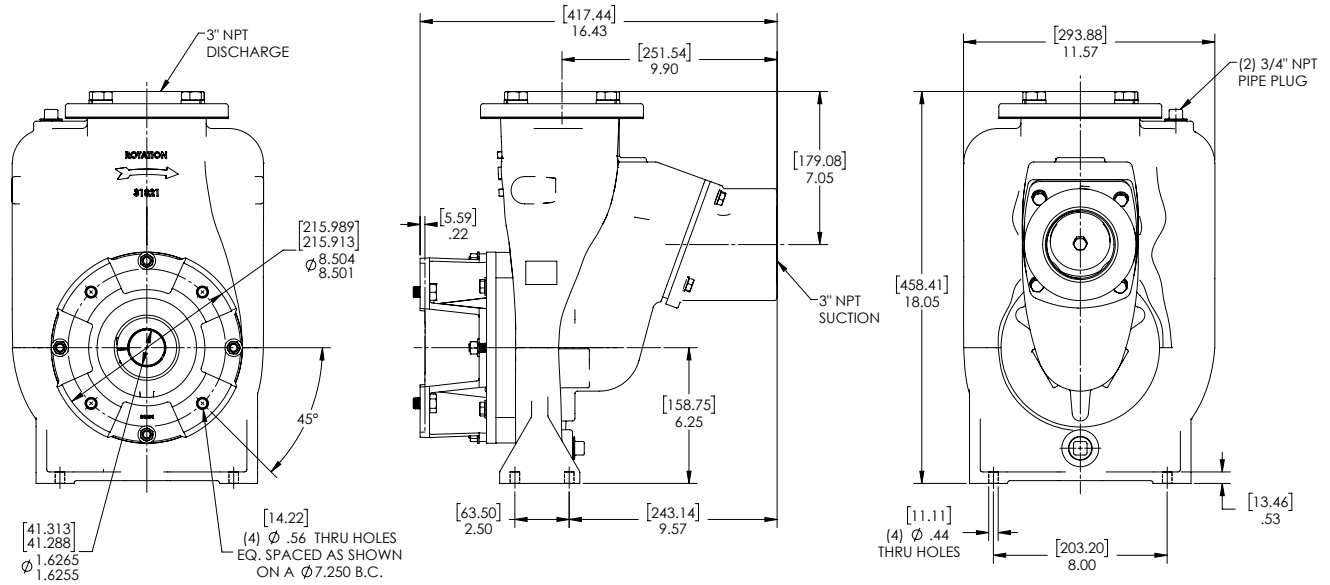


An Ingersoll Rand Business

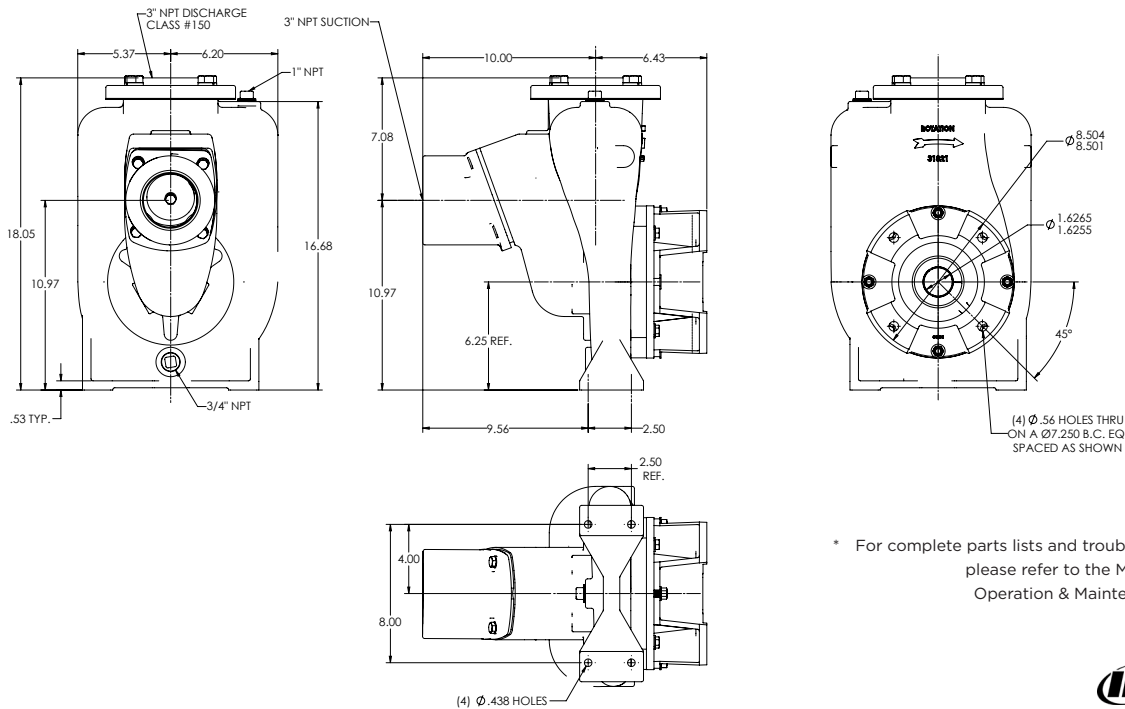
FLOMAX 30 SS

DIMENSIONS

FM30PPK SS:CCMTR 256TC 6.35 T-21 (MP50591)



FM30 S.S. PUMPAK (MP39782)



* For complete parts lists and troubleshooting guidance, please refer to the MP Pumps Installation Operation & Maintenance (IOM) Manual.



12500 South Pulaski Road
Alsip, IL 60803, USA
Phone (800) 563-8006

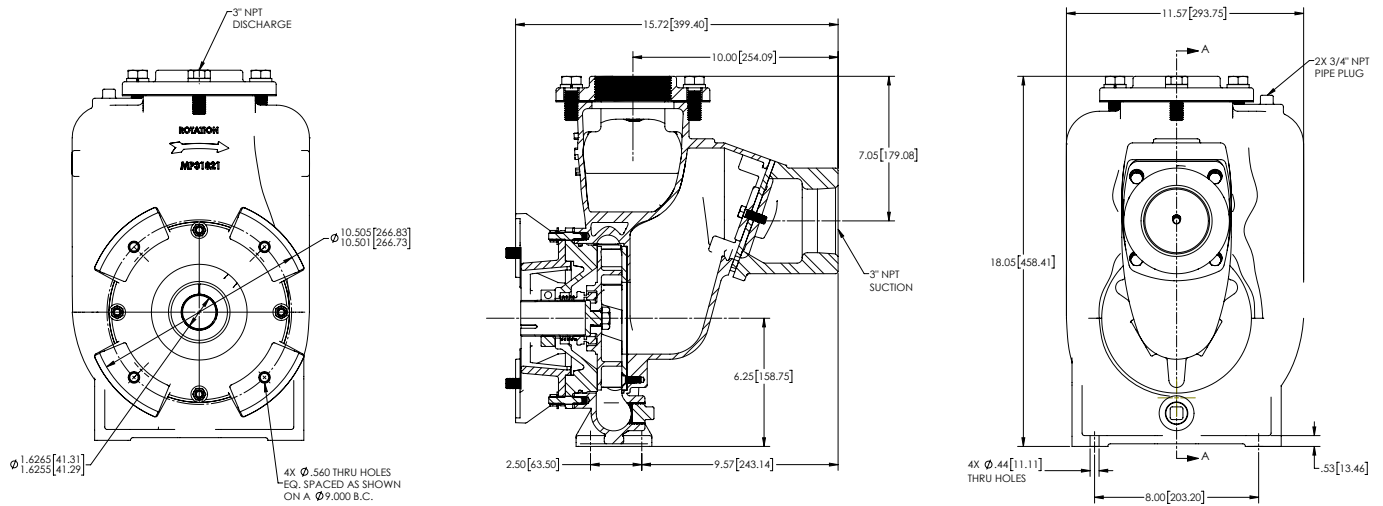


An Ingersoll Rand Business

FLOMAX 30 SS

DIMENSIONS

FM30PPK SS:CCMTR 286TC 6.75 T-21 (MP50526)



* For complete parts lists and troubleshooting guidance, please refer to the MP Pumps Installation Operation & Maintenance (IOM) Manual.



12500 South Pulaski Road
Alsip, IL 60803, USA
Phone (800) 563-8006