

CHEMFLO 2 Pedestal

1-1/2" x 1" End Suction Centrifugal Pump with Enclosed Impeller

Made with high quality investment cast 316 stainless steel components, the ChemFlo® series of pumps are designed to be applied in a wide range of pumping applications where stainless steel is required.

ChemFlo® 2 pumps utilize a semi-open impeller design to allow for passage of larger solid sizes. Several seal options are available in addition to the standard type 2100 carbon / ceramic / Viton mechanical seal.

All wetted components are 316 investment cast stainless steel providing superior corrosion resistance when pumping chemical compounds. The Chemflo® 2 pedestal uses a pump end (Pumpak) design that is interchangeable with 56C or 145TC electric motors. If ordering a pumpak with a 145TC please note that the electric motor must have a base.

SPECIFICATIONS:

Port Sizes	1-1/2" x 1" NPT
Materials of Construction	316 Stainless Steel Investment Cast
Flow	110 GPM (25 m ³ /h) @ 3500 RPM
Head Feet	Up to 108' (33 m)
Impeller	5.25" (133.35 mm) enclosed cast 316SS
Seal	Carbon/Ceramic/Viton Type 2100, Special Seals Available upon Request
O-Ring	Viton
Mounting Options	Close Coupled 56C Close Coupled 145TC High Speed Hydraulic Pedestal PumPak®

Application:

- Commercial
- Industrial
- Marine



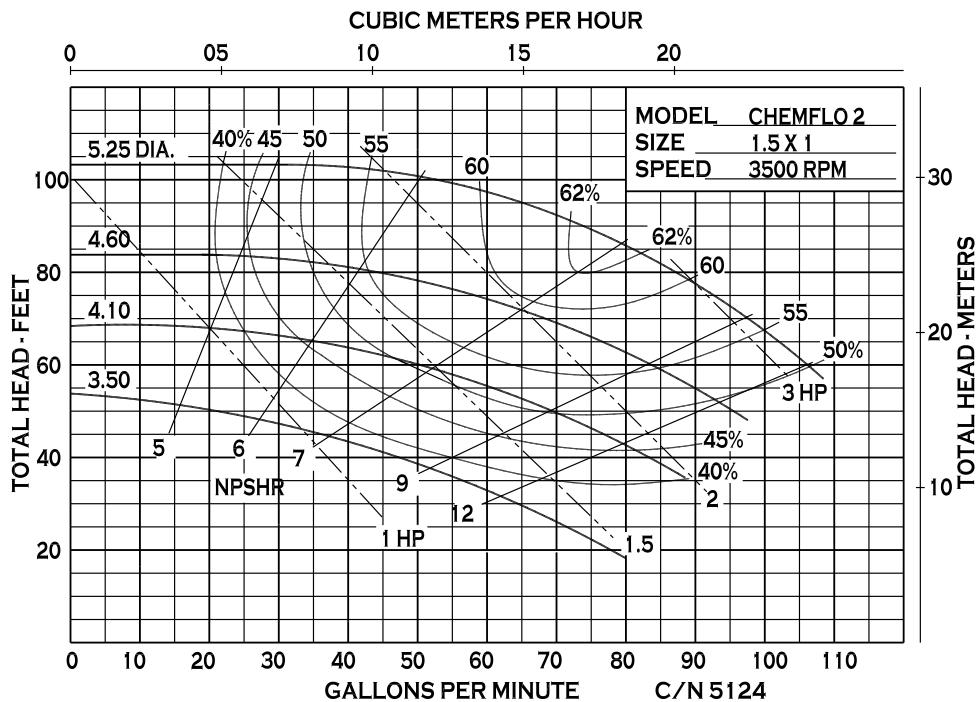
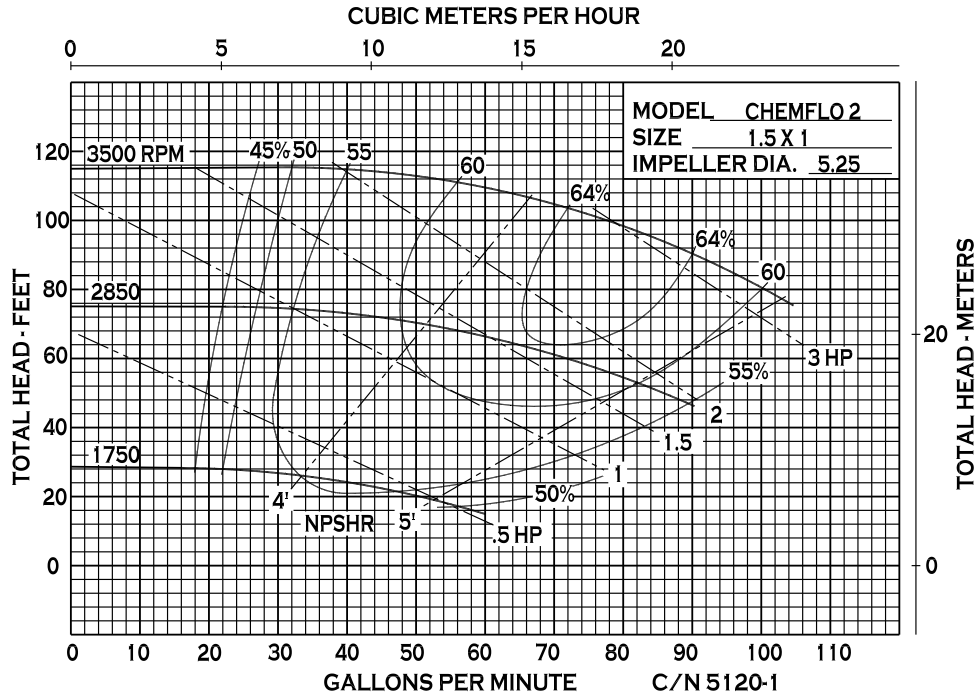
12500 South Pulaski Road
Alsip, IL 60803, USA
Phone (800) 563-8006



An Ingersoll Rand Business

CHEMFLO 2 Pedestal

PERFORMANCE CURVES



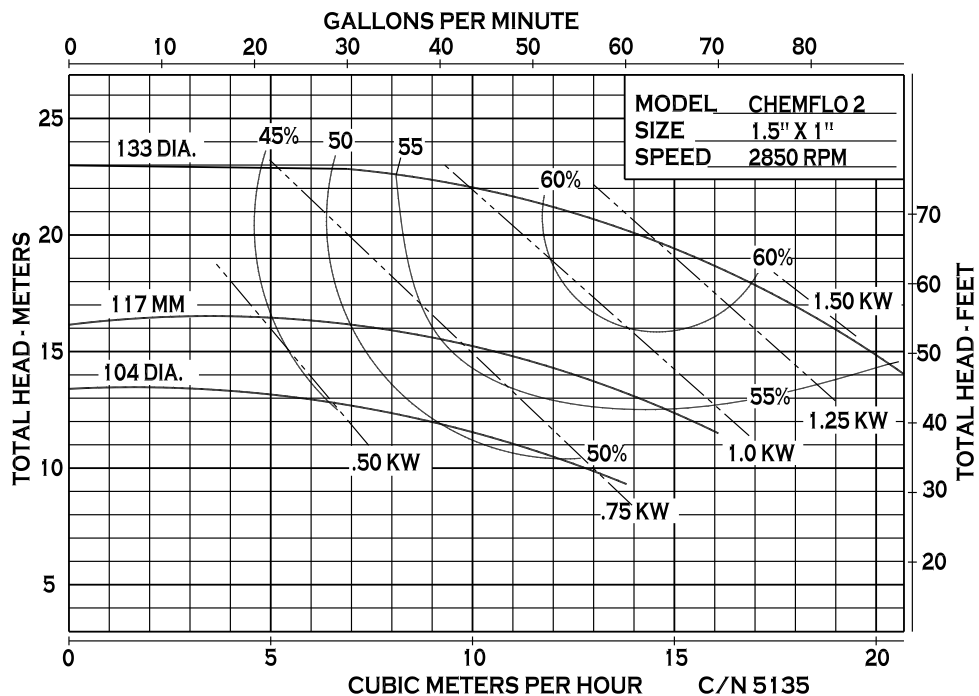
12500 South Pulaski Road
 Alsip, IL 60803, USA
 Phone (800) 563-8006



An Ingersoll Rand Business

CHEMFLO 2 Pedestal

PERFORMANCE CURVES



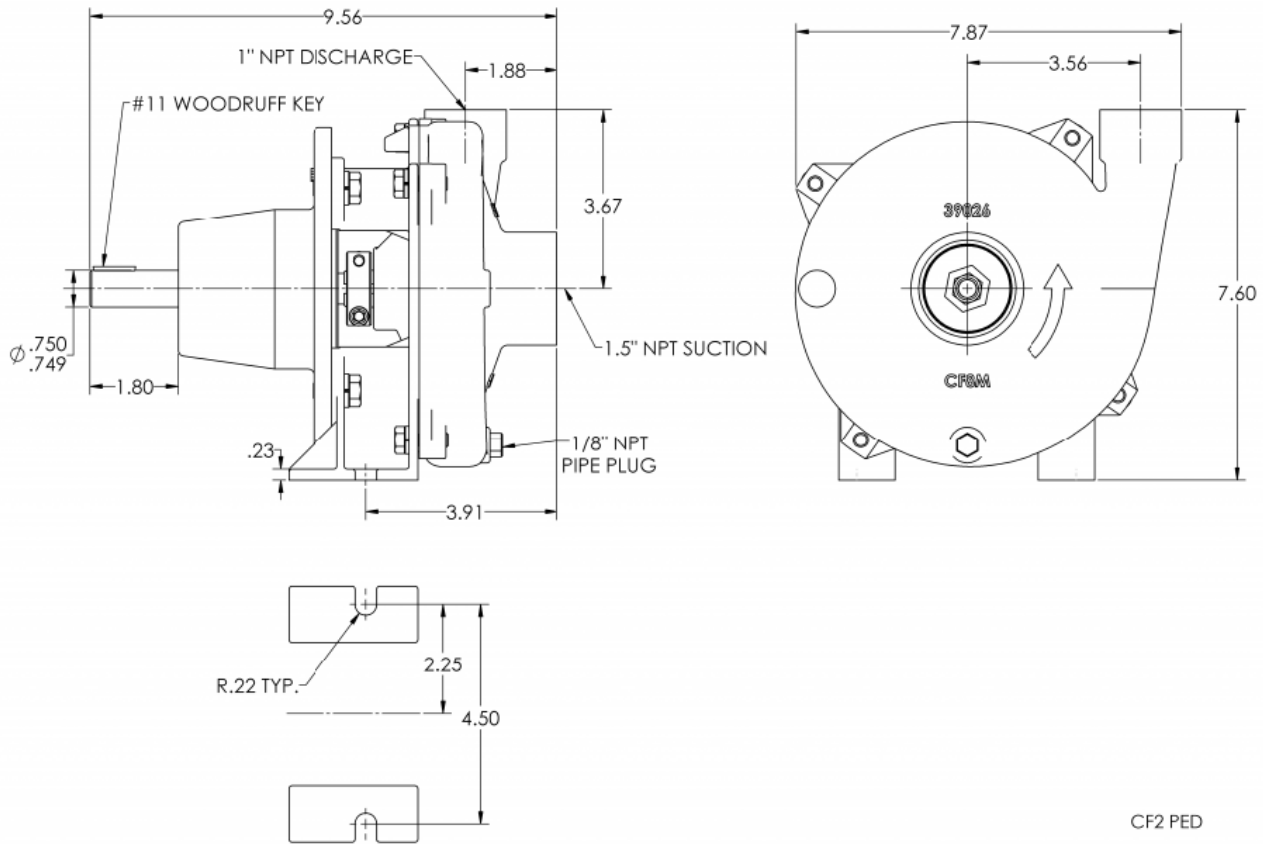
12500 South Pulaski Road
Alsip, IL 60803, USA
Phone (800) 563-8006



An Ingersoll Rand Business

CHEMFLO 2 Pedestal

DIMENSIONS



* For complete parts lists and troubleshooting guidance, please refer to the MP Pumps Installation Operation & Maintenance (IOM) Manual.



12500 South Pulaski Road
Alsip, IL 60803, USA
Phone (800) 563-8006