

# CHEMFLO 1 CC

## 1-1/2" x 1" End Suction Centrifugal Pump

Made with high quality investment cast 316 stainless steel components, the ChemFlo® series of pumps are designed to be applied in a wide range of pumping applications where stainless steel is required.

ChemFlo® 1 pumps utilize a semi-open impeller design to allow for passage of larger solid sizes and a totally enclosed impeller to meet high efficiency standards. Several seal options are available in addition to the standard type 2100 carbon / ceramic / Viton mechanical seal.

ChemFlo® 1 pumps are offered in two configurations, pump (with motor) and PumPAK® (without motor) versions. Motors available are 56C and 145TC. If ordering a PumPAK for a 145TC motor please note that the electric motor must have a base.

### SPECIFICATIONS:

<b>Suction / Discharge</b>	1-1/2" x 1" NPT
<b>Materials of Construction</b>	316 stainless steel
<b>Flow</b>	Up to 100 GPM (22.7 m <sup>3</sup> /h)
<b>Head Feet</b>	Up to 140' (43 m)
<b>Impeller</b>	6" (152.4 mm) semi-open and enclosed, optional cast 316 SS
<b>Motor</b>	Up to 3 HP (2.2 kW)
<b>Drive Options</b>	Close coupled 56C Close coupled 145TC Pedestal PumPAK® (without motor)
<b>Seal</b>	Special seal material combinations available (consult factory), Standard carbon / ceramic / Viton
<b>Options</b>	Tap for recirculation or seal flush, Hydraulic motor driven pedestals and shaft driven pedestals

### Application:

- Agricultural
- Commercial
- Industrial
- Marine
- OEM



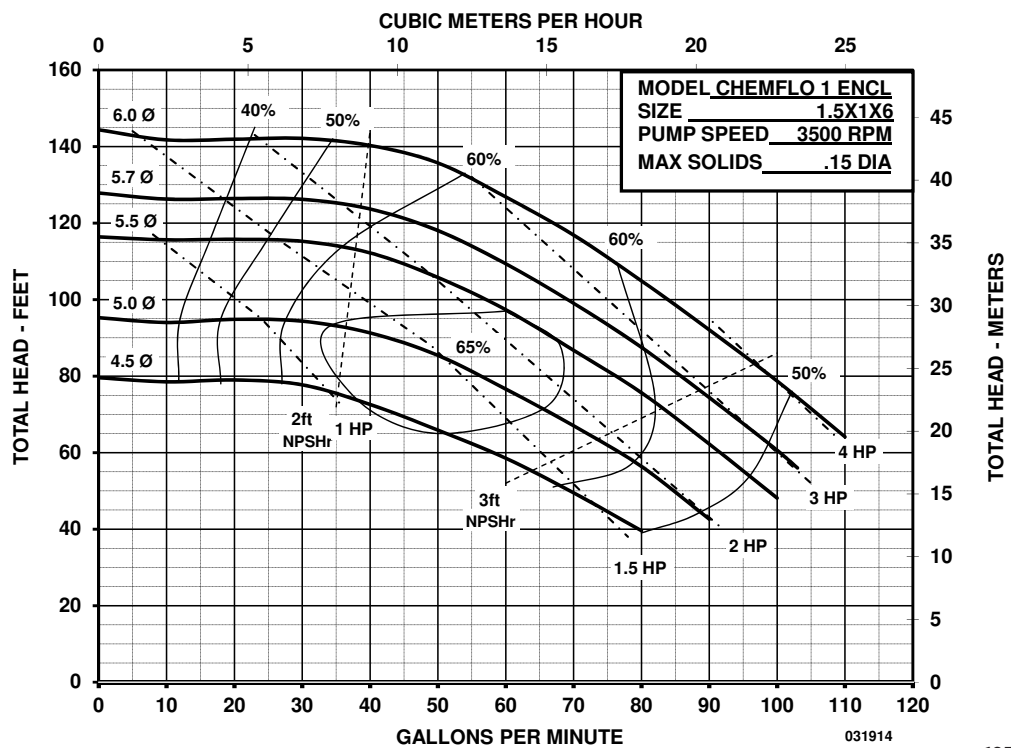
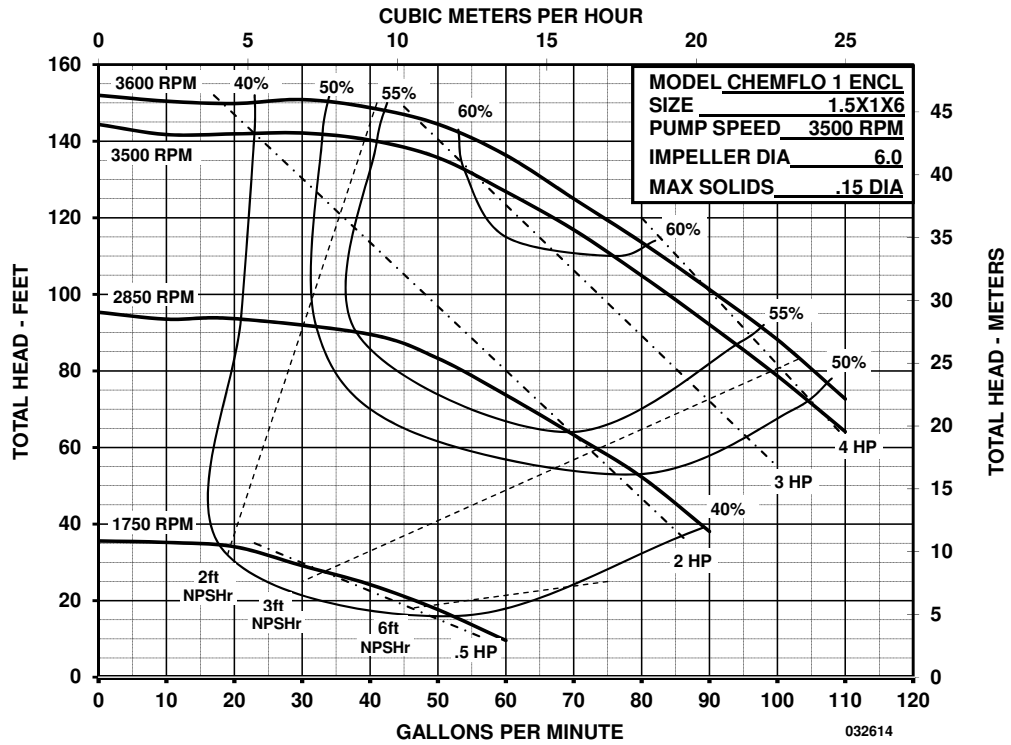
12500 South Pulaski Road  
Alsip, IL 60803, USA  
Phone (800) 563-8006



An Ingersoll Rand Business

# CHEMFLO 1 CC

## PERFORMANCE CURVES



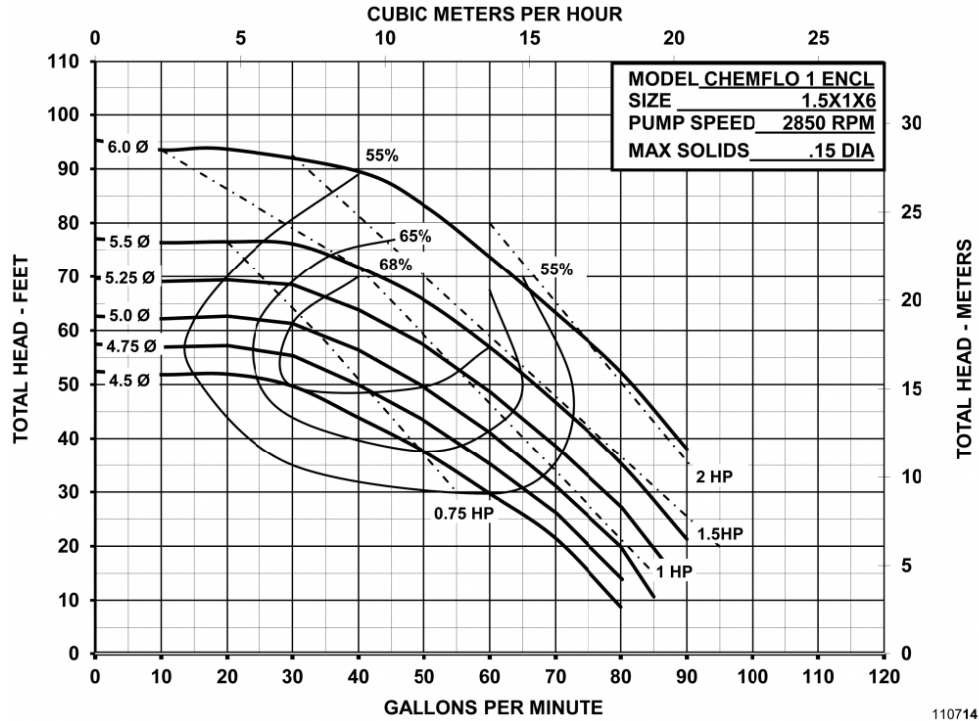
12500 South Pulaski Road  
 Alsip, IL 60803, USA  
 Phone (800) 563-8006



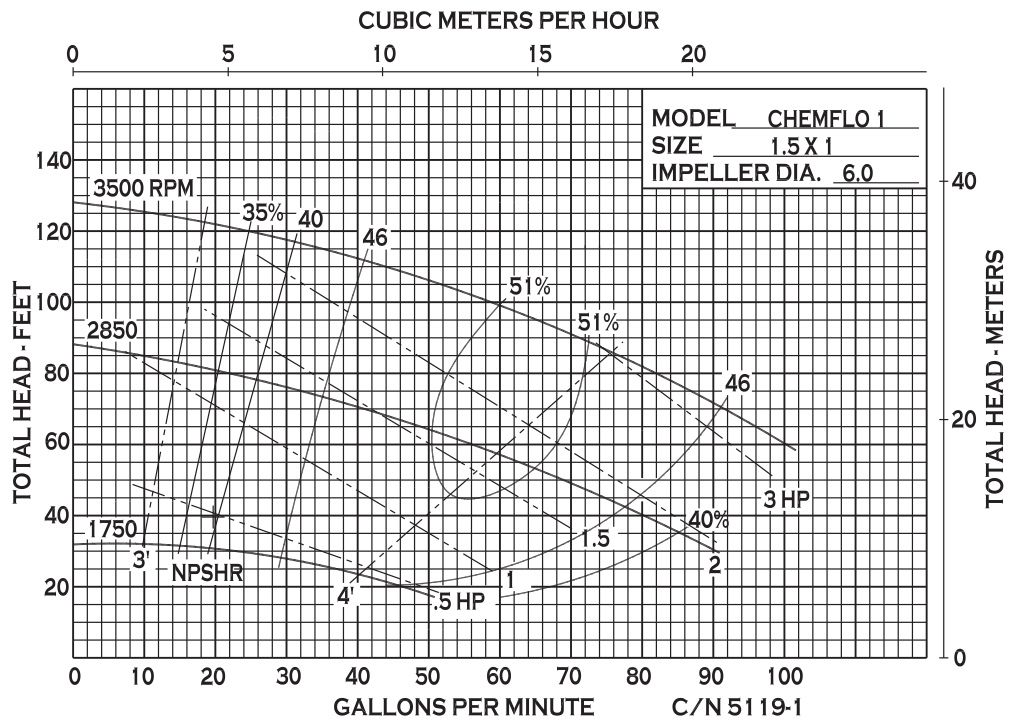
An Ingersoll Rand Business

# CHEMFLO 1 CC

## PERFORMANCE CURVES



110714



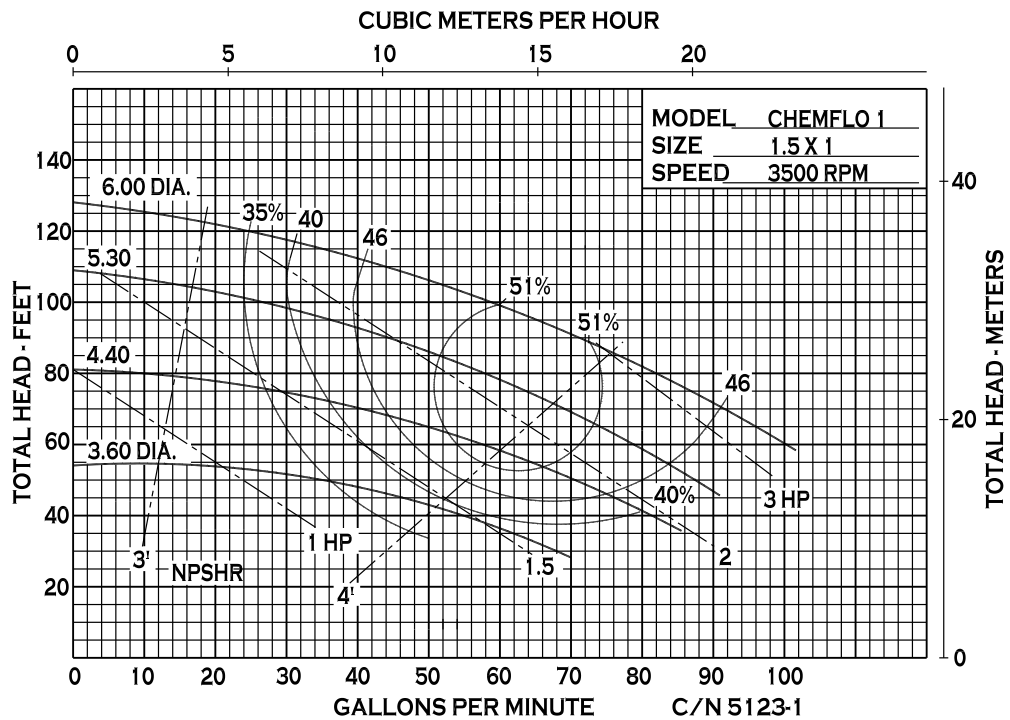
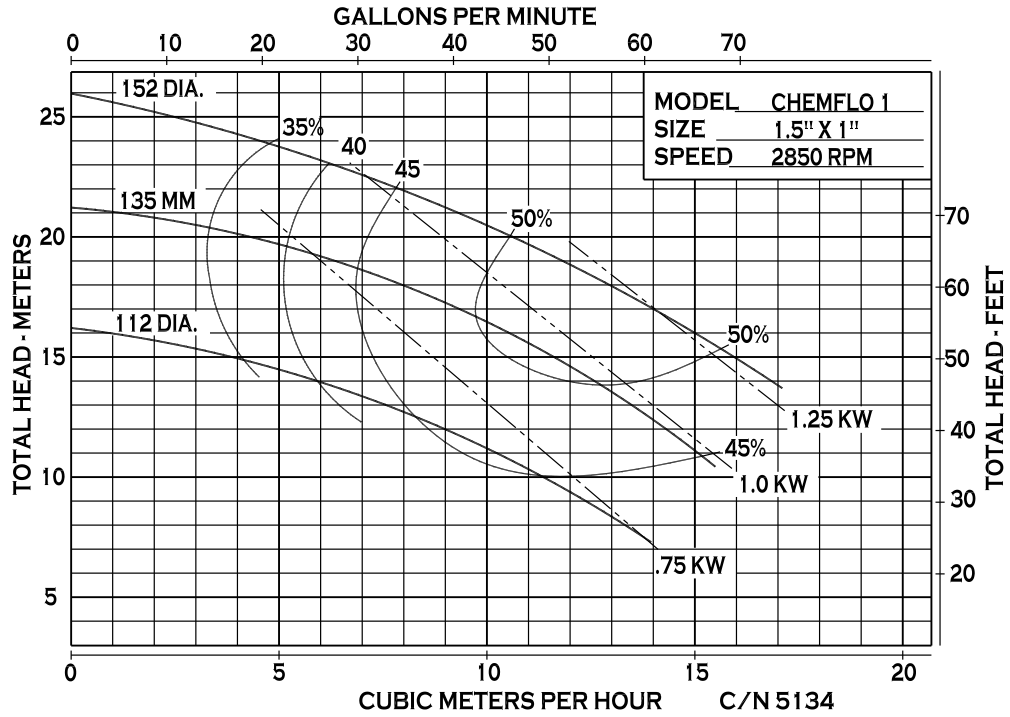
12500 South Pulaski Road  
 Alsip, IL 60803, USA  
 Phone (800) 563-8006



An Ingersoll Rand Business

# CHEMFLO 1 CC

## PERFORMANCE CURVES



12500 South Pulaski Road  
 Alsip, IL 60803, USA  
 Phone (800) 563-8006

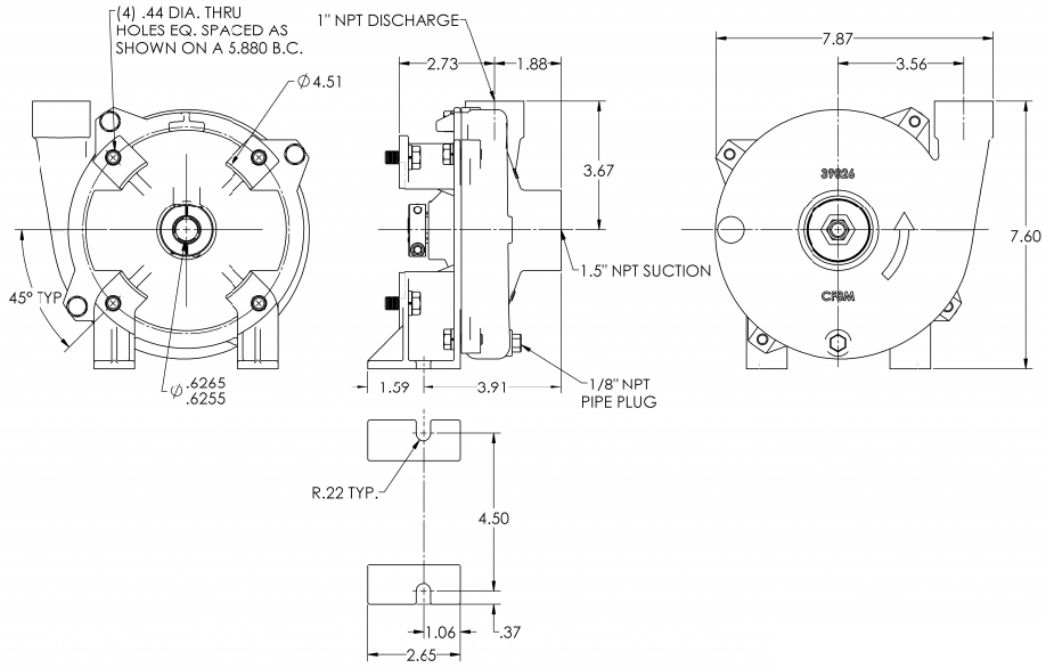


An Ingersoll Rand Business

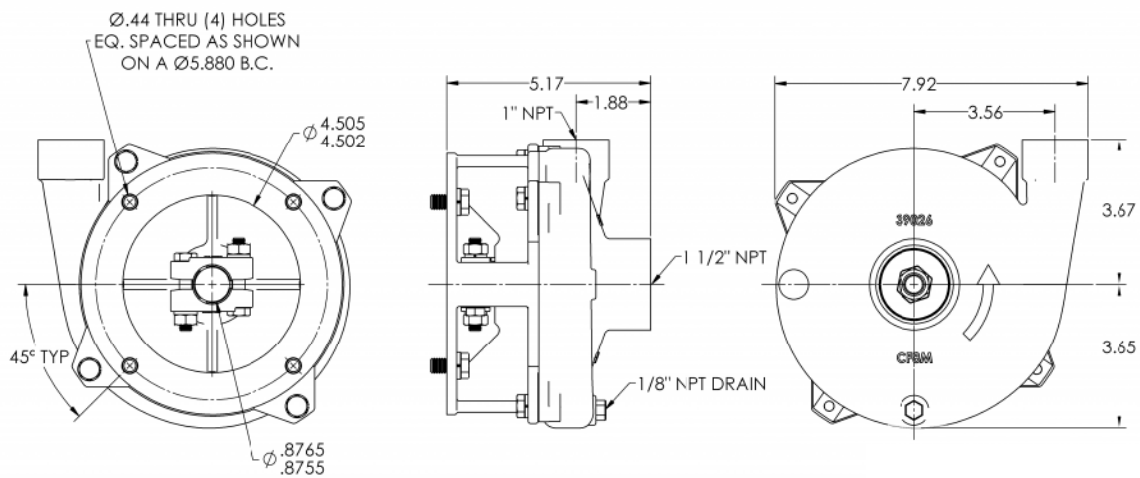
# CHEMFLO 1 CC

## DIMENSIONS

CF1 PUMPAK for 56C Motor



CF1 PUMPAK for 145TC Motor



\* For complete parts lists and troubleshooting guidance, please refer to the MP Pumps Installation Operation & Maintenance (IOM) Manual.



12500 South Pulaski Road  
Alsip, IL 60803, USA  
Phone (800) 563-8006