

CHEMFLO 8 Hydraulic

3" x 1-1/2" End Suction Centrifugal Pump

Made with high quality investment cast 316 stainless steel components, the ChemFlo® series of pumps are designed to be applied in a wide range of pumping applications where stainless steel is required.

The ChemFlo® 8 hydraulic pumps utilize an enclosed impeller designed for achieving higher heads and efficiencies than a standard semi-open impeller. Multiple hydraulic flows allow the ChemFlo® 8 to meet most duty points up to 395 GPM (89.7 m³/h) and total head up to 305 feet (93 m). Several mechanical seal options are available in addition to the standard type 2100 carbon / ceramic / Viton mechanical seal.

ChemFlo® 8 hydraulic pumps are offered with a 1.59 cubic inch displacement SAE port fitting gerotor type motor for hydraulic flows up to 26 GPM (5.9 m³/h) and a maximum pressure of 2400 PSI (165 bar). Some hydraulic motors are bi-rotational.

SPECIFICATIONS:

| | |
|----------------------------------|---|
| Suction / Discharge | 3" x 1-1/2" 125# ANSI flange |
| Materials of Construction | 316 stainless steel |
| Flow | Up to 395 GPM (89.7 m ³ /h) |
| Head Feet | Up to 305' (93 m) |
| Impeller | 8.0" (203.2 mm) enclosed, cast 316 SS |
| Drive Options | Hydraulic motor 1.59 cu. in. (26.0 cm ³) |
| Seal | Special seal material combinations available (consult factory), Standard carbon / ceramic / Viton |
| PSI / bar | Up to 134 PSI / 9.2 bar |
| Hydraulic System Pressure | Up to 2400 PSI (165 bar) |
| Hydraulic Fluid Flow | Up to 26 GPM (5.9 m ³ /h) |
| Hydraulic Motor | Gerotor |

Application:

- Agricultural
- Commercial
- Industrial
- Marine
- OEM



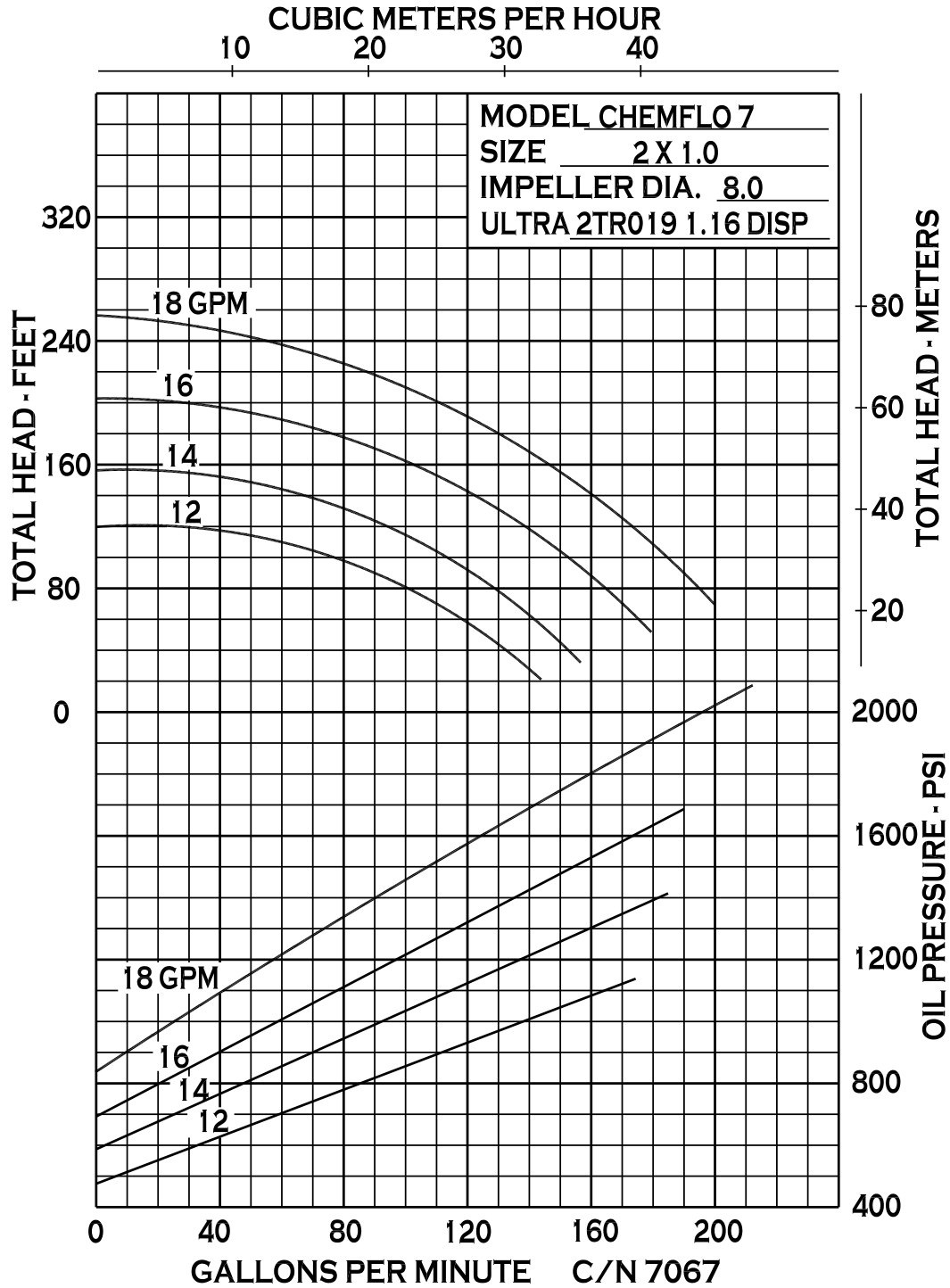
12500 South Pulaski Road
Alsip, IL 60803, USA
Phone (800) 563-8006



An Ingersoll Rand Business

CHEMFLO 8 Hydraulic

PERFORMANCE CURVES



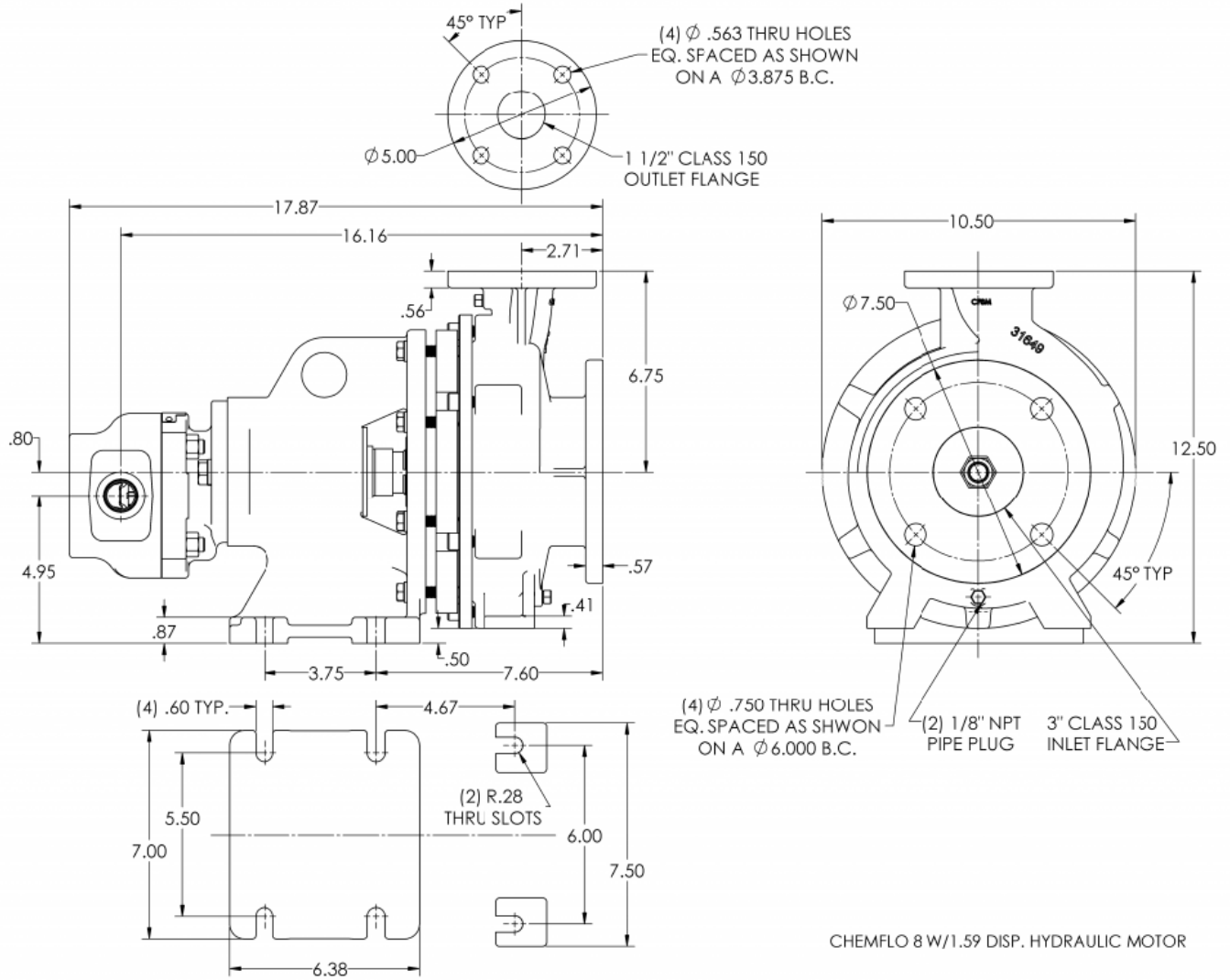
12500 South Pulaski Road
Alsip, IL 60803, USA
Phone (800) 563-8006



An Ingersoll Rand Business

CHEMFLO 8 Hydraulic

DIMENSIONS



* For complete parts lists and troubleshooting guidance, please refer to the MP Pumps Installation Operation & Maintenance (IOM) Manual.



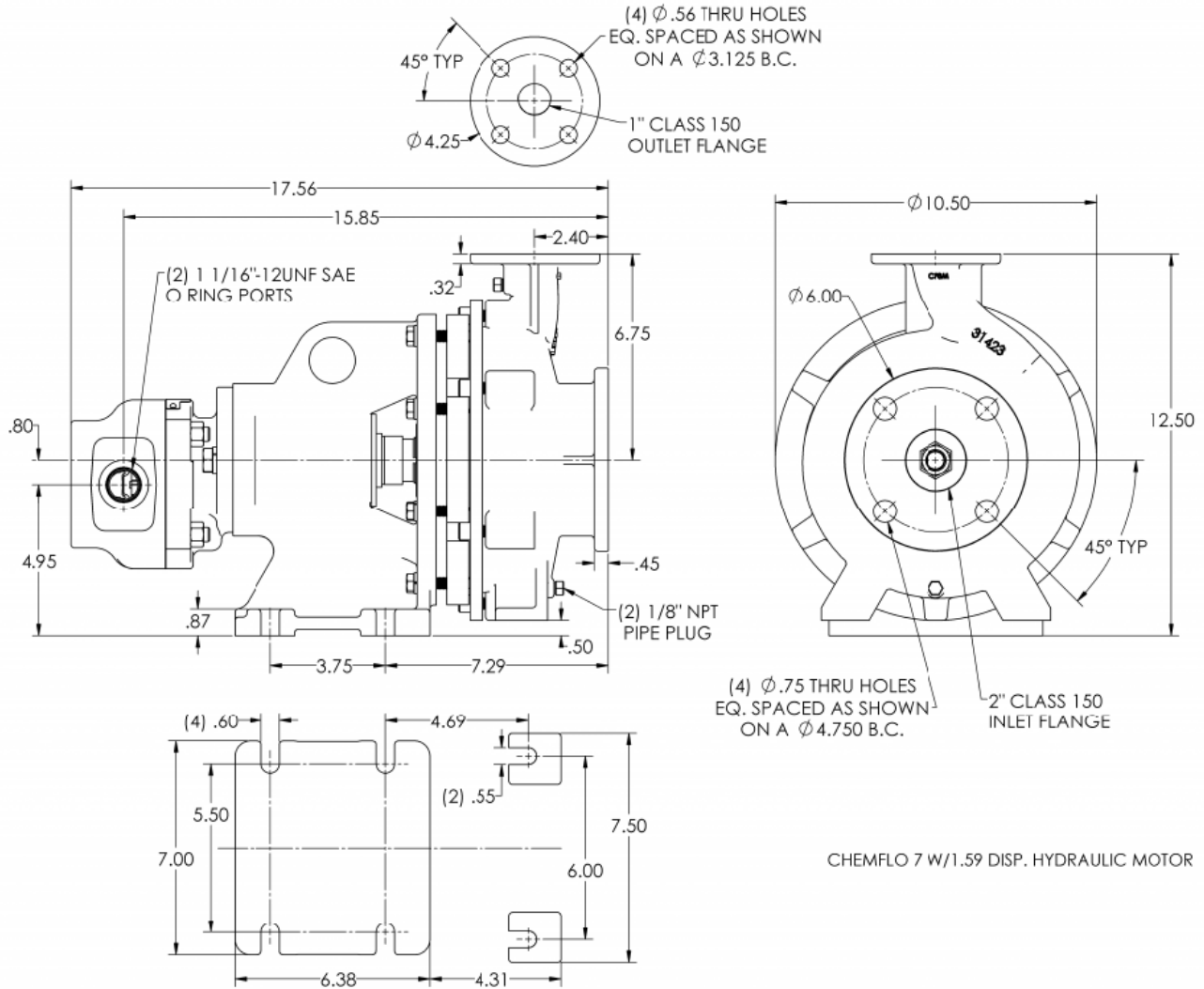
12500 South Pulaski Road
 Alsip, IL 60803, USA
 Phone (800) 563-8006



An Ingersoll Rand Business

CHEMFLO 8 Hydraulic

DIMENSIONS



* For complete parts lists and troubleshooting guidance, please refer to the MP Pumps Installation Operation & Maintenance (IOM) Manual.



12500 South Pulaski Road
Alsip, IL 60803, USA
Phone (800) 563-8006