



FLOMAX 15 316 SS

3" x 3" 316 SS Self-Priming Centrifugal Pump

The FLOMAX 15 316 SS Self-Priming Centrifugal Pump is engineered for demanding industrial, agricultural, marine, and OEM applications. Constructed from 316 stainless steel, it offers exceptional durability and resistance to corrosion and wear. Its self-priming design enables the pump to generate a vacuum strong enough to lift liquids from depths of up to 25 feet, making it well-suited for challenging environments where reliability is essential.

After initial priming, the integrated flapper valve retains a full column of liquid in the suction line, ensuring smooth and continuous operation. The FLOMAX 15 316 SS PumPAK® comes fully assembled and tested, ready to pair with various drivers such as hydraulic motors, 184TC and 215C frame motors, or gas engines. For added versatility, a bearing pedestal option supports T-frame motor or belt-drive setups.

Key features include a 3" NPT 150# class flat flange on the suction side, a Viton flapper, and a 3" SAE 4-bolt flat face discharge connection. The pump's robust design incorporates a stainless steel drive sleeve, corrosion-resistant fasteners, a renewable wear plate, and a semi-open dynamically balanced impeller. Optional upgrades include a 5-blade stainless steel impeller and specialized seals for abrasive or corrosive applications, allowing customization for specific operational needs.

SPECIFICATIONS:

Suction / Discharge	<p>Suction: 3" NPT ANSI 150# class flat flange with Viton flapper</p> <p>Discharge: 3" ANSI 4-bolt flange connection, Optional 3" NPT ANSI 150# Flange Available.</p> <p>Part number for Optional Discharge Flange Kit: MP38647</p>
Flow	Up to 300 GPM (68 m ³ /h)
Head Feet	Up to 136' (41 m)
Impeller	6.0" (152.4 mm) max. diameter, semi-open
Motor	Up to 10 HP (7.35 kW)
Seal	Carbon/Ceramic/Viton, Special seal material combinations available (consult factory)
Drive Options	<p>Close Coupled to 184TC</p> <p>Close Coupled to 215C</p> <p>Engine mount to 11 HP (8.0 kW)</p> <p>Engine mount to 13 HP (9.6 kW)</p> <p>Pedestal</p> <p>PumPAK® (without motor)</p>
Options	<p>5 blade impeller for higher flows</p> <p>Available 3" NPT ANSI 150# class discharge flange kit (p/n: MP38647)</p> <p>Hydraulic motor .73 cu. in. (11.96 cm³)</p>

Features

- Renewable wear plate
- Up to a 25' (7.6 m) suction lift
- ABS Type Approved

Application

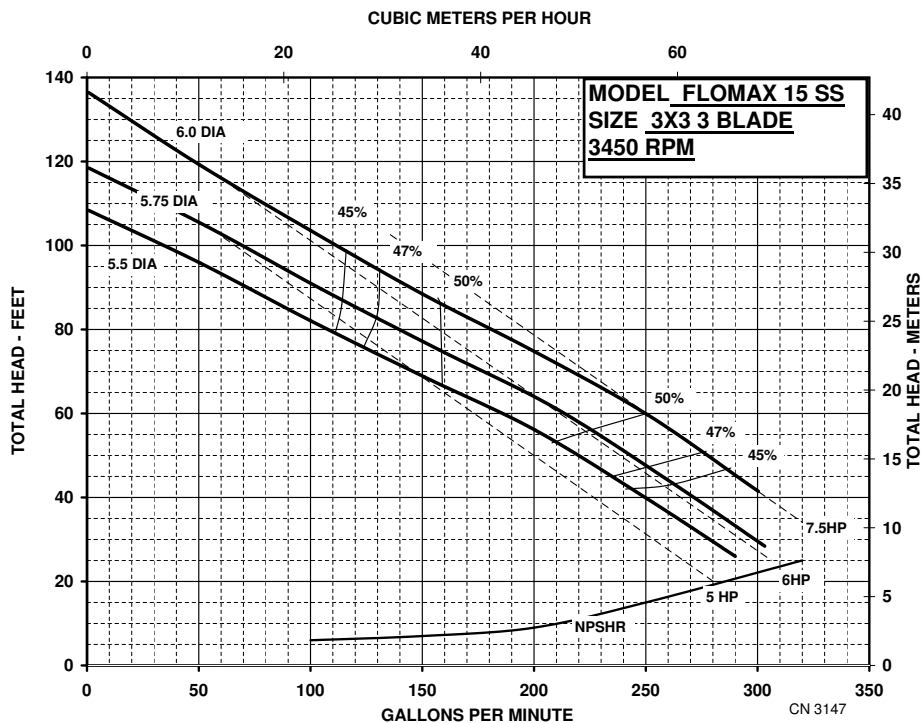
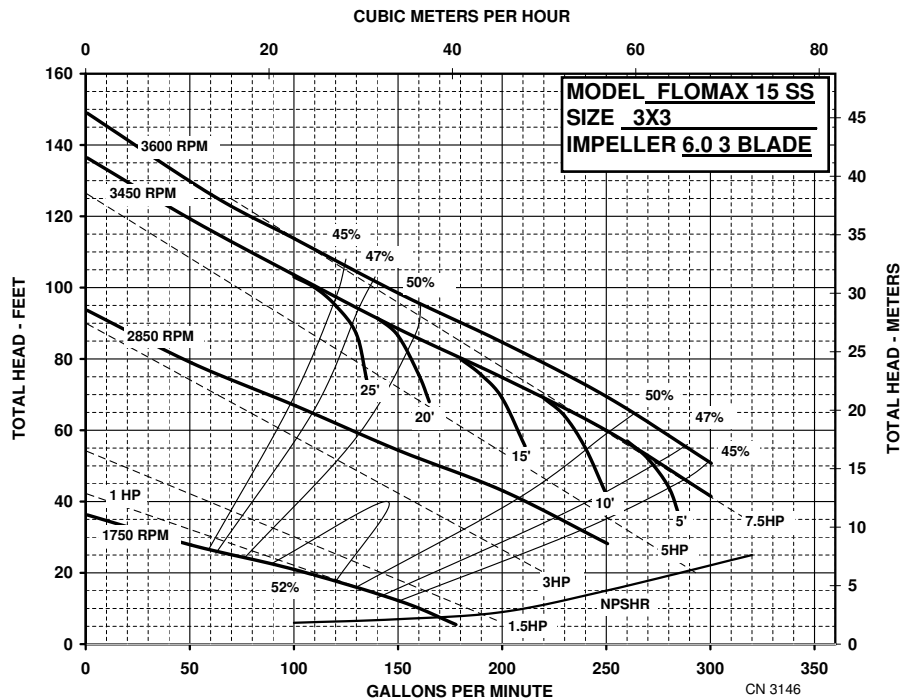
- Agricultural
- Industrial
- Marine
- OEM



An Ingersoll Rand Business

FLOMAX 15 316 SS

PERFORMANCE CURVES



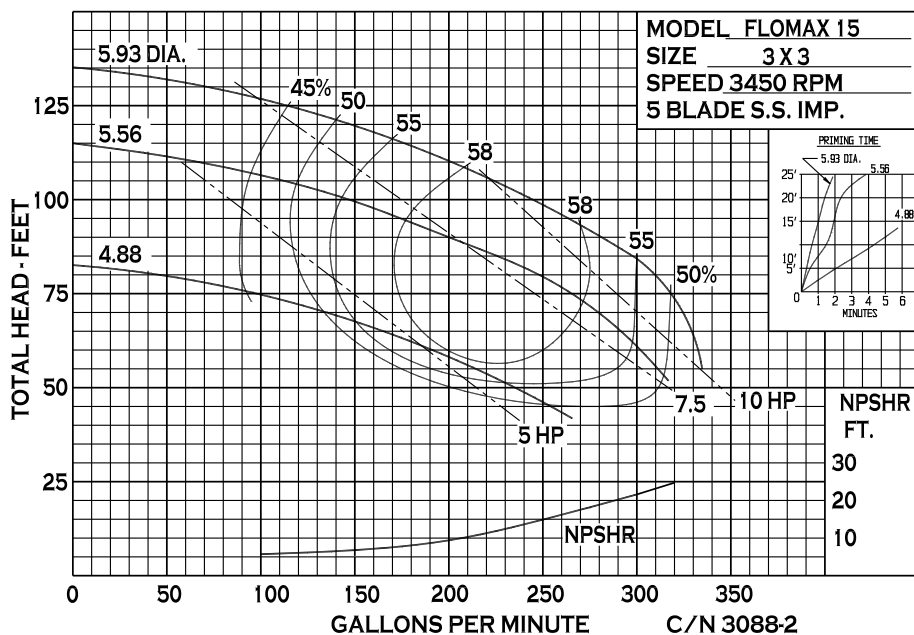
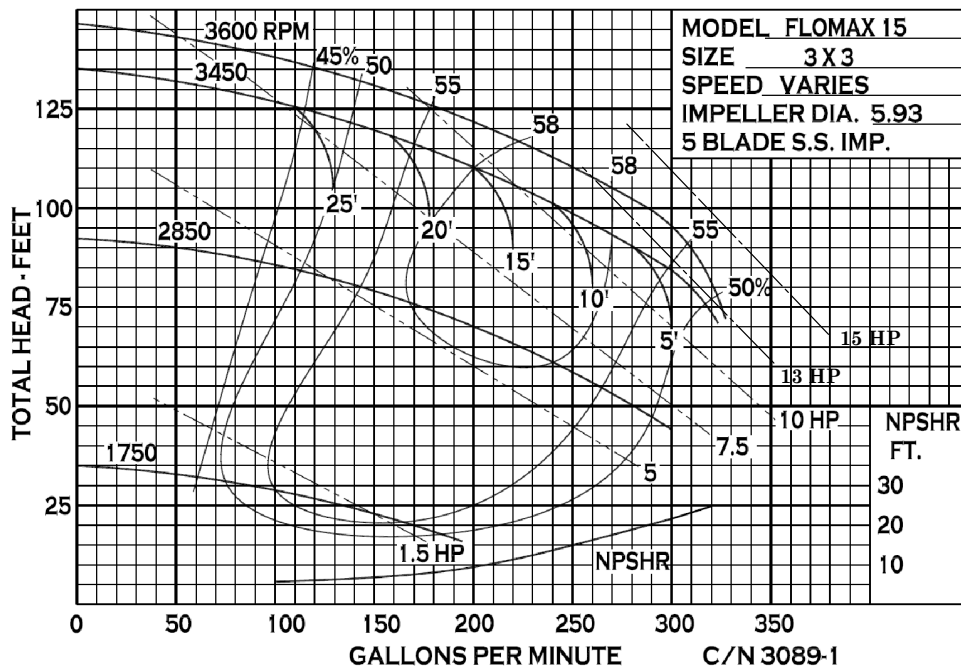
12500 South Pulaski Road
 Alsip, IL 60803, USA
 Phone (800) 563-8006



An Ingersoll Rand Business

FLOMAX 15 316 SS

PERFORMANCE CURVES



12500 South Pulaski Road
Alsip, IL 60803, USA
Phone (800) 563-8006

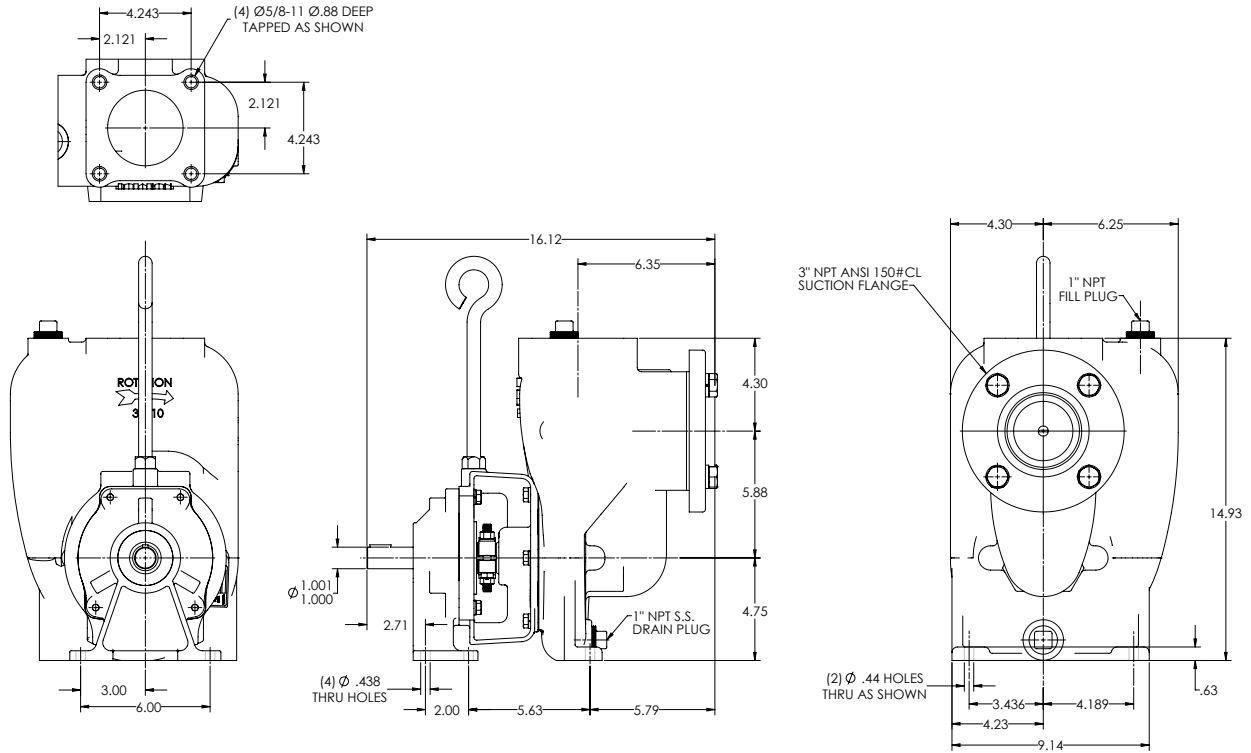


An Ingersoll Rand Business

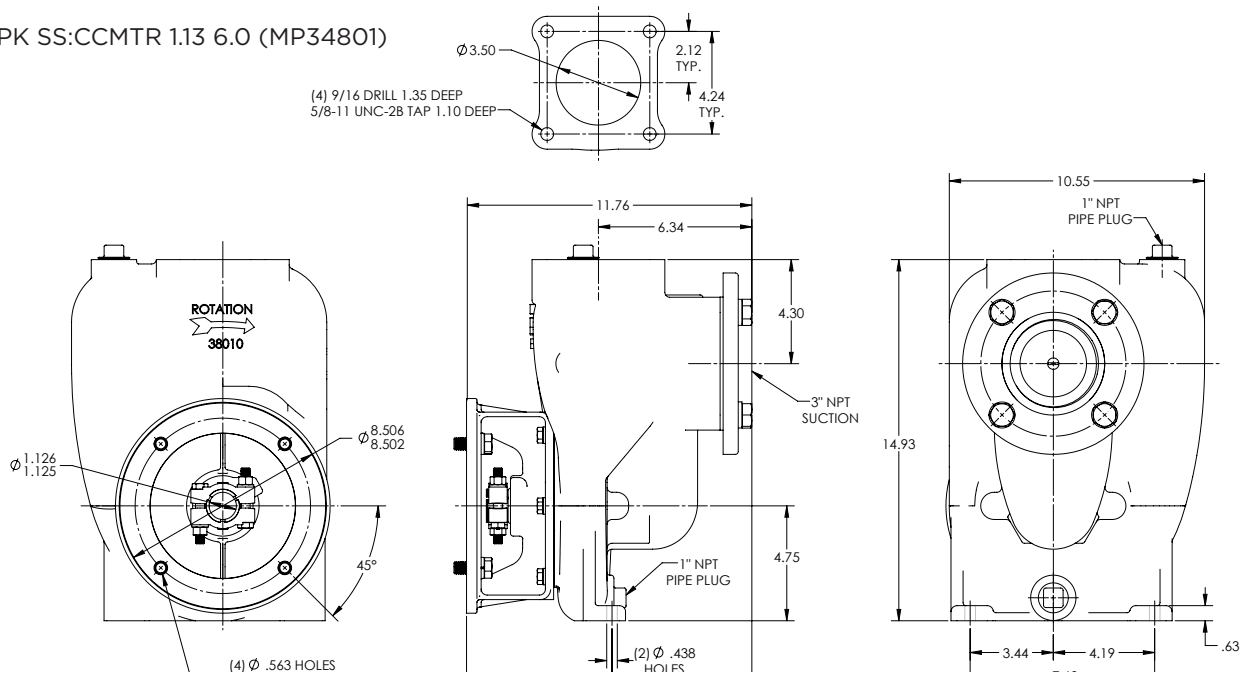
FLOMAX 15 316 SS

DIMENSIONS

FM 15 PED. INSTALLATION (MP34793)



FM15PPK SS:CCMTR 1.13 6.0 (MP34801)



* For complete parts lists and troubleshooting guidance, please refer to the MP Pumps Installation Operation & Maintenance (IOM) Manual.



12500 South Pulaski Road
Alsip, IL 60803, USA
Phone (800) 563-8006

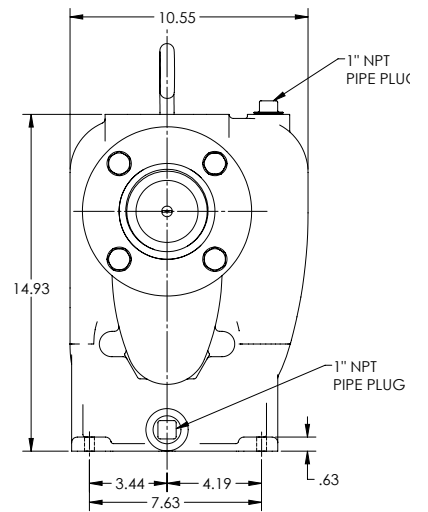
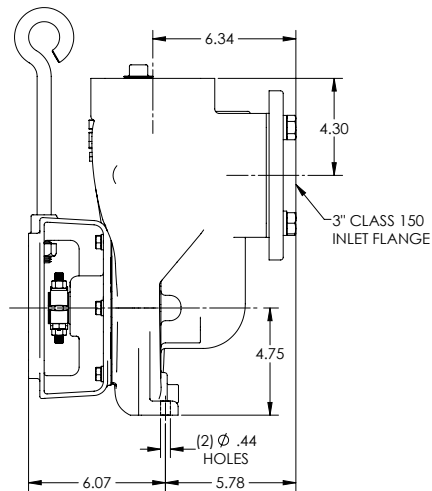
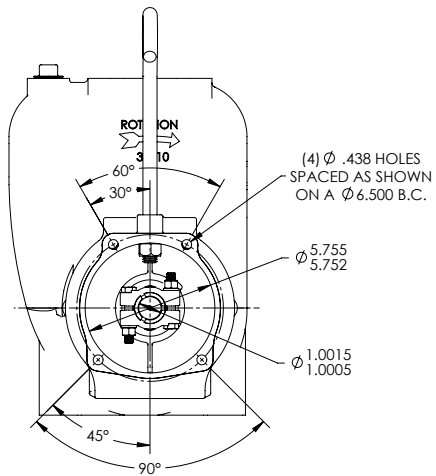
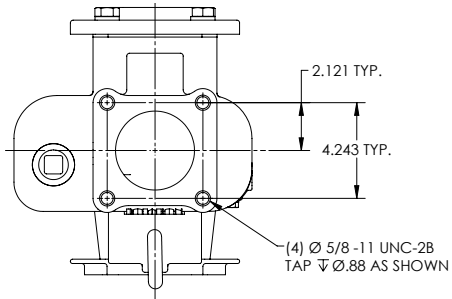


An Ingersoll Rand Business

FLOMAX 15 316 SS

DIMENSIONS

FM15PPK SS:PEM 6.0 (MP34792)



* For complete parts lists and troubleshooting guidance, please refer to the MP Pumps Installation Operation & Maintenance (IOM) Manual.



12500 South Pulaski Road
Alsip, IL 60803, USA
Phone (800) 563-8006