



FLOMAX 15 SS Double Seal

3" x 3" 316 SS, Double Seal, Self-Priming Centrifugal Pump

The FLOMAX 15 Stainless Steel Double Seal pump is designed for high-demand fluid transfer operations, delivering exceptional durability and performance. Made from 316 investment-cast stainless steel, this self-priming centrifugal pump provides outstanding protection against corrosion, making it well-suited for handling aggressive or harsh liquids in industrial environments.

A key advantage of the FLOMAX 15 SS Double Seal model is its advanced sealing system. Featuring a double mechanical seal lubricated with grease, the pump is capable of running dry without causing damage, greatly increasing service life while safeguarding the seal from corrosive media. Additionally, the pressurized barrier fluid system keeps the seal chamber at a higher pressure level than the pumped product, preventing any process fluid from entering and maintaining reliable operation in challenging conditions.

This pump has demonstrated reliable performance across many industries, including fertilizer distribution, railcar transfer operations, DEF systems, chemical processing, and wastewater applications. Its sturdy build and enhanced sealing technology make it an excellent choice for a wide range of critical fluid-handling tasks.

The FLOMAX 15 SS Double Seal model is certified with ABS Type Approval.

SPECIFICATIONS:

Suction / Discharge	<p>Suction: 3" NPT 150# class flat flange</p> <p>Discharge: 3" ANSI 4-bolt flange connection, Optional 3" NPT ANSI 150# Flange Available.</p> <p>Part number for Optional Discharge Flange Kit: MP38647</p>
Pump Materials	316 stainless steel
Flow	Up to 350 GPM (79 m ³ /h)
Head Feet	Up to 130' (40 m)
Impeller	5.94" (150.87 mm) max. diameter, semi-open
Seal	Type 31, Silicon Carbide/Silicon Carbide/Viton
Drive Options	<p>Close Coupled to 184TC</p> <p>Close Coupled to 215C</p> <p>Engine Mount</p> <p>Hydraulic Drive</p> <p>Pedestal Mount</p> <p>PumPAK® (without motor)</p>

Features

- ABS Type Approved

Application

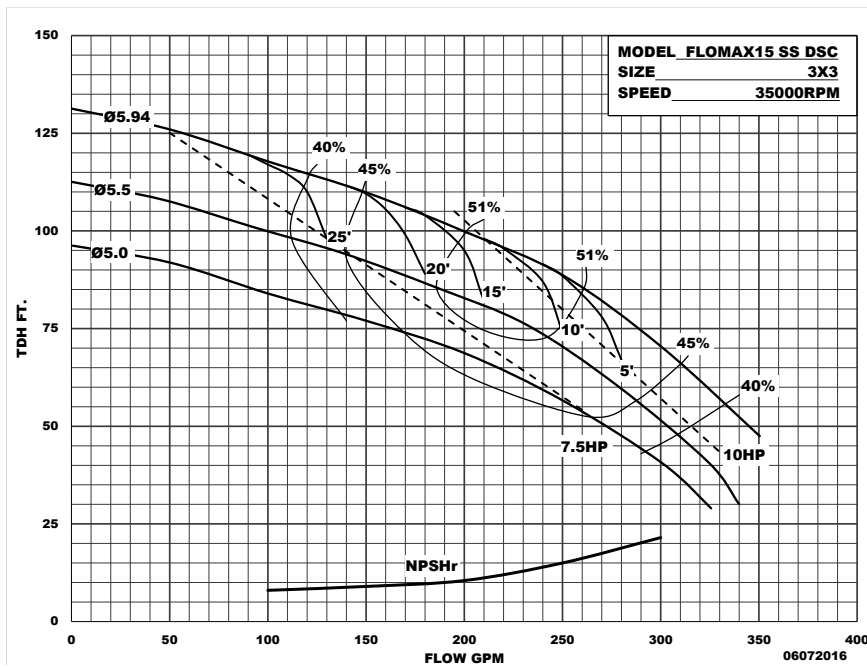
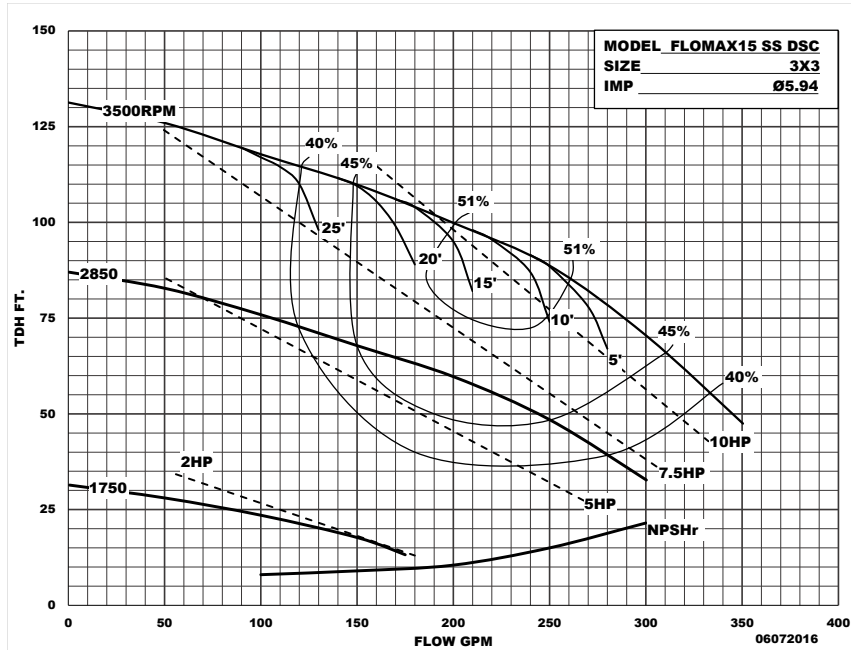
- Agricultural
- Commercial
- Industrial
- OEM



An Ingersoll Rand Business

FLOMAX 15 316 SS Double Seal

PERFORMANCE CURVES



12500 South Pulaski Road
Alsip, IL 60803, USA
Phone (800) 563-8006

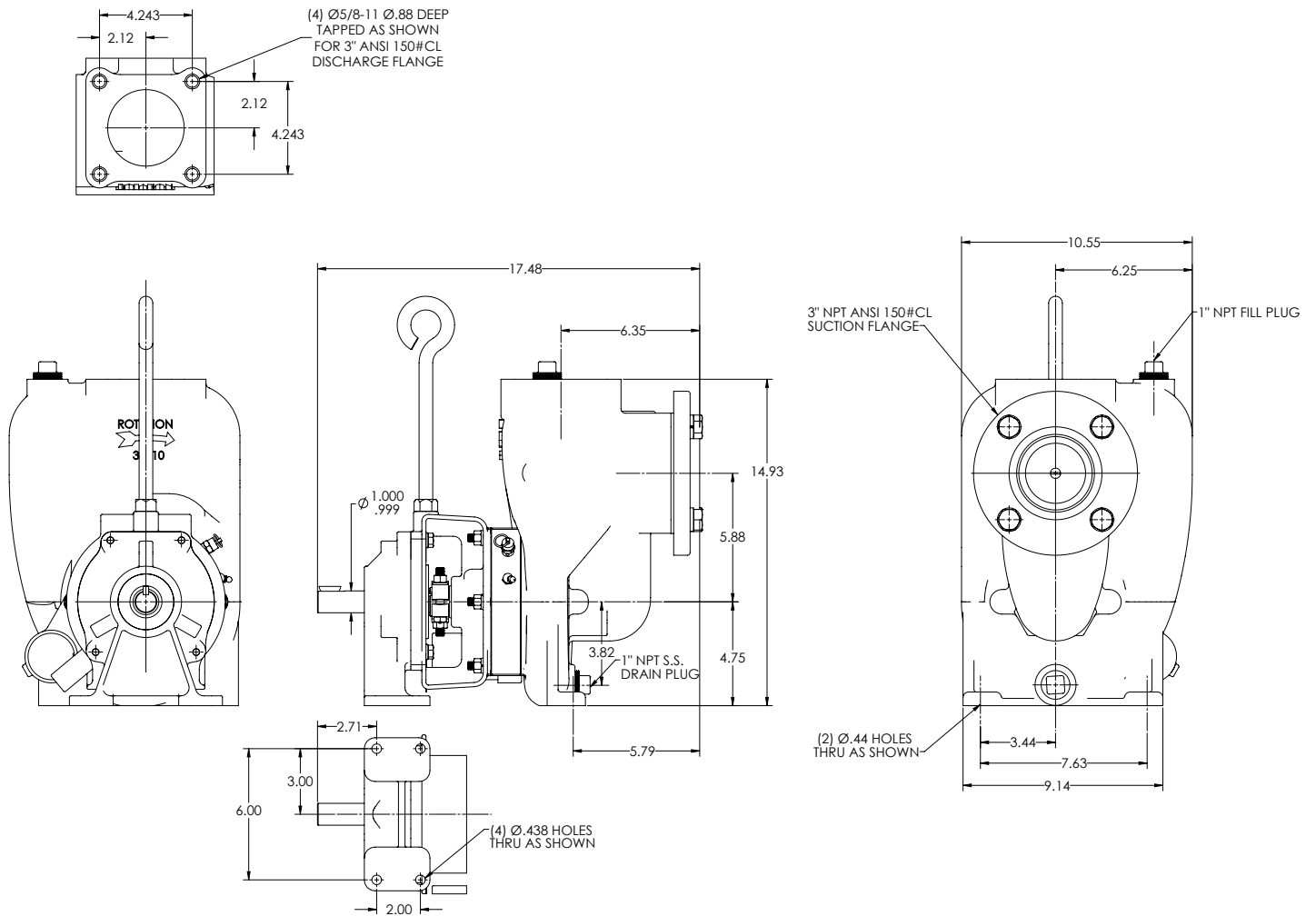


An Ingersoll Rand Business

FLOMAX 15 316 SS Double Seal

DIMENSIONS

FM 15 PED. INSTALLATION (MP39866)



* For complete parts lists and troubleshooting guidance, please refer to the MP Pumps Installation Operation & Maintenance (IOM) Manual.



12500 South Pulaski Road
Alsip, IL 60803, USA
Phone (800) 563-8006