

**CATALOG OF METER CONNECTION DEVICES
APPROVED BY DISTRIBUTION STANDARDS**

TABLE OF CONTENTS

INFORMATION & REQUIREMENTS FOR METER CONNECTION DEVICES	1
ANCHOR.....	6
BRIGGS AND STRATTON.....	6
CUTLER HAMMER	7
CUTLER HAMMER (Continued)	8
DURHAM.....	9
DURHAM (Continued).....	10
ELECTRICAL PRODUCTS CORP. (EPC)	11
ERICKSON.....	12
ERICKSON (Continued).....	13
GENERAL ELECTRIC COMPANY	14
Siemens	15
Siemens* (Continued).....	16
Siemens (Continued).....	17
METER DEVICES COMPANY.....	18
MIDWEST ELECTRIC PRODUCTS	19
MILBANK.....	20
MILBANK (Continued).....	21
MURRAY ELECTRICAL PRODUCTS	22
RONK ELECTRICAL INDUSTRIES.....	23
SQUARE D COMPANY	24
SWITCHBOARD APPARATUS CO.....	25
THOMAS & BETTS *.....	26

Approved Meter Connection Devices

TRANSFORMER RATED METER CONNECTION DEVICES	27
APPROVED CURRENT TRANSFORMER COMPARTMENTS	28
METER SOCKET MANUFACTURERS AND LOCAL REPRESENTATIVES...	30

INFORMATION & REQUIREMENTS FOR METER CONNECTION DEVICES

I. BASIC REQUIREMENTS

Regarding meter connection devices that are approved for use in the ComEd service area, the basic requirements are as follows:

- 1) All meter connection devices must have CECHA stamp.
- 2) All meter connection devices must have ringless covers and reinforced jaws
- 3) By-passes are required on all meter sockets (horn type on single-phase and lever arm type on polyphase).

The above requirements are listed on each of the manufacturers' pages in this catalog to further emphasize their importance.

II. TYPICAL METER CONNECTION DEVICES

The arrangement of meter connection devices will generally fall into one of the following categories:

- 1) Single position overhead
- 2) Single position underground (with raceway)
- 3) Multiple position horizontal grouped sockets (overhead or underground service)
- 4) All-In-One type multiple position metering unit (overhead or underground service)
- 5) Vertically grouped sockets (multiple position; indoor or outdoor)
- 6) Switchboard type metering panels (multiple position; indoor)

Diagrams of these various categories are shown in Exhibit A.

Categories 1 through 4 above will generally be installed outdoors. The vertically grouped sockets (category 5) can be installed indoors or outdoors. The installation of vertical sockets will be covered in greater detail in Section V. Category 6 (switchboard type metering panels) are designed for indoor installation, mainly in commercial buildings.

III. METER MOUNTING HEIGHTS

Meter connection devices must be installed at heights where meters can be installed and read safely by meter personnel standing adjacent to the meter. Access to meters by crawling on hands and knees or by standing on a ladder is **not** acceptable. The minimum meter mounting height is 30-inches, and the maximum height can be 60 to 72 inches depending on the type of meter connection device. The minimum and maximum meter mounting heights are shown in Exhibit A.

INFORMATION & REQUIREMENTS (Continued)

IV. RACEWAY REQUIREMENTS FOR UNDERGROUND SERVICE

Wherever an underground service is to be connected to a meter connection device, a raceway must be used to route the cables to the terminals within the device. This is evident in all the single position underground devices that are currently CECHA listed, as they are all designed as a combination meter socket and raceway. This is true of both single-phase and polyphase units. Regarding the multi-position units such as the All- In-One type or the horizontal grouped sockets as shown in Exhibits A and B, a raceway is required on all underground service connections to these units. These raceways are available from some socket manufacturers and local switchboard builders.

V. REQUIREMENTS ASSOCIATED WITH VERTICALLY GROUPED MODULES

Vertically grouped meter connection devices (meter modules) are generally available in 2, 3 or 4 positions and they can be bussed together to provide multiple meter points at a single location. An example of where these meter modules would be used is in a multi-story building in meter rooms on the various floors of the building.

These meter modules are always installed with some type of main device which can be a termination box, fused switch, or circuit breaker. The electric service supply will terminate in this main device, and the meter modules will be internally connected to this main device by buss bars.

The main device can be connected directly to the adjacent meter modules if both units have the same front to rear dimension (or depth). However, if the main device has a greater depth than the adjacent meter modules, a spacer is required between the two units. Exhibit C outlines the conditions where a spacer is required. In most of these types of installations utilizing vertical meter modules, a spacer **will** be required between the main device and adjacent meter modules. Exhibit B also outlines meter module installation on adjacent corner walls in a meter room and frontal clearance requirements.

Regarding the meter mounting heights outlined in Section III. above, a 4-position single-phase module and a 3-position polyphase module is the maximum size that can be used which will comply with these dimensions. In some cases, installation of 5-position single-phase meter modules will be allowed, but prior approval is required from System Meter in Oak Brook.

VI. ADDITIONAL INFORMATION

For additional information on the installation of meter connection devices and related equipment refer to the ComEd's "Service and Meter Requirements" handbook.

Service and Meter Requirements
[service_and_meter_requirements.pdf \(comed.com\)](https://www.comed.com/service_and_meter_requirements.pdf)

Exhibit A

Typical Meter Connection Devices and Mounting Heights (Minimum & Maximum)

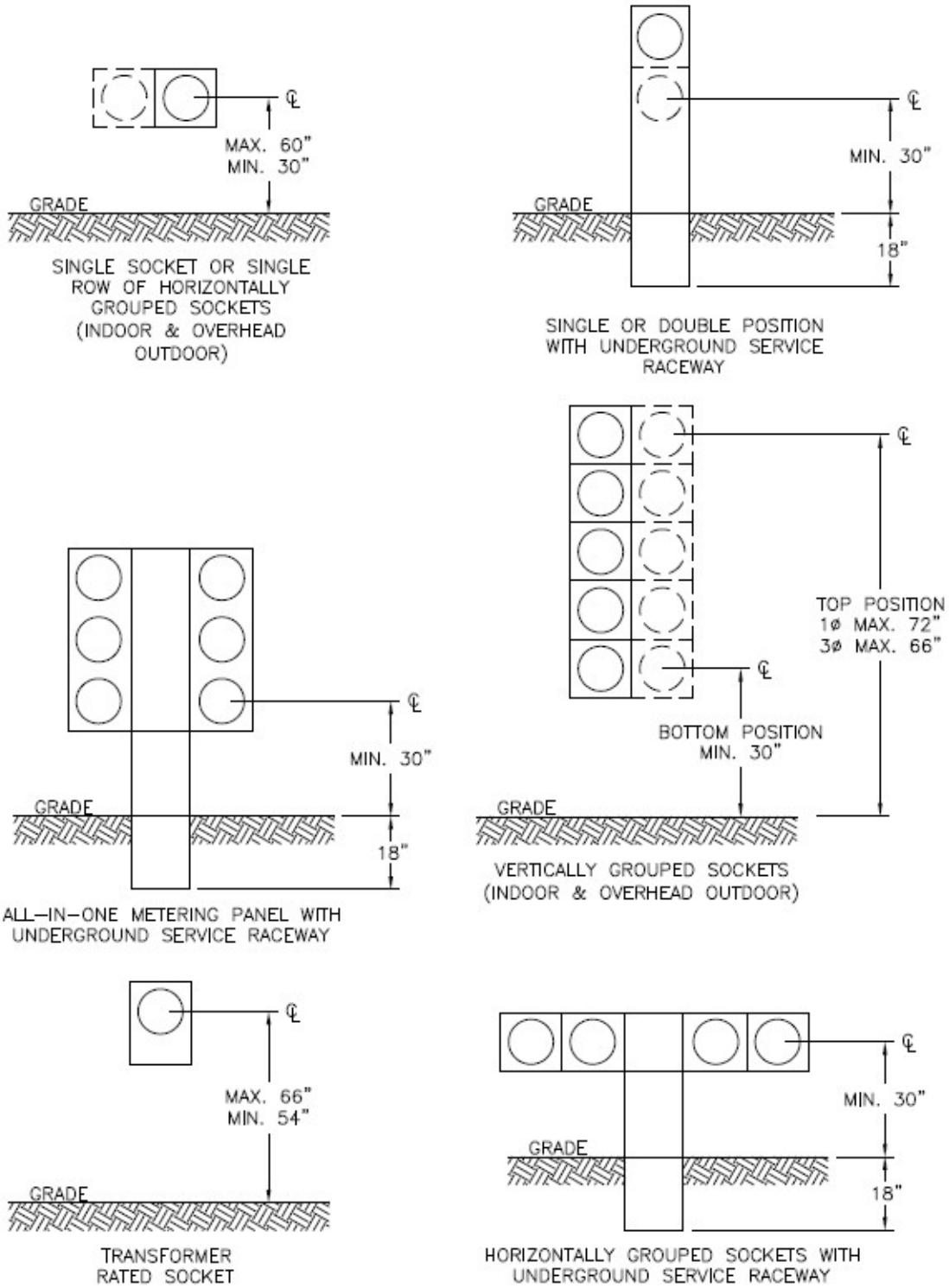
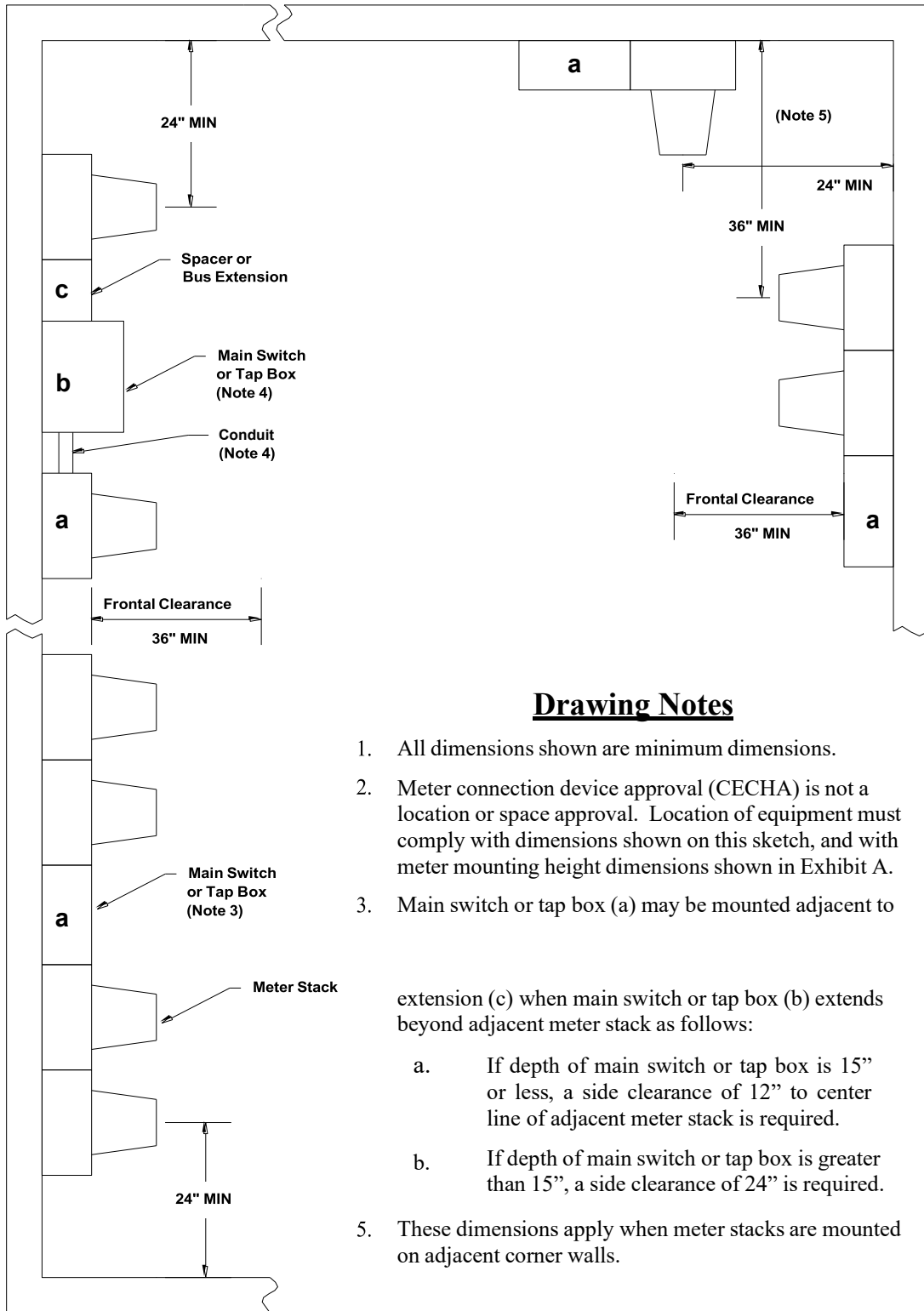


Exhibit B

Frontal and Side Clearances



Drawing Notes

1. All dimensions shown are minimum dimensions.
2. Meter connection device approval (CECHA) is not a location or space approval. Location of equipment must comply with dimensions shown on this sketch, and with meter mounting height dimensions shown in Exhibit A.
3. Main switch or tap box (a) may be mounted to extension (c) when main switch or tap box (b) extends beyond adjacent meter stack as follows:
 - a. If depth of main switch or tap box is 15" or less, a side clearance of 12" to center line of adjacent meter stack is required.
 - b. If depth of main switch or tap box is greater than 15", a side clearance of 24" is required.
5. These dimensions apply when meter stacks are mounted on adjacent corner walls.

Notes

The following notes apply to all meter connection devices that are used in ComEd's service territory

- All meter connection devices must have CECHA stamp.
- All meter connection devices must have ring less covers and reinforced jaws.
- Bypasses are required on all meter sockets (horn type on single- phase and lever arm type on polyphase).
- When using switchboard type metering equipment that is 1200A and/or above, it is a requirement that switchboard prints be submitted on each project where the equipment is to be installed. These prints must be reviewed and approved by System Meter Engineering – Distribution Standards before the equipment is installed or energized. Send the following documents to SWBD.Approvals@ComEd.com
 - System Electrical One-line Drawings
 - Manufacturers Equipment Drawings/one-lines
 - SWBD Approval Request Form
- When using switchboard type metering equipment that is 800A and/or below, please work with Regional New Business for approval. Please contact 1-800-EDISON-1 (1-800-334-7661) for a regional engineer to be assigned for a job. Please work with Regional New Business for any questions regarding switchboard approval documents.
- For applicable metering/CT-cabinet requirements and guidelines, please refer to C9140 and C9141 in “Service and Metering Requirements” handbook.
 - [service and meter requirements.pdf \(comed.com\)](#)
- For specifications for housing instrument transformers within switchgear, refer to ESP 5.5.2.2. Please work with Regional New Business for obtaining a copy of this document as necessary.

ANCHOR

METER CONNECTION DEVICES

(All units listed are 120/240 volt, single-phase, 3-wire and for use outdoors unless noted)

OVERHEAD

URS1804B-HO-CECHA (200 amp)
URS1394B-HO (200 amp)
TB44542-HLO (320 amp)

Socket-breaker combinations

MB100R-B-HO-CH (100 amp)
MB200R-B-HO-CH (200 amp)

UNDERGROUND

MP5S204B-CECHA (200 amp)
2MP5S204B-CECHA (2-position vertical;
200 amp/position)
MP44342-CH (320 amp)

Socket-breaker combinations

MP5S204B-CH-B000 (100 amp)

OVERHEAD

MULTIPLE POSITION TROUGHS

HORIZONTAL GANGED

200 amp/position

2URS1804B-C600-HLO-CH (2-position)
3URS1804B-C600-HL (3-position)
4URS1804B-C600-HLO-CH (4-position)
6URS1804B-C600-2HLO (6-position)

POLYPHASE OVERHEAD (Rated at 600 volts)

TB42552-H7M-HP-CH (200 amp, 3-phase, 3-wire)
TB2072-H7M-HP-CH (200 amp, 3-phase, 4-wire)

TRANSFORMER RATED (Rated at 600 volts)

INDOOR/OUTDOOR

RTSS6-63W-CH (Single-phase, 3-wire)
RTSS8-73W-CH (3-phase, 3-wire)
RTSS13-13W-CH (3-phase, 4-wire)

BRIGGS AND STRATTON

METER CONNECTION DEVICES

Direct Power 200A Transfer Switch Symphony II – Model # 071095

CUTLER HAMMER

METER CONNECTION DEVICES

(All units listed are 120/240 volt, single-phase, 3-wire meter-breaker combinations unless noted)

SINGLE PHASE OVERHEAD

1009079-CH (100 amp)
1009085-CH (100 amp w/breaker)
1009581-CH (200 amp w/breaker)
1009582-CH (200 amp w/breaker) / 2-110a LB
1007665-CH (200 amp, 5th terminal kit
#ARP00035)
1007662-CH (320 amp)
1009693-CH (100 amp)
1009694-CH (100 amp)
1009695-CH (100 amp)
1009697-CH (100 amp)
1008843-CH (200 amp)

w/raceway opening

1008842-CH (200 amp) 2-position
1008843-CH (200 amp) 3-position
1008844-CH (200 amp) 4-position
1009579-CH (200 amp) 5-position
1009611-CH (200 amp) 6-position

w/o raceway opening

1008958-CH (200 amp) 2-position
1008959-CH (200 amp) 3-position
1008960-CH (200 amp) 4-position
1009925-CH (200 amp) 5-position
1009926-CH (200 amp) 6-position

SINGLE PHASE UNDERGROUND

1006388-CH (200 amp)
1008846-CH (200 amp w/breaker)
1008847-CH (320 amp w/breakers)
1008848-CH (320 amp w/breakers)

VERTICAL METER MODULES

INDOOR/OUTDOOR 125 amp/position

1MM312RRLB (3-position)
1MM412RRLB (4-position)
1MM512RRLB (5-position) (Note 4)

200 amp/position

1009265-CH (2-position)
1MM420RRLB
1MM320RRLB (3-position)
1MP4206RRLB (4-position)

320/amp/position

120/240 or 120/208 1-ph 3wire CI 320
1007672CH
35MM240R1240 (2-position)

THREE PHASE OVERHEAD

4 – Wire w/raceway opening

1009958-CH (200 amp) 2-position
1009959-CH (200 amp) 3-position
1009960-CH (200 amp) 4-position
1009961-CH (200 amp) 5-position
1009962-CH (200 amp) 6-position

THREE PHASE UNDERGROUND

1009845-CH (200 amp)

METER PACKS

ALL-IN-ONE-TYPE

INDOOR/OUTDOOR 125 amp/position

1MP2122RRLB (2-position vertical)
1MP3122RRLB (3-position vertical)
1MP4124RRLB (4-position vertical)
1MP5126RRLB (5-position, 3-high)
1MP6126RRLB (6-position, 3-high)

200 amp/position

1MP2204RRLB (2-position vertical)
1MP3204RRLB (3-position vertical)
1MP5206RRLB (5-position, 3-high)
1MP6206RRLB (6-position, 3-high)

UHTRP242363E (200 amp)

VERTICAL METR MODULES (3-Phase)

96-4356 (3,4,5,6 position) 125A
96-4347 (3,4 position) 200A
96-4046 (1 position) 200A

CUTLER HAMMER (Continued)

METER CONNECTION DEVICES

(All units listed are 120/240 volt, single-phase, 3-wire meter-breaker combinations unless noted)

**125 amp/position (120/208 volt, 3-phase
4-wire wye for use with single phase meters)**
3MM212RRLB (2-position)
3MM312RRLB (3-position)
3MM412RRLB (4-position)
3MM512RRLB (5-position) (Note 4)

**200 amp/position (120/208 volt, 3-phase,
4-wire wye for use with single phase meters)**
3MM220RRLB (2-position)
3MM320RRLB (3-position)
3MM420RRLB
35MM120R12 (1-position vertical)
35MM220R12 (2-position vertical)
35MM320R12 (3-position vertical)

POLYPHASE OVERHEAD

1007666-CH (200 amp, 3-phase, 3-wire)
1007670-CH (200 amp, 3-phase, 4-wire)

Instrument Rated Meter Sockets

USTH61A195CH
USTH81A194CH
USTH131A123CH
6 Terminal Transformer Rated Socket
Single-Phase, 3-Wire
8 Terminal Transformer Rated Socket
3-Phase, 3-Wire
13 Terminal Transformer Rated Socket
3-Phase, 4-Wire

POLYPHASE METER MODULES

INDOOR/OUTDOOR

**200 amp/position (120/208 volt 3-ph., 4-wire, wye;
120/240 volt 3-ph., 4-wire, delta)**

37MM120R12 (1-position)
37MM220R12 (2-position vertical)
37MM320R12 (3-position vertical)

400-800 amp/position

(120/240) volt, 1-ph, 3-wire)
(120/208) volt, 3-ph, 4-wire, wye)

(120/240) volt, 1-ph, 4-wire delta)

CTA Series Metering Transformer Compartment with
with disconnect

POLYPHASE

COMMERCIAL METERING SWITCHBOARDS

INDOOR SWITCHBOARD TYPE

**200 amp/position (120/240 volt 3-ph., 4-wire, delta;
120/208 volt 3-ph., 4-wire, wye;
277/480 volt 3-ph., 4-wire wye)**

TYPE CMM (Note 5)

DURHAM

METER CONNECTION DEVICES

(All units listed are rated at 600 volts, and for use outdoors)

SINGLE PHASE OVERHEAD

1009078 (200 amp unit w/100 amp breaker
5th terminal kit #ARP01085)
1009079 (100 amp, 5th terminal kit #ARP0035)
1009085 (100 amp with breaker, 5th terminal kit
1009581 (200 amp w/breaker)
1009582 (200 amp w/breaker & Load breaker
UHT-RS202B (200 amp)
1007665 (200 amp, horn bypass, 5th terminal kit
#ARP0035)
1007666 (200 amp, 5th terminal, lever bypass)
UT-H4330T (320 amp)

THREE PHASE OVERHEAD
THREE PHASE OVERHEAD

4 – Wire w/raceway opening

1009958 (200 amp) 2-position
1009959 (200 amp) 3-position
1009960 (200 amp) 4-position
1009961 (200 amp) 5-position
1009962 (200 amp) 6-position

1009694 (100 amp 3-position)
1009695 (100 amp 4-position)
1009696 (100 amp 5-position)
1009697(100 amp 6-position)

w/raceway opening

1008842 (200 amp) 2-position
1008843 (200 amp) 3-position
1008844 (200 amp) 4-position
1009579 (200 amp) 5-position
1009611 (200 amp) 6-position

w/o raceway opening

1008958 (200 amp) 2-position
1008959 (200 amp) 3-position
1008960 (200 amp) 4-position
1009925 (200 amp) 5-position
1009926 (200 amp) 6-position

UT-H5213B (200 amp, 3-phase, 3-wire)
UT-H7213B (200 amp, 3-phase, 4-wire)

POLYPHASE UNDERGROUND

1009845 (200 amp)

Raceways (Troughs) for Horizontal Gangs

1008934 (200 amp, 36 inch raceway)
1008845 (200 amp, 54 inch raceway)

SINGLE PHASE UNDERGROUND

1007488 (200 amp)
1007951 (320 amp)
1006388 (200 amp, 5th terminal kit #ARP01085)
1008961 (200 amp, 5th terminal kit #ARP01085)
1008846 (200 amp w/breaker, 5th terminal kit #ARP01085))
1009265 (200 amp 2 position)
1009564 (200 amp w/breakers)
1008847 (class 320 w/2-200amp breakers)
1008848 (class 320 with breaker provisions)

DURHAM (Continued)

METER CONNECTION DEVICES

(All units listed are rated at 600 volts, and for use outdoors.)

320/amp/position Overhead/Underground Offset

120/240 or 120/208 1-ph 3wire

1007672 (320 amp, 5th terminal kit #AARP000326)

320/amp/position Underground Pedestal

120/240 or 120/208 1-ph 3wire

1008848 (320 amp, 5th terminal kit #AARP00862)

1008962 (320 amp, 5th terminal kit #AARP00862)

1008847 (320 amp, 5th terminal kit #AARP00862)

Polyphase Overhead/Underground

1007670 (200 amp, 7 terminal, lever bypass)

Polyphase Underground Pedestal

1009845 (200 amp, 7 terminal, lever bypass)

Instrument Rated Meter Sockets

USTH13-1A123 (90020430AD)

USTH8-1A194 (90027559AD)

USTH6-1A195 (90025842AD)

RSTL13-2K (20A, 13 terminal for 6s, 8S, 9S)

ELECTRICAL PRODUCTS CORP. (EPC)

METER CONNECTION DEVICES

(All units listed are 120/240 volt, single-phase, 3-wire meter-breaker combinations unless noted)

HORIZONTAL METER MODULES

INDOOR

125 amp/position

CRM-102 (2-position; meter above breakers)

CRM-103 (3-position; meter above breakers)

CRM-102B (2-position; meter below breakers)

CRM-103B (3-position; meter below breakers)

The above units have a horizontal bus rating of 350 amps.

These units may also be used on 120/208 volt single-phase, 3-wire services with the addition of a fifth jaw (Cat. No. CRM5J) installed in the 9 o'clock position

ERICKSON

METER CONNECTION DEVICES

(All units listed are meter-breaker combinations unless noted)

SINGLE PHASE RESIDENTIAL METERING PANELBOARDS INDOOR/OUTDOOR

200 amp/position (120/240 volt, 1-phase, 3-wire)

1RM84-1 (1-position)
1RM84-2 (2-position vertical)
1RM84-3 (3-position vertical)
1RM84-4 (4-position vertical)

200 amp/position (120/208 volt, 3-phase, 4-wire wye for use with single phase meters)

3RM84-1 (1-position)
3RM84-2 (2-position vertical)
3RM84-3 (3-position vertical)
3RM84-4 (4-position vertical)

POLYPHASE COMMERCIAL METERING PANELBOARDS INDOOR/OUTDOOR

200 amp/position (120/208 volt, 3-phase, 4-wire wye for use with single phase meters)

CM84-1 (1-position)
CM84-2 (2-position vertical)
CM84-3 (3-position vertical)
CM84-4 (4-position vertical)

200 amp/position (120/208 volt 3-ph., 4-wire, wye; (120/240 volt 3-ph., 4-wire Delta)

CM87-1 (1-position)
CM87-2 (2-position vertical)
CM87-3 (3-position vertical)
CM87-4 (4-position vertical)

400 – 800 amp/position

(120/140 volt, 1-phase, 3-wire)
(120/208 volt 3-phase, 4-wire, wye)
(120/240 volt 3-phase, 4-wire, delta)
(120/240 volt 3-phase, 4-wire, delta)
(277/480 volt 3-phase, 4-wire, wye)

POLYPHASE COMMERCIAL METERING PANELBOARDS (continued) INDOOR/OUTDOOR

200 amp/position (277/480 volt 3-ph., 4-wire, wye)

6CM87-1 (1-position)
6CM87-2 (2-position vertical)
6CM87-3 (3-position vertical)
6CM87-4 (4-position vertical)

POLYPHASE MODULAR METERING UNITS INDOOR SWITCHBOARD TYPE (Note 4)

200 amp/position (120/240 volt 3-ph., 4-wire, delta; 120/208 volt 3-ph., 4-wire, wye; 277/480 volt 3-ph., 4-wire, wye)

WMS Series (Single socket unit with fusible switch)
WMP Series (Single socket unit with fusible pullout)
WMCB Series (Single socket unit with breaker)
WMPT Series (Twin socket unit with fusible)
WMCBT Series (Twin socket unit with breakers)
MK7-91 Series (Single socket unit with switch
or breaker).(Note 6)

Metering Transformer Compartment Indoor Switchboard Type

400-800 amp WCT series

POLYPHASE COMMERCIAL METERING PANELBOARDS HORIZONTAL GANGED SOCKETS INDOOR/OUTDOOR (Note 4)

200 amp/position
(480 volt, 3-phase, 3-wire delta;
(277/480 volt 3-ph., 4-wire, wye)
SMCB Series (Single socket unit with breaker)
SMP Series (Single socket unit with fusible pullout)

ERICKSON (Continued)

METER CONNECTION DEVICES

(All units listed are meter-breaker combinations unless noted)

Metering transformer compartment with disconnect (breaker or switch)

“M” prefix indicates door mounted transformer rated meter fitting

CTA Series (C/T compartment at top)

CTB Series (C/T compartment at bottom)

The catalog numbers listed are provided with 1200-amp bus. When 8 in the catalog number is replaced by 7, 800-amp Main bus is provided. When 8 in the catalog number is replaced by 9, 1600-amp main bus is provided

GENERAL ELECTRIC COMPANY

METER CONNECTION DEVICES

(All units listed are 120/240 volt, single-phase, 3-wire meter-breaker combinations unless noted)

OVERHEAD OUTDOOR

743X2G12 (200 amp, socket only; no provision for breaker)

**METER MOD III VERTICAL MODULES
INDOOR/OUTDOOR**

125 amp/position

TMPR8212R-HB (2-position)
TMPR8312R-HB (3-position)
TMPR8412R-HB (4-position)
TMPR8512R-HB (5-position) (Note 4)

200 amp/position

TMPR8220R-HB (2-position)
TMPR8320R-HB (3-position)
TMPR8420R-HB (4-position)

(The above units can be used on 120/208 volt network services with the addition of a fifth jaw installed in the 9 o'clock position; Cat. No. of fifth jaw: TM5JU)

**MINI MOD III MODULAR METERING
ALL-IN-ONE-TYPE
INDOOR/OUTDOOR**

125 amp/position

TMMR2212R-HB (2-position vertical)
TMMR4312R-HB (3-position vertical)
TMMR4412R-HB (4-position vertical)
TMMR6512R-HB (5-position, 3-high)
TMMR6612R-HB (6-position, 3-high)

**MINI MOD III MODULAR METERING (cont.)
ALL-IN-ONE-TYPE**

INDOOR/OUTDOOR

200 amp/position

TMMR4220R-HB (2-position vertical)
TMMR6320R-HB (3-position vertical)
TMMR6520R-HB (5-position, 3-high)
TMMR6620R-HB (6-position, 3-high)

**METER MOD III POLYPHASE MODULES
INDOOR/OUTDOOR**

**200 amp/position (120/208 volt 3-ph., 4-wire, wye;
120/240 volt 3-ph., 4-wire, delta)**

TMPR312122R-HB (1-position)
TMPR312222R-HB (2-position vertical)
TMPR312322R-HB (3-position vertical)

Siemens

METER CONNECTION DEVICES

(All units listed are 120/240 volt, single-phase, 3-wire meter-breaker combinations unless noted)

VERTICAL METER MODULES INDOOR/OUTDOOR

125 amp/position (1 or 3ph In/1ph Out)

WMM2*125RB (2-position w/breaker)
WMM3*125RB (3-position w/breaker)
WMM4*125RB (4-position w/breaker)

200A/Position (1 or 3ph In/1ph Out)

WMM2*225RB (2-position w/breaker)
WMM3*225RB (3-position w/breaker)
WMM4*225RB (4-position w/breaker)
WMM5*225RB (5-position w/breaker)

***1 = 1 phase in/1phase out**

***2 = 3 phase in/1phase out.**

Change RB to RJB for 5th jaw

POLYPHASE

3phase in 3phase Out. Ringless. Lever Bypass

100A/Position

WML13100RJ (1-position w/breaker)
WML23100RJ (2-position w/breaker)
WML33100RJ (3-position w/breaker)

200A/Position

WML13225RJ (1-position w/breaker)
WML23225RJ (2-position w/breaker)
WML33225RJ (3-position w/breaker)

UNI-PACK METER CENTERS

125 amp/position

WP2211RJB (2-position, 200A Bus)
WP3311RJB (3-position, 300A Bus)
WP4411RJB (4-position, 400A Bus)
WP4511RJB (5-position, 400A Bus)
WP4611RJB (6-position, 400A Bus)
WP5411RJB (4-position, 500A Bus)
WP6511RJB (5-position, 600A Bus)
WP6611RJB (6-position, 600A Bus)

200 amp/position

WP4212RJB (2-position, 400A Bus)
WP4312RJB (3-position, 400A Bus)
WP4412RJB (4-position, 400A Bus)
WP6412RJB (4-position, 600A Bus)
WP6512RJB (5-position, 600A Bus)
WP6612RJB (6-position, 600A Bus)
WP8612RJB (6-position, 800A Bus)
WP10612RJB (6-position, 1000A Bus)

Siemens* (Continued)

METER CONNECTION DEVICES

(All units listed are rated at 600 volts, and for use outdoors unless noted)

SINGLE PHASE OVERHEAD

UAT317-OPCH (200 amp)
48104-02CH (320 amp)

POLYPHASE OVERHEAD

40405-02CH (200 amp, 3-phase, 3-wire)
40407-02CH (200 amp, 3-phase, 4-wire)

Socket-breaker combinations
(120/240 volt, single-phase, 3-wire)
UAB111-OPCH (100 amp)
UAB317-OPCH (200 amp)

POLYPHASE UNDERGROUND

40405P-9CH (200 amp, 3-phase, 3-wire)
40407P-9CH (200 amp, 3-phase, 4-wire)

SINGLE PHASE UNDERGROUND

UAP317-PPCH (200 amp)
47604P-9CH (320 amp)
47604PB-9CH (320 amp)

TRANSFORMER RATED
INDOOR/OUTDOOR

Socket-breaker combinations
(120/240 volt, single-phase, 3-wire)
UAPB317 -PPCH (200 amp)

9807-0431 (1-phase, 3-wire) 9837-0430
9807-0432 (3-phase, 3-wire) 9837-0432
9807-0433 (3-phase, 4-wire) 9837-0433

SINGLE PHASE OVERHEAD
HORIZONTAL GANGED SOCKETS

100 amp/position

UA2311-OPCH (2-position)
UA3311-OPCH (3-position)
UA4311-OPCH (4-position)

200 amp/position

UA2717-YPCH (2-position)
UA3717-YPCH (3-position)
UA4719-YPCH (4-position)
UA5719-KPCH (5-position)
UA6719-KPCH (6-position)

* Landis & Gyr is owned by Siemens Energy & Automation. The meter connection devices listed above may be sold under the Siemens label. The individual Siemens devices will have the same catalog numbers as Landis & Gyr, but they will be preceded by an "S". For example: Landis & Gyr Cat. No. UAT317-OPCH would have a Siemens Cat. No. SUAT317-OPCH.

Siemens (Continued)

METER CONNECTION DEVICES

(All units listed are 120/240 volt, single-phase, 3-wire meter-breaker combinations unless noted)

OVERHEAD

40405-02CH (200 A)

100 AMPS

UA2311-0PCH (2-position)

UA3311-0PCH (3-position)

UA4311-0PCH (4-position)

200 AMPS

UA2717-YPCH (2-position)

UA3717-YPCH (3-position)

UA4719-YPCH (4-position)

UA5719-KPCH (5-position)

UA6719-KPCH (6-position)

UAT417-0PZ (ringless)

UAT417-XPQG

TEMP POWER PANEL (125 A, Ringless)

TLXXXH2M (Pad Mount)

TLXXXH2P (Pedestal, back to back)

TLXXXHB (Bottom feed)

TLXXXHM (Pad mount)

TLXXXHP (Pedestal)

TLXXXHT (Top Feed)

METER DEVICES COMPANY

METER CONNECTION DEVICES

(All units listed are rated at 600 volts)

TRANSFORMER RATED
INDOOR/OUTDOOR

602U3010A6-166 (Single-phase, 3-wire)

602U3010A8-165 (3-phase, 3-wire)

602U3010A13-160 (3-phase, 4-wire)

MIDWEST ELECTRIC PRODUCTS

METER CONNECTION DEVICES

(All units listed are rated at 600 volts, and for use outdoors unless noted)

SINGLE PHASE OVERHEAD

1007672MEP (320 amp)
1007665-MEP (200 amp)
1007665AMEP (200 amp)
MEPKR1CS1BT (200 amp)
R2502CP6 (200 amp w/breakers)

POLYPHASE OVERHEAD

1007670-MEP (200 amp, 3-phase, 4-wire)

SINGLE PHASE UNDERGROUND

R400P6034 (400 amp)
R2502CP6 (200 amp w/breakers)
1007665-MEP (200 amp)
1007665AMEP (200 amp)

SINGLE PHASE UNDERGROUND

TRAILER PEDESTAL

Socket-breaker combination

(120/240 volt, single-phase, 3-wire)
1011692MEP (200 amp)

MILBANK

METER CONNECTION DEVICES

(All units listed are rated at 600 volts, and for outdoor use unless noted)

SINGLE PHASE OVERHEAD

U8949-RL-TG-KK (200 amp)
U4363-X-QG CECHA(320 amp)

Socket-breaker combinations

(120/240 volt, single phase, 3-wire)
U7375-RL-KK (100 amp)
U7607-RL-200-KK (200amp)
U5842-RL-KK-CECHA (5th Term Option)
U5842-RL-100-KK (5th Term Option)
U5842-RL-125-KK (5th Term Option)
U5842-RL-200-KK (5th Term Option)

SINGLE PHASE UNDERGROUND

U8436-O (200 amp)
U8436-O-HP (200 amp-long raceway)

U8303-O (2-pos. vertical; 200 amp/pos.)
U1748-O (320 amp)

Socket-breaker combinations

(120/240 volt, single-phase, 3-wire)
NU8980-O-KK (200 amp)
U6689-O-200-KK-CECHA (200 amp)
U3849-O-2/200 (320 amp with 2-200 amp
circuit breakers)
U5706-0-200S (200 amp)

SINGLE PHASE OVERHEAD HORIZONTAL GANGED SOCKETS (120/240 volt, single-phase, 3-wire)

100 amp/position

L572-XL-KK (2-position)
L573-XL-KK (3-position)
L574-XL-KK (4-position)
L575-XL-KK (5-position)
L576-XL-KK (6-position)

200 amp/position

U1252-X-KK-K1-PED (2-position)
U1253-X-KK-K3-PED (3-position)
U1254-X-KK-K3-PED (4-position)
U1255-X-KK-K4-PED (5-position)
U1256-X-KK-PED (6-position)

SINGLE PHASE UNDERGROUND CONDOMINIUM METER UNITS (120/240 volt, single-phase, 3-wire)

125 amp/position

U2852-X-PED-KK (2-position vertical)
U2853-X-PED-KK (3-position vertical)
U2854-X-PED-KK (4-position, 2-high)
U2855-X-PED-KK (5-position, 3-high)
U2856-X-PED-KK (6-position, 3-high)

U5902-X (2 position)
U5903-X (3 position)
U5904-X (4 position)
U5905-X (5 position)
U5906-X (6 position)

200 amp/position

U2862-X-PED-KK (2-position vertical)
U2863-X-PED-KK (3-position vertical)

U2864-X-PED-KK (4-position, 2-high)
U2865-X-PED-KK (5-position, 3-high)
U2866-X-PED-KK (6-position, 3-high)
U5882-X (2 position)
U5883-X (3 position)
U5884-X (4 position)
U5885-X (5 position)
U5886-X (6 position)

(The above condominium units are used
With the S2291-TO raceway)

POLYPHASE OVERHEAD

U8624-R-XL (200 amp, 3-phase, 3-wire)

U8606-R-XL (200 amp, 3-phase, 4-wire)
U5750-RXL-200-BL 3Phase 4 wire 200A

POLYPHASE UNDERGROUND

U9108-O (200 amp, 3-phase, 3-wire)
U9107-O (200 amp, 3-phase, 4-wire)

POLYPHASE OVERHEAD/UNDERGROUND

200 amp/position (3-phase, 4-wire)

U2732-XT-PED (2-position horizontal)
U2733-XT-PED (3-position horizontal)
U2734-XT-PED (4-position horizontal)
U2735-XT-PED (5-position horizontal)
U2736-XT-PED (6-position horizontal)

(For underground service to the above units,
use the S2291-TO raceway)

MILBANK (Continued)

METER CONNECTION DEVICES

SINGLE PHASE w/breakers

OVERHEAD/UNDERGROUND

U5168-XTL-100-KK w/8 circuits
U5168-XTL-150-KK w/8 circuits
U5168-XTL-200-KK w/8 circuits
U5268-XTL-150-KK w/20 circuits
U5268-XTL-200-KK w/20 circuits

TRANSFORMER RATED

INDOOR/OUTDOOR

CE136 (Single-phase, 3-wire)
CE138 (3-phase, 3-wire)
CE1313 (3-phase, 4-wire)

Commercial

Single Phase Pedestal

CP3B91 (100 amp)
CP3B51 (100 amp) w/by-pass lever
CP3B52 (200 amp)
CP3B54 (400 amp)

Single Phase Underground Ped

UT4839 320A w/lever bypass 1 pos

POLYPHASE Dual-Fitting C138 and CE1313

U6330-CECHA (T/S Enclosure, No-bypass, 20A/FRT rated, ringless, 8 Term, CE138)
U6331-CECHA (T/S Enclosure, No-bypass, 20A/FRT rated, ringless, 13 Term, CE1313)

MURRAY ELECTRICAL PRODUCTS

(MP=MURRY ~ SP = SIEMENS)

METER CONNECTION DEVICES

(All units listed are 120/240 volt, single-phase, 3-wire meter-breaker combinations unless noted)

OVERHEAD

OUTDOOR

RS192AX (200 amp) *

UNDERGROUND

OUTDOOR

RP118AW (200 amp) *

OVERHEAD

HORIZONTAL GANGED SOCKETS

INDOOR/OUTDOOR

125 amp/position

RN291AR (2-position) *

RN391AR (3-position) *

RN491AR (4-position) *

VERTICAL METER MODULES

INDOOR/OUTDOOR

125 amp/position

DC331W (3-position)

DC431W (4-position)

200 amp/position

DC332W (3-position)

125 amp/position (120/208 volt 3-phase,

4-wire wye for use with single-phase meters)

DC341W (3-position)

DC441W (4-position)

200 amp/position (120/208 volt 3-phase,

4-wire wye for use with single-phase meters)

DC342W (3-position)

DC442W (4-position)

MP2211RJB (125 amp) *

MP4411RJB (125 amp) *

MP4212RJB (125 amp) *

MP4312RJB (200 amp) *

MP4412RJB (200 amp) *

MP4511R5B (125 amp) 5p 3 high *

MP4611R5B (125 amp) 6p 3 high *

MP6611R5B (125 amp) 6p 3 high *

MP6512R5B (125 amp) 5p 3 high *

MP6612R5B (125 amp) 6p 3 high *

* Meter sockets only; no provision for breaker.

UNIPACK METER CENTERS

ALL-IN-ONE-TYPE

INDOOR/OUTDOOR

125 amp/position

UM229RCR (2-position vertical)

UM329RCR (3-position, 2-high)

UM449RCR (4-position, 2-high)

UM569RCR (5-position, 3-high)

UM669RCR (6-position, 3-high)

200 amp/position

UM247RCR (2-position vertical)

UM347RCR (3-position, 2-high)

UM447RCR (4-position, 2-high)

UM447RCR (4-position, 2-high)

UM567RCR (5-position, 3-high)

UM667RCR (6-position, 3-high)

POLYPHASE OVERHEAD (Rated at 600 volts)

OUTDOOR

CE205U (200 amp, 3-phase, 3-wire) *

CE207U (200 amp, 3-phase, 4-wire) *

POLYPHASE METER MODULES

INDOOR/OUTDOOR

125 amp/position (120/208 volt 3-ph., 4-wire, wye;

120/240 volt 3-ph., 4-wire, delta)

DL141W7 (1-position)

DL241W7 (2-position vertical)

DL341W7 (3-position vertical)

200 amp/position (120/208 volt 3-ph., 4-wire, wye;

120/240 volt 3-ph., 4-wire, delta)

DL142W7 (1-position)

DL242W7 (2-position vertical)

DL342W7 (3-position vertical)

RONK ELECTRICAL INDUSTRIES

METER CONNECTION DEVICES

(All units listed are rated at 240 volts)

MSB200HA-OH (200 amp, w/circuit breaker)
MSB200HA-UG (200 amp, w/circuit breaker)
MSB200HF-OH (200 amp, w/circuit breaker)
MSB200HF-UG (200 amp, w/circuit breaker)
MSB320LE-UG (320 amp, w/dual circuit breakers)
7215MSH-UG-CE (200 amp, w/disconnect switch)

SQUARE D COMPANY

METER CONNECTION DEVICES

(All units listed are 120/240 volt, single-phase, 3-wire meter-breaker combinations unless noted)

EZ METER PAK METER CENTERS VERTICAL MODULES INDOOR/OUTDOOR

125 amp/position

EZMH113125 (3-position)
EZMH114125 (4-position)
EZMH115125 (5-position) (Note 4)

200 amp/position

EZML111200 (1-position) 111225
EZML112200 (2-position) 112225
EZML113200 (3-position) 113225
1009265 (2-position)

125 amp/position (120/208 volt, 3-phase, 4-wire wye for use with single-phase meters)

EZMH313125 (3-position)
EZMH314125 (4-position)
EZMH315125 (5-position) (Note 4)

200 amp/position (120/208 volt, 3-phase, 4-wire wye for use with single-phase meters)

EZML312200 (2-position) 225
EZML313200 (3-position) 225
EZM314225 (4-position)

SINGLE PHASE OVERHEAD

1007665-SQD (200 amp)
1007662-SQD (320 amp)
1009079-SQD
UAT417-XPQ6 (200 amp)

SINGLE PHASE UNDERGROUND

1006388-SQD (200 amp)

MP METER PAK METER CENTERS ALL-IN-ONE-TYPE INDOOR/OUTDOOR

125 amp/position

MPH22125 (2-position vertical)
MPH33125 (3-position vertical)
MPH44125 (4-position vertical)
MPH55125 (5-position, 3-high)
MPH66125 (6-position, 3-high)

POLYPHASE EZ METER PAK METER CENTERS INDOOR/OUTDOOR

200 amp/position (120/208 volt 3-ph., 4-wire, wye;

120/240 volt 3-ph., 4-wire, delta)

EZML331200 (1-position) 331225
EZML332200 (2-position vertical) 332225
EZML333200 (3-position vertical) 333225

POWER STYLE

COMMERCIAL MULTIPLE METERING INDOOR SWITCHBOARD TYPE

**200 amp/position (120/208 volt 3-ph., 4-wire, wye;
277/480 volt 3-ph., 4-wire, wye)**
CMM Type (Note 5)

POLYPHASE OVERHEAD

1007666-SQD (200 amp, 3-phase, 3-wire)
1007670-SQD (200 amp, 3-phase, 4-wire)

SWITCHBOARD APPARATUS CO.

METER CONNECTION DEVICES

(All units listed are meter-breaker combinations)

**SINGLE PHASE OVERHEAD
OUTDOOR**
(120/240 volt, single-phase, 3-wire)

MSPNLBD (320 amp)
U4501-11 (320 amp)

**The above units are designed for
stationary and mobile trailers.**

**POLYPHASE MODULAR METERING UNITS
INDOOR SWITCHBOARD TYPE (Note 4)**

200 amp/position (120/208 volt, 3-phase, 4-wire wye)
TMM3203 (Single unit with 100 amp fuse or breaker)
TMM3204 (Single unit with 200 amp fuse or breaker)
TMM3233 (Twin unit with 2-100 amp fuses or breakers)
TMM3234 (Twin unit with 1-100 amp and 1-200 fuses
or breakers)
TMM3244 (Twin unit with 2-200 amp fuses or breakers)

200 amp/position (277/480 volt, 3-phase, 4-wire wye)
TMM3603 (Single unit with 100 amp fuse or breaker)
TMM3604 (Single unit with 200 amp fuse or breaker)
TMM3633 (Twin unit with 2-100 amp fuses or breakers)
TMM3634 (Twin unit with 1-100 amp and 1-200 fuses
or breakers)
TMM3644 (Twin unit with 2-200 amp fuses or breakers)

THOMAS & BETTS *

METER CONNECTION DEVICES

(All units listed are 120/240 volt, single-phase, 3-wire meter-breaker combinations unless noted)

MM VERTICAL METER MODULES INDOOR/OUTDOOR

125 amp/position

MM312RRL-TB (3-position)
MM412RRL-TB (4-position)

200 amp/position

MM320RRL-TB (3-position)
MM420RRL-TB (4-position)

125 amp/position (120/208 volt, 3-phase, 4-wire wye for use with single-phase meter

M3M312RRL-TB (3-position)
M3M412RABRL-TB (4-position)
M3M412RBCRL-TB (4-position)
M3M412RACRL-TB (4-position)

200 amp/position (120/208 volt, 3-phase, 4-wire wye for use with single-phase meter

M3M320RRL-TB (3-position)

MP METER PACK UNITS (continued) ALL-IN-ONE-TYPE INDOOR/OUTDOOR

125 amp/position

MP2122RRL-TB (2-position vertical)
MP3124RRL-TB (3-position, 2-high)
MP4124RRL-TB (4-position, 2-high)
MP5126RRL-TB (5-position, 3-high)
MP6126RRL-TB (6-position, 3-high)

POLYPHASE METER MODULES INDOOR/OUTDOOR

200 amp/position (120/208 volt, 3-phase, 4-wire wye for use with single-phase meters)

M35M220RAB-TB (2-position vertical)
M35M320R-TB (3-position vertical)

200 amp/position (120/208 volt 3-ph., 4-wire, wye; 120/240 volt 3-ph., 4-wire, delta

M37M120R-TB (1-position)
M37M220R-TB (2-position vertical)
M37M320R-TB (3-position vertical)

* Thomas & Betts is currently redesigning their entire line of modular metering equipment. The Catalog Numbers listed above are for the units that had been approved, but they are no longer being manufactured. If any of the above units are installed on new projects, contact System Meter for instructions.

TRANSFORMER RATED METER CONNECTION DEVICES

CROSS REFERENCE LIST

- Note: For applicable metering/CT-cabinet requirements and guidelines, please refer to C9140 and C9141 in “Service and Metering Requirements” handbook.

- [service and meter requirements.pdf \(comed.com\)](#)

I. SINGLE-PHASE, 3-WIRE; 6-Terminal Socket (120/240 volt, 240/480 volt & Primary) **(Note 3)**

<u>Manufacturer</u>	<u>Catalog No.</u>
Anchor	RTSS6-63W-CH
Siemens	9807-8431, 9837-0430
Meter Devices Co.	602U3010A6-166
Milbank	CE136

II. THREE-PHASE, 3-WIRE; 8-Terminal Socket (480 volt & Primary) **(Note 3)**

<u>Manufacturer</u>	<u>Catalog No.</u>
Anchor	RTSS8-73W-CH
Siemens	9807-8432/9837-0433
Meter Devices Co.	602U3010A8-165
Milbank	CE138

III. THREE-PHASE, 4-WIRE; 13-Terminal Socket (120/208 volt, 277/480 volt & Primary) **(Note 3)**

<u>Manufacturer</u>	<u>Catalog No.</u>
Anchor	RTSS13-13W-CH
Siemens	9807-8433
Meter Devices Co.	602U3010A13-160
Milbank	CE1313

- Notes: 1) All meter connection devices must have CECHA stamp.
2) All meter connection devices must have ringless covers.
3) The “Primary” listing indicates voltages greater than 600 volts.
4) The transformer rated devices listed above have maximum ratings of 600 volts and 20amps.

APPROVED CURRENT TRANSFORMER COMPARTMENTS

AMP	400A	3PH 4W	ACCT4-4TM
Electric	600A	3PH 4W	ACCT6-4TM
Company	800A	3PH 4W	ACCT8-4TM
Chicago	400A	1PH 3W	CT4001MF
Switchboard	400A	3PH 3W	CT4003MF
	400A	3PH 4W	CT4004MF
	600A	1PH 3W	CT6001MF
	600A	3PH 3W	CT6003MF
	600A	3PH 4W	CT6004MF
	800A	1PH 3W	CT8001MF
	800A	3PH 3W	CT8003MF
	800A	3PH 4W	CT8004MF
	1200A	3PH 4W	CT12001MF
	1600A	3PH 4W	CT16001MF
	2000A	3PH 4W	CT20001MF
ERICKSON	400A	3PH 4W	1182-5
		3PH 3W	1182-4
		1PH 3W	1182-3
	600 - 800A	3PH 4W	283-5
		3PH 3W	283-4
		1PH 3W	283-3
	1200A	3PH 4W	CT124MF
		3PH 3W	CT123MF
		1PH 3W	CT121MF
	1600A	3PH 4W	CT164MF
		3PH 3W	CT163MF
		1PH 3W	CT162MF
	2000A	3PH 4W	CT204MF
		3PH 3W	CT203MF
		1PH 3W	CT201MF
	2500A	3PH 4W	CT254MF
		3PH 3W	CT253MF
		1PH 3W	*
	3000A	3PH 4W	CT304MF
	4000A	3PH 4W	CT404MF
GALVA	400A	3PH 4W	CE-404-13
	600A	3PH 4W	CE-604-13
	800A	3PH 4W	CE-804-13

APPROVED CURRENT TRANSFORMER COMPARTMENTS cont'd

KINNEY	400A	3PH 4W	CTMF4034
	600A	3PH 4W	CTMF6034
	800A	3PH 4W	CTMF8034
	1200A	3PH 4W	184537
	1600A	3PH 4W	*
	2000A	3PH 4W	*
Power	1200A	3PH 4W	12034A
Distribution	1600A	3PH 4W	12101A
Equipment	2000A	3PH 4W	13122
	2500A	3PH 4W	2503
	4000A	3PH 4W	150318
SQUARED	1200A	3PH 4W	80246665R1
	1600A	3PH 4W	*
	2000A	3PH 4W	*
	4000A	3PH 4W	*
WESTING	1200A	3PH 4W	6659C37
	1600A	3PH 4W	*
	2000A	3PH 4W	*
	2500A	3PH 4W	*
	4000A	3PH 4W	*

NOTE * Vendor uses (1) drawing to illustrate multiple switch sizes.

**METER SOCKET MANUFACTURERS AND LOCAL
REPRESENTATIVES**

- | | |
|---|---|
| 1. Anchor Electric
(Division of Thomas & Betts Corp.)

8155 T&B Boulevard
Memphis , TN 38125
(800) 888-0211 | Joe Carroll - Product Manager
(800) 888-0211 Ext. 13669

<u>Local Representative</u>
Ed Kaestner
Ed Howard & Associates
1550 Higgins Road, Suite 131
Elk Grove Village, IL 60007
(847) 593-1400
(800) 782-5809 |
| 2. Chicago Switchboard Co. Inc.

470 W. Wrightwood Ave.
Elmhurst, IL 60126
(630) 833-2266
www.chiswbd.com | Bill Eder – Vice President; Sales
Sid Jhaveri – Sales Engineer |
| 3. Cutler Hammer

601 Oakmont Lane
Westmont, IL 60559
(630) 789-5900 | George Fiest - Sales Engineer
georgemfiest@eaton.com
(630) 240 - 3387 |
| 4. Durham Company

P.O. Box 908
Lebanon, MO 65536
(417) 532-7121 | Bob Taylor – OEM Sales Manager
btaylor@durhamcompany.com
Phone 417-533-3749 |
| 5. Electric City

1909 S. Busse Highway
Mount Prospect, IL 60056
(847) 228-7666 | |
| 6. PowerOne Corp.

1020 Cedart Ave, Suite 110
Saint Charles, IL 60174
(630) 443 – 6500 | Jim Chaggaris
(630) 669-2241 |

METER SOCKET MANUFACTURERS AND LOCAL REPS (Continued)

7. Erickson Electrical Equipment Co. Bruce Erickson – Product Engineer

475 Bonnie Lane
Elk Grove Village, IL 60007
(847) 640-7701

Local Representative
Hanke Co., Inc.
1860 Brummel Drive
Elk Grove Village, IL 60007
(847) 593-8500
Mark Franzen

8. General Electric Co. Al Heyne – Sales Engineer

2015 Spring Road
Oak Brook, IL 60521

(630) 573-3169
Shahid Sheikh
(630) 573-3468

10. Illinois Switchboard Co. Bill Zastawny

125 West Laura Drive
Addison, IL 60101
(630) 543-0910

Ed Zastawny

11. Industrial Switchboard Mfg. Co. Anis Rahman – Vice President

64 East 14th St.
Chicago, IL 60605
(312) 362-0330

METER SOCKET MANUFACTURERS AND LOCAL REPS (Continued)

13. Kinney Electrical Mfg. Co.

678 Buckeye St.
Elgin, IL 60120
(847) 742-9600

14. Landis & Gyr Utilities Services

(Division of Siemens Energy
& Automation, Inc.)

2800 Duncan Rd.
Lafayette, IN
(765) 742-1001
www.landisgyr.com/products

Local Representative

Fletcher-Reinhardt Co.
3105 Corporate Exchange Ct.
Bridgeton, MO 63044
(314) 506-0700
www.fr-electric.com

15. Brooks Utility Products

23847 Industrial Park Dr.
Farmington Hills, MI 48335-1197
(888) 687-3008
sales@brooksupg.com
(319)-321-1382

Phil Dudley – Director of Sales

Mark Martin – District Sales Manager
mmartin@brooksupg.com

16. Midwest Electric Products

41 Woodford Ave.
Plainville, CT 06062
(866) 685-0577

Local Representative

Lake Michigan Sales, LLC
500 Oakwood Road
Lake Zurich, IL 60047
(847) 651-4975
Dave Selsky
dselsky@lakemichigansales.com
888-308-7574

17. Milbank Mfg. Co.

Callas/Kingsley Electrical Sales
845 Lively Blvd.
Wood Dale, IL 60191
(630) 595-7887
brian@ckelectricalsales.com

Bruce Nailor

Regional Sales Manager

Tom Harmon
tharmon@milbankworks.com

METER SOCKET MANUFACTURERS AND LOCAL REPS (Continued)

- 18. Peterson Electric Panel Mfg. Co.** Rick Todd Jr. – Vice President
rrtodd@petersonpanel.com
5550 McDermott Dr.
Berkeley, IL 60163
(708) 449-2270
- 19. Siemens Industry Inc. (Talon, and Murray Electrical Products)** Product Application Manager
Phil Brooks
Area Business Development Manager 630-527-8589
phillipbrooks@siemens.com
- 20. Square D Company**
3050 Finley Rd.
Downers Grove, IL 60515
(847) 273-2088
- 21. Switchboard Apparatus Co.** Dale Hoppensteadt
Kevin Hoppensteadt
Sales4@sai-aps.com
2820 South 19th Ave.
Broadview, IL 60153
(708) 450-0990
- 22. Thomas & Betts Corp.** Tom Scott – Sales Representative
(630) 894-2010
Andy Rausch - Sales Representative
(630) 416-8121
113 Fairfield Way, Suite #207
Bloomington, IL 60108
- 23. Ronk Electrical.** Brian Rooney
brian@ckelectricalsales.com
Sales: 1-800-221-7665
Glen Schwass
schwass@ronkelectrical.com,
Sales@Ronkelectrical.com