

Delmarva Power is committed to safely delivering reliable, affordable and sustainable energy service. Given the growing threats from extreme weather and powerful storms, we are making strategic upgrades to strengthen and modernize our energy infrastructure in the area, making it smarter and stronger and providing more reliable service.

Why It's Important



Improves reliability for the more than 3,100 Delmarva Power customers, reducing the frequency and duration of outages.



Strengthens the local electric grid through system redundancy.



Modernizes critical infrastructure in Sussex County, Del., increasing its resiliency and longevity.



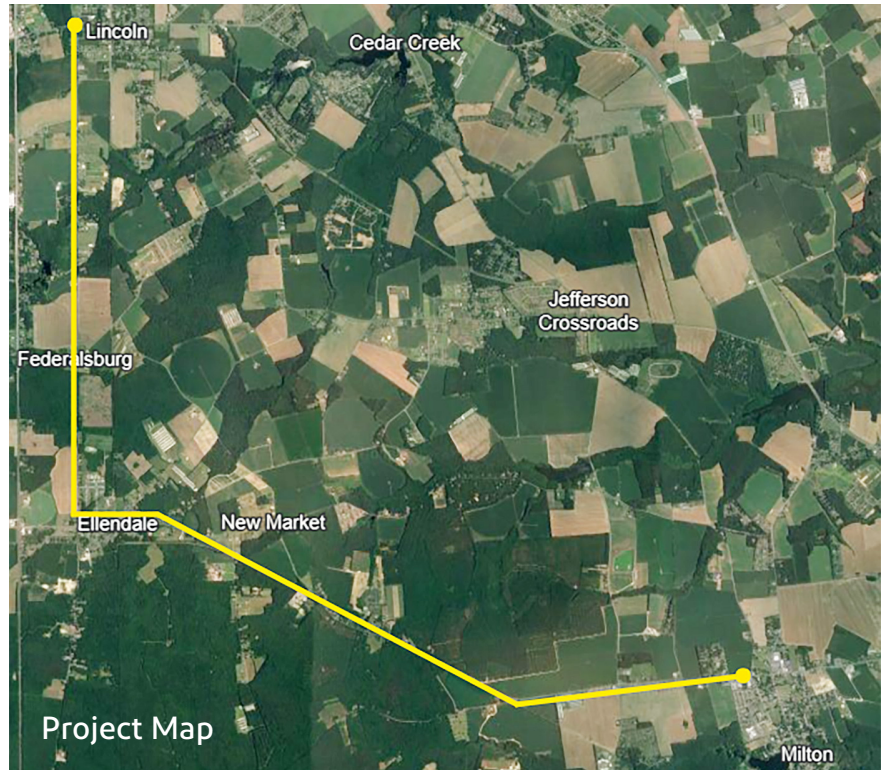
What You Need to Know

- Safety for our customers, communities and employees is our top priority.
- Rebuilding nearly six miles of our distribution system in the Ellendale, Lincoln, Milford and Milton areas.
- Constructing a new, five-mile distribution line providing redundant (backup) electrical feeds for the communities of Ellendale and Milton to help ensure service reliability for area customers. This work includes a combination of overhead and underground construction techniques.
- This will include work along parts of Old State Road, Route 16 (Milton-Ellendale Highway) and Mulberry Street in Milton.
- Construction is expected to begin in spring 2024 and be completed by early 2025.
- We will work closely with you to minimize potential impacts to you, your family and the community.
- We are committed to responding quickly to your questions. Please email jim.a.smith2@delmarva.com with any questions you may have.

Distribution Line Details

We will construct a new, five-mile distribution line to connect the Ellendale and Milton communities in Sussex County, Del., creating a system redundancy to electrically interconnect the towns and help reduce the duration and frequency of power outages. Currently, Ellendale and Milton are served by single sources from separate locations. Due to the current configuration of Delmarva Power's electrical distribution system, a loss of the dedicated feed to either town results in a loss of power for its entire community.

We will also rebuild nearly six miles of our distribution system in the Ellendale, Lincoln, Milford and Milton areas. We have performed regular maintenance to the line over the decades; however, this project is essential to continue meeting the ongoing energy needs of the area.



About the Construction Process

Safety for our customers, communities and employees is our top priority. We are committed to minimizing impacts to the local community throughout the design and construction of the project.

Construction is expected to begin in spring 2024 and be completed by early 2025. We will continue to keep the community informed throughout the entire construction process. We will perform all work within the times identified in the construction permits and keep noise levels from construction activities within established thresholds. We will also restore all areas affected by construction.

If you have any questions or concerns related to the project, please do not approach field crews on site. Instead, email jim.a.smith2@delmarva.com with any questions or comments.

Enhancing Reliability Across the Region

In 2023, our electric customers in Delaware experienced the lowest frequency of electric outages, on average, in the company's history. The frequency of outages has improved by more than 35 percent over the past 10 years, a result of our ongoing efforts to reinforce and modernize the local energy grid, adding new technology and smart devices, and targeted projects to increase resiliency.

Visit delmarva.com/Reliability to learn more.