

WHY WINDOW NATION?

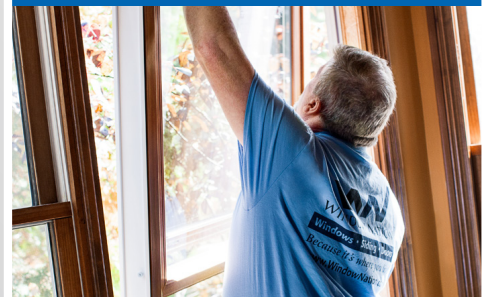
OVER 2,000,000 WINDOWS INSTALLED IN MORE THAN 200,000 HOMES

ATTENTION TO DETAIL



- Detailed quality audits every hour on every manufacturing line
- 20-point installation review
- 96% customer satisfaction on clean up and safety
- Custom windows measured to the tightest tolerance in the industry
- Over 2 million windows installed with 96% requiring no follow up service

QUALITY



- Window Nation uses America's only integrated system of window installation materials, insulation, sealant, and caulking
- OSI Quad Foam
- OSI Quad Max exterior sealant
- Ultra-premium, high-performance exterior trim coil
- Concrobium mold spray treatment

EXPERIENCE



- Installation crew leaders average more than 20,000 windows and over a decade experience
- Service technicians average 15 years of experience
- Over 2 million windows installed in over 200,000 homes
- 3rd largest window dealer in the country, ranked by Window and Door Market Magazine

PRODUCT SELECTION



- Over 1,500 custom window and door style combinations
- Name brand windows available
- Energy Star®-qualified products
- Windows engineered for the specific climate you live in

TRUST



- Angi™ Super Service award winner
- Limited Lifetime Warranty
- Exclusive 30-Day Price Protection Guarantee
- Licensed, bonded, and insured

AT WINDOW NATION, WE KNOW REPLACEMENT WINDOWS

We're third-generation window replacement experts who have been lucky to provide homeowners replacement windows and doors for over fifteen years. We opened our first showroom in Maryland in 2006, quickly growing to serve homeowners in cities across the country – and we're not stopping there. We're grateful for every homeowner who has trusted us to upgrade their most important asset: their home.

We've learned a lot about home improvement over the years, but the most important thing we learned isn't about window replacement. We learned the home improvement industry isn't about offering the best windows and doors; it's about the relationships we build with our customers. Your home is your most important asset, and we don't take the opportunity to work with you lightly. There's nothing more important to us than providing high-quality windows, and doors to help you turn your house into your dream home.

Our team at Window Nation will go the extra mile to ensure your project goes smoothly. We pride ourselves on our attention to detail, and you can feel comfortable knowing you're working with one of the most experienced, detail-oriented teams in the industry. Our team undergoes hours of ongoing training and education on the latest technology, products, and techniques to ensure our company exceeds your expectations.

Our goal at Window Nation is to help our customers find the perfect windows and doors for their home. We want our customers to feel good about their decision to work with our company, and our team will go above and beyond to ensure you have the best possible experience. Our exterior design consultants are specially trained in the best practices in window replacement, helping you find the perfect fit for your home and wallet. We offer a variety of window styles, custom-made to fit your home's unique needs. When you choose replacement windows from Window Nation, you'll enjoy a curb appeal boost while keeping your home comfortable no matter the season.

There are many home improvement companies eager for your business, and we're honored you're considering Window Nation for your project. We don't take your decision to work with our team lightly, and we look forward to helping you find the perfect windows and doors for your home.



WINDOW NATION CURRENTLY SERVES THE FOLLOWING AREAS:

Colorado • Connecticut • Delaware • Georgia • Illinois • Indiana • Kansas • Kentucky • Maryland • Massachusetts • Minnesota • Missouri • New Hampshire • New Jersey • North Carolina • Ohio • Oregon • Pennsylvania • Rhode Island • Tennessee • Texas • Virginia • Washington • Wisconsin

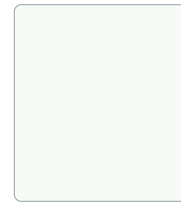
866-446-2846
WindowNation.com



SPECTRAVIEW

SPECTRAVIEW

INTERIOR COLORS



White Vinyl

EXTERIOR COLORS



Black Cranberry Bronze Ivory



Dark Bronze Wedgewood Blue Forest Green

Interior/Exterior finish also available in Matte Black

GRID TYPE

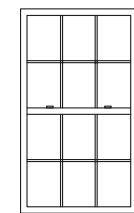


Grids between glass (GBG)

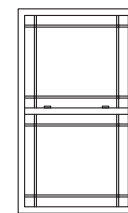


Simulated divided lites (SDL)

GRID STYLES



Colonial



Prairie

Custom grid configurations, plus oriel and cottage sash options available. Grid pattern availability and appearance is based on window size and shape.

SPECTRAVIEW IS ALSO AVAILABLE IN SLIDING WINDOWS, CASEMENT AND AWNING WINDOWS, PICTURE WINDOWS, BAY AND BOW WINDOWS, GARDEN WINDOWS, HOPPERS, AND SLIDING DOORS.



Sliders come in 2- and 3-lite models. 3-lite sliders have a center fixed panel and are available in configurations of 1/3-1/3-1/3 and 1/4-1/2-1/4 .



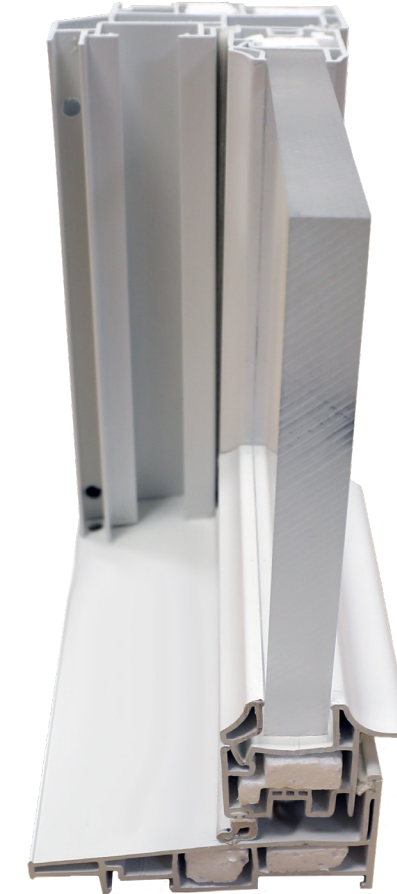
Casements have a unique hinged design that allows for easy cleaning from the inside of your home.



Patio doors are built strong, including a heavy-duty metal reinforcement and an extruded aluminum screen door frame, while still remaining aesthetically appealing.

PROVIDING AFFORDABILITY, STRUCTURAL INTEGRITY, AND PLEASING AESTHETICS

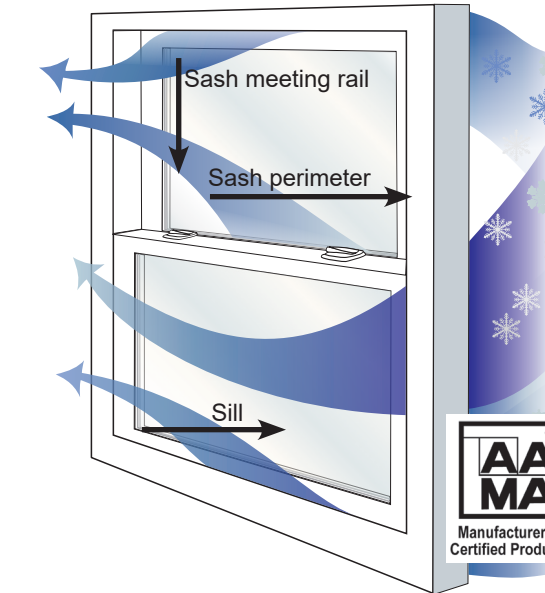
- World-class assembly**
Consistent fabrication quality from window to window. Fusion-welded sashes and frame are built squarely.
- Wet-glazed process**
Secures glass in sash for a tight seal and delivers industry-leading air infiltration rates.
- H-LC35 performance**
High structural rated performance without a sill rise extender, improving clear opening.
- Wool-pile weatherstripping**
Protects around the perimeter of all sashes to fight air infiltration.
- Foam-filled sash and frame**
Increases thermal performance and energy efficiency
- Interlock system**
Interlock at sash meeting rails creates a super-tight seal against air infiltration, providing security, comfort and well being.
- Tilt-in sash system**
Dual operating tilt-in sashes make cleaning safe and easy from inside the home.
- Dual vent latches**
When deployed, limit sash travel, allowing for a secure way to keep windows open for ventilation.
- Block and tackle balance system**
Ensures smooth operation that is reliable and quiet for years.
- Balance covers**
Give the window a more attractive and finished appearance.
- Stainless steel spacer system**
 - Corrosion-resistant - will not rust
 - Temperature resistant - maintains a strong, secure seal through temperature changes
 - Strength and durability - stronger than tin and aluminum spacers
 - Warm-edge technology - less conductive than typical aluminum and tin spacers for better energy efficiency
 - Grid alignment - perfect, machine-generated alignment



AIR INFILTRATION

Poorly designed windows don't have built-in airlocks, weatherstripping, and barriers necessary to keep air from forcing its way in, and leaky windows cause drafty homes. SPECTRAVIEW windows greatly minimize air leaks with numerous air barriers designed into our advanced sill design. The narrow manufacturing tolerances produce a tight window that prevents air infiltration.

AREAS OF AIR INFILTRATION



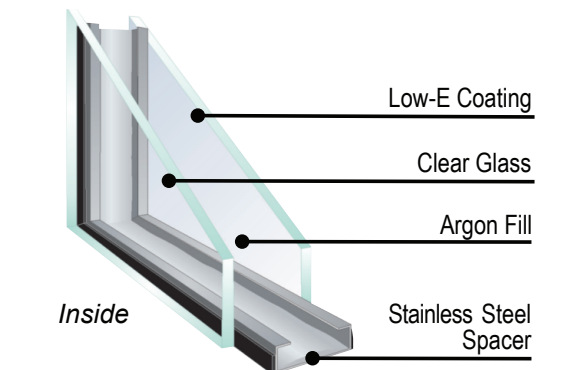
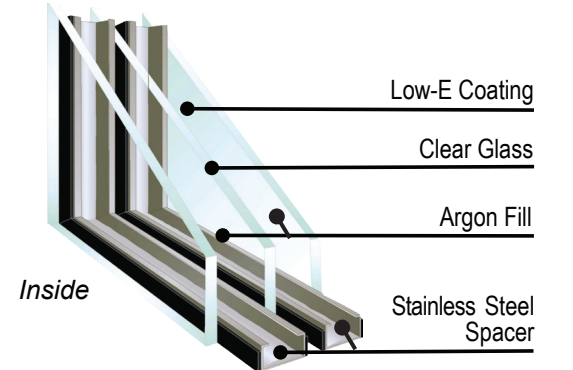
STRUCTURAL DATA	
Air:	0.01 cfm at 25 mph*
Structural:	DP 35

* Up to 80% better than industry minimum. 30cfm
** psf Pressure measurement = pounds per square foot (Lbs./ft²)
Test results vary by style and size of window. Size tested is 48x84

GLASS

SPECTRAVIEW window comes standard with one of our double-pane, high-performance Low-E glass systems with the stainless steel spacer system, which helps to dramatically improve the efficiency of your new windows.

LOW-E



WINDOWS ASSEMBLED IN THE USA

SPECTRAVIEW windows are manufactured in the USA and are designed and engineered specifically for our challenging Midwest and east coast climates. This weather is unlike any other in the country due to its hot, humid summers and brutally cold and snowy winters. Why purchase a window made for the entire country's average weather when you can invest in one designed for your unique climate? Other benefits of products include:

- No shipping costs
- Quicker turnaround
- Supports economy
- Quicker service for parts
- Windows specifically designed for our challenging climate

A LIFETIME OF PROTECTION

All Window Nation Products are manufactured by the recognized leader in product innovation with uncompromising quality control. From the day your windows are installed to the day you sell your home, our comprehensive non-prorated lifetime warranty is your assurance that your investment is protected. Additionally, your warranty is completely transferable to the next homeowner. Contact a Window Nation consultant for more information and a copy of the warranty.

REPUTATION BUILT ON DECADES OF EXPERIENCE

Window Nation, Inc. was started by the Magden brothers with the mission of offering an unsurpassed selection of premium name-brand products installed by highly skilled licensed professionals and guaranteed by the most comprehensive warranty in the industry. Window Nation is consistently listed nationally as a top 20 window retailer, offers an award-winning customer service experience, maintains the grades via third-party review sites, and continues to deliver a 96 percent customer satisfaction.



Dual-action locks allow you to lock or tilt open the window with a flip of the thumb. Double low-profile sash locks come in three different finishes - white, oil-rubbed bronze, and brushed nickel



Fusion-welded corners prevent air from passing through and boost structural support.



FlexScreen with a cutting-edge, PVC-coated, high-performance spring steel frame. Hides in the window screen pocket to improve sightlines.