

# GRANDVIEW

WINDOWS



WINDOW NATION

WINDOWS • SIDING • DOORS

# WHY WINDOW NATION?

OVER 2,000,000 WINDOWS INSTALLED IN MORE THAN 200,000 HOMES

## ATTENTION TO DETAIL



- 50 Point Factory Inspection
- 20 Point Installation Review
- 96% Customer Satisfaction On Clean Up And Safety
- Custom Windows Measured Three Times for Precision, Accuracy and a Tight Seal
- Over 2 Million Windows Installed Last Year With 96% Requiring No Follow Up Service

## QUALITY



Window Nation Uses America's Only Integrated System Of Window Installation Materials, Insulation, Sealant, And Caulking.

- OSI Quad Form
- OSI Quad Max Exterior Sealant
- Concrobium Mold Spray Treatment
- Ultra-Premium High Performance Exterior Trim Coil

## EXPERIENCE



- Installation Crew Leaders Average More Than 20,000 Windows & 10 Years Experience
- Service Technicians With An Average Of 15 Years' Experience
- Over 2 million Windows Installed In Over 200,000 Homes
- 3rd Largest Window Retailer In The Country, Ranked By Window and Door Market

## PRODUCT SELECTION



- Over 1,500 Custom Window & Door Style Combinations
- Energy Star Rated Products
- Windows Engineered For The Specific Climate We Live In

## TRUST



- Angie's List Super Service Award Winner
- Limited Lifetime Warranty
- Exclusive 30-Day Price Protection Guarantee
- Licensed, Bonded, And Insured



## The Window Nation Story

*At Window Nation, we are proud of the partnerships and affiliations that we have developed and the relationships that have cultivated over the years.*







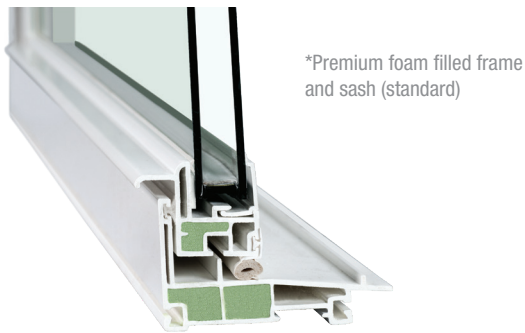
## Double Hung

*The modern design and durability of our Grand View windows gives you the advantage of easy, convenient cleaning. The tilt-in sashes of our double hung window make cleaning a breeze. Unique thermal construction and the highest quality materials reduce your heating and cooling bills.*



## DuraTex™ Spacer System

All IGUs are not created equal! Our versatile, flexible warm edge technology spacer system helps you save on your energy bills by:



\*Premium foam filled frame and sash (standard)

- Insulating frame and edge of glass up to 90% better than other spacer systems.
- Improving performance of gas-filled IGUs and Low-E glass.
- Reducing conductivity and total window U-value (heat transfer).
- Improving resistance to condensation.

## Premium Foam Insulation

Grand View exclusive insulation system increases the R-value-resistance to heat flow. Premium energy foam is standard in the frames and sashes of your Grand View windows.\*

## Stainless Steel Constant Force Balances



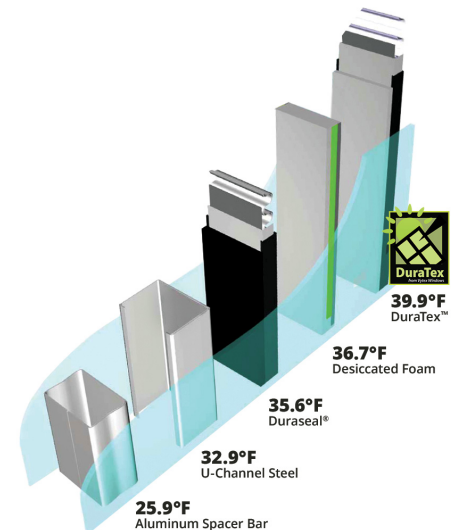
Constant Force balance system gives you fingertip window operation.



The Grand View window incorporates a unique hooded lock that completely covers the keeper for security and a clean appearance.

## High Performance & Dependability

The DuraTex™ spacer system dependably delivers high performance including excellent resistance to ozone, weathering, water and aging, while maintaining its flexibility through wide changes in temperature and barometric pressure.



## Envirosealed™ Technology

Grand View Envirosealed energy-efficient windows can lower energy bills and ensure a greener future for the planet. Envirosealed's DuraTex™ warm edge spacer technology offers:

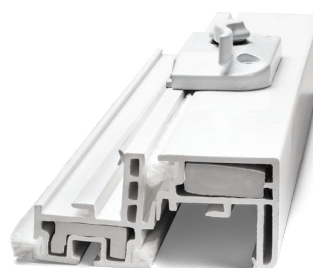
Reduced environmental impact—Improve the environment indoors and out by reducing greenhouse gas emissions.

Grand View windows are made with Envirosealed technology, the most energy-efficient spacer system as measured by the u-value and edge of glass temperatures.

Located between the glass panes, the DuraTex™ spacer provides for the warmest edge of glass temperature possible, saving you hundreds of dollars or more a year in energy costs.

Envirosealed Windows utilize encapsulated air chambers to achieve superior thermal performance, keeping homes warmer in the winter and cooler in the summer.

## ThermaCore reinforcement™



Grand View with ThermaCore Reinforcement performs

**533 X better than Aluminum**  
**160 X better than Steel**

Eliminates heat and cold transfer through the window.



## Double Hung— Window Specifications



*Premium™ Foam filled  
frame and sashes*

1. Premium Foam filled frames and sashes for greater insulating value.
2. Envirosealed Technology; DuraTex™ warm edge spacer system has been approved by LEED as a “Green” product.
3. DuraTex™ system reduces heat and cold transfer.
4. ThermaCore™ meeting rail reinforcement.
5. Triple fin weatherstripping at all sealing locations decreases air and water infiltration.
6. Special formula PVC never needs painting, makes cleaning a snap, and prevents scratching or denting.
7. Fusion welded sash and frame corners guarantee structural integrity.
8. Elegant, sculpted exterior for superior curbside appeal.
9. Custom designer sash profile closely resembles a real wood window sash.
10. Integral lift rail makes your window easy to open and close.
11. Integral interlock keeps windows closed tight for added security & weatherproofing.
12. Sloped sill allows easy water run-off and provides a sleek appearance.
13. Top and bottom sashes tilt in for easy cleaning.
14. Stainless Steel Constant Force balance system allows years of easy, carefree window operation.
15. Cam-type lock and keeper pulls and keeps your window sashes tightly together for a complete weather tight seal.
16. Integral tilt-latch makes the window easy to tilt in and leaves a smooth window appearance.
17. Deluxe limit lock provides added security while using the window for ventilation.
18. Full 3/4” sealed Insulated Glass Unit for increased insulating power.
19. Double Strength Glass Standard.
20. DP-45 rating – 164 mph wind load (170% stronger than industry minimum).
21. Air Infiltration Rating - 0.04 cfm

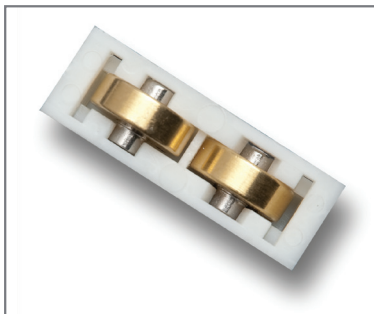
# Sliders

*Grand View Series two-lite slider windows open easily from both sides. Our sliders are engineered to operate smoothly time after time, year after year. Our three-lite slider windows give you a wide-open view and slide easily on brass rollers. They complement the decor of any style home.*



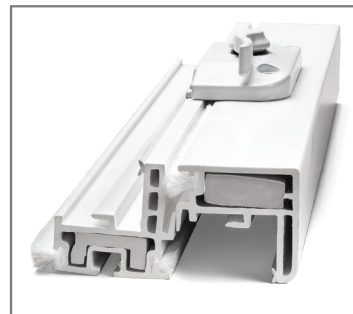
3-section slider

## Brass Rollers



Brass rollers allow effortless sash operation.

## Interlocking Sashes



Integral interlock keeps windows tightly closed for added security and weatherproofing.





## Slider—*Window Specifications*

Premium foam filled frames and sashes for greater insulating value.

Special formula PVC never needs painting, makes cleaning a snap, and prevents scratching or denting.

Fusion welded sash and frame corners means durability and dependability.

Left and right sashes lift out for easy cleaning.

Integral interlock keeps windows closed tight for added security and weatherproofing.

Triple weatherstripping at all sealing locations decreases air and water infiltration.

Brass rollers provide long-lasting, reliable operation.

Elegant, sculpted exterior for superior curbside appeal.

Full 3/4" sealed Insulated Glass Unit for increased insulating power.

Available in two-lite and three-lite configurations.

DP-45 rating—164 mph wind load (170% stronger than industry minimum).



# Casement & Awning

*Casements add character to the decor of your home. They're stylish and unsurpassed in beauty and durability. Our Casement Series features a low-profile folding handle, full 90-degree opening for easy cleaning, and enhanced security with a multi-point locking mechanism.*



## Operating Hardware



Casement windows open to a 90-degree angle, allowing easy cleaning.

## Multi-Point Locking System



Low-profile, single lever, multi-point locking system for secure and easy operation.

## Casement Handles



Folding handle offers smoother, more contemporary, integrated look when nested. Reduces interference with blinds and drapery.





## Casement & Awning—*Window Specifications*

Fusion welded sash and frame corners guarantee durability and dependability.

Special formula PVC prevents scratching or denting.

Casement windows open to a 90-degree angle, allowing for easy cleaning.

Low-profile, single lever, multi-point locking system for secure and easy operation.

Premium foam filled frames and sashes for greater insulating value.

Elegant, sculpted exterior for superior curbside appeal.

Full 1" sealed Insulated Glass Unit for increased insulating power.

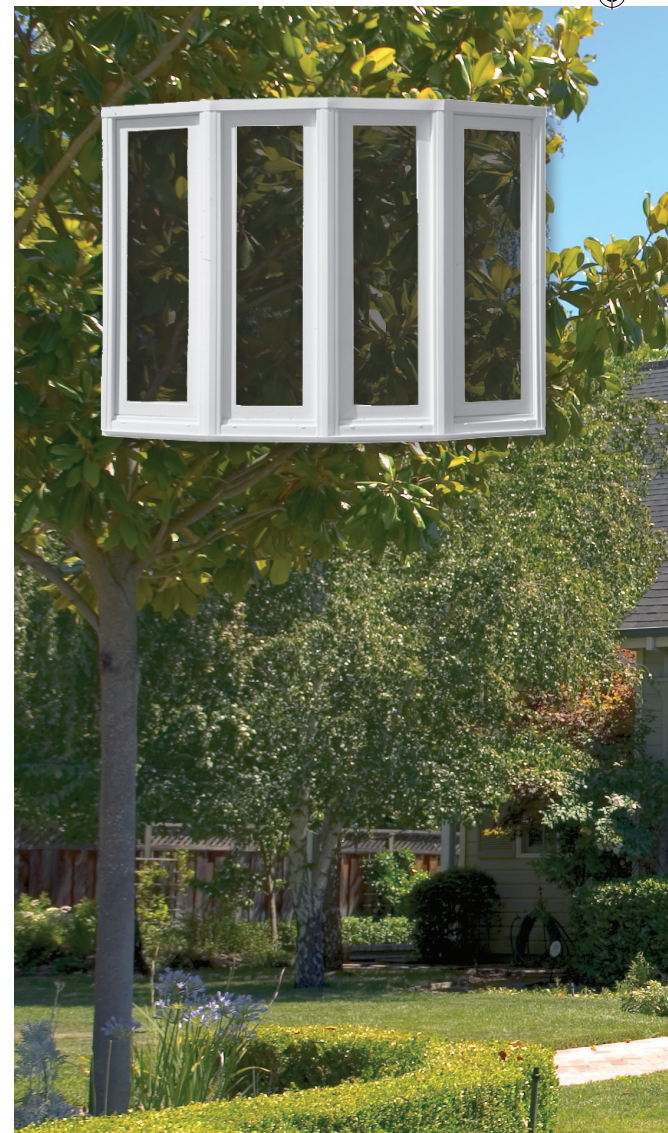
DP-65 Rating—198 mph wind load (200% stronger than industry minimum).





# Bay & Bow

*Grand View Bay & Bow windows are a masterpiece of energy-efficiency. Unique construction makes it easy for you to maintain the comfort level inside your home in every season. And because Grand View Bay & Bow windows are so durable, your home's new look will last a lifetime.*



## Add more room to your rooms

Add space, light and viewing area to your favorite rooms by installing your choice of replacement windows from the extraordinary Grand View bay and bow collection. They'll give your home a new, roomier appearance—a sparkling look that you will agree is nothing short of awe-inspiring.

Framed with furniture-grade wood and clad on the exterior with provocative vinyl, Grand View bay and bow windows offer both strength and style. The windows' interiors feature rich, hand-selected birch or oak veneer, ready for paint or stain.\* Moving sashes tilt in or swing open for easy access, and our special formula vinyl wipes clean with a damp cloth. With Grand View bay and bow windows, you'll never have to scrape or paint outside again!

*\* Birch is standard and oak is optional.*







## Bay & Bow—*Window Specifications*

Special formula PVC used in our windows never needs painting, makes cleaning a snap, and prevents scratching or denting.

---

Multi-channel design allows for additional insulation between window units.

---

1/4" all threaded steel rods between struts tie head and seat boards together for added strength.

---

Duralite™ warm edge technology glass spacer system reduces heat transfer and provides improved seal integrity.

---

1" hardwood cabinet grade veneer head and seat board available in select white birch and red oak.

Insulated glass unit with optimal glass spacer improves year round performance.

---

Insulated seat board helps increase energy savings.



*(cont. on next page)*

## Bay & Bow—Window Specifications (continued from previous page)

### Mullion Construction



1/4" all-threaded steel rods between struts tie head and seat boards together for added strength.

### Custom Fitted Wood Jambs



Bay & Bow window interiors feature rich, hand-selected birch or oak veneer, ready for paint or stain.

### Garden Windows



Grand View garden windows add a bright, new dimension to window design.

Multi-chambered, hollow thermalized insulating system provides dead air space for additional insulation plus greater strength and durability to the window.

---

Fusion welded sash and frame corners guarantee structural integrity.

---

Special formula PVC never needs painting, makes cleaning a snap, and prevents scratching or denting.

---

Insulated seatboard helps increase energy savings.

---

Head and seatboards are available in oak or birch veneer finish and are ready for painting or staining.

---

Adjustable turn-buckle cable hanging system is designed to eliminate possible sagging or bowing.

### Additional features:

---

Each window within the bay or bow unit has custom fitted wood jambs for structural integrity.

---

Windows are seated on a weeping sill platform on the seatboard not directly on the wood seatboard.

---

Duralite™ Warm Edge Spacer System maximizes window performance and longevity.

### *Enhance your Bay and bow windows with these options:*

- Extreme Low-E glass package featuring soft coat high performance Low-E glass with DuraTex™ spacer system and Argon gas.
- High definition screen standard.
- Bay and bow windows are available in white, beige or paintable, stainable interior laminate and twenty-six standard exterior colors.



# Grid Details

## Traditional Grids

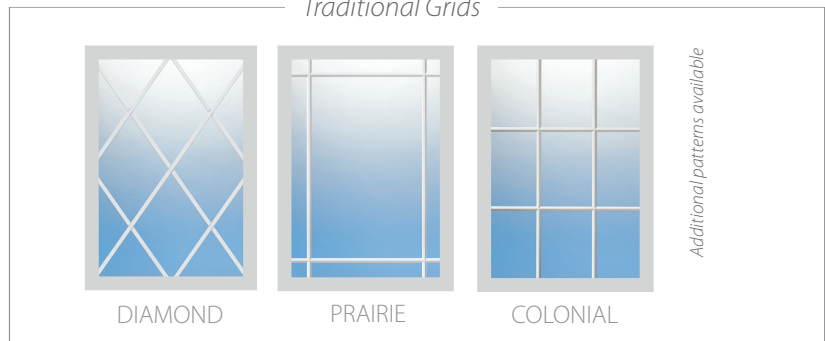
The beauty of cut glass—rainbows of colors, illustrations of shape and depth. Now you can have that elegant look of traditional cut glass. Windows, patio doors, and transoms can all be enhanced in a variety of styles and patterns to match your home’s architectural style.



FLAT



CONTOUR



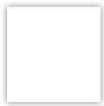
DIAMOND

PRAIRIE

COLONIAL

Additional patterns available

## Color Options



WHITE

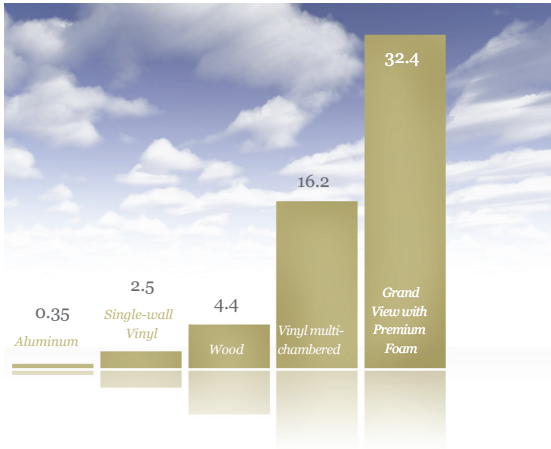


BEIGE

Special formula PVC never needs painting, makes cleaning a snap, and prevents scratching and denting.

\* Beige option available January 2024

## Available Glass Options

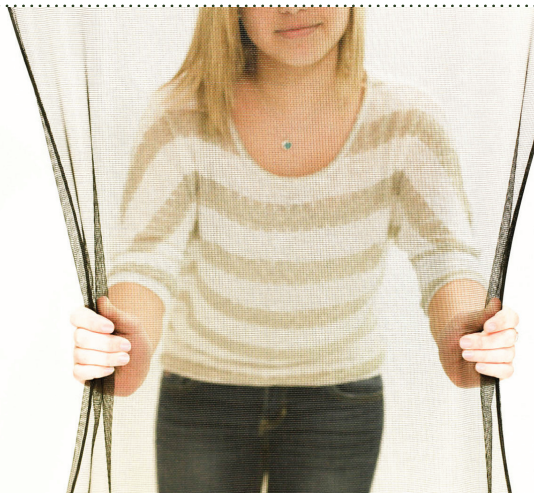


### R-value for Window Frame Materials

The higher the R-value, the higher the insulation value of the window—and the greater the comfort and energy efficiency of your home! (Note: Data represents performance for a 12" piece of frame material.)



THE WORLD'S FIRST FLEXIBLE WINDOW SCREEN



- DURABLE
- STRONG AS STEEL
- 144" ADITIONAL VIEWING AREA
- LIFETIME WARRANTY ON FABRIC AND FRAME
- FREE REPLACEMENT EVEN FOR TEARS



## State-of-the-art Testing Facility

*A modern 200,000+ square foot manufacturing facility equipped with the latest state-of-the-art advances in window manufacturing technology, controlled and monitored by the FeneVision software system that allows extraordinary control of scheduling, manufacturing, finished goods and shipping functions.*

*Each window undergoes a 50-point quality assurance inspection process by highly skilled individuals before leaving the factory.*



## Installing/Finishing Replacement Windows

Purchasing quality replacement windows is crucial, but it's only step one. Seeing your new windows properly installed is arguably more important.



Window Nation utilizes the most highly skilled and trained individuals who specifically specialize in the installation of only windows and doors. Since every installer undergoes weeks of training and is certified by the factory you are ensured there will never be finger pointing if a warranty issue arises. They are true experts in their field with the average installation team completing over 20,000 window installations.

**96% of our windows installed required no follow up service**

**Independent surveys show our customers rate our installation crews at 96% on cleanliness and safety.**

**Our installers complete over 2,400 hours of installer training across the company yearly.**



It's critical that all the pieces that go into your new window installation work together—insulation, caulking sealants and the window itself. There is only one “system” of installation materials in North America that is specifically designed to be compatible with the window, your house, and with each other; and it is used on every install we complete. A perfect installation requires the use of these premium allied materials to ensure an air and water tight seal that lasts.



*ANOTHER SATISFIED HOMEOWNER*

**WN**

**WINDOW NATION**

**WINDOWS • SIDING • DOORS**

**1-866-44-NATION**

**[www.WindowNation.com](http://www.WindowNation.com)**

MHIC #124356 VA#2705-109436A DC#4203 420313000103 PA#104611 NJ#13VH07997100

**(866) 60-NATION | (866) 606-2846 | [WindowNation.com](http://WindowNation.com)**

\*Window Nation reserves the right to make product modifications and the client should solely rely on agreements for all terms and specifications.

Printed in the USA. All photos and illustrations are property of Vytex Windows unless otherwise indicated. Information contained here-in is subject to change without notice.