

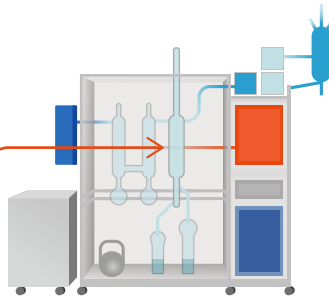
EXTRACTION COLUMN CLEANUP

THE EXTRACTION COLUMN CLEANUP PROCESS

Clear hydrocarbon, solvent residue,
Often inside Class 1 Division 1 setting



Pump must be spark-free
(Explosion proof)



Apply deep vacuum to
remove residue

WELCH VACUUM PUMPS

An integral part of the Column Cleanup process



KEYS TO SUCCESSFUL COLUMN CLEANUP

- AHJs now often requiring pump be inside Class 1 Division 1 room.
- Welch CRVpro16-XPRF motor means it is compatible for use in C1D1 rooms.
- Pumps don't have switches nor line cords and must be installed by a qualified electrician. This is not a DIY install.
- Motors are rated Class 1, Groups B/D and Class 2, Groups E/F/G.
- Many OEM's now include Welch CRVpro16-XPRF.

WELCH CRVpro16-XPRF VACUUM PUMPS IN A NUTSHELL

1. 362.5 l/min (12.8 cfm) x 0.2 microns, 115Volts/60Hz XPRF motor
2. Monitor frequently your oil condition and base pressure reading at inlet.
3. Change oil when darkened, or base pressure rises vs. fresh oil
4. Fast Delivery and Expert Support

Contact Us

Request a Quote

www.welchvacuum.com