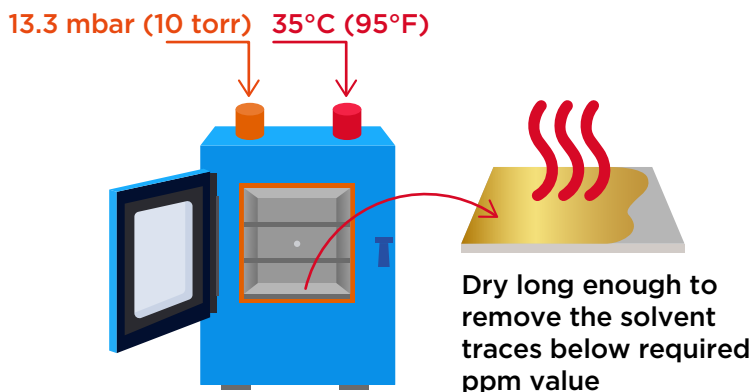


VACUUM OVENS

“Purge Ovens”, “Vacuum Purge Ovens”

THE VACUUM PURGE OVEN PROCESS

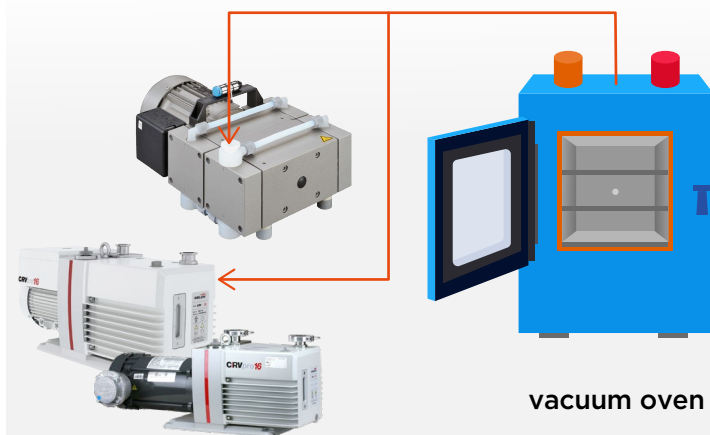
Apply warmth and vacuum to remove all traces of extraction solvents



1. Set desired temperature
2. Evacuate oven to below 10 torr

WELCH VACUUM PUMPS

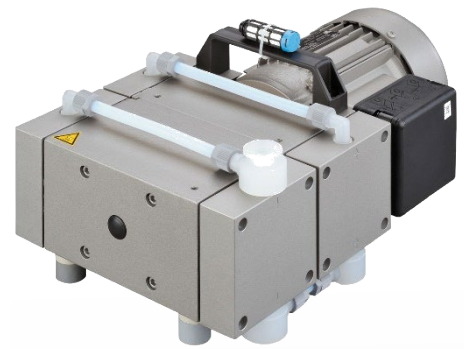
An integral part of the purge oven process



Contact Us

Request a Quote

www.welchvacuum.com



KEYS TO SUCCESSFUL PURGE OVEN OPERATION

- Typical temperatures are 35-40°C (95-105°F) in oven.
- Warm up sample, then apply vacuum.
- Most oils will muffin when vacuum reaches around 677-745 mbar/508-559 torr (20-22" Hg). Open vent valve to shock-collapse muffin, close to continue. Might need more than one shock.
- Vacuum gauges on most ovens are relative and will read lower if at elevation.

WELCH CHEMICAL DUTY DRY VACUUM PUMPS IN A NUTSHELL

1. Dry and Oil-Seal Pumps let you take solvents below 99.8 mg/L (100 ppm).
2. Models 2052, CRVpro8, CRVpro16-XPRF popular
3. Explosion Proof Motor Vacuum Pumps for C1D1 rooms
4. Fast Delivery and Expert Support