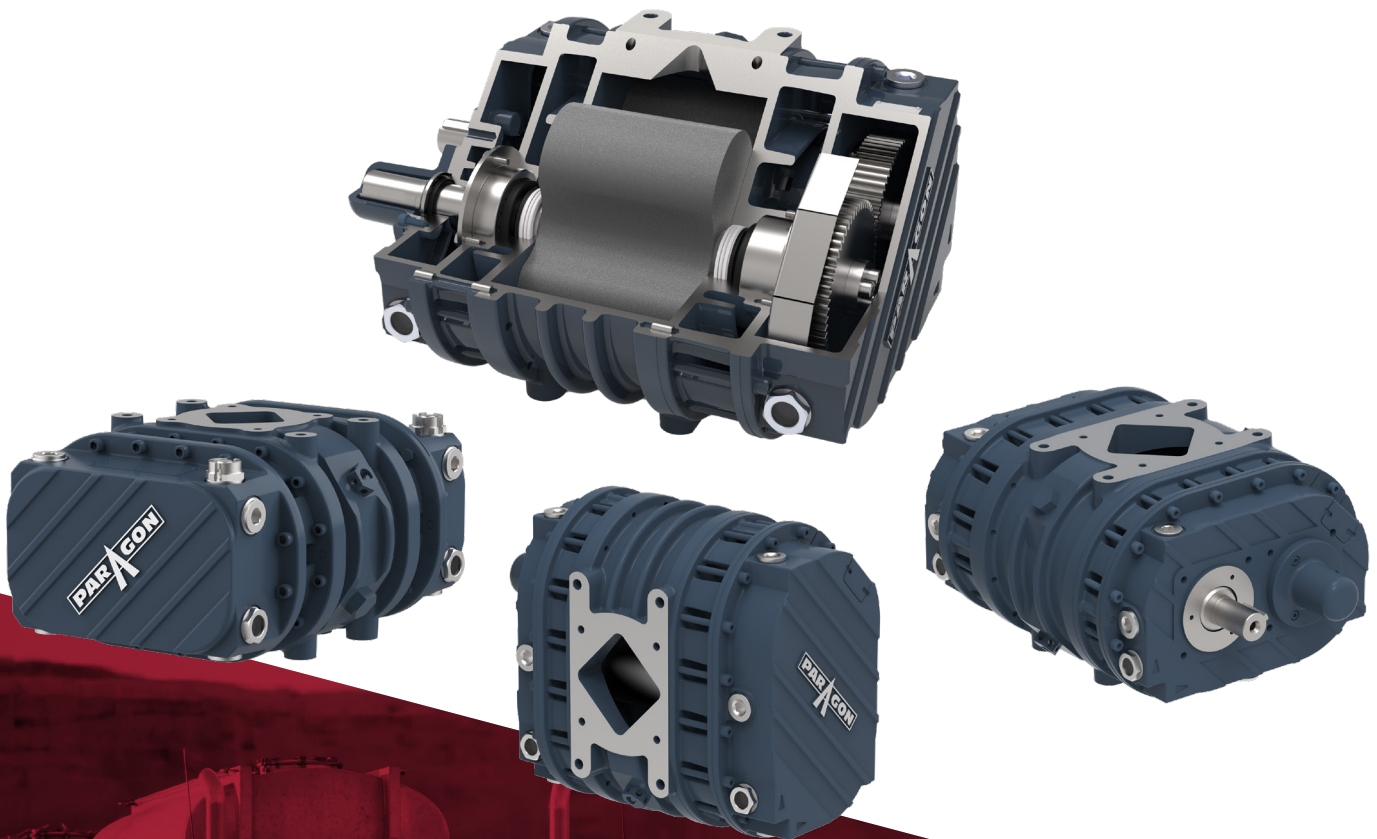




PARAGON PRODUCT PORTFOLIO

# Dry Bulk Solutions



[WWW.PARAGONDIRECT.COM](http://WWW.PARAGONDIRECT.COM)



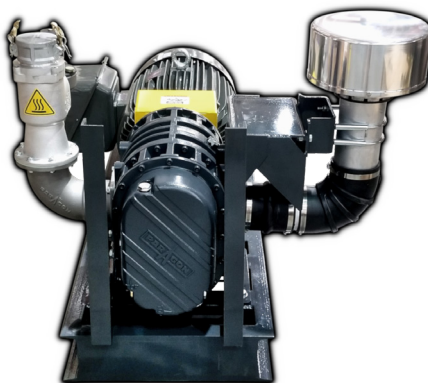
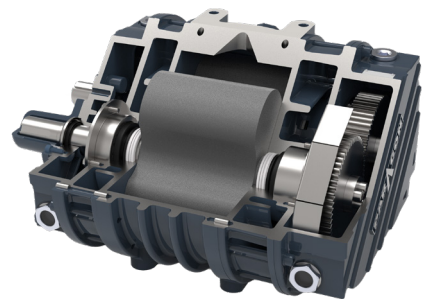
# Engineered for Performance Built for Reliability

Discover Paragon's full suite of dry bulk handling solutions engineered to deliver unmatched efficiency, durability and simplified operation. Whether you are moving powders, granules, or pellets, Paragon has the power, precision and innovation to keep your operation flowing.

## Delivering A Diversified Dry Bulk Product Line

Our selection includes a variety of bi-lobe pneumatic conveying blowers to best fit your application. Paragon also specializes in a full suite of blower accessories including mounting, inlet and silencer kits for driver or passenger, and vertical or horizontal air flow mounting. We even offer electric stationary packages ideal for operating as stand-alone units on location.

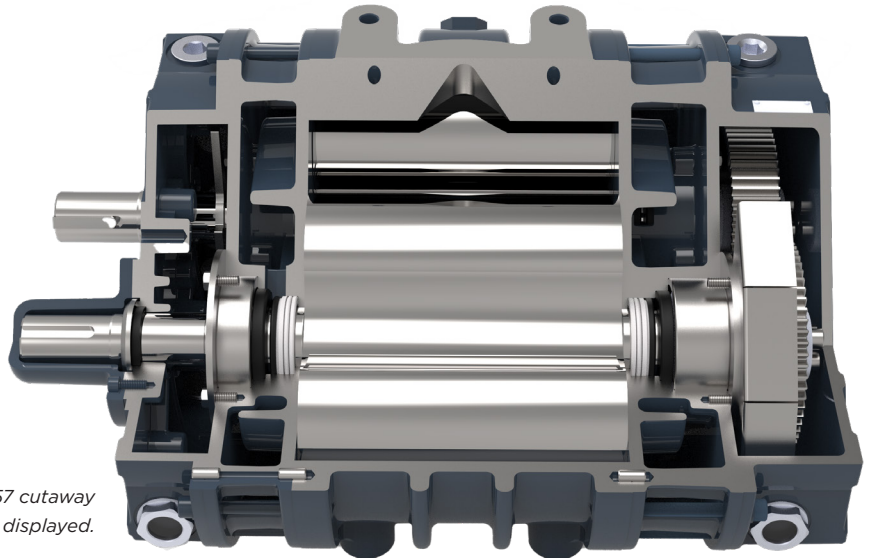
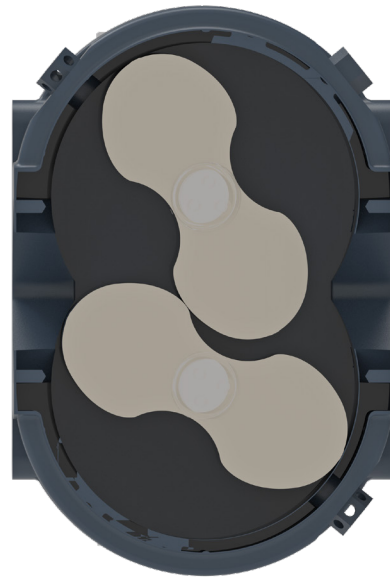
Our industry expert sales and engineering teams have decades of experience specializing in system design ready to assist fleets and owner operators upfit their trucks in the most cost-effective manner while delivering long-term performance.





# Paragon Blower Features & Benefits

- Simple, proven bi-lobe rotor design
- Compact design for reduced rail space
- Driver or passenger side mounting options
- Horizontal or vertical air flow mounting options
- Four convenient melt plug locations
- Dual splash lubrication, no grease
- Reduced noise due to special port and lobe design
- Large 1" sight glasses
- Easy timing method
- Bolt on port flanges
- Light weight endplate design
- Shaft seal guard for added protection



*P1057 cutaway  
displayed.*





## P657 Lobe Blower

### Common Applications Include:

Cement, Fly Ash, Powdered Lime and more!



- Up to 604 CFM airflow
- Capable of continuous pressure up to 18 PSI, intermittent pressure up to 20 PSI and vacuum up to 17 inHg
- Blower RPM range: 1000 to 2000 RPM
- Only 297 lbs
- 4 mounting options
- PTO, hydraulic, or belt drive

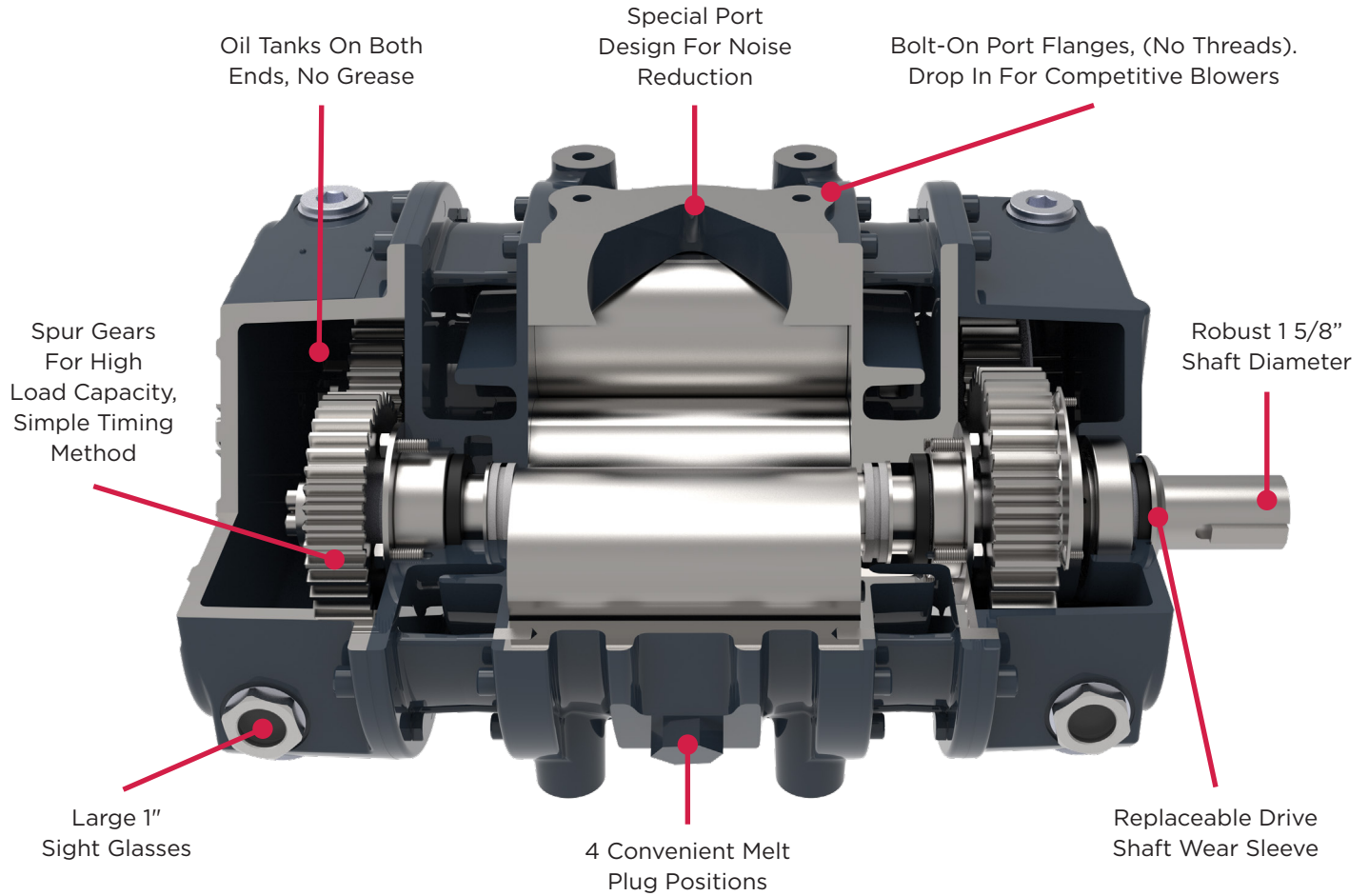
### P657 Specifications & Capacities

RPM	Pressure Performance & Horsepower								Vacuum Performance & Horsepower					
	12 PSIG		16 PSIG		18 PSIG		20 PSIG		12 inHg		15 inHg		17 inHg	
	CFM	HP	CFM	HP	CFM	HP	CFM	HP	CFM	HP	CFM	HP	CFM	HP
1000	246	19	229	26	221	29	-	-	247	10	222	12	-	-
1100	282	21	265	28	257	32	-	-	283	11	258	13	-	-
1200	318	23	301	31	293	34	286*	38	319	12	294	14	-	-
1300	354	25	337	33	329	37	321*	41	355	14	330	17	310*	19
1400	390	27	372	36	365	40	357*	45	390	14	365	17	346*	19
1500	425	29	408	39	400	43	393*	48	426	14	401	18	382*	20
1600	461	31	444	41	436	46	429*	51	462	15	437	19	418*	22
1700	497	33	480	44	472	49	465*	55	498	16	473	20	453*	23
1800	533	35	516	47	508	52	500*	58	534	17	509	22	489*	24
1900	569	37	551	49	544	55	536*	61	569	18	544	23	525*	26
2000	604	40	587	52	579	58	572*	65	605	19	580	24	561*	27

\*Intermittent

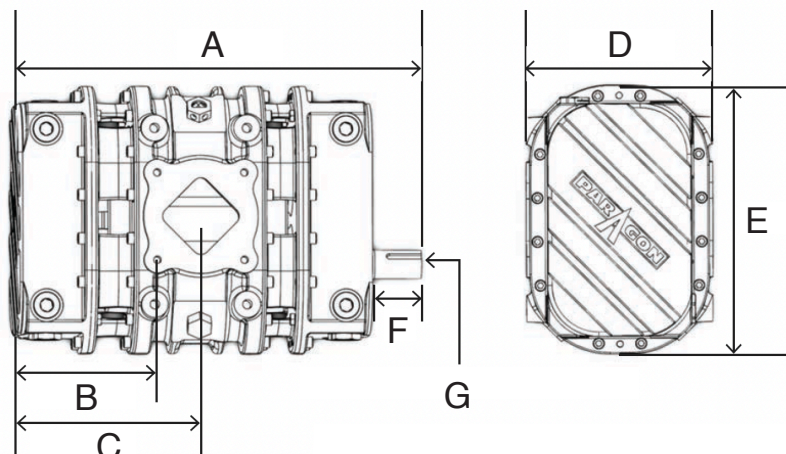


# P657 Features

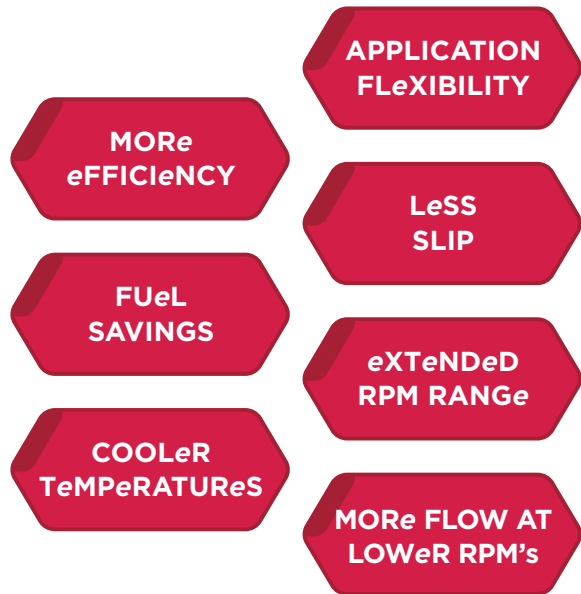
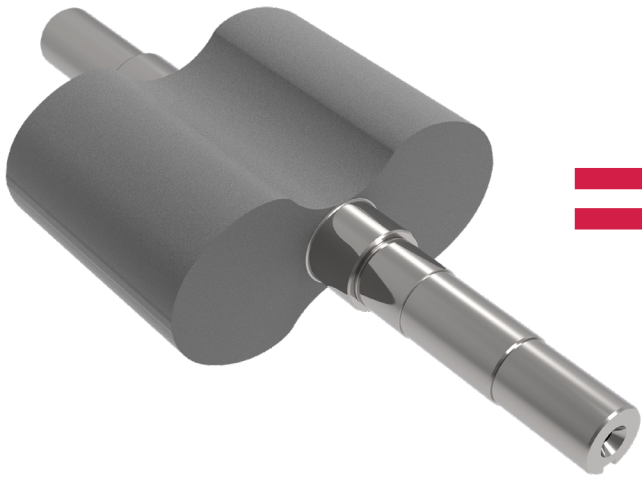


## P657 Dimensions

Dimension Letter	P858
A	23.0"
B	7.66"
C	10.28"
D	10.5"
E	15.1"
F	3"
G	1 5/8" Shaft x 3/8" Key



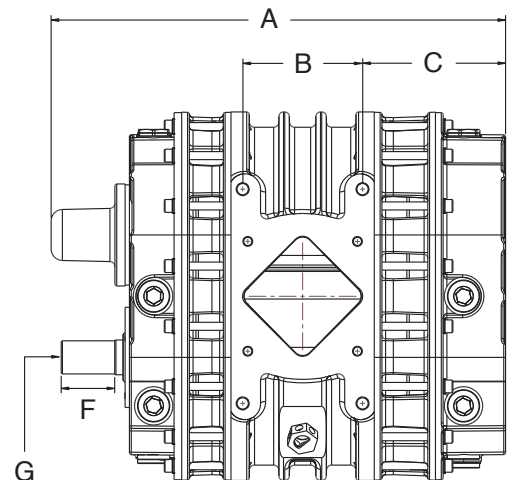
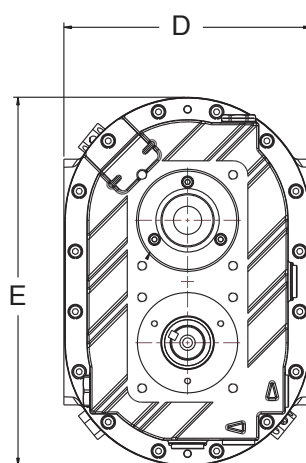
# What's the "e" in P858e? COATeD LOBeS!



The P858e special coated rotors minimize the air that gets trapped inside the blower resulting in more air discharged and more cool air intake, equating to lower temperatures, a more expansive and efficient operating range and quicker offloads at lower RPM's. Lower discharge temperatures also prevents melt plug activation equating to reduced downtime.

## P858e Dimensions

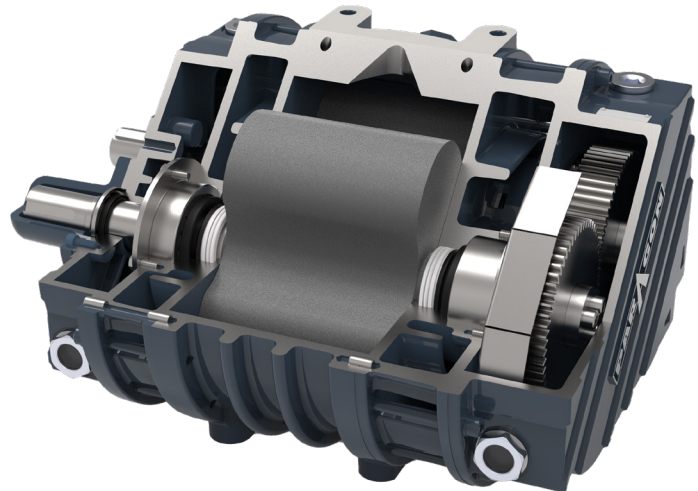
Dimension Letter	P858
A	22.25"
B	5.88"
C	7.01"
D	12.13"
E	18.06"
F	2.36"
G	1 5/8" Shaft x 3/8" Key







- Up to 1020 CFM airflow
- Capable of continuous pressure up to 20 PSI and vacuum up to 18 inHg
  - Achieve higher flow levels at lower RPM's!
  - Averages 7.1% less HP to achieve the same flow rates versus a non-coated blower
- Extended blower RPM range: 600 to 3000 RPM
- Only 340 lbs
- 4 mounting options
- PTO, hydraulic, or belt drive



## P858e Specifications & Capacities

RPM	Pressure Performance & Horsepower										Vacuum Performance & Horsepower							
	8 PSIG		12 PSIG		16 PSIG		18 PSIG		20 PSIG		8 inHg		12 inHg		16 inHg		18 inHg	
	CFM	HP	CFM	HP	CFM	HP	CFM	HP	CFM	HP	CFM	HP	CFM	HP	CFM	HP	CFM	HP
600	131	7.4	113	11.1	98	14.8	-	-	-	-	145	3.7	122	5.5	-	-	-	-
700	166	8.7	148	12.9	133	17.2	126	19.4	-	-	180	4.3	157	6.4	-	-	-	-
800	201	9.9	183	14.8	168	19.7	161	22.1	-	-	215	5.0	192	7.4	157	10.3	-	-
900	236	11.2	218	16.6	203	22.1	196	24.9	190	27.6	250	5.6	227	8.3	192	11.6	-	-
1000	271	12.4	253	18.5	238	24.6	231	27.6	225	30.7	285	6.2	262	9.2	227	12.9	-	-
1100	306	13.6	288	20.3	273	27.1	266	30.4	260	33.8	320	6.8	297	10.1	262	14.2	253	15.1
1200	341	14.9	323	22.2	308	29.5	301	33.2	295	36.8	355	7.4	332	11.0	297	15.5	288	16.4
1300	375	16.1	358	24.0	343	32.0	336	35.9	329	39.9	390	8.1	367	11.9	332	16.8	323	17.8
1400	410	17.4	393	25.9	378	34.4	371	38.7	364	43.0	425	8.7	402	12.9	367	18.1	358	19.2
1500	445	18.6	428	27.7	413	36.9	406	41.5	399	46.0	460	9.3	437	13.8	402	19.4	393	20.5
1600	480	19.8	463	29.6	448	39.4	441	44.2	434	49.1	495	9.9	472	14.7	437	20.7	428	21.9
1700	515	21.1	498	31.4	483	41.8	476	47.0	469	52.2	530	10.5	507	15.6	472	22.0	463	23.3
1800	550	22.3	533	33.3	518	44.3	511	49.8	504	55.3	565	11.1	542	16.5	506	23.3	498	24.6
1900	585	23.6	568	35.1	553	46.7	546	52.5	539	58.3	600	11.8	577	17.5	541	24.6	533	26.0
2000	620	24.8	602	37.0	587	49.2	581	55.3	574	61.4	635	12.4	612	18.4	576	25.9	568	27.4
2100	655	26.0	637	38.8	622	51.7	616	58.1	609	64.5	670	13.0	647	19.3	611	27.2	603	28.7
2200	690	27.3	672	40.7	657	54.1	651	60.8	644	67.5	705	13.6	682	20.2	646	28.5	638	30.1
2300	725	28.5	707	42.5	692	56.6	686	63.6	679	70.6	740	14.2	717	21.1	681	29.8	673	31.5
2400	760	29.8	742	44.4	727	59.0	721	66.4	714	73.7	775	14.9	752	22.1	716	31.0	708	32.8
2500	795	31.0	777	46.2	762	61.5	756	69.1	749	76.7	810	15.5	787	23.0	751	32.3	743	34.2
2600	830	32.2	812	48.1	797	64.0	791	71.9	784	79.8	844	16.1	822	23.9	786	33.6	777	35.6
2700	865	33.5	847	49.9	832	66.4	825	74.6	819	82.9	879	16.7	856	24.8	821	34.9	812	36.9
2800	900	34.7	882	51.8	867	68.9	860	77.4	854	86.0	914	17.3	891	25.7	856	36.2	847	38.3
2900	935	36.0	917	53.6	902	71.3	895	80.2	889	89.0	950	18.0	926	26.7	891	37.5	882	39.7
3000	970	37.2	952	55.5	937	73.8	930	82.9	924	92.1	984	18.6	961	27.6	926	38.8	917	41.1

**Extended RPM range = more flow at lower RPMs.**

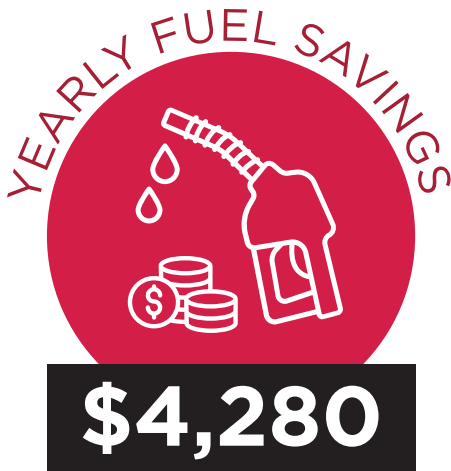
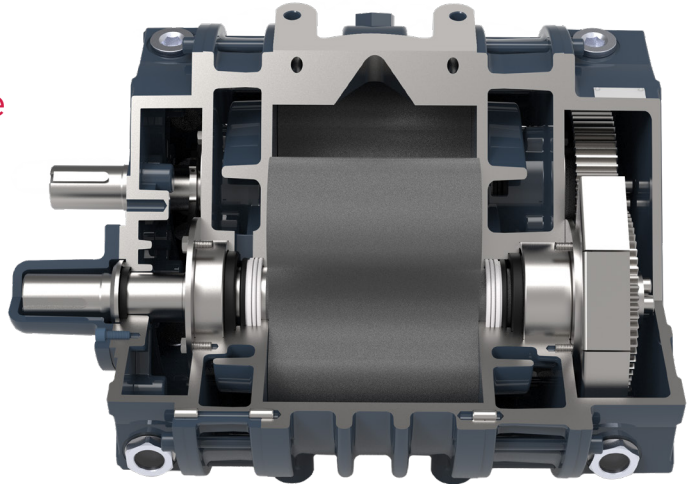
# Slash Fuel Costs. Boost Profits. Save Thousands Every Year.



The P858e allows you to increase the products you are capable of unloading efficiently with an expanded flow and RPM range.

## Typical Cement Unload P858 vs P858e

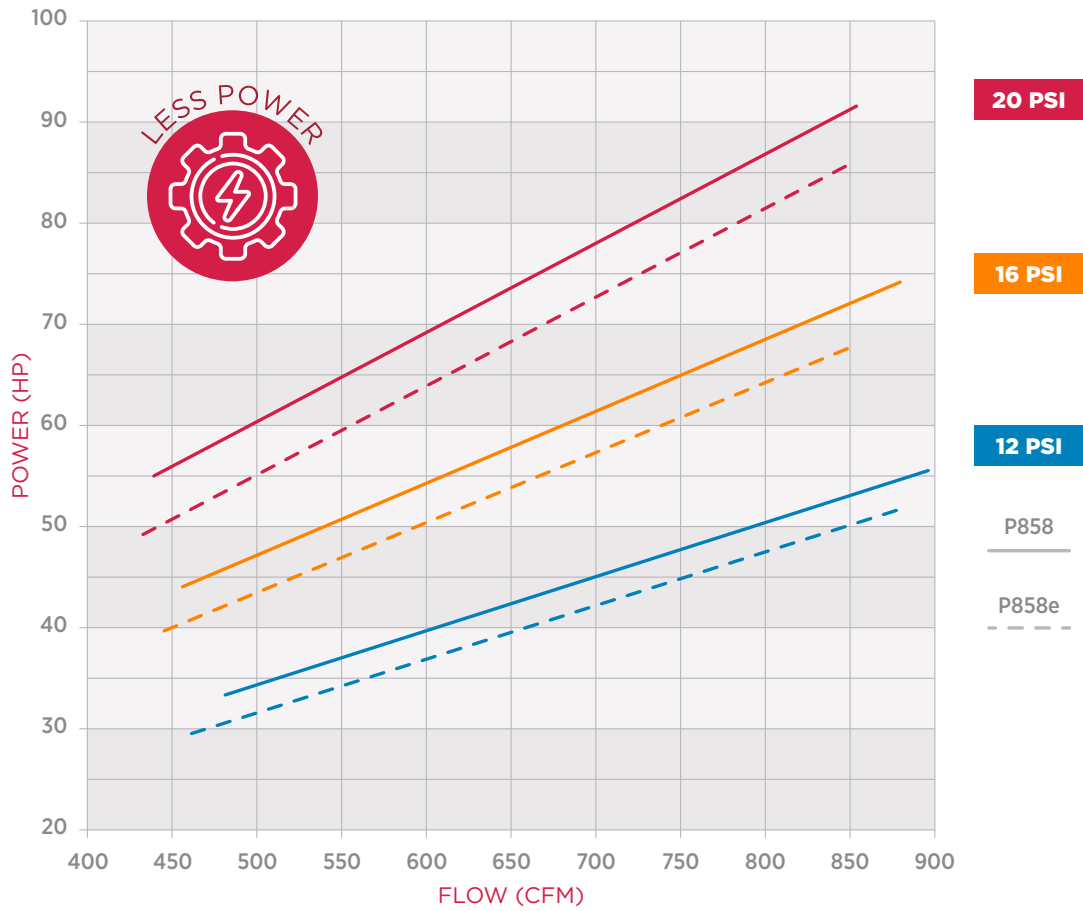
- With a minimum speed of 1800 RPM, the P858 cannot achieve the ideal cement flow range of 250-348 CFM through a 4" diameter pipe.
- P858e allows you to use the ideal amount of flow vs too much, allowing the operator to move more product and less air!
- More product less air = faster unload times



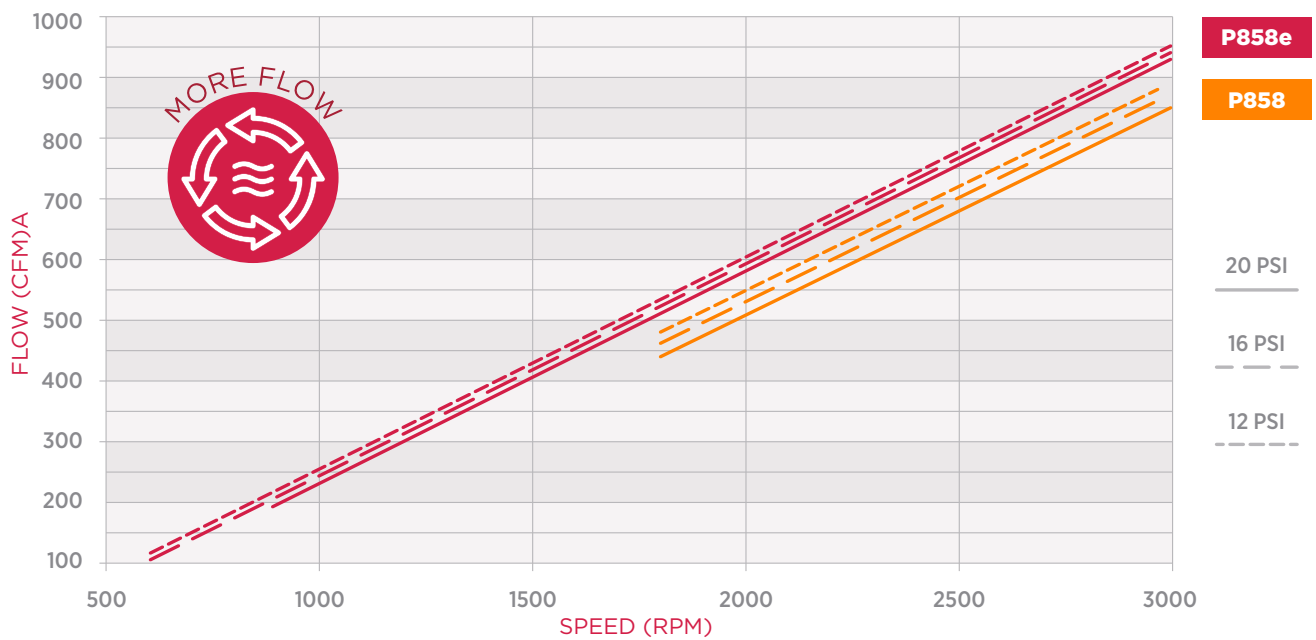
	P858	P858e
Pressure	20 PSI	20 PSI
Flow	437 CFM	260 CFM
Power	55 HP	33.8 HP
Engine Speed	1000 RPM	1000 RPM
Blower Speed	1800 RPM	1100 RPM
Typical Unload Time	60 min	35 min
Total Fuel Consumption	2.42 gal	1.49 gal
Diesel Fuel Cost   US Average	\$3.67 / gal	\$3.67 / gal
Total Cost to Unload	\$8.89	\$5.46
<b>Comparison Per Year</b> Based on 3 loads per day, 5 days per week, 50 weeks per year.		
Time / Year	750 hrs	437.5 hrs
Yearly Fuel Consumption	\$6,668	\$2,388
<b>Total Yearly Savings</b>		<b>\$4,280</b>



### P858 vs. P858e Power Comparison



### P858e vs. P858 Flow Comparison





## P858 Lobe Blower

### Common Applications Include:

Frac Sand, Cement, Plastics, Flour and more!



- Up to 1000 CFM airflow
- Capable of continuous pressure up to 20 PSI and vacuum up to 17 inHg
- Blower RPM Range: 1800 to 3000 RPM
- Only 340 lbs
- PTO, hydraulic, or belt drive

### P858 Specifications & Capacities

RPM	Pressure Performance & Horsepower								Vacuum Performance & Horsepower					
	12 PSIG		16 PSIG		18 PSIG		20 PSIG		12 inHg		15 inHg		17 inHg	
	CFM	HP	CFM	HP	CFM	HP	CFM	HP	CFM	HP	CFM	HP	CFM	HP
1800	479	33	462	42	447	50	-	-	493	17	464	21	-	-
1900	514	35	497	44	482	52	-	-	528	18	498	22	475	25
2000	549	37	532	46	516	55	507	61	563	18	533	23	510	26
2100	584	39	566	49	551	58	541	64	597	19	568	24	545	27
2200	618	41	601	51	586	61	576	68	632	20	602	25	579	28
2300	653	43	636	53	620	64	611	71	667	21	637	26	614	30
2400	688	45	671	56	655	66	645	74	701	22	672	27	649	31
2500	722	47	705	58	690	69	680	77	736	23	707	29	683	32
2600	757	48	740	60	724	72	715	80	771	24	741	30	718	34
2700	792	50	775	63	759	75	750	83	806	25	776	31	753	35
2800	826	52	809	65	794	78	784	86	840	26	811	32	787	36
2900	861	54	844	67	829	81	819	89	875	27	845	33	822	38
3000	896	56	879	70	863	83	854	92	910	28	880	34	857	39





## P1057 Lobe Blower

### Common Applications Include:

Limestone, Plastic Pellets, Slag, Barite,  
Heavy Minerals and more!

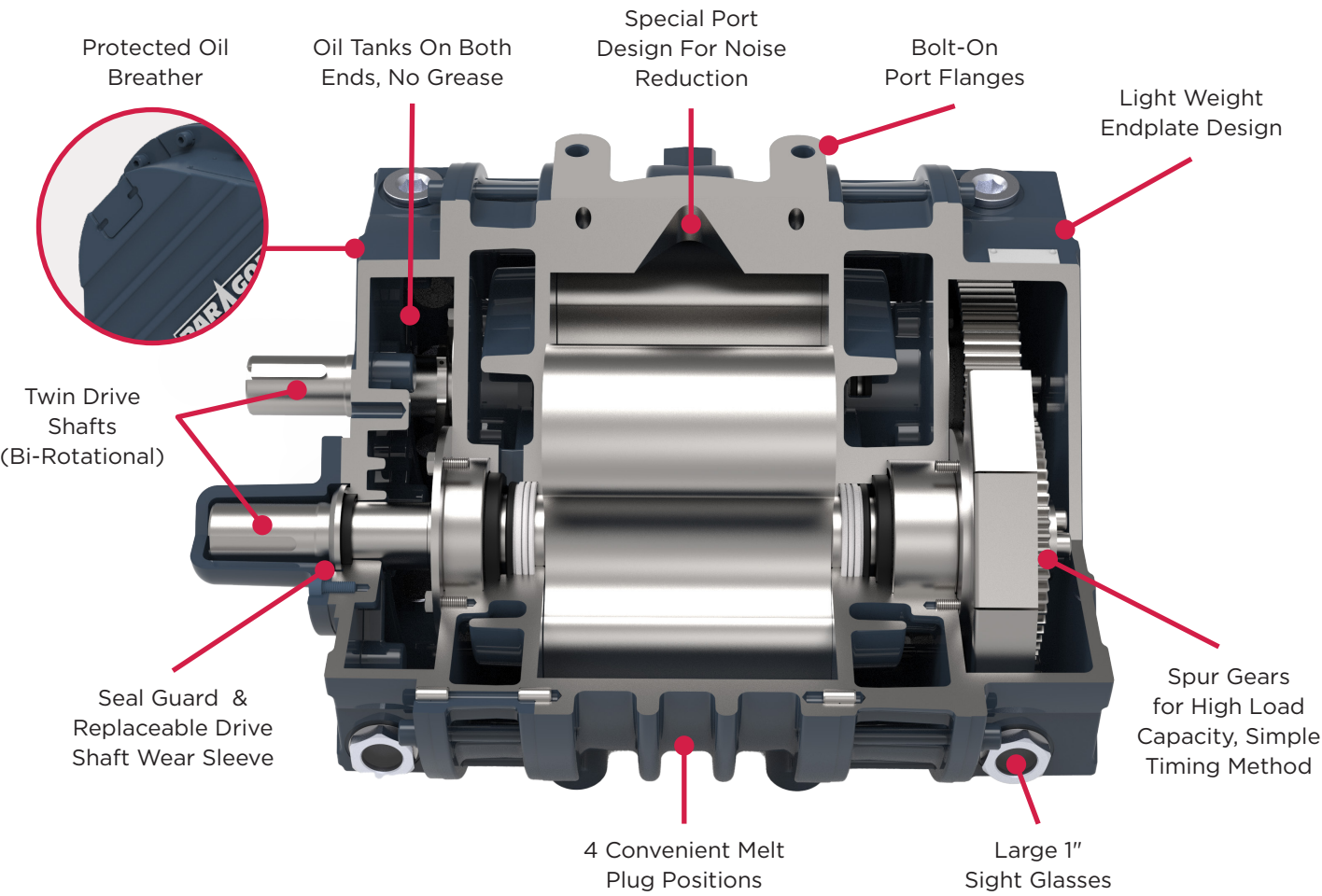


- Up to 1340 CFM airflow
- Capable of continuous pressure up to 19 PSI and vacuum up to 17 inHg
- Blower RPM Range: 1700 to 3000 RPM
- Only 402 lbs
- PTO, hydraulic, or belt drive

### P1057 Specifications & Capacities

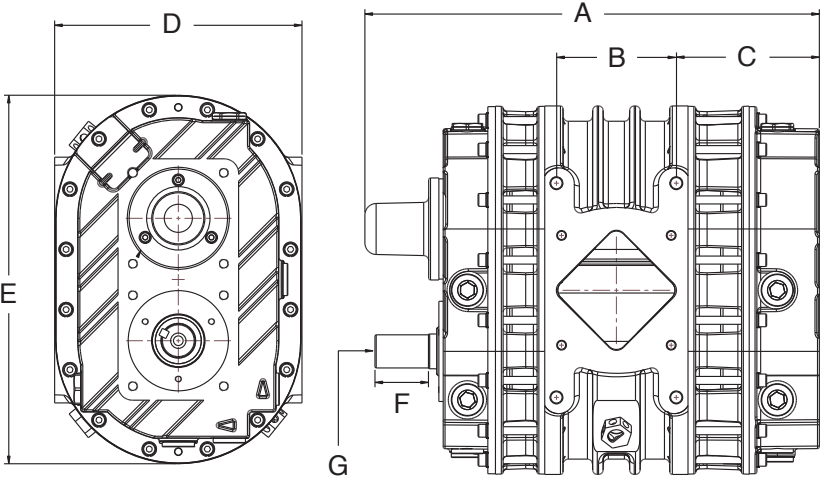
RPM	Pressure Performance & Horsepower								Vacuum Performance & Horsepower					
	12 PSIG		16 PSIG		18 PSIG		19 PSIG		12 inHg		15 inHg		17 inHg	
	CFM	HP	CFM	HP	CFM	HP	CFM	HP	CFM	HP	CFM	HP	CFM	HP
1700	587	42	556	55	543	62	-	-	605	22	565	27	-	-
1800	633	44	602	59	589	66	582	69	651	22	611	27	-	-
1900	679	47	648	62	635	70	628	73	697	23	657	29	626	32
2000	725	49	694	65	681	73	674	77	743	24	703	30	672	35
2100	771	52	740	69	727	77	720	81	789	25	749	32	718	36
2200	817	54	786	72	773	81	766	85	835	27	795	33	764	38
2300	863	57	832	75	819	84	812	89	881	28	841	35	810	39
2400	909	59	878	79	865	88	858	93	927	29	887	36	856	41
2500	955	61	924	82	911	92	904	97	973	30	933	38	902	43
2600	1001	65	970	85	957	96	950	101	1019	32	979	39	948	44
2700	1047	67	1016	89	1003	100	996	105	1065	33	1025	41	994	46
2800	1093	70	1062	92	1049	103	1042	109	1111	34	1071	42	1040	48
2900	1139	72	1108	96	1095	107	1088	113	1157	35	1117	44	1086	50
3000	1185	75	1154	99	1141	111	1134	117	1203	36	1163	45	1132	51

# P858 & P1057 Features



## P858 & P1057 Dimensions

Dimension Letter	P858	P1057
A	22.25"	24.38"
B	5.88"	5.88"
C	7.01"	8.13"
D	12.13"	12.13"
E	18.06"	18.06"
F	2.36"	2.36"
G	1 5/8" Shaft x 3/8" Key	1 5/8" Shaft x 3/8" Key





# Paragon Stationary Packages

## Output Force That Holds Steady

Paragon Tank Truck Equipment offers robust stationary blower packages designed for dry bulk pneumatic applications. These factory-assembled systems are engineered for both pressure and vacuum operations, making them ideal for use on dry bulk tankers, storage pigs, or as stand-alone units. Built for reliability and convenience, Paragon stationary packages provide efficient solutions for material handling in industrial or pop-up site settings.

### FLEXIBLE OPTIONS TO MEET YOUR APPLICATION NEEDS

#### P858 Blower Packages

up to 1000 CFM

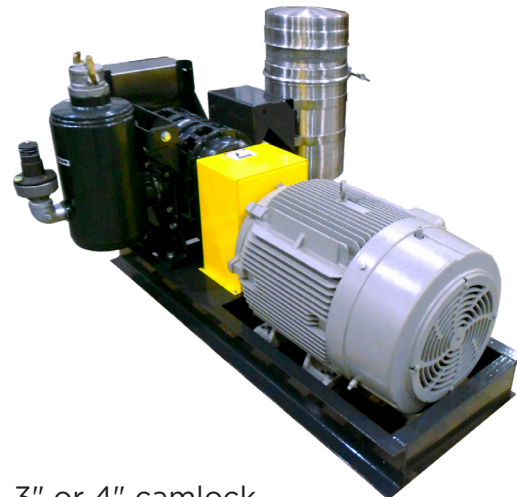
- Typically for systems under 150 ft or less overall pipework
- Premium 50 or 60 HP skid mounted electric motor



#### P1057 Blower Packages

up to 1340 CFM

- Typically for systems over 150 ft overall pipework length
- Premium 60 or 75 HP skid mounted electric motor



Pressure or vacuum packages with multiple options available including:

- Pre-cleaner
- Check valve
- 3" or 4" camlock
- Filter kit
- Silencer
- Starter box bracket



# Power Your Fleet with Complete Transport Blower Kits

Paragon is your one-stop-shop for complete blower set-ups for any configuration. From mounting kits, inlet kits, silencer kits and pre-cleaner kits for both horizontal and vertical configurations, Paragon has it all!

## Elite Performance. Ultimate Solutions.

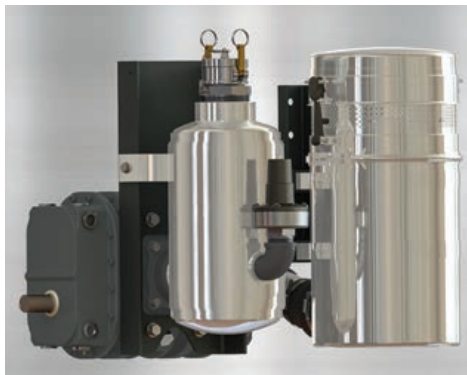
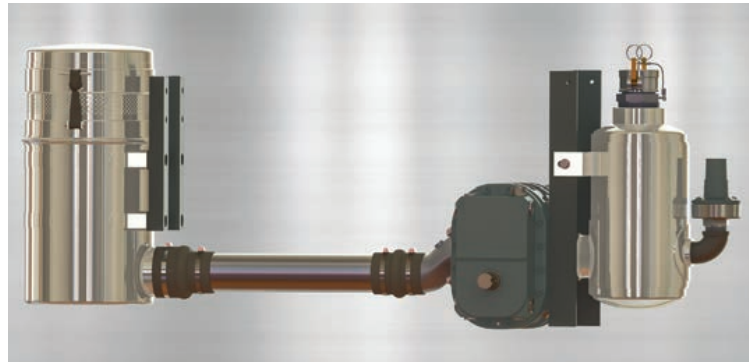
- Versatile blower systems for any application
  - Everything included from drive flange to camlocks
- Designed for today's trucks that have minimal frame rail spacing
- System compatible for any truck or transmission model on the market
- Options for both pressure and vacuum applications
  - Custom heat and temperature gauge options
  - Vacuum breaker system offered
- Driver and passenger side setups available
- PTO's offered for specific blower applications





## Horizontal Air Flow

- Combination blower and silencer mount bracket
- Stainless steel or steel silencer options
- Across the frame air filter mounting
- Available air filter mounting bracket

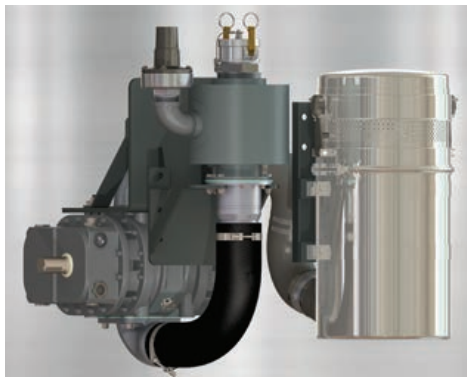


## Horizontal Air Flow with Adjacent Air Filter

- Stainless steel or steel silencer options
- Positions air filter next to the silencer
- Available air filter mounting bracket
- Single frame rail solution

## Vertical Air Flow

- Low profile for max ground clearance
- Silencer bolt onto flanged blower connection
- Optional camlock / check valve (no silencer)
- Requires the least amount of frame rail space



## Vertical Air Flow (P657 Only) Bottom Discharge

- Low profile for max ground clearance
- Silencer bolts onto flanged blower connection
- Blower mount adapter for competitive bracket
- Optional camlock / check valve (no silencer)
- Improves PTO driveline positioning = longer u-joint life





## Paragon Tank Truck Equipment

[www.paragondirect.com](http://www.paragondirect.com)



©2026 Paragon Tank Truck Equipment, LLC Printed in U.S.A.  
PG-DRY-BULK-FAM 1st Ed. 1/26