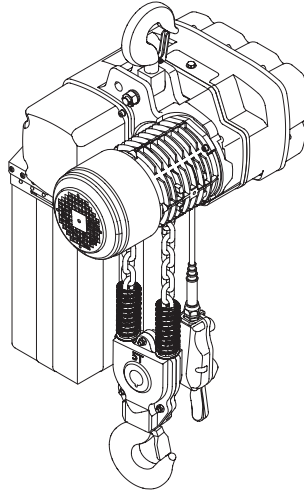




Electric Chain Hoist

EVLK Series: 1/2 to 5 ton



Product Parts Information



Save These Instructions

When tool life has expired, it is recommended to:

- Disassemble the tool
- Degrease the tool
- Separate tool parts by material for correct recycling

Tool repair and maintenance should be conducted by an authorized service center.

Refer all communications to the nearest **Ingersoll Rand** office or distributor.

Manuals are available at ingersollrand.com

Table 1: Product Information Manuals

Publication	Part/Document Number
Product Safety Information Manual	TL-EVLK-SIM
Product Information Manual	TL-EVLK-PIM

Parts Ordering Information

These products are designed and constructed to provide long, trouble-free service. In time it may be necessary to order and install new parts to replace those that have been subjected to wear.

For your convenience and future reference, it is recommended that the following information be recorded.

Model Number _____

Serial Number _____

Date Purchase _____

When ordering replacement parts, please specify the following:

1. Complete model number and serial number as it appears on the data (name) plate.
2. Part number(s) and part description as shown in this manual.
3. Quantity required.

The data (name) plate is located on the product.

NOTICE

- **Continuing improvement and advancement of design may cause changes to this equipment which are not included in this manual. Manuals are periodically revised to incorporate changes. Always check the manual edition number on the front cover for the latest issue.**
- **Sections of this manual may not apply to your product.**
- **The use of other than genuine Ingersoll Rand replacement parts may result in safety hazards, decreased performance and increased maintenance, and will invalidate all warranties.**

Return Goods Policy

Ingersoll Rand will not accept any returned goods for warranty or service unless prior arrangements have been made and written authorization has been provided from the location the goods were purchased.

Products that have been modified without Ingersoll Rand approval, mishandled or overloaded will not be repaired or replaced under warranty. A printed copy of the warranty that applies to this product is provided inside the back cover of the product information manual or in some cases the parts manual.

Disposal



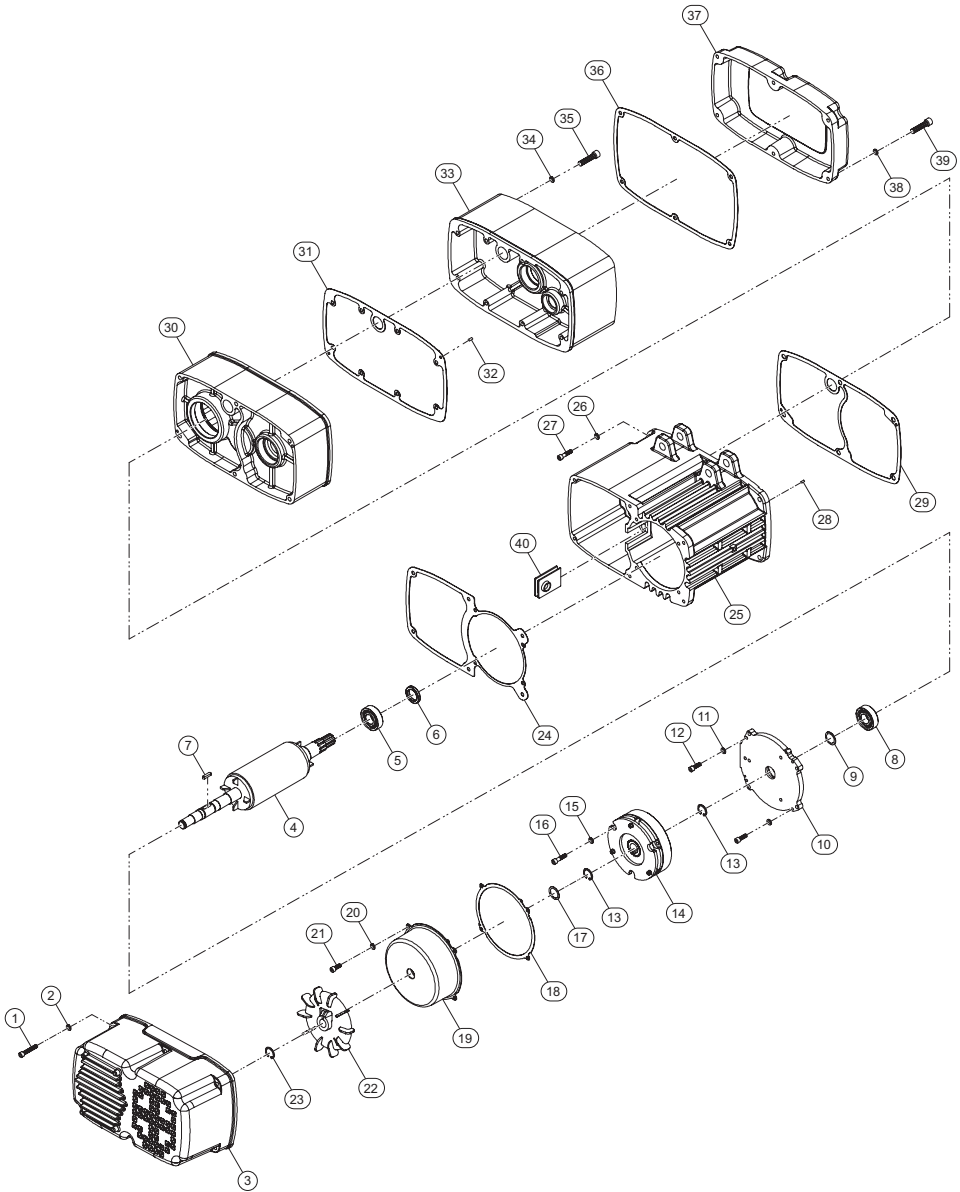
When the life of the product has expired, it is recommended that it be disassembled, degreased and parts separated as to materials so that they may be recycled.

For additional information contact:

Ingersoll Rand

Motor and Housing Assembly for EVLK0501, EVLK1001 and EVLK2001 - Exploded View

Figure 1: Motor and Housing Assembly Drawing (MHP5269)



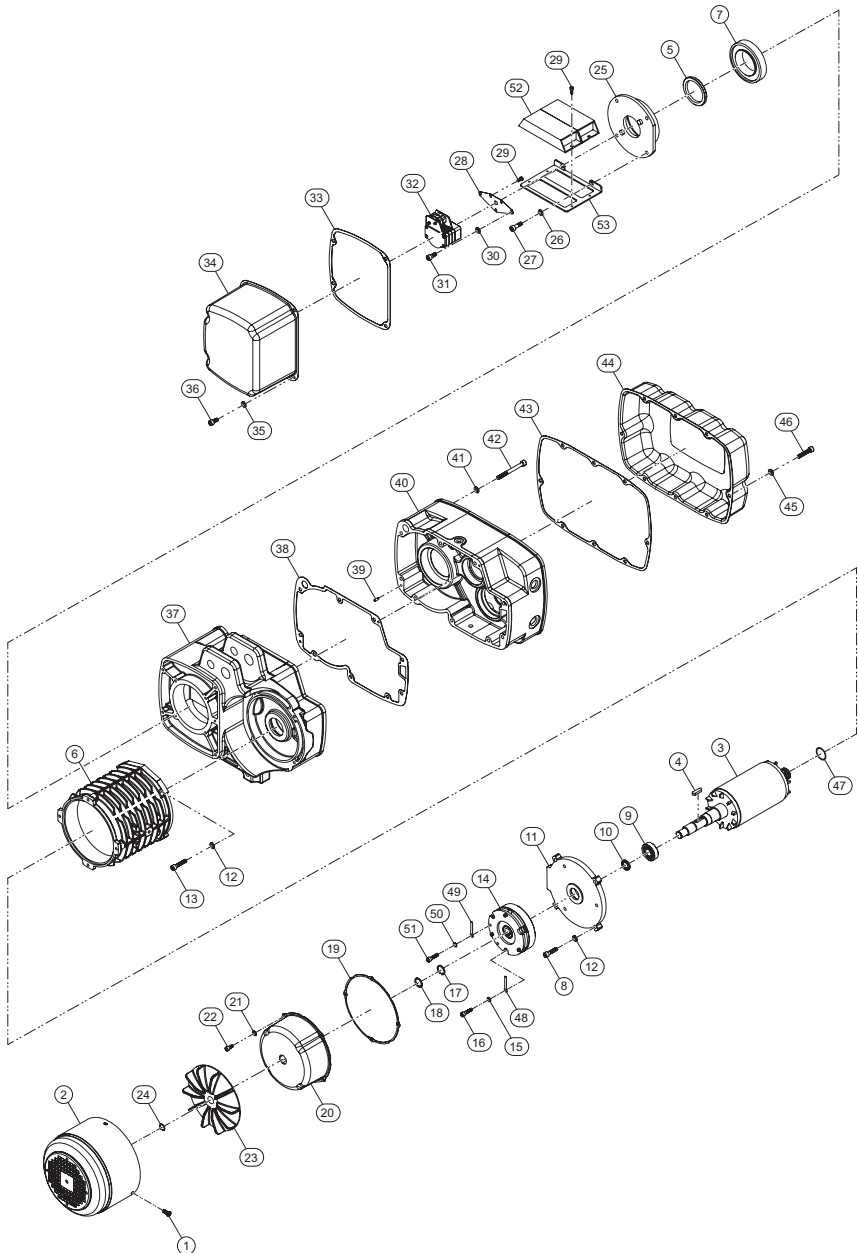
Motor and Housing Assembly - Parts List

Item No.	Part Description	Total Qty.	Part Number (CCN)		
			EVLK0501	EVLK1001	EVLK2001
1	Hex. Recess Bolt (M5 × 0.8 × 45)	6			
2	Spring Washer (M5)	6			
3	End Cover	1			
4	Motor Rotor	1			
5	Bearing (6204 2RS)	1			
6	Oil Seal (Ø 20 × Ø 35 × 8t)	1			
7	Key (6 × 6 × 20L)	1			
8	Bearing (6204 2RS)	1			
9	Oil Seal (Ø 20 × Ø 35 × 8t)	1			
10	Motor End Cover	1			
11	Spring Washer (M5)	4			
12	Hex. Recess Bolt (M5 × 0.8 × 20)	4			
13	Retaining Ring (S-19)	2			
14	Brake Assembly (SNT-102-075)	1			
15	Spring Washer (M6)	3			
16	Hex. Recess Bolt (M6 × 1.0 × 35)	3			
17	Oil Seal (VA18)	1			
18	Brake End Cover Gasket	1			
19	Brake End Cover	1			
20	Spring Washer (M5)	4			
21	Hex. Recess Bolt (M5 × 0.8 × 10)	4			
22	Fan (Ø 124 × Ø 14)	1			
23	Retaining Ring (S-14)	1			
24	End Cover Gasket	1			
25	Motor Stator Assembly	1			
26	Spring Washer (M8)	6			
27	Hex. Bolt (M8 × 1.25 × 35)	6			
28	Pin (Ø 5 × 12)	2			

Item No.	Part Description	Total Qty.	Part Number (CCN)		
			EVLK0501	EVLK1001	EVLK2001
29	Motor Gasket	1			
30	Gearbox	1			
31	Gearbox Gasket	1			
32	Pin (Ø5 × 12)	2			
33	Gearbox Cover	1			
34	Spring Washer (M6)	6			
35	Hex. Recess Bolt (M6 × 1.0 × 55)	6			
36	Electric Cover Gasket	1			
37	Electric Cover	1			
38	Spring Washer (M6)	8			
39	Hex. Recess Bolt (M6 × 1.0 × 40)	8			
40	Waterproof Rubber	1			

Motor and Housing Assembly for EVLK1002, EVLK2501, EVLK1502 and EVLK2502 - Exploded View

Figure 2: Motor and Housing Assembly Drawing (MHP5270)



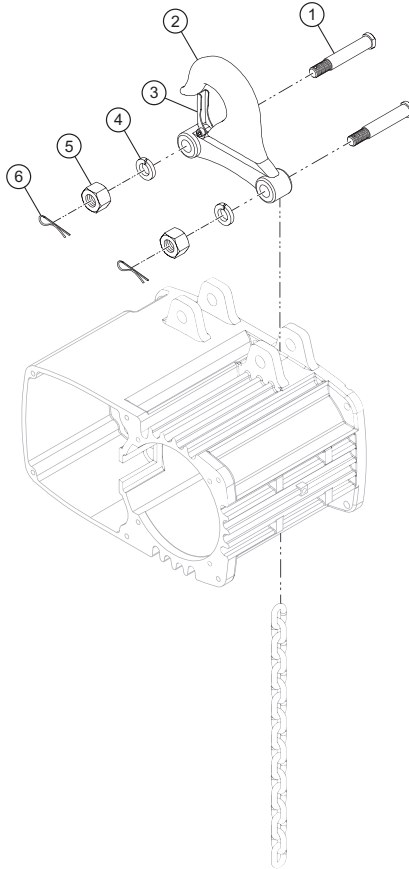
Motor and Housing Assembly - Parts List

Item No.	Part Description	Total Qty.	Part Number (CCN)			
			EVLK1002	EVLK2501	EVLK1502	EVLK2502
1	Cross Headed Screw (M5 × 0.8 × 8)	4				
2	End Cover	1				
3	Motor Rotor	1				
4	Key (7 × 7 × 25L)	1				
5	Oil Seal (Ø 45 × Ø 60 × 8t)	1				
6	Motor Stator Assembly	1				
7	Bearing (6309 ZZ)	1				
8	Hex. Recess Bolt (M8 × 1.25 × 25L)	4				
9	Bearing (6206 2RU)	1				
10	Oil Seal (Ø 30 × Ø 50 × 8t)	1				
11	Motor End Cover	1				
12	Spring Washer (M8)	8				
13	Hex. Recess Bolt (M8 × 1.25 × 30L)	4				
14	Brake Assembly TSB-165-370	1				
15	Spring Washer (M8)	3				
16	Hex. Recess Bolt (M8 × 1.25 × 60L)	3				
17	Retaining Ring (S-24)	1				
18	Oil Seal (VA22)	1				
19	Brake End Cover Gasket	1				
20	Brake End Cover	1				
21	Spring Washer (M6)	4				
22	Hex. Recess Bolt (M6 × 0.8 × 10L)	4				
23	Fan (Ø 165 × Ø 19 odd)	1				
24	Retaining Ring (S-19)	1				
25	Bearing Housing	1				
26	Spring Washer (M8)	4				
27	Hex. Recess Bolt (M8 × 1.25 × 20L)	2				
28	Limit Plate	1				
29	Hex. Recess Bolt (M5 × 0.8 × 10)	7				

Item No.	Part Description	Total Qty.	Part Number (CCN)			
			EVLK1002	EVLK2501	EVLK1502	EVLK2502
30	Spring Washer (M8)	3				
31	Hex. Recess Bolt (M8 × 1.25 × 12L)	2				
32	Limit Switch	1				
33	Limit Cover Gasket	1				
34	Limit Cover	1				
35	Spring Washer (M8)	4				
36	Hex. Recess Bolt (M8 × 1.25 × 16L)	4				
37	Gearbox	1				
38	Gearbox Gasket	1				
39	Parallel Pin (Ø 6 × Ø 15)	2				
40	Gearbox Cover	1				
41	Spring Washer (M8)	9				
42	Hex. Recess Bolt (M8 × 1.25 × 90L)	9				
43	Electric Cover Gasket	1				
44	Electric Cover	1				
45	Spring Washer (M8)	8				
46	Hex. Recess Bolt (M8 × 1.25 × 16L)	8				
47	O-ring (P-25)	1				
48	Cable Fixing Plate	1				
49	Cable Fixing Plate	2				
50	Spring Washer (M6)	2				
51	Hex. Recess Bolt (M6 × 1.0 × 15)	2				
52	Brake Resistance	2				
53	Brake Resistance Holder	1				

Top Hook Assembly for EVLK0501, EVLK1001 and EVLK2001 - Exploded View

Figure 3: Top Hook Assembly Drawing (MHP5271)

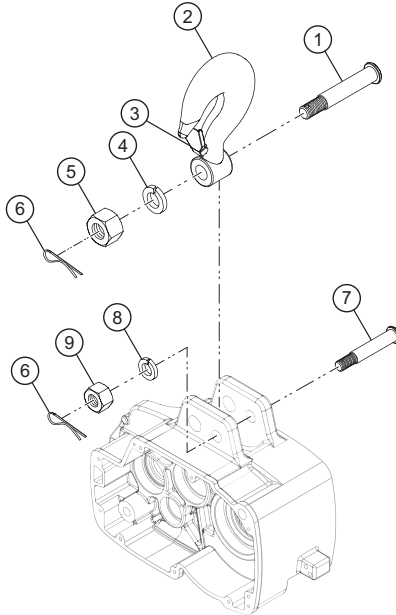


Top Hook Assembly - Parts List

Item No.	Part Description	Total Qty.	Part Number (CCN)		
			EVLK0501	EVLK1001	EVLK2001
1	Lock Bolt (Ø 14 × 83)	2			
2	Top Hook Assembly	1			
3	Safety Latch Assembly	1			
4	Spring Washer (M12)	2			
5	Nut (M12 × 1.75)	2			
6	Cotter Pin (Ø 3 × 30)	2			

Top Hook Assembly for EVLK1002, EVLK2501, EVLK1502 and EVLK2502 - Exploded View

Figure 5: Top Hook Assembly Drawing (MHP5274)



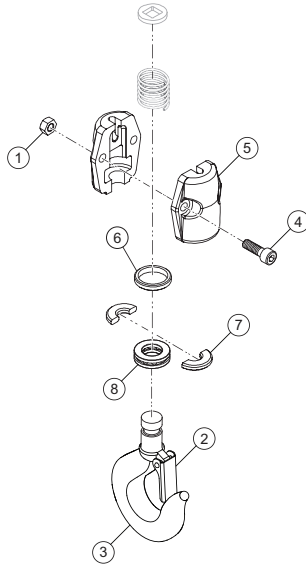
Top Hook Assembly - Parts List

Item No.	Part Description	Total Qty.	Part Number (CCN)			
			EVLK1002	EVLK2501	EVLK1502	EVLK2502
1	Top Hook Pin (Ø 25 × 148L)	1		-		-
	Top Hook Pin (Ø 34 × 148L)		-		-	
2	Top Hook Assembly	1				
3	Safety Latch Assembly	1				
4	Spring Washer (M16)	1		-		-
	Spring Washer (M20)		-		-	
5	Nut (M16 × 1.5)	1		-		-
	Nut (M20 × 2.0)		-		-	
6	Cotter Pin (3/32" × 1"L)	2				
7	Top Hook Pin (Ø34 × 148L)	1				
8	Spring Washer (M8)	1				
9	Nut (M16 × 1.5)	1				

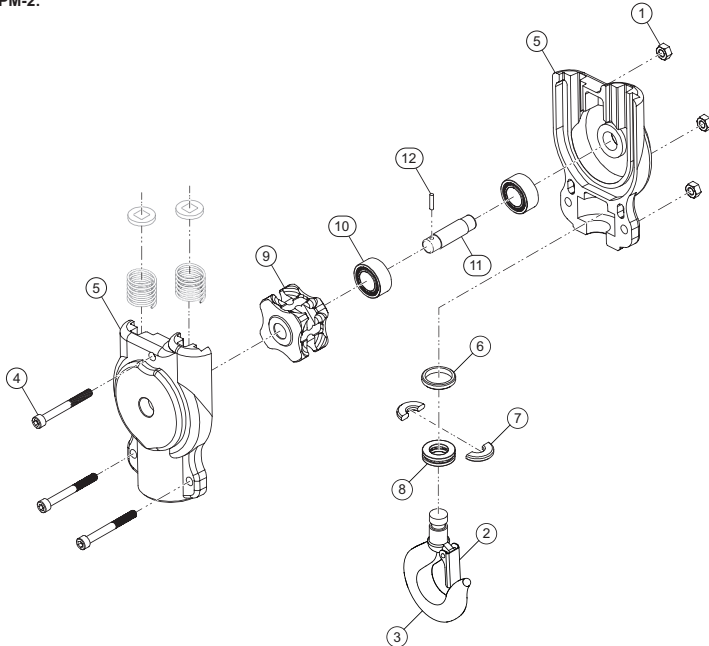
Bottom Hook Assembly for EVLK0501, EVLK1001 and EVLK2001 - Exploded View

Figure 4: Bottom Hook Assembly Drawing (MHP5272)

For 050PM-1 and 100PM-1:



For 200PM-2:



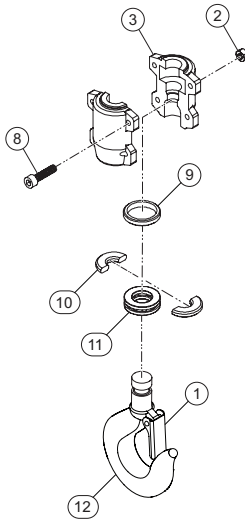
Bottom Hook Assembly - Parts List

Item No.	Part Description	Total Qty.	Part Number (CCN)		
			EVLK0501	EVLK1001	EVLK1002
1	Lock Nut (M8 x 1.25)	[]			
2	Safety Latch Assembly	[]	[1]	[1]	
					[1]
3	Bottom Hook Assembly	[]	[1]	[1]	
					[1]
4	Hex. Recess Bolt (M8 x 1.25 x 30)	2			-
	Hex. Recess Bolt (M8 x 1.25 x 35)	3		-	
5	Bottom Block Cover	1			-
	Bottom Block Cover A				
	Bottom Block Cover B			-	
6	End Spacer	1			-
	End Spacer			-	
7	Half Spacer	2			-
	Half Spacer			-	
8	Thrust Bearing (2904)	1			-
	Thrust Bearing (2905)			-	
9	Sprocket	[]	-	-	[1]
10	Needle Bearing (HK 25/26)	[]	-	-	[1]
11	Sprocket Axle	[]	-	-	[1]
12	Spring Pin (Ø 5 x 16)	[]	-	-	[1]

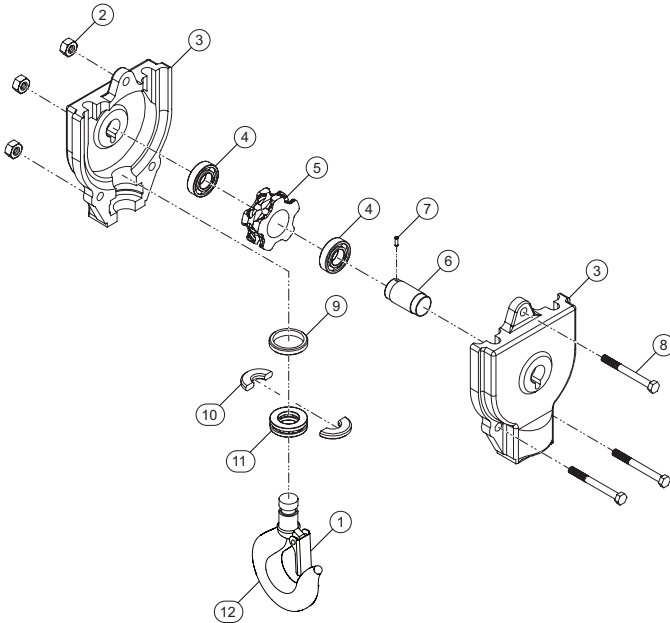
Bottom Hook Assembly for EVLK1002, EVLK2501, EVLK1502 and EVLK2502 - Exploded View

Figure 6: Bottom Hook Assembly Drawing (MHP5275)

For 200PM-1 and 250PM-1:



For 300PM-2 and 500PM-2:

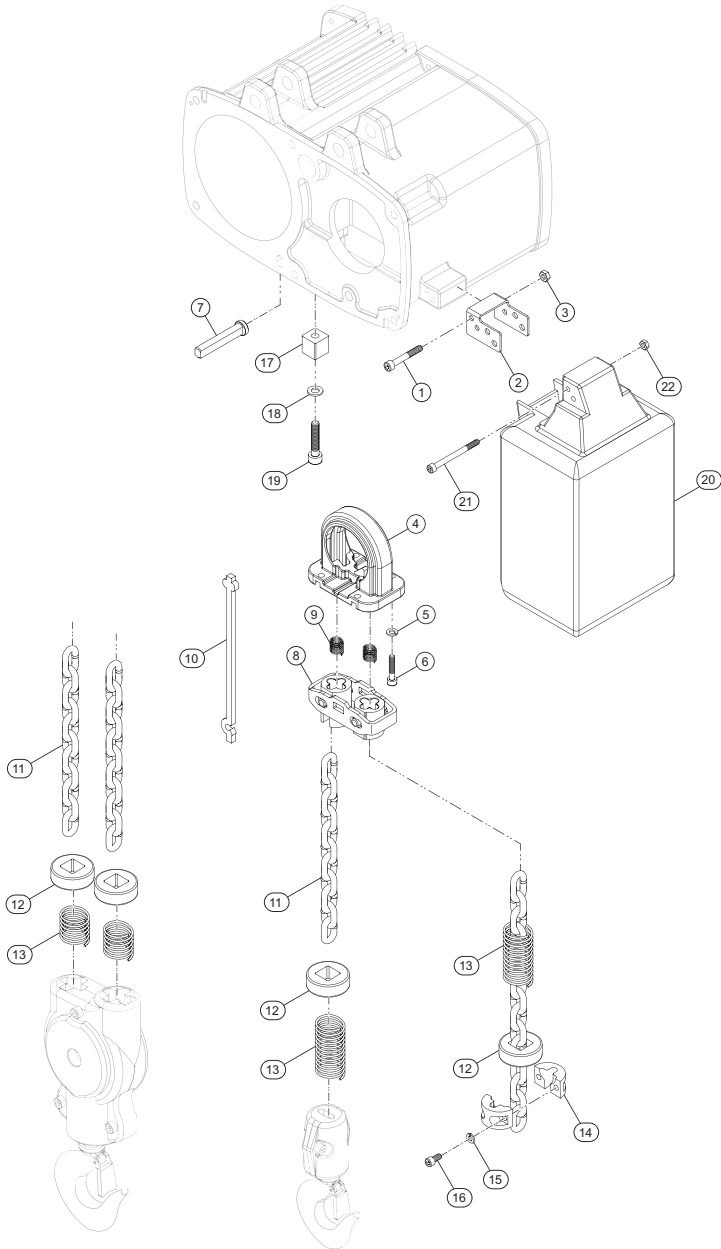


Bottom Hook Assembly - Parts List

Item No.	Part Description	Total Qty.	Part Number (CCN)			
			EVLK1002	EVLK2501	EVLK1502	EVLK2502
1	Safety Latch Assembly	2				
2	Lock Nut (M8 × 1.25)	[]	[4]	-		
	Lock Nut (M10 × 1.5)			[4]	[3]	[3]
3	Bottom Hook Housing	2				
4	Needle Bearing (TA 3020 Z)	[]			[2]	
	Needle Bearing (TA 4025 Z)					[2]
5	Sprocket (Ø 40 × 42L)	[]			[1]	
	Sprocket (Ø 50 × 51L)					[1]
6	Bottom Hook Idle Wheel Axle (Ø 30 × 71L)	[]			[1]	
	Bottom Hook Idle Wheel Axle (Ø 40 × 78L)					[1]
7	Spring Pin (Ø 5 × 16L)	[]			[1]	[1]
8	Hex. Recess Bolt (M8 × 1.25 × 40L)	[]	[4]			
	Hex. Recess Bolt (M10 × 1.5 × 40L)			[4]	[3]	
	Hex. Recess Bolt (M10 × 1.5 × 45L)					[3]
9	Bottom Hook Retaining Ring	[]	[1]	[1]	[1]	
						[1]
10	Bottom Hook Half Spacer	[]	[2]	[2]	[2]	
						[2]
11	Thrust Bearing (51106)	[]	[1]	[1]	[1]	
	Thrust Bearing (51207)					[1]
12	Bottom Hook	[]	[1]			
				[1]		
					[1]	
						[1]

Load Chain Assembly for EVLK0501, EVLK1001 and EVLK2001 - Exploded View

Figure 8: Load Chain Assembly Drawing (MHP5277)

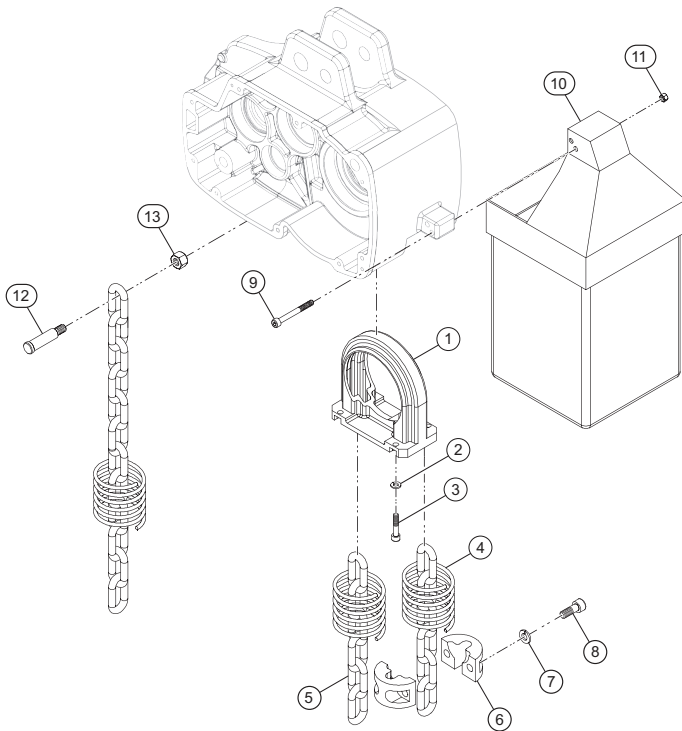


Load Chain Assembly - Parts List

Item No.	Part Description	Total Qty.	Part Number (CCN)		
			EVLK0501	EVLK1001	EVLK2001
1	Hex. Recess Bolt (M5 × 0.8 × 50)	[]	[2]	[2]	
	Hex. Recess Bolt (M5 × 0.8 × 80)				[2]
2	Connect Plate	1			
3	Lock Nut (M5 × 0.8)	2			
4	Chain Regulator	[]			
5	Spring Washer (M6)	4			
6	Hex. Recess Bolt (M6 × 1.0 × 16)	4			
7	Chain Connecting Pin (Ø14 × 30)	[]			
	Chain Connecting Pin (Ø16 × 66)				
8	Guide Tube Assembly	[]			
9	Spring	[]			
10	Substitute Chain (Ø6.3 × 19.1)	[]			
	Substitute Chain (Ø7.1 × 20.2)				
11	Chain (Ø6.3 × 19.1)	[]			
	Chain (Ø7.1 × 20.2)				
12	Limit Stopper Assembly	2			
13	Limit Spring	[]			
	Limit Spring				
14	Chain Stopper	2			
15	Spring Washer (M6)	2			
16	Hex. Recess Bolt (M6 × 1.0 × 20)	2			
17	Fixed Block	1			
18	Spring Washer (M5)	1			
19	Hex. Recess Bolt (M5 × 0.8 × 20)	1			
20	Chain Bucket (NO.3)	1			
21	Hex. Recess Bolt (M6 × 1.0 × 80)	2			
22	Lock Nut (M6 × 1.0)	2			

Load Chain Assembly for EVLK1002, EVLK2501, EVLK1502 and EVLK2502 - Exploded View

Figure 7: Load Chain Assembly Drawing (MHP5276)

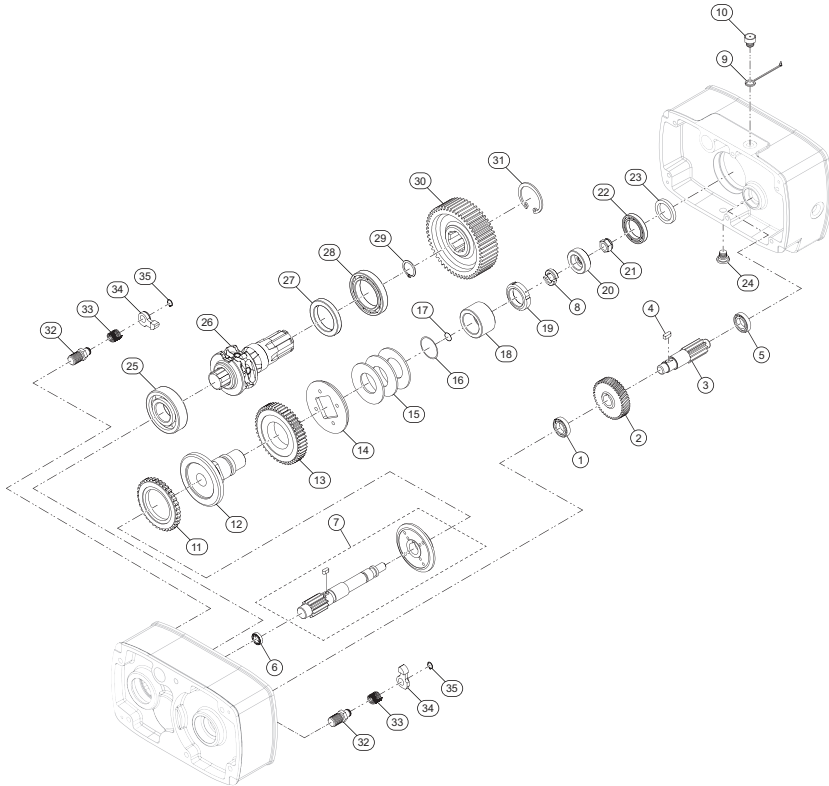


Load Chain Assembly - Parts List

Item No.	Part Description	Total Qty.	Part Number (CCN)			
			EVLK1002	EVLK2501	EVLK1502	EVLK2502
1	Chain Regulator	1				
2	Spring Washer (M8)	4				
3	Hex. Recess Bolt (M8 × 1.25 × 20L)	4				
4	Limit Spring	[]	[2]		[3]	
				[2]		[3]
5	Load Chain (Ø10.0)	[]	[3.8]		[7.6]	
	Load Chain (Ø11.2)			[3.8]		[7.6]
6	Chain Stopper (Ø10)	[]	[2]		[2]	
	Chain Stopper (Ø11.2)			[2]		[2]
7	Spring Washer (M8)	2				
8	Hex. Recess Bolt (M8 × 1.25 × 30L)	2				
9	Hex. Recess Bolt (M8 × 1.25 × 80L)					
10	Chain Bucket	1				
11	Nylon Nut (M8 × 1.25)	2				
12	Chain Connecting Pin (Ø19 × 86L)	[]			[1]	
	Chain Connecting Pin (Ø19 × 86L)					[1]
13	Nylon Nut (M12 × 1.75)	[]			[1]	[1]

Gear Box Assembly for EVLK0501, EVLK1001 and EVLK2001 - Exploded View

Figure 9: Gear Box Assembly Drawing (MHP5279)



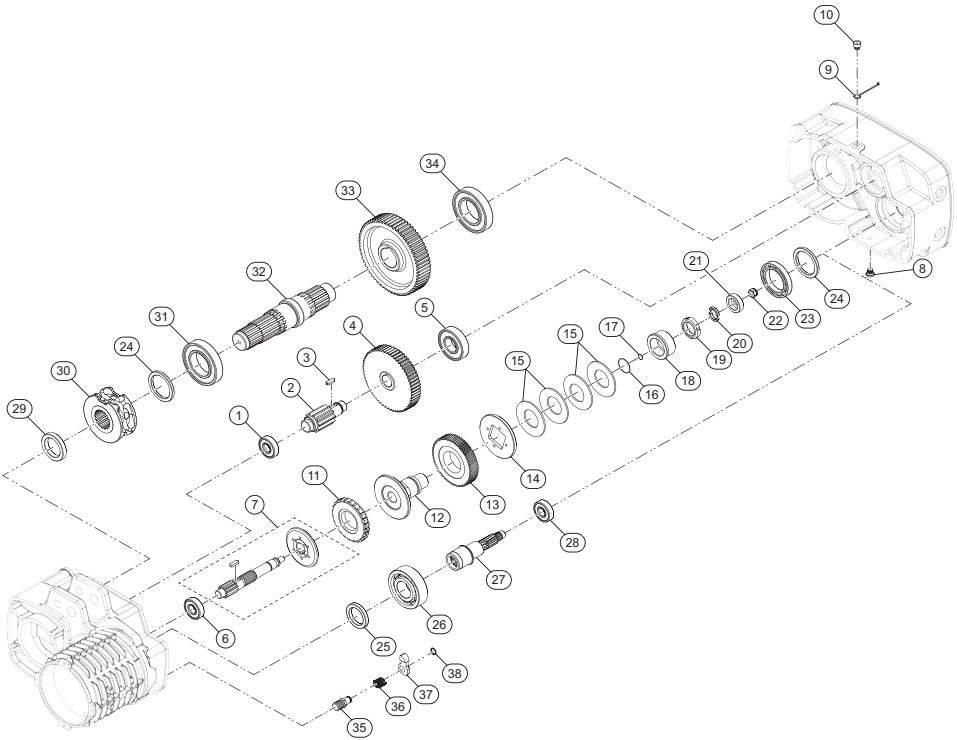
Gear Box Assembly - Parts List

Item No.	Part Description	Total Qty.	Part Number (CCN)		
			EVLK0501	EVLK1001	EVLK2001
1	Bearing (6002 ZZ)	1			
2	2nd Gear (M1.25 × 50T × 14L)	1			
3	3rd Gear (M2 × 12T × 88L)	1			
4	Key (t6 × 6 × 12L)	1			
5	Bearing (6002 ZZ)	1			
6	Bearing (6204)	1			
7	5th Gear Assembly (M2 × 14T)	[]	[1]		
	5th Gear Assembly (M2 × 13T)			[1]	[1]
8	Load Brake Gear Spacer	2			

Item No.	Part Description	Total Qty.	Part Number (CCN)		
			EVLK0501	EVLK1001	EVLK2001
9	Air Plug	1			
10	Hex. Oil Plug	1			
11	Ratchet Assembly	1			
12	Brake Bushing	1			
13	4th Gear Assembly (M2 × 49T)	1			
14	Brake Body (Ø90 × 7.6L)	1			
15	Disc Spring (Ø70 × Ø35.5 × 4t)	3			
16	O-Ring (P-29)	1			
17	O-Ring (P-14)	1			
18	Disc Spring Bushing	1			
19	Nut (YSR M30 × 1.5P-RT)	1			
20	End Spacer (Ø40 × Ø14 × 13L)	1			
21	Lock Nut (M12 × 1.75)	1			
22	Bearing (6910 ZZ)	1			
23	Oil Seal (Ø50 × Ø68 × 9t)	1			
24	Lubricant Drain Bolt	1			
25	Bearing (6006 ZZ)	1			
26	Load Sheave (Ø68.5 × 144L)	[]	[1]		
	Load Sheave (Ø58.5 × 144L)			[1]	[1]
27	Oil Seal (Ø35 × Ø50 × 8t)	1			
28	Bearing (6006 ZZ)	1			
29	Retaining Ring (S-25)	1			
30	6th Gear (M2 × 41T)	[]	[1]		
	6th Gear (M2 × 42T)			[1]	[1]
31	Retaining Ring (R-25)	1			
32	Ratchet Pawl Pin	2			
33	Ratchet Pawl Spring	2			
34	Ratchet Pawl	2			
35	Retaining Ring (S-11)	2			

Gear Box Assembly for EVLK1002, EVLK2501, EVLK1502 and EVLK2502 - Exploded View

Figure 10: Gear Box Assembly Drawing (MHP5280)



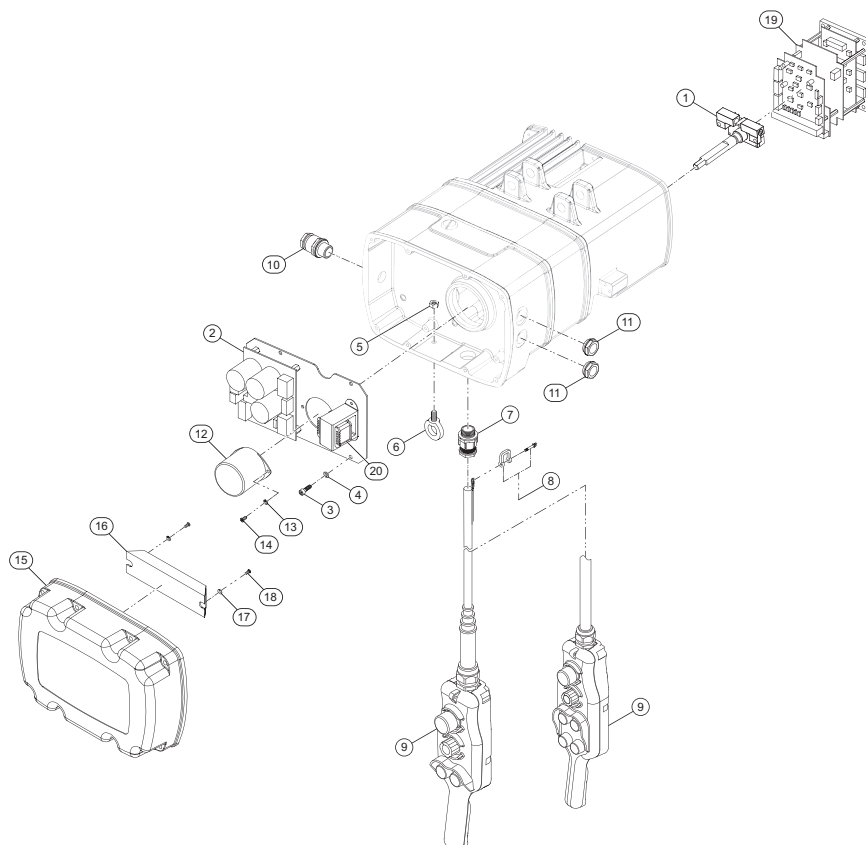
Gear Box Assembly - Parts List

Item No.	Part Description	Total Qty.	Part Number (CCN)			
			EVLK1002	EVLK2501	EVLK1502	EVLK2502
1	Bearing (6307 ZZ)	1				
2	5nd Gear (M3 × 15T × 149.5L)	1				
3	Key (2 × 8 × 30L)	1				
4	4th Gear (M2 × 73T × 32L)	[]	[1]			
	4th Gear (M2 × 68T × 32L)				[1]	
	4th Gear (M2 × 77T × 32L)			[1]		[1]
5	Bearing (NF306)	1				
6	Bearing (6304)	1				

Item No.	Part Description	Total Qty.	Part Number (CCN)			
			EVLK1002	EVLK2501	EVLK1502	EVLK2502
7	3rd Gear Assembly (M2 × 19T × 210)	[]	[1]			
	3rd Gear Assembly (M2 × 24T × 210)				[1]	
	3rd Gear Assembly (M2 × 15T × 210)			[1]		[1]
8	Lubricant Drain Bolt	1				
9	Air Plug	1				
10	Hex. Oil Plug	1				
11	Ratchet Assembly	1				
12	Brake Bushing	1				
13	2nd Gear Assembly (M1.75 × 68T × 24)	1				
14	Brake Body (Ø112 × 8)	1				
15	Disc Spring (Ø90 × Ø45 × 3.5t)	4				
16	O-Ring (P-38)	1				
17	O-Ring (P-18)	1				
18	Disc Spring Bushing	1				
19	Nut (YSR M35 × 1.5P - RT)	1				
20	Load Brake Gear Spacer	2				
21	End Spacer (Ø45 × Ø14 × 13L)	1				
22	Lock Nut (M12 × 1.75)	1				
23	Bearing (6912)	1				
24	Oil Seal (Ø60 × Ø78 × 7t)	2				
25	Oil Seal (Ø45 × Ø60 × 8t)	1				
26	Bearing (6009 ZZ)	1				
27	1st Gear (M1.75 × 12)	1				
28	Bearing (6203 ZZ)	1				
29	Spacer (Ø65 × Ø45 × 12L)	1				
30	Load Sheave	[]	[1]		[1]	
				[1]		[1]
31	Bearing (6212 ZZ)	1				
32	Load Sheave B (Ø70 × 254.5L)	1				
33	6th Gear (M3 × 64T)	1				
34	Bearing (6309 ZZ)	1				
35	Ratchet Pawl Pin	1				
36	Ratchet Pawl Spring	1				
37	Ratchet Pawl	1				
38	Retaining Ring (S-16)	1				

Electric Assembly for EVLK0501, EVLK1001 and EVLK2001 - Exploded View

Figure 11: Electric Assembly Drawing (MHP5281)



Electric Assembly - Parts List

Item No.	Part Description	Total Qty.	Part Number (CCN)		
			EVLK0501	EVLK1001	EVLK2001
1	Upper and Lower Limit Switch	1			
2	PFC Power Supply Assembly	1			
3	Spring Washer (M5)	4			
4	Hex. Recess Bolt (M5 × 0.8 × 10L)	4			
5	Nut (M6 × 1.0)	1			
6	Eye Bolt (M6 × 1.0)	1			

Item No.	Part Description	Total Qty.	Part Number (CCN)		
			EVLK0501	EVLK1001	EVLK2001
7	Cable Gland (M25-18)	1			
8	Shackle (3/16")	1			
9	Push Button Switch	1			
	Push Button Switch (a)				
10	Cable Gland (M20 - 13)	1			
11	Cable Gland (SPG - M20B M20 × 1.5)	2			
12	Cover	1			
13	Spring Washer (M4)	2			
14	Cross Headed Screw (M4 × 0.7 × 6L)	2			
15	Electric Cover	1			
16	Brake Resistance	1			
17	Spring Washer (M4)	2			
18	Cross Headed Screw (M4 × 0.7 × 10)	2			
19	DC Motor Controller Assembly	1			
20	Transformer PS-129	1			

(a) Applicable for Motorized Trolley Only.

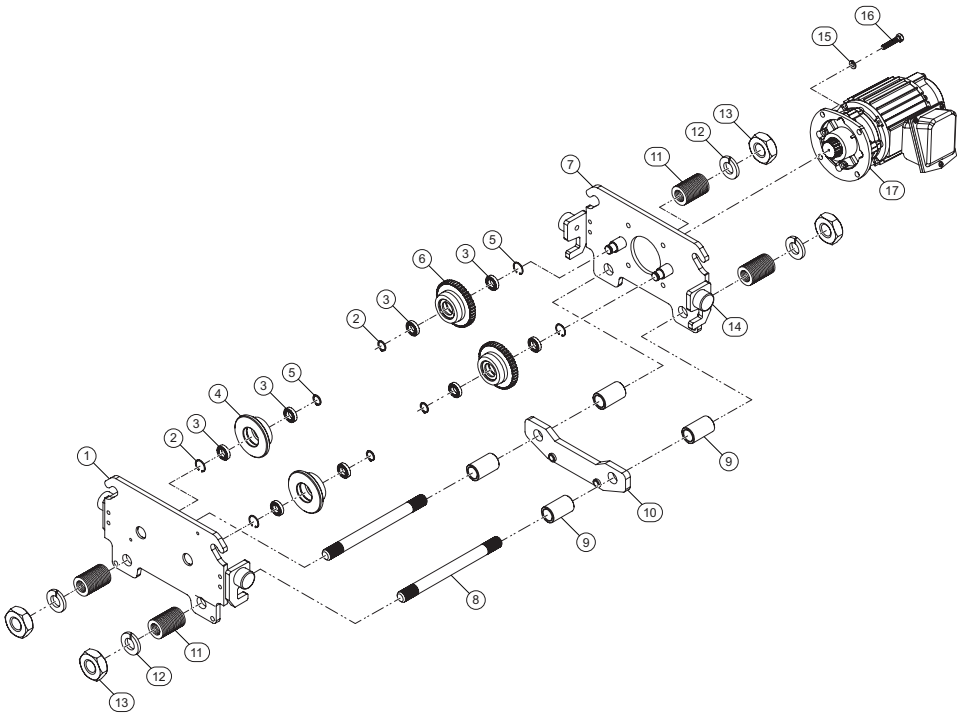
Electric Assembly - Parts List

Item No.	Part Description	Total Qty.	Part Number (CCN)			
			EVLK1002	EVLK2501	EVLK1502	EVLK2502
1	Power Supply Assembly	1				
2	Cable Gland (M32-24)	1				
3	Shackle (3/16")	1				
4	Push Button Switch	1				
	Push Button Switch (a)					
5	Nut (M8 x 1.25)	1				
6	Eye Bolt (M8 x 1.25)	1				
7	Cable Gland (M25-18)	2				
8	Plastic Plug (SPG - M25B M25 x 1.5)	2				
9	Cover	1				
10	Spring Washer (M4)	2				
11	Cross Headed Screw (M4 x 0.7 x 6L)	2				

(a) Applicable for Motorized Trolley Only.

Motorized Trolley Assembly for NT(D)-050-2, NT(D)-050-1, NT(D)-100-2, NT(D)-100-1, NT(D)-200-2 and NT(D)-200-1 - Exploded View

Figure 13: Motorized Trolley Assembly Drawing (MHP5283)



Motorized Trolley Assembly for NT(D)-050-2, NT(D)-050-1, NT(D)-100-2 and NT(D)-100-1 - Parts List

Item No.	Part Description	Total Qty.	Part Number (CCN)			
			NT(D)-050-2	NT(D)-050-1	NT(D)-100-2	NT(D)-100-1
1	Electric Frame Assembly	[]	[1]	[1]		
				[1]	[1]	
2	Retaining Ring (R - 40)	4				
3	Bearing (6203 ZZ)	4				
4	Idler Wheel(Ø88 × 28L)	2				
5	Retaining Ring (S - 17)	4				
6	Drive Wheel (M2 × 46T × 33L)	2				
7	Motor Frame Assembly	[]	[1]	[1]		
				[1]	[1]	

Item No.	Part Description	Total Qty.	Part Number (CCN)			
			NT(D)-050-2	NT(D)-050-1	NT(D)-100-2	NT(D)-100-1
8	Stay Bolt (7/8" x 9UNC x 265L) Beam 75 ~ 125	[]	[2]	[2]		
	Stay Bolt (7/8" x 9UNC x 340L) Beam 75 ~ 210		[2]	[2]		
	Stay Bolt (7/8" x 9UNC x 440L) Beam 75 ~ 310		[2]	[2]		
	Stay Bolt (1" x 8UNC x 265L) Beam 75 ~ 125				[2]	[2]
	Stay Bolt (1" x 8UNC x 355L) Beam 75 ~ 210				[2]	[2]
	Stay Bolt (1" x 8UNC x 450L) Beam 75 ~ 310				[2]	[2]
9	Position Tube (Ø34 x Ø24 x 56L)	4				
10	Load Bracket	[]	[1]			
				[1]		
					[1]	
						[1]
11	Spacer Washer (Ø40 x Ø24 x 1/8") Beam 75 ~ 125	[]	[32]	[32]		
	Spacer Washer (Ø40 x Ø24 x 1/8") Beam 75 ~ 210		[84]	[84]		
	Spacer Washer (Ø40 x Ø24 x 1/8") Beam 75 ~ 310		[148]	[148]		
	Spacer Washer (Ø46 x Ø27 x 1/8") Beam 75 ~ 125				[32]	[32]
	Spacer Washer (Ø46 x Ø27 x 1/8") Beam 75 ~ 210				[84]	[84]
	Spacer Washer (Ø46 x Ø27 x 1/8") Beam 75 ~ 310				[148]	[148]
12	Spring Washer (7/8")	[]	[4]	[4]		
	Spring Washer (1")				[4]	[4]
13	Hex. Nut (7/8" x 9UNC)	[]	[4]	[4]		
	Hex. Nut (1" x 8UNC)				[4]	[4]
14	Bumper	4				
15	Spring Washer (M10)	4				
16	Hex. Head Bolt (M10 x 1.5 x 20L)	4				
17	Motor Assembly (0.16 / 0.04HP)	[]	[1]	[1]		
	Motor Assembly (0.24 / 0.06HP)				[1]	[1]
	Motor Assembly (0.16HP)		[1]	[1]		
	Motor Assembly (0.24HP)				[1]	[1]

Motor Assembly for NT(D)-050-2, NT(D)-050-1, NT(D)-100-2 and NT(D)-100-1 - Parts List

Item No.	Part Description	Specifications (Ø - HZ - V)		Part Number (CCN)	
17	Motor Assembly (0.16 / 0.04HP)	3Ø - 50HZ	380V		
			400V		
			415V		
			Motor Assembly (0.24 / 0.06HP)	380V	
				400V	
				415V	
	Motor Assembly (0.16HP)	3Ø - 50HZ	220V / 380V		
			400V		
			415V		
			Motor Assembly (0.24HP)	220V / 380V	
				400V	
				415V	

Motorized Trolley Assembly for NT(D)-200-2 and NT(D)-200-1 - Parts List

Item No.	Part Description	Total Qty.	Part Number (CCN)	
			NT(D)-200-2	NT(D)-200-1
1	Electric Frame Assembly	1		
2	Retaining Ring (R - 40)	-	---	
3	Bearing (6205 ZZ)	8		
4	Idler Wheel(Ø119 × 49L)	2		
5	Retaining Ring (S - 25)	4		
6	Drive Wheel (Ø130 × 54L)	2		
7	Motor Frame Assembly	1		
8	Stay Bolt (1 1/4" × 7UNC × 335L) Beam 100 ~ 150	2		
	Stay Bolt (1 1/4" × 7UNC × 395L) Beam 100 ~ 225			
	Stay Bolt (1 1/4" × 7UNC × 480L) Beam 100 ~ 310			
9	Position Tube (Ø48 × Ø34 × 69L)	4		

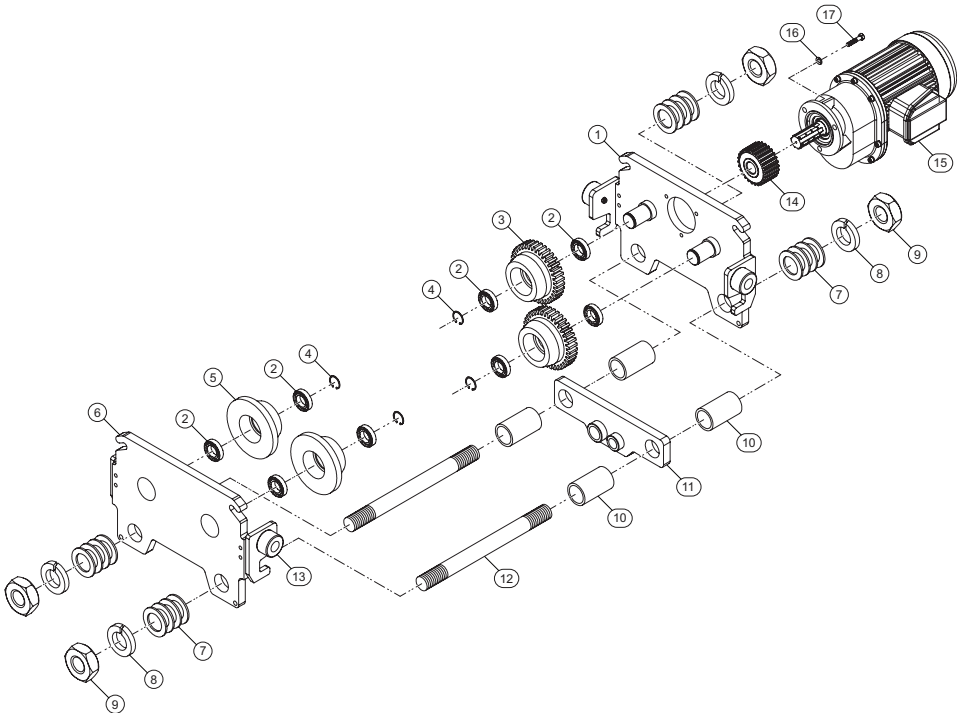
Item No.	Part Description	Total Qty.	Part Number (CCN)	
			NT(D)-200-2	NT(D)-200-1
10	Load Bracket	[]	[1]	
				[1]
11	Spacer Washer (Ø54 × Ø34 × 1/8") Beam 100 ~ 150	32		
	Spacer Washer (Ø54 × Ø34 × 1/8") Beam 100 ~ 225	80		
	Spacer Washer (Ø54 × Ø34 × 1/8") Beam 100 ~ 310	132		
12	Spring Washer (1 1/4")	4		
13	Hex. Nut (1 1/4" × 7UNC)	4		
14	Bumper	4		
15	Spring Washer (M10)	4		
16	Hex. Headed Bolt (M10 × 1.5 × 25L)	4		
17	Motor Assembly (0.5 / 0.13HP)	1		
	Motor Assembly (0.5HP)			

Motor Assembly for NT(D)-200-2 and NT(D)-200-1 - Parts List

Item No.	Part Description	Specifications (Ø - HZ - V)		Part Number (CCN)
17	Motor Assembly (0.5 / 0.13HP)	3Ø - 50HZ	380V	
			400V	
			415V	
	Motor Assembly (0.5HP)		220V / 380V	
			400V	
			415V	

Motorized Trolley Assembly for NT(D)-250-1, NT(D)-300-2 and NT(D)-500-2 - Exploded View

Figure 14: Motorized Trolley Assembly Drawing (MHP5284)



Motorized Trolley Assembly - Parts List

Item No.	Part Description	Total Qty.	Part Number (CCN)		
			NT(D)-250-1	NT(D)-300-2	NT(D)-500-2
1	Motor Frame Assembly	[]	[1]	[1]	[1]
2	Bearing (6207 Z)	8			
3	Drive Wheel (M3.5 x 39T x 67L)	2			
4	Retaining Ring (S - 35)	4			
5	Idler Wheel (Ø143.5 x 59L)	2			
6	Electric Frame Assembly	[]	[1]	[1]	[1]

Item No.	Part Description	Total Qty.	Part Number (CCN)		
			NT(D)-250-1	NT(D)-300-2	NT(D)-500-2
7	Spacer Washer (Ø60 × Ø40 × 1/8") Beam 125 ~ 175	[]	[32]	[32]	
	Spacer Washer (Ø60 × Ø40 × 1/8") Beam 125 ~ 250		[80]	[80]	
	Spacer Washer (Ø60 × Ø40 × 1/8") Beam 125 ~ 310		[152]	[152]	
	Spacer Washer (Ø70 × Ø47 × 1/4") Beam 125 ~ 175	[]			[16]
	Spacer Washer (Ø70 × Ø47 × 1/4") Beam 125 ~ 250				[38]
	Spacer Washer (Ø70 × Ø47 × 1/4") Beam 125 ~ 310				[56]
8	Spring Washer (1 1/2")	[]	[4]	[4]	
	Spring Washer (1 3/4")				[4]
9	Hex. Nut (1 1/2" × 6UNC)	[]	[4]	[4]	
	Hex. Nut (1 3/4" × 5UNC)				[4]
10	Position Tube (Ø50 × Ø40 × 83.5L)	[]	[4]	[4]	
	Position Tube (Ø60 × Ø47 × 83)				[4]
11	Load Bracket	[]	[1]		
				[1]	
					[1]
12	Stay Bolt (1 1/2" × 6UNC × 390L) Beam125 ~ 175	[]	[2]	[2]	
	Stay Bolt (1 1/2" × 6UNC × 485L) Beam125 ~ 250		[2]	[2]	
	Stay Bolt (1 1/2" × 6UNC × 580L) Beam125 ~ 310		[2]	[2]	
	Stay Bolt (1 3/4" × 5UNC × 415L) Beam 125 ~ 175				[2]
	Stay Bolt (1 3/4" × 5UNC × 490L) Beam 125 ~ 250				[2]
	Stay Bolt (1 3/4" × 5UNC × 560L) Beam 125 ~ 310				[2]
13	Bumper	4			
14	Pinion (M3.5 × 16T × 49L)	1			
15	Reducing Gear Motor Assembly (0.8 / 0.2HP)	1			
	Reducing Gear Motor Assembly (0.8HP)				
16	Spring Washer (M8)	3			
17	Hex. Bolt (M8 × 1.25 × 30L)	3			

Motor Assembly - Parts List

Item No.	Part Description	Specifications (Ø - HZ - V)		Part Number (CCN)
15	Reducing Gear Motor Assembly (0.8 / 0.2HP)	3Ø - 50HZ	380V	
			400V	
			415V	
	Reducing Gear Motor Assembly (0.8HP)		380V	
			400V	
			415V	

Notes:

