

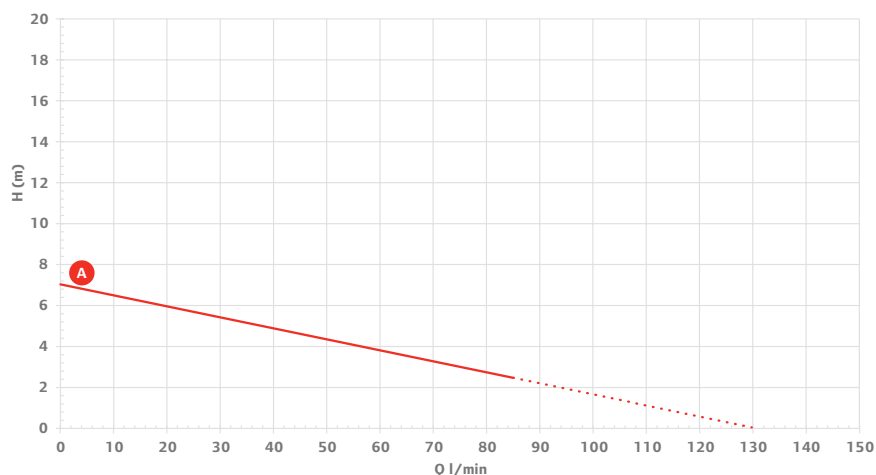
## Basic Set

### Areas of application

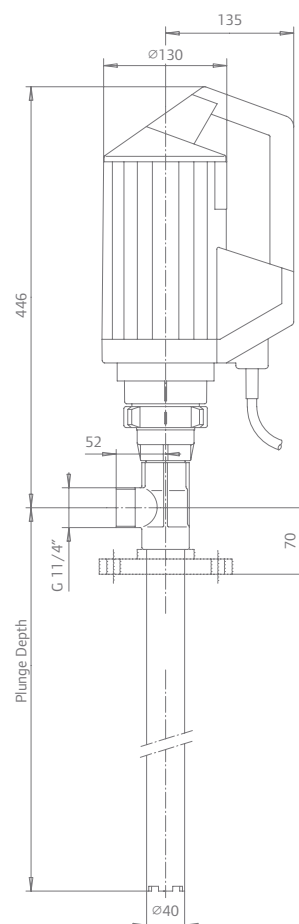
- For short and temporary use
- For low-viscosity, non-flammable liquids, thinned acids and alkalis

### Contents of delivery

- 1 x 520 W Motor
- 1 x 1200 mm PP pump tube with axial impeller, stainless steel drive shaft, and polypropylene barrel adapter
- 1 x Basic set dispense kit which includes DN19 PP nozzle, 2 m DN25 reinforced PVC hose, 2 stainless steel hose clamps and PP hose connector
- 1 x Wall bracket for motor (recommended)



— A (Axial impeller with basic dispense kit)    - - - - (Axial impeller without dispense kit)  
Measurement under ideal conditions without pipe friction resistance. Basis: 1 mPas, 20°C, +/- 10%



Note: Dimensions in mm

### Technical Data

Flow rate	up to 130 l/min
Power	520 W
Voltage	230 V
Plunge depth	1200 mm
Item No.	DE5A3 + 4000-PAS-12 + 637590-B + FHP10007

\*Additional motors and pump tubes available to meet your needs. Contact us for specific application.

### Resistant to, among others:

AdBlue	Adipic acid	Aluminium fluoride
Aluminium oxide	Ammonium hydroxide	Benzoic acid
Boric acid	Calcium hydroxide	Cyanide of copper
Dextrin	Ethylene glycol	Formic acid
Glucose	Glycerine	Iron (II) sulphate
Silicic acid		
Other media on request		