

# OPERATOR'S MANUAL

# 6750X

INCLUDING: INSTALLATION, OPERATION AND PARTS LIST

RELEASED: 03-15-13

REVISED: 02-08-19

(REV. E)

## 67500, 67501, 67502 LOW LEVEL CUTOFF KITS

for RM051S-XXX-XX-B, RM052S-XXX-XX, RM072S-XXX-XX, RM552S-XXX-XX  
and RM552H-XXX-XX RAMS.



**READ THIS MANUAL CAREFULLY BEFORE INSTALLING,  
OPERATING OR SERVICING THIS EQUIPMENT.**

It is the responsibility of the employer to place this information in the hands of the operator. Keep for future reference.  
The original language of this manual is English.

### 67500 for RM052S-XX-XX and RM072S-XXX-XX

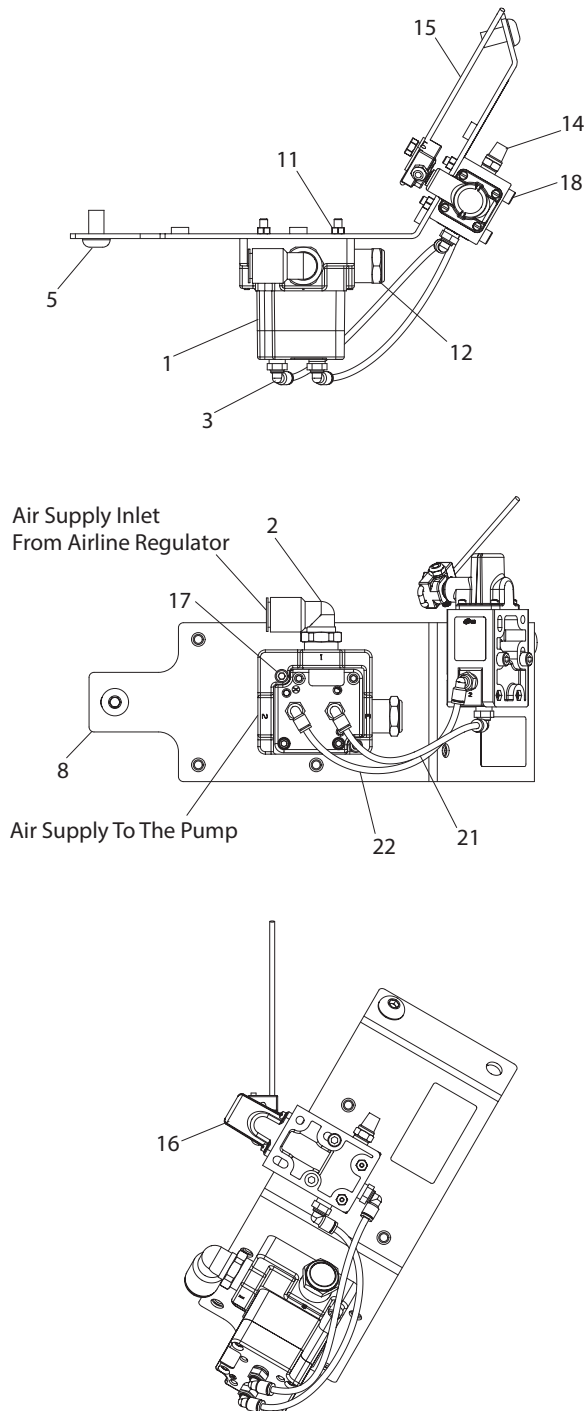


Figure 1

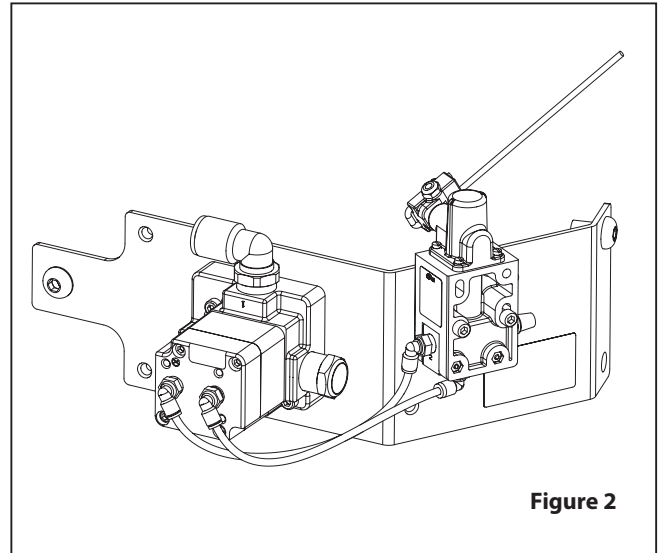


Figure 2

### PART LIST 67500

Item	Description (size)	Qty	Part No.
1	Valve	(1)	H254PS
2	Male Elbow	(1)	59756-362
3	Male Elbow	(4)	59756-4
* 4	Connector	(1)	15233422
5	Button Head Screw	(2)	96696
* 6	Low Level Cut-off Switch Tag	(1)	96788
* 7	Plate, Switch	(1)	96990
8	Bracket Assembly	(1)	97088
* 9	Tubing	(1)	94978-(Ø)
* 10	Clamp	(1)	96125
11	Hex Nut	(4)	16M4JB6B
12	Vent	(1)	20311-4
14	Muffler	(1)	20312-1
15	Lever Rod	(1)	20791
16	Valve, Limit Assembly	(1)	MQ3863
17	Socket Head Cap Screw	(2)	119M2A162B
18	Socket Head Cap Screw (M5 x 45)	(2)	96763164
21	Tubing	(1)	94981-(Ø)
22	Tubing	(1)	94981-(Ø)
* Items included but not shown			
Ø	Bulk Tubing (20" long)	(1)	94978-XXX-X
Ø	Bulk Tubing (7" long)	(1)	94981-XXX-X
Ø	Bulk Tubing (8" long)	(1)	94981-XXX-X

INGERSOLL RAND COMPANY LTD

209 NORTH MAIN STREET -BRYAN, OHIO 43506

① (800) 495-0276 • FAX (800) 892-6276

© 2019

CCN 47497106001

arozone.com

# ARO

**IR** Ingersoll Rand®

## 67501 for RM552S-XXX-XX and RM552H-XXX-XX RAM

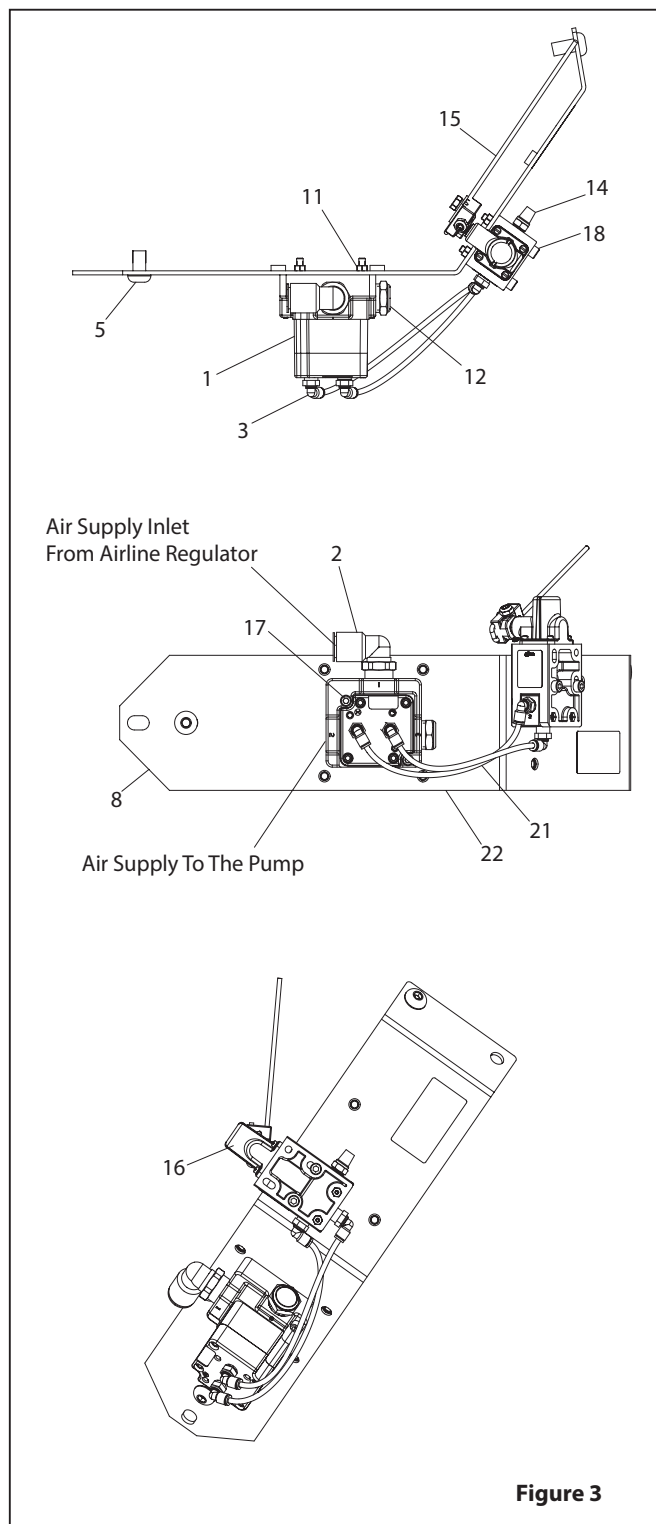


Figure 3

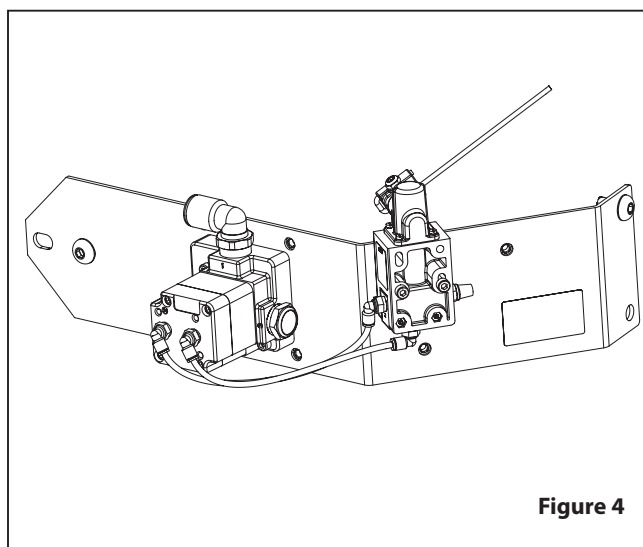


Figure 4

### PART LIST 67501

Item	Description (size)	Qty	Part No.
1	Valve	(1)	H254PS
2	Male Elbow	(1)	59756-362
3	Male Elbow	(4)	59756-4
* 4	Connector	(1)	15233422
5	Button Head Screw	(2)	96696
* 6	Low Level Cut-off Switch Tag	(1)	96788
* 7	Plate, Switch	(1)	96990
8	Bracket Assembly	(1)	67432
* 9	Tubing	(1)	94978-(1)
* 10	Clamp	(1)	96827
11	Hex Nut	(4)	16M4JB6B
12	Vent	(1)	20311-4
14	Muffler	(1)	20312-1
15	Lever Rod	(1)	20791
16	Valve, Limit Assembly	(1)	MQ3863
17	Socket Head Cap Screw	(2)	119M2A162B
18	Socket Head Cap Screw (M5 x 45)	(2)	96763164
21	Tubing	(1)	94981-(2)
22	Tubing	(1)	94981-(2)
*	Items included but not shown		
1	Bulk Tubing (30" long)	(1)	94978-XXX-X
2	Bulk Tubing (7" long)	(1)	94981-XXX-X
2	Bulk Tubing (8" long)	(1)	94981-XXX-X

## 67502 for RM051S-XXX-XX-B RAM

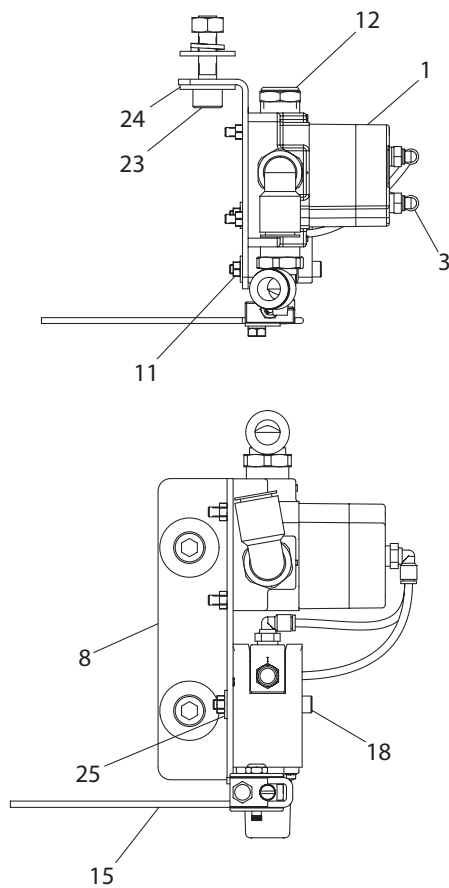


Figure 5

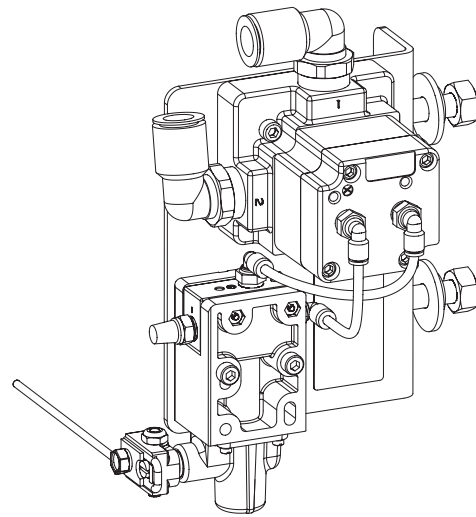


Figure 6

### PART LIST 67502

Item	Description (size)	Qty	Part No.
1	Valve	(1)	H254PS
2	Male Elbow	(2)	59756-362
3	Male Elbow	(4)	59756-4
* 6	Low Level Cut-off Switch Tag	(1)	96788
8	Bracket Mounting	(1)	96991
* 9	Tubing	(1)	94978-(Ø)
11	Hex Nut	(4)	16M4JB6B
12	Vent	(1)	20311-4
14	Muffler	(1)	20312-1
15	Lever Rod	(1)	20791
16	Valve, Limit Assembly	(1)	MQ3863
17	Socket Head Cap Screw	(2)	119M2A162B
18	Socket Head Cap Screw (M5 x 45)	(2)	96763164
21	Tubing	(2)	94981-(Ø)
23	Cap Screw (M10 x 40)	(2)	96775
24	Washer, M10 Fender	(4)	96756
25	Washer	(2)	Y13-3-C
*26	Lock Washer (10.2 mm id)	(2)	9675918
*27	Nut (M10 x 1.5 - 6h)	(2)	96691
*	Items included but not shown		
①	Bulk Tubing (7" long)	(1)	94978-XXX-X
②	Bulk Tubing (5" long)	(1)	94981-XXX-X

## INSTALLATION AND OPERATION

### 67500 OR 67501 KIT INSTALLATION ON RAM

These kits are mounted on the side of the RAM that does not have the Controls (see figure 7, page 5).

1. Remove the front outer Button Head Screw (96696) from the Ram.
2. Attach kit to Ram using (5) Button Head Screws (see figure 7, page 5).
3. Remove the coil hose from the Lock-out Valve on the Ram.
4. Attach the coil hose to the Air Supply Outlet (port#2) on the low level cutoff kit. Other end of coil hose should be connected to pump air motor.
5. Attach the (4) Connector to the Lock-out Valve where the coil hose was attached.
6. Connect the (9) Tubing to the (4) Connector.
7. Connect the other end of the (9) Tubing to the (2) Male Elbow at the Air Supply Inlet (port #1) on the low level cutoff kit.
8. Attach the (15) Lever Rod to the (16) Limit Valve Assembly. Set the (15) Lever Rod to about 30° from horizontal.
9. Attach the (10) Clamp and (7) Switch Plate to the piston rod of the Ram. Locate the (10) Clamp by raising the Ram 2 inches off the plate and set a clearance of 1/4 inch between the (7) Switch Plate and (15) Lever Rod and tighten the clamp.
10. Adjustment of the (15) Lever Rod and (7) Switch Plate may be needed achieve the desired Ram position to turn-off the pump.
11. Lower the Ram to actuate the (16) Limit Valve.
12. Test the setting by turning on the air supply to the assembly. The air motor should remain off.

**⚠ CAUTION** When the Ram is raised and the (15) Lever Rod disengages from the (7) Switch Plate, the air motor will start.

13. To test the operation:
  - a. Set supply pressure to air motor @ 20 psi (1.4 bar) maximum.
  - b. Raise the Ram until the motor starts.
  - c. **DO NOT RUN THE PUMP DRY.**
14. Turn off the air supply to the air motor until you are ready for the pump to run.

### 67502 KIT INSTALLATION ON RAM

This kit is mounted on the Ram head using the (23) Cap Screws that are included with the Kit (see figure 8, page 6).

1. Remove the Cap Screws (96702170) and Washer (96756) that are on the Ram. (Only needed on models SP0443X2XXXXXXX and NP322XX4XR7-XX)
2. Attach Low Level Cutoff assembly to upper bolt pattern of Ram Head (Ref PN 97543-1 on Ram Assembly) using (23) Cap Screws, (24) Washers, (26) Lock Washers, and (27) Nuts (see figure 8, page 6).
3. Remove hose from elbow fitting on Lock-out Valve on Ram. Install Hose into elbow fitting in Air Supply Outlet (port#2) on the low level cutoff kit.
4. Install one end of (9) Tubing into elbow fitting on Lock-out Valve on Ram and install the other end in elbow fitting in Air Supply Inlet (port#1) on the low level cutoff kit.

5. Attach the (15) Lever Rod to the (16) Limit Valve Assembly. Locate the (15) Lever Rod by raising the Ram 2 inches off the plate and set a clearance of 1/4 inch between the (15) Lever Rod and Cap 96752 on Ram.
6. Additional adjustment may be made by loosening (11) Nut and (18) Socket Head Cap Screw and moving (16) Limit Valve up or down.
7. Adjustment of the (15) Lever Rod and (16) Limit Valve may be needed achieve the desired Ram position to turn-off the pump.
8. Lower the Ram to actuate the (16) Limit Valve.
9. Test the setting by turning on the air supply to the assembly. The air motor should remain off.

**⚠ CAUTION** When the Ram is raised and the (15) Lever Rod disengages from the Cap 96752 on Ram, the air motor will start.

10. To test the operation:
  - a. Set supply pressure to air motor @ 20 psi (1.4 bar) maximum.
  - b. Raise the Ram until the motor starts.
  - c. **DO NOT RUN THE PUMP DRY.**
11. Turn off the air supply to the air motor until you are ready for the pump to run.

### OPERATION

1. Turn off the air supply to the pump.
2. Raise the Ram and place a drum of material into position.
3. Lower the Ram and, when ready, turn on the air supply to the pump.
4. As the material is consumed and the Ram lowers, the (15) Lever Rod will engage the (7) Switch Plate or Cap 96752, switching the (16) Limit Valve, removing the air single from port #3 to port #2 and exhausting port #2 to atmosphere thru port #1.
5. When the pressure from port #2 exhausts, (1) Valve shifts and removes the air supply to the pump, turning the pump off.
6. Before raising the Ram, turn off the air supply to the pump to prevent the pump from starting.
7. The position of (15) Lever Rod and (16) Limit Valve will determine when the pump shuts off, but does not control the Ram.
8. Caution should be used when lowering the Ram to prevent damage to (16) Limit Valve.

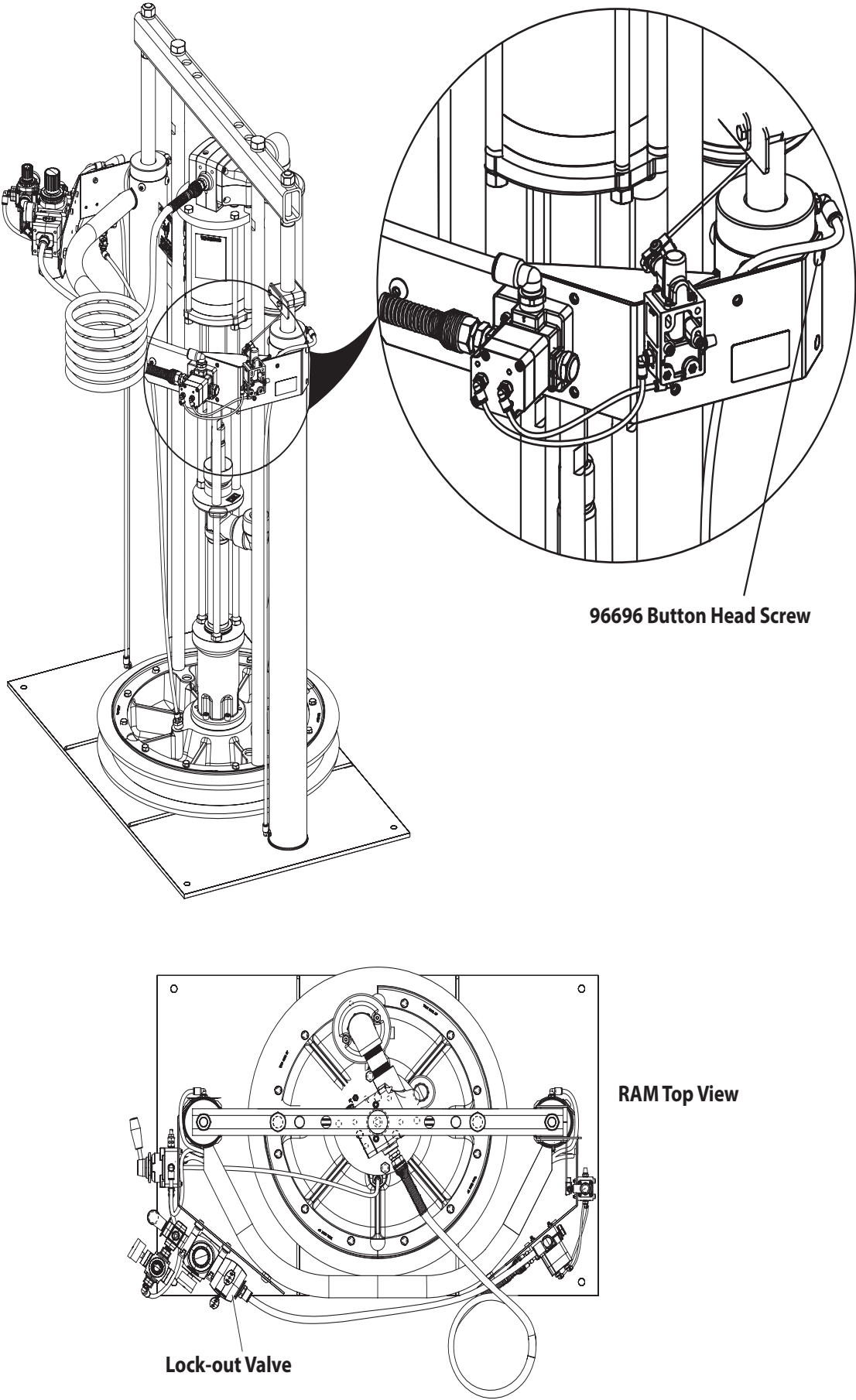


Figure 7

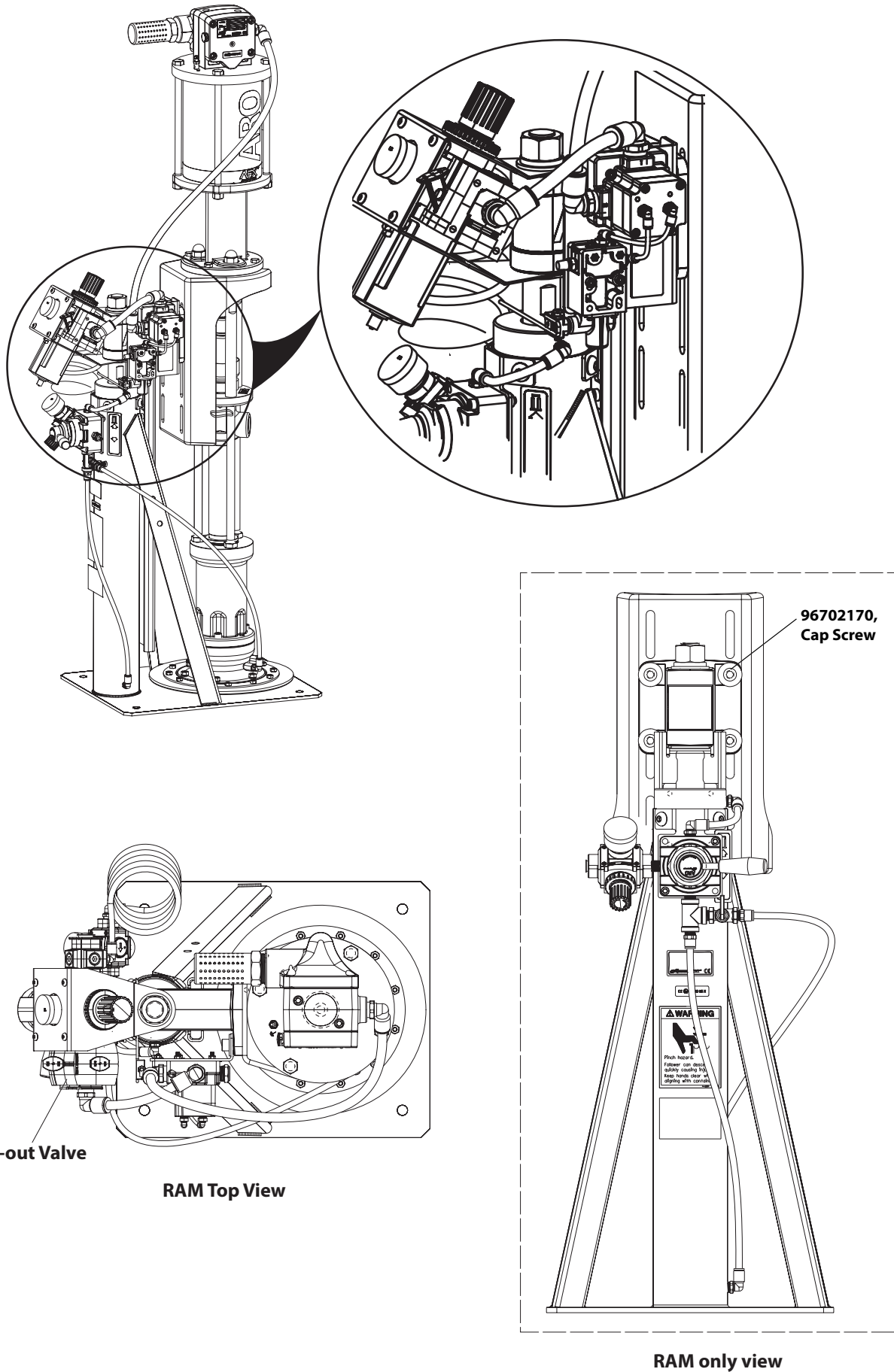


Figure 8



