

Data Sheet

The CF-200 pump is designed for dependable and efficient liquid transfer across a wide range of applications. Built for durability and ease of maintenance, it offers long-lasting performance you can trust.

This model features a close-coupled design compatible with standard NEMA “C” face motors, ensuring straightforward installation and reliable operation. Customers can choose from cast iron, bronze, or aluminum construction to suit specific requirements. Stainless steel fasteners are incorporated to minimize corrosion and extend service life.

A key advantage of the CF-200 is its dynamically balanced impellers, which enhance efficiency and help prolong bearing life for smooth, consistent operation. The standard carbon/ceramic/Viton mechanical seal is self-adjusting and corrosion-resistant, making it suitable for handling a broad spectrum of liquids.

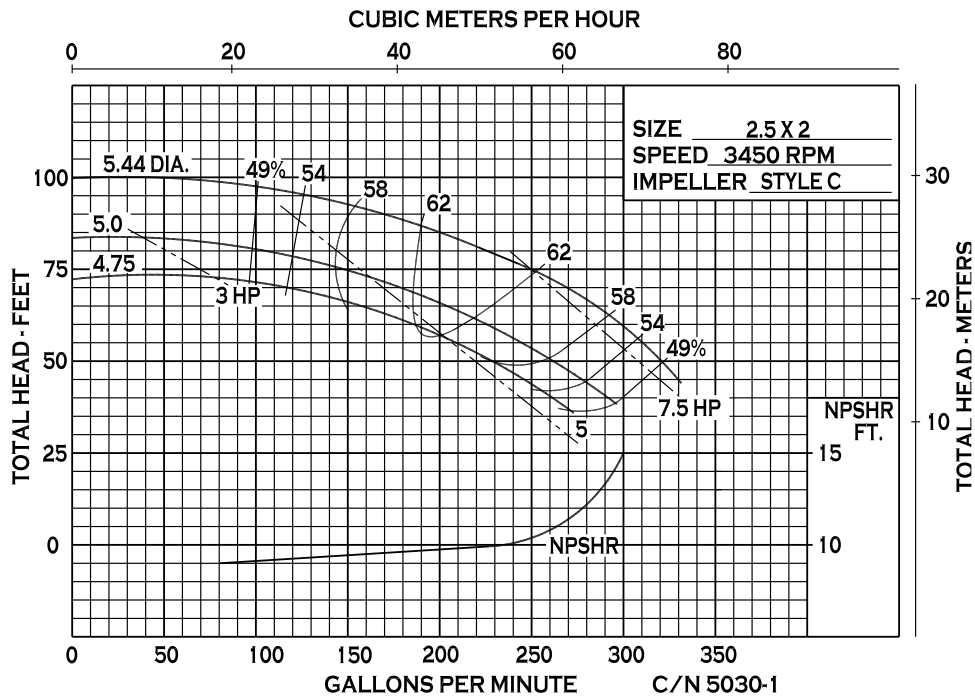
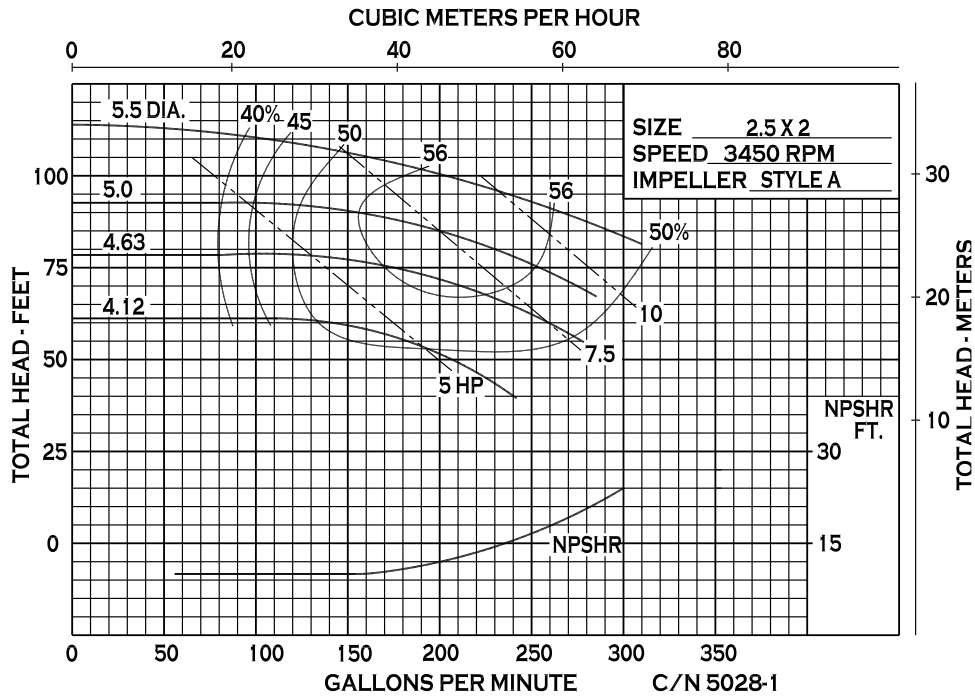
Each pump undergoes rigorous testing and is also available as a “Wet End” PumPAK without a motor, allowing quick mounting to standard NEMA C frame motors. This flexibility makes the CF-200 an excellent choice for agricultural, commercial, industrial, and OEM applications.



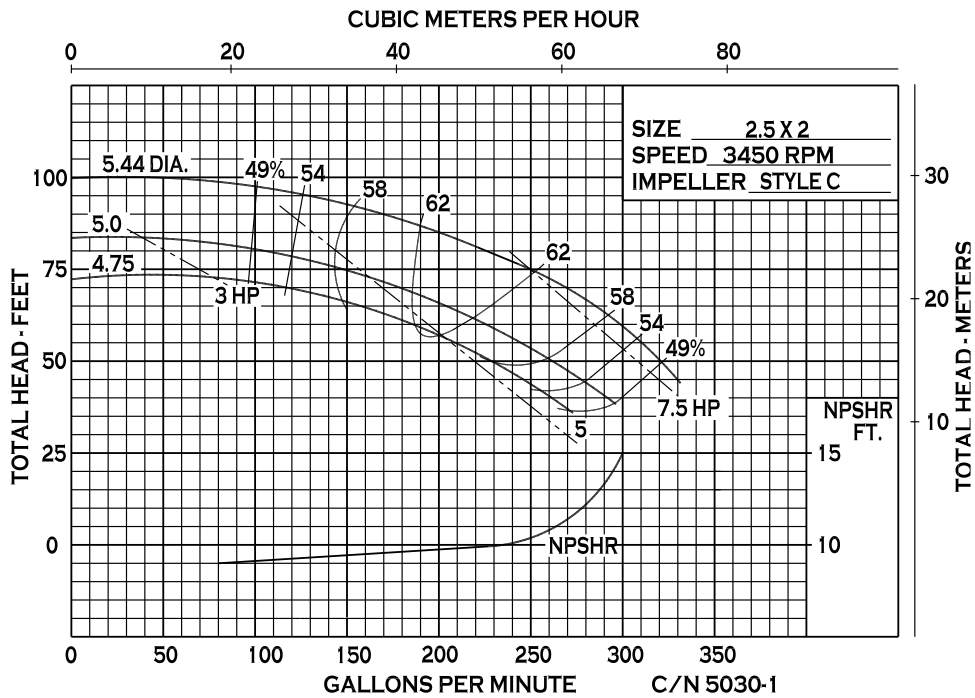
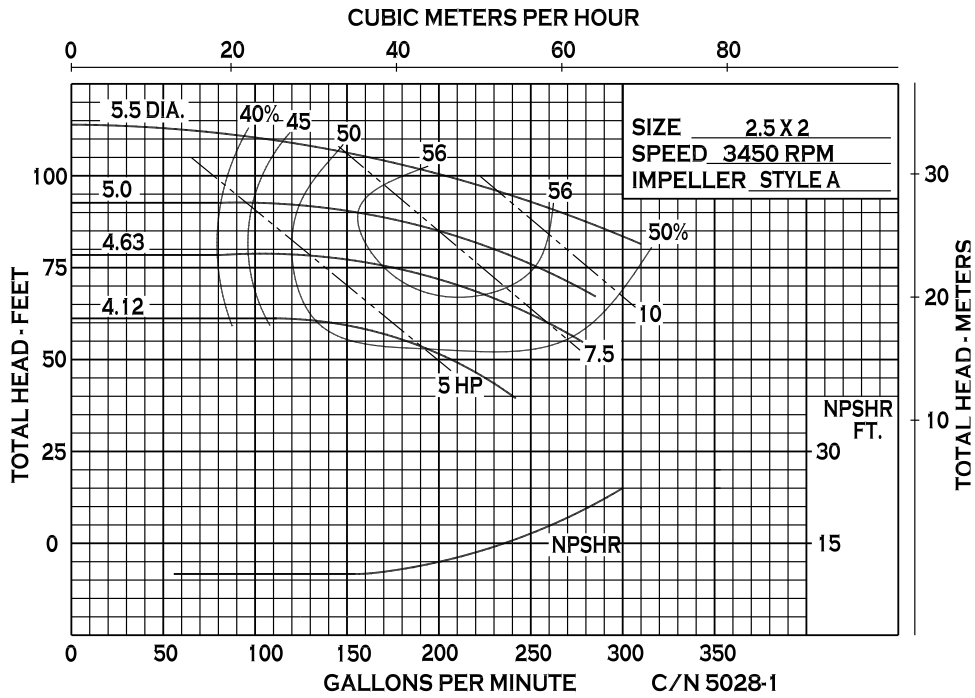
Technical Data

Suction / Discharge	2-1/2" x 2" NPT
Materials of Construction	Bronze, Cast iron
Flow	Up to 300 GPM (68.1 m ³ /h)
Head Feet	Up to 115' (35 m)
Impeller	5.5" (139.7 mm) enclosed cast iron or bronze
Motor	Up to 7.5 HP (5.51 kW)
Seal	Special seal material combinations available (consult factory), Standard carbon / ceramic / Viton
Drive Options	Close coupled 184TC Close coupled 215C Hydraulic motor .73 cu. in. (11.96 cm ³) Engine Drive for 1" shafts Pedestal
Max Solid Size	.6" (15.2 mm)

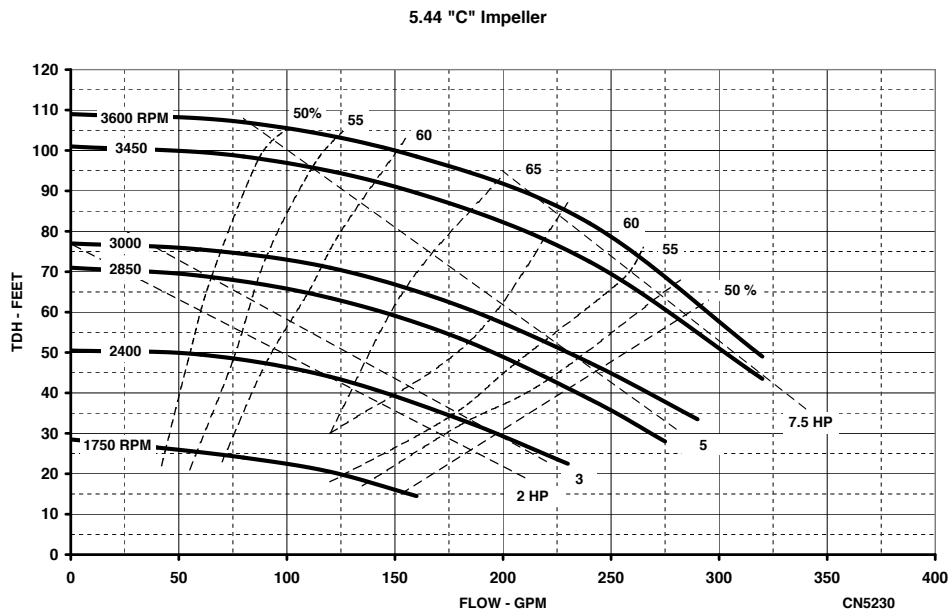
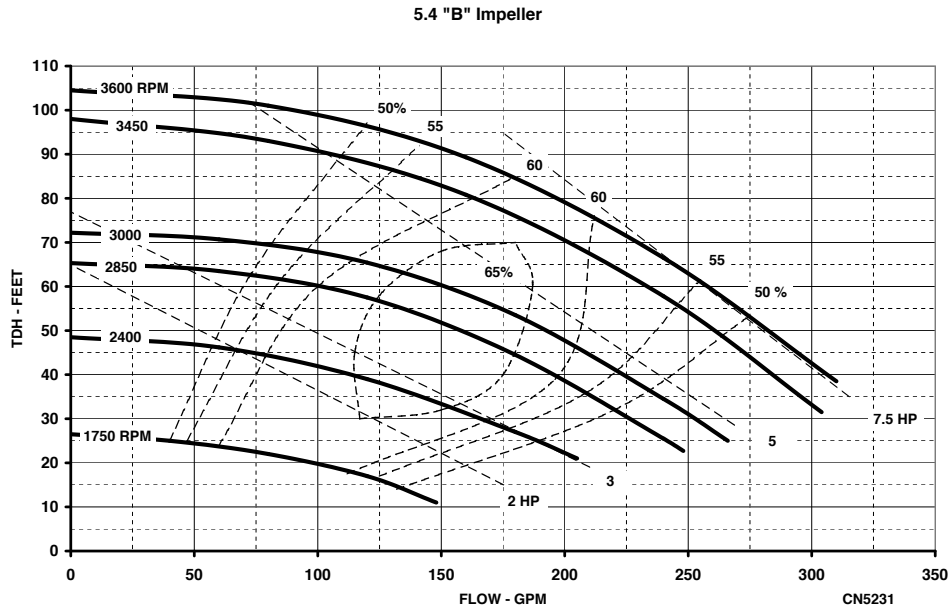
Performance Curves



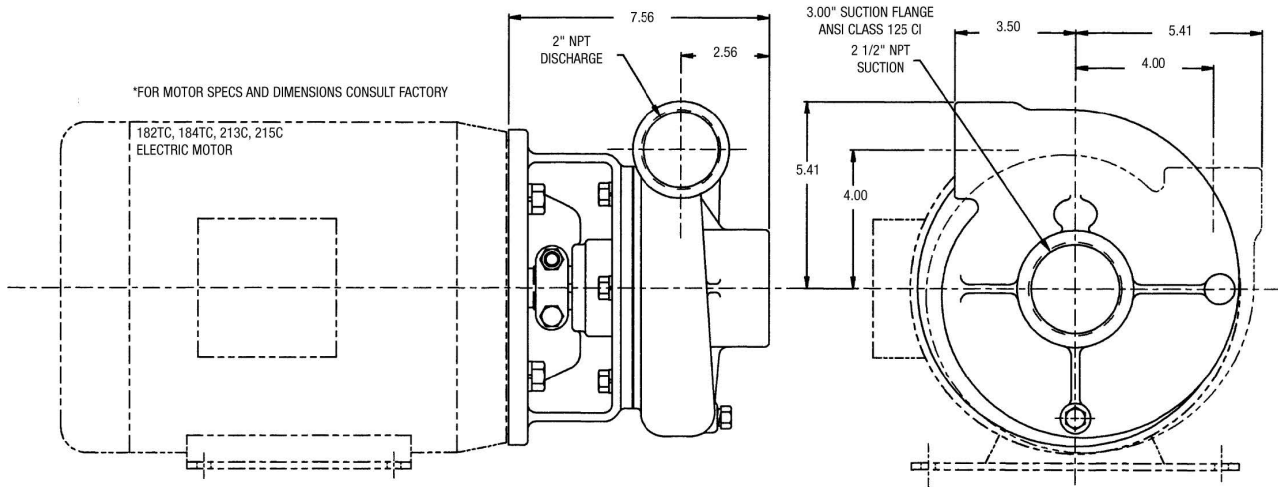
Performance Curves



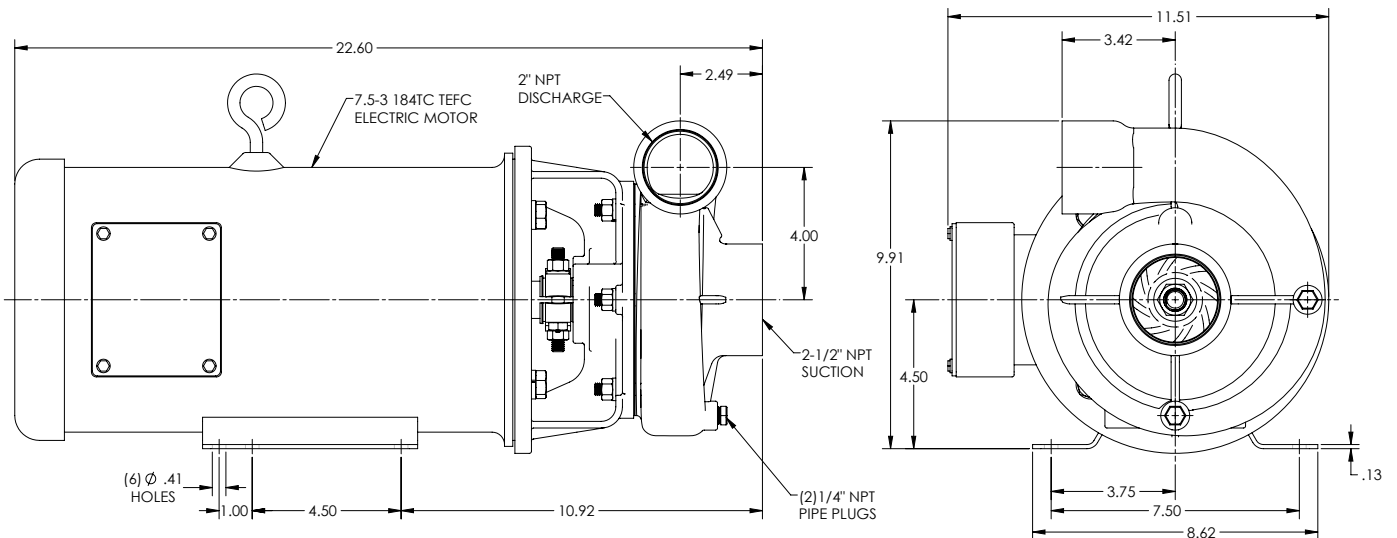
Performance Curves



Dimensions



S200PMP C:7.5-3 184TC 4.62-A (MP22729)



Dimensions

S200 PUMP ASSY. (MP22737)

