

OPERATOR'S MANUAL

2KSBV3-L-000

INCLUDING: OPERATION, INSTALLATION AND MAINTENANCE

RELEASED: 3-28-25
(REV: A)

2KSBV3-L-000 Two-component suction valve



**READ THIS MANUAL CAREFULLY BEFORE INSTALLING,
OPERATING OR SERVICING THIS EQUIPMENT.**

It is the responsibility of the employer to place this information in the hands of the operator. Keep for future reference.

SERVICE KITS

- Always use genuine ARO replacement parts to maintain proper performance and maximize the life of your product.
- SBV3-L-KIT for valve repair.

MODEL DESCRIPTION CHART

2KSBV3 - L - 000	
Two-component suction valve	
Valve Type	
L - Two-component resorbent	

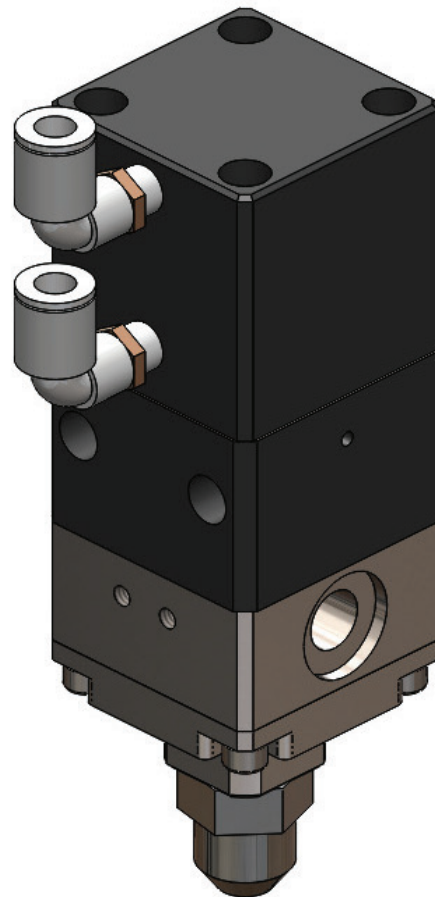
SPECIFICATIONS

Maximum operating pressure .. 200 bar (8.3 bar)
Air operating Pressure..... 72.5 to 101.5 psig (5 - 7 bar)
Inlet Size..... JIC 74° taper seal.
UNF 3/4-16.
Outlet Size..... See Installation Dimensions
Drawing

GENERAL DESCRIPTION

This equipment is used for coating high viscosity fluids (and must be equipped with a one-way metering cylinder or other material conveying component before use). The device acts to cut off the passage of materials in the system, and can achieve precise material coating in conjunction with the other metering and material-conveying components.

2KSBV3-L-000



ARO

209 NORTH MAIN STREET – BRYAN, OHIO 43506

☎ (800) 495-0276 • FAX (800) 892-6276

© 2025

arozone.com

ARO

OPERATING AND SAFETY PRECAUTIONS

NOTICE Use of replacement parts other than genuine ARO parts may result in safety hazards, reduced tool performance, increased repair costs, and will void all warranties.




NOTICE ARO makes no warranty nor accepts implied liability for damages resulting from incorrect use or application of this manual. Liability due to errors in the manual is limited to updating the manual. ARO reserves the right to change the information or procedures in this manual without notice.

NOTICE All programs and manuals are copyrighted. Reproduction without the permission of ARO is prohibited.


NOTICE Contact your nearest ARO dealer to obtain warranty coverage for your equipment.

SAFETY INFORMATION

When installing, using, grounding, maintaining, and repairing the equipment, there will be some warning symbols, the specific meanings of which are shown in the following table:

WARNING	
	Splash hazard High-pressure fluid sprayed from the dispenser, hose leaks and broken parts can pierce the skin. If an accident occurs, seek hospital treatment immediately. <ul style="list-style-type: none">• Never point the dispenser toward people or their body parts.• Do not put your hands near the nozzle.• Do not attempt to stop or redirect a leak with your hands, body, gloves, or rags.• Follow the Pressure Relief Procedure to relieve system pressure before stopping the equipment for cleaning, inspection, or maintenance
	Danger of incorrect use Incorrect use may result in death or serious injury. <ul style="list-style-type: none">• Do not operate the device if fatigued, drinking alcohol, or under the influence of drugs• Do not exceed the Maximum pressure and temperature requirements set by the system• Use fluids and solvents that are compatible with components of the equipment.• Inspect the equipment daily and repair or replace worn or damaged parts with certified replacement parts as soon as possible.• Do not modify or replace the equipment yourself.
	Burn hazard During operation, the surface of the fluid may become very hot. To avoid burns, do not touch the equipment or the heated fluid until it has completely cooled down.

PRESSURE RELIEF PROCEDURE

WARNING	
	INJECTION HAZARD System pressure needs to be relieved to avoid accidental startup. High-pressure fluids can splash onto the skin and cause various kinds injury. To avoid injury from fluid splashing and moving parts, be sure to release system pressure in the following situations: <ul style="list-style-type: none">• When the manual specifically requires pressure relief.• When you stop working• When inspecting or maintaining any system component• When installing and cleaning the nozzle/glue extrusion nozzle

PARTS LIST

Consumable parts	Item No.	Part No.	Description	Quantity	Material
	1	SBV3-001	Manifold block	1	SS
	2	JV2-001	Cylinder Block	2	AL
	3	JV2-015	Connector	4	SS
	4	SEM-044	Hexagon socket screw	8	SS
	5	JV2-014	Hexagon socket screw	8	SS
	6	SBV3-002	Hexagon socket screw	8	SS
	7	SEM-042	Hexagon socket screw	4	SS
	8	JV2-013	Spring Washers	8	C
	9	SEM-039	Spring Washers	20	C
	10	JV2-008	O-Ring	2	R
	11	JV2-005	Pin	4	SS
	12	JV2-002	Cylinder head	2	AL
	13	SBV3-003	Glue inlet	2	SS
	14	SBV3-L-KIT	Spool	2	AS
	15	SBV3-004	Seat	2	SS
	16	SEM-197	O-Ring	4	R
*	17	SBV3-005	O-Ring	2	R
	18	SBV3-006	Plug	4	SS
	19	SBV3-007	Glue dispenser	1	SS
	20	SBV3-008	Adapter	2	SS
	21	SBV3-009	Adapter	2	SS

MATERIAL CODE

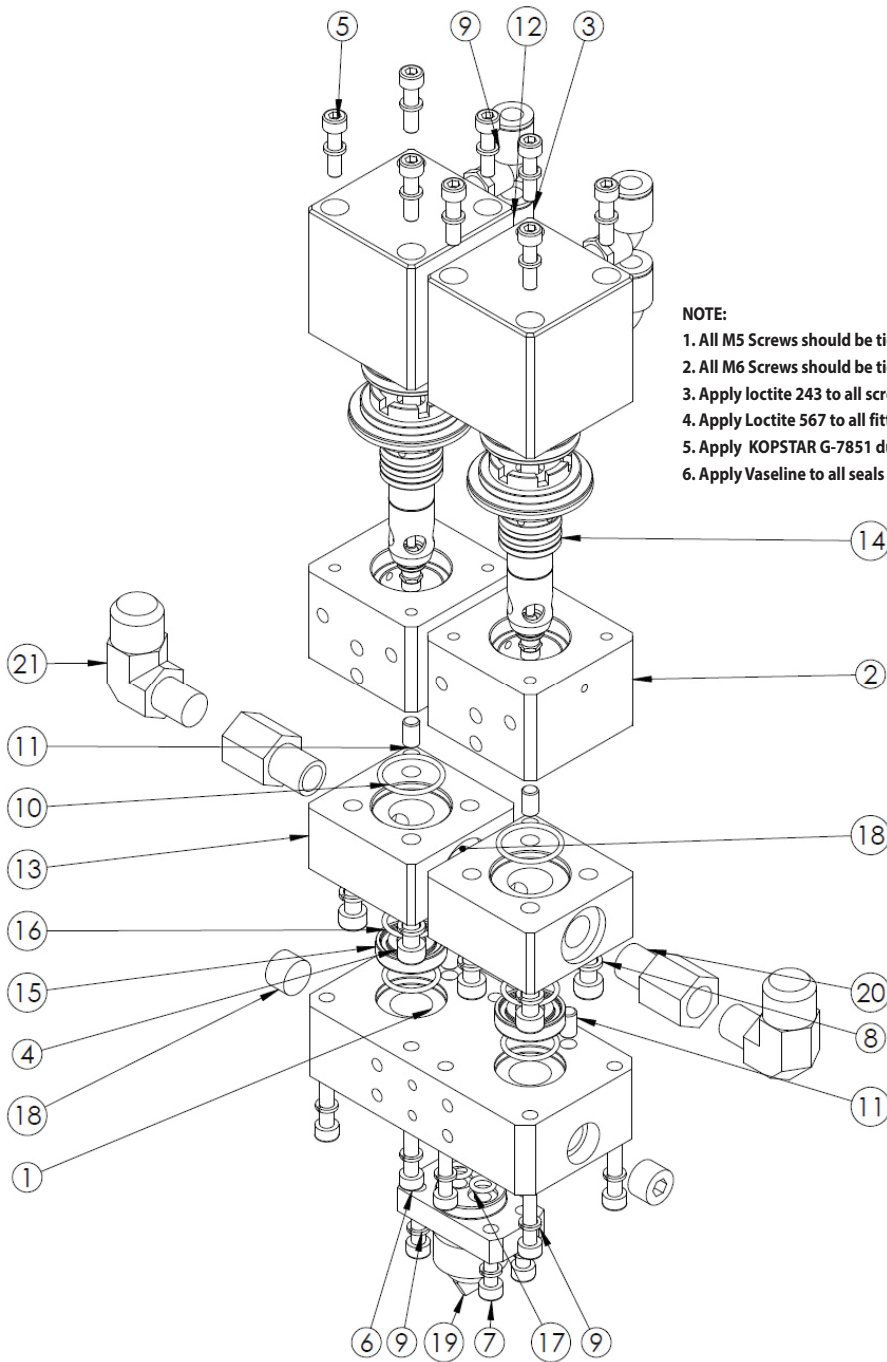
[C]	= Carbon steel	[A]	= Polymer materials
[AL]	= Aluminum	[AS]	= Finished assembly parts
[R]	= Rubber		

- Refer to Figure 1 for installation requirements and removal sequence for glue valve disassembly.

- The parts marked with "*" in the above table are valve repair kits.
- The above repair kits contain single side rubber valve parts only. If you need to repair a double-sided rubber valve, you will need to purchase two repair kits.

PARTS LIST

For the torque, lubrication, and gluing requirements for the installation of all the parts, see the figure below:



NOTE:

1. All M5 Screws should be tightened to torque of 3.2 N-M.
2. All M6 Screws should be tightened to torque of 5.4 N-M
3. Apply loctite 243 to all screw installations.
4. Apply Loctite 567 to all fittings and plugs when installing.
5. Apply KOPSTAR G-7851 during installation of cylinder bore and piston.
6. Apply Vaseline to all seals before assembly.

Figure 1

REPLACEMENT OF CARTRIDGE VALVE CORE

During normal use of a valve, the seals in the cartridge are often the first to fail. In order to facilitate users replacing seals and resuming their use as quickly as possible, the seals of the SBV2 series valves are designed with an integral plug-in structure. The replacement steps are as follows.

DISASSEMBLY OF THE CARTRIDGE VALVE CORE

1. Use an Allen key to remove the four screws on the cylinder head and take off the cylinder head.
2. Remove the cartridge valve.

VALVE RESTORATION

1. Insert the cartridge valve into the cylinder body. It should be noted that the No. 1 and No. 2 O-rings in the figure below cannot be allowed to fall off during installation (You can first install the No. 1 O-ring into the corresponding groove of the cylinder body, remove the No. 2 O-ring, install the cartridge valve core, and then install the No. 2 O-ring).
2. Install the piston seal ring from the repair kit on the piston and insert the piston into the cartridge valve core.
3. Install the spring and limit block, install the cylinder head on the cylinder body, and tighten the screws.

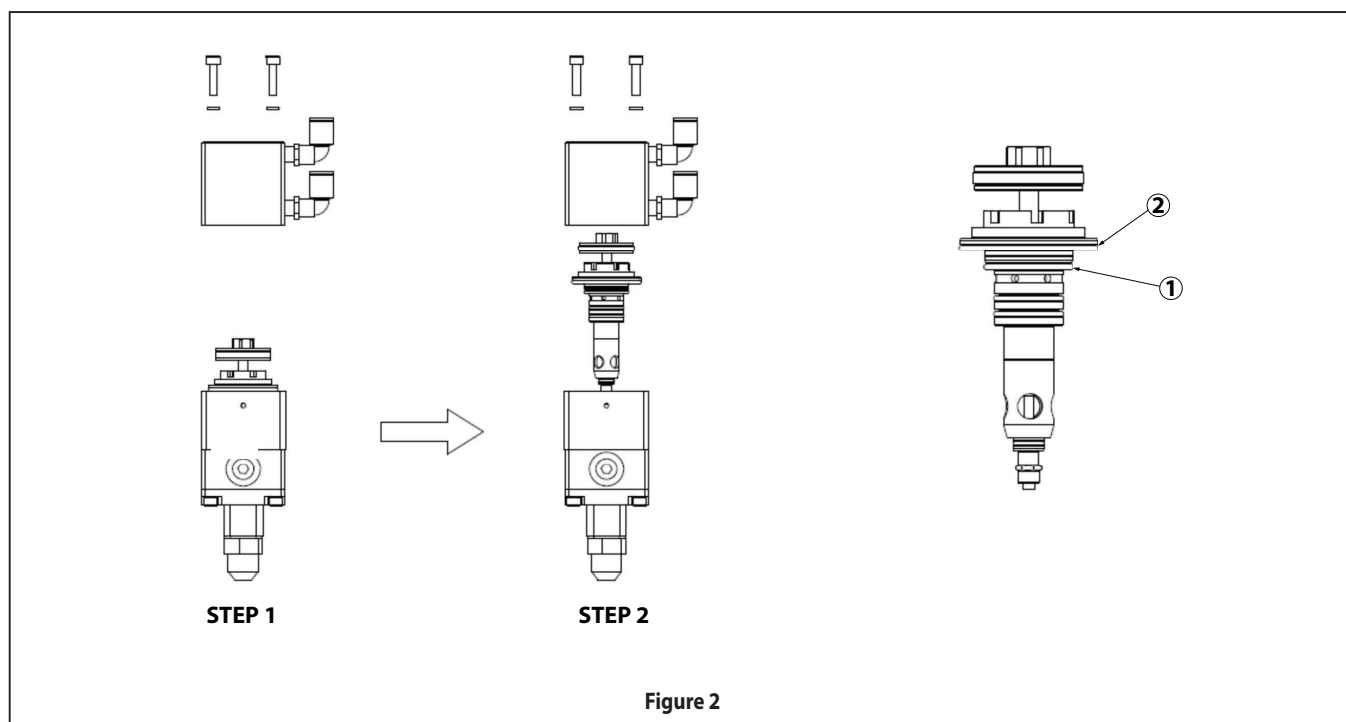


Figure 2

GLUE VALVE TROUBLESHOOTING

Fault manifestation 1: Material seeps out of the observation hole on the side of the valve.

- Solution: Replace the SBV3-L-KIT repair kit.

Fault manifestation 2: Material continues to flow out of the outlet after the valve has been shut off multiple times

- Solution 1: Check whether the control air pipe is inserted in the wrong direction and whether the control valve signal is correct.
- Solution 2: Check whether the air pressure in the control air pipe is too low. The recommended working pressure of the valve is 72.5 to 101.5 psig (5 - 7 bar).
- Solution 3: If points 1 and 2 above have been checked and there are no problems, replace the SBV3-L-KIT maintenance kit.

Fault manifestation 3: There is a sound of air leakage when the solenoid valve controlling the glue valve is not working.

- Solution: Replace the SBV3-L-KIT repair kit.

MAINTENANCE OF THE GLUE VALVE

In principle, the 2KSBV3-L-000 valve does not require any maintenance during normal use.

Whenever the repair kit is replaced, it needs to be assembled according to the assembly requirements in the box in Figure 1.

DIMENSIONAL DATA

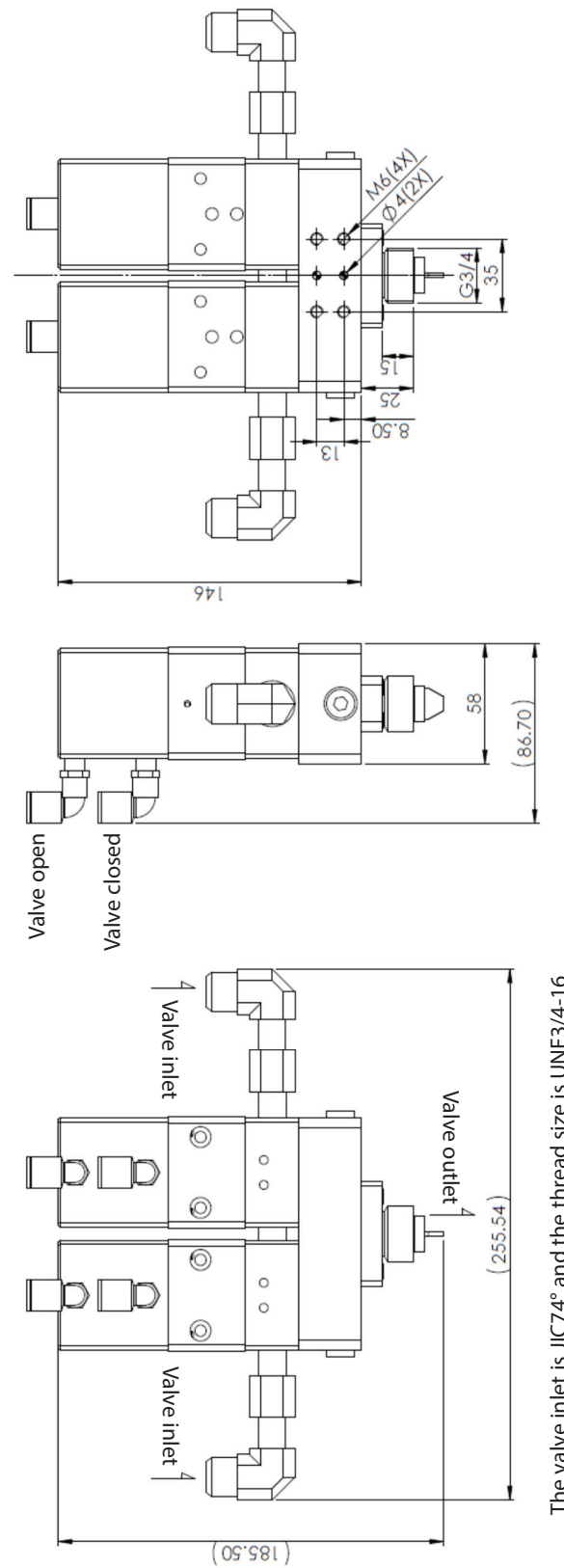


Figure 3

