

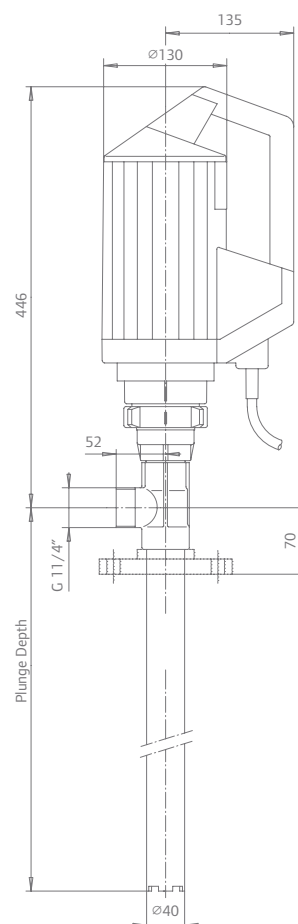
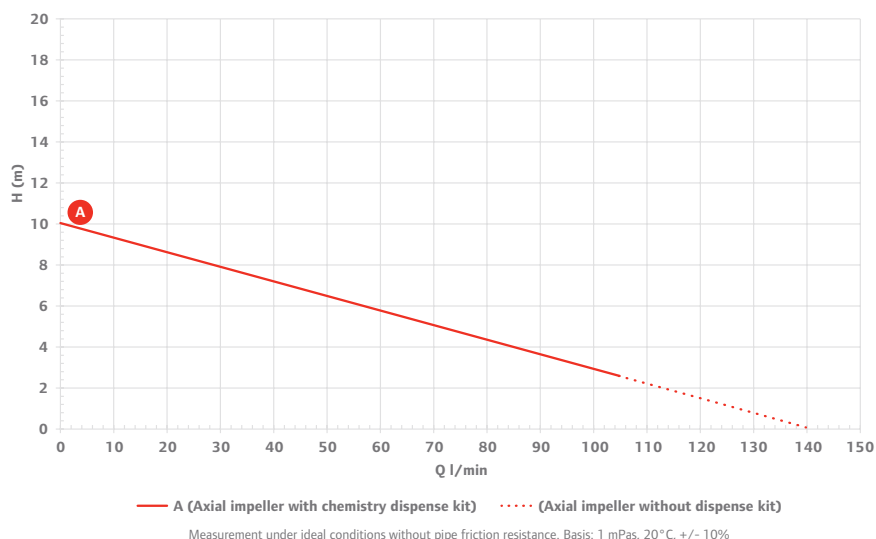
## Chemistry Set

### Areas of application

- For frequent use and long operating times
- For almost all low-viscosity, non flammable chemicals

### Contents of delivery

- 1 x 850 W Motor
- 1 x 1200 mm PVDF pump tube with axial impeller, Hastelloy shaft, and polypropylene barrel adapter
- 1 x Chemical dispense kit which includes DN32 PVDF nozzle, 2 m DN25 universal chemical hose, 2 stainless steel hose clamps and PVDF hose connector
- 1 x Wall bracket for motor (recommended)



Note: Dimensions in mm

### Technical Data

Flow rate	Up to 140 l/min
Power	850 W
Voltage	230 V
Plunge depth	1200 mm
Item No.	DE8A3 + 4000-KAH-12 + 637590-C + FHP10007

\*Additional motors and pump tubes available to meet your needs. Contact us for specific application.

### Resistant to, among others:

Ammonium acetate	Antifreeze (motor vehicle)	Arsenic acid
Battery acid	Benzenesulfonic acid	Bromotrifluoromethane
Calcium bisulphite	Chloroacetic acid	Chromium salts
Dichloroacetic acid	Diesel petrol	Diglycolic acid
Formaldehyde solution	Iron (III) sulphate	Succinic acid
Other media on request		

