

# OPERATOR'S MANUAL

# 651729

INCLUDING: OPERATION, INSTALLATION AND MAINTENANCE.

INCLUDE MANUALS: 253XX-XXX Heavy Duty Air Line Filter-Regulator-Lubricator (pn 103942).

RELEASED: 9-9-94

REVISED: 9-30-15  
(REV. E)

## 651729 Air Manifold Assembly



**READ THIS MANUAL CAREFULLY BEFORE INSTALLING,  
OPERATING OR SERVICING THIS EQUIPMENT.**

It is the responsibility of the employer to place this information in the hands of the operator. Keep for future reference.

① Apply anaerobic pipe sealant to male threads at assembly.

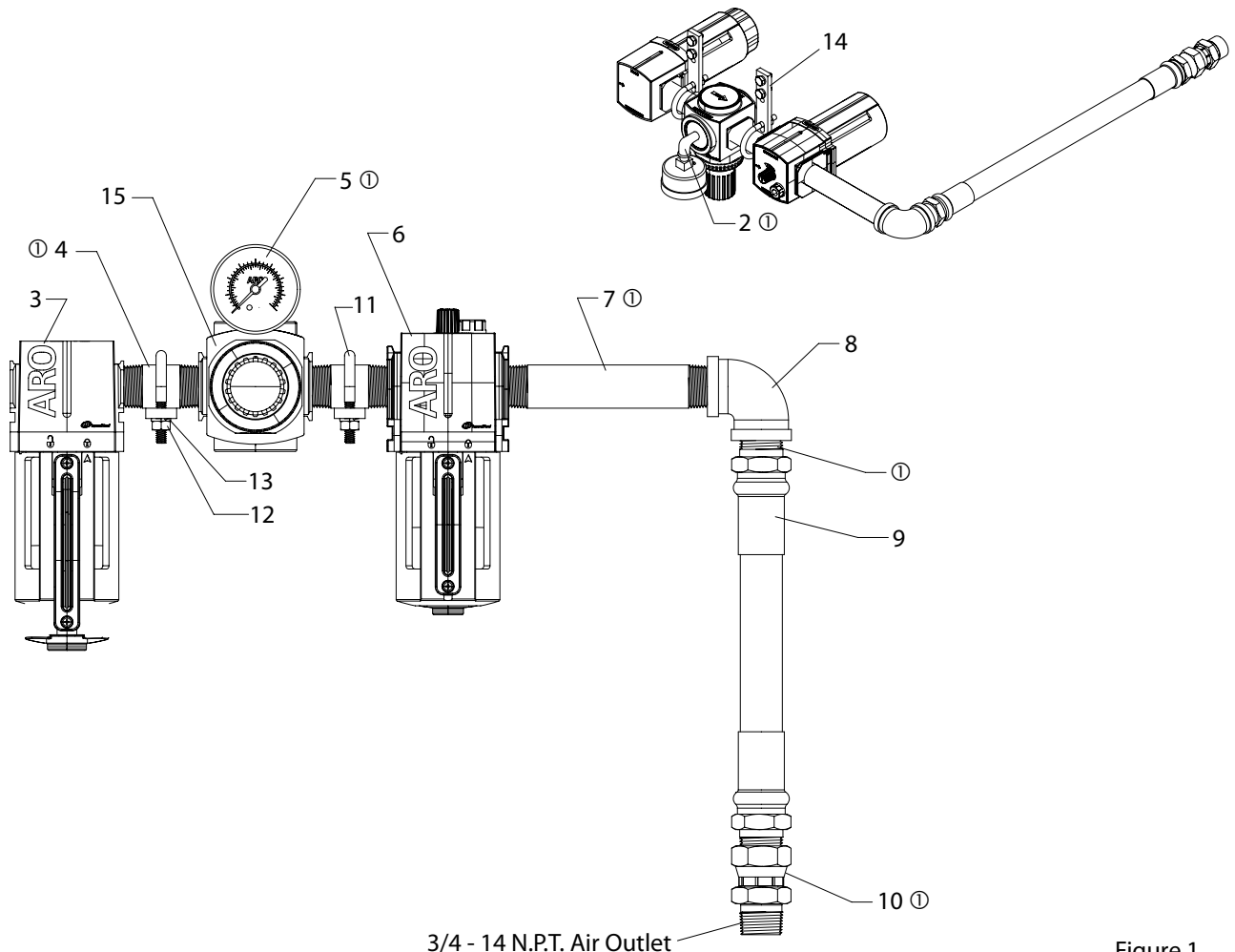


Figure 1

### PARTS LIST

Item	Description (size)	(Qty)	Part No.
2	Street Elbow (1/8 - 27 N.P.T.)	(1)	Y43-1-C
3	Filter	(1)	F35351-420
4	Nipple (3/4 - 14 N.P.T. x 2-1/2")	(2)	Y44-42-C
5	Gauge	(1)	104500
6	Lubricator	(1)	L36351-120
7	Nipple (3/4 - 14 N.P.T. x 5-1/2")	(1)	Y44-48-C
8	Elbow (3/4 - 14 N.P.T.)	(1)	Y43-15-C
9	Hose (3/4 - 14 N.P.T.F. x 1.5 feet)	(1)	622651-1-F

Item	Description (size)	(Qty)	Part No.
10	Swivel	(1)	75367
11	"U" Bolt (1/4" - 20)	(2)	76254
12	Nut (1/4" - 20)	(4)	Y12-4-C
13	Lock Washer (1/4")	(8)	Y14-416
14	Mounting Plate (see figure 2)	(2)	90935
15	Air Regulator	(1)	R37351-100
16	Cap Screw (1/4" - 20 x 5/8") (see figure 3)	(4)	Y6-42-C

## INSTALLATION

1. Position the two (14) mounting plates on the two post lift mounting arm (see figures 2 and 3).
2. Using four (16) cap screws and four (13) lock washers, fasten the mounting plates to the four holes located on the top of the mounting arm.
3. Place the air manifold assembly on the mounting plates and secure using two (11) "U" bolts, four (13) lock washers and four (12) nuts (see figures 1 and 2).

- NOTE: The regulator is rotated upward 90° for easier viewing of (5) gauge.
4. Connect the (9) hose and (10) swivel to the pump air motor inlet.
  5. Connect 1/2" i.d. air line hose to (3) filter.

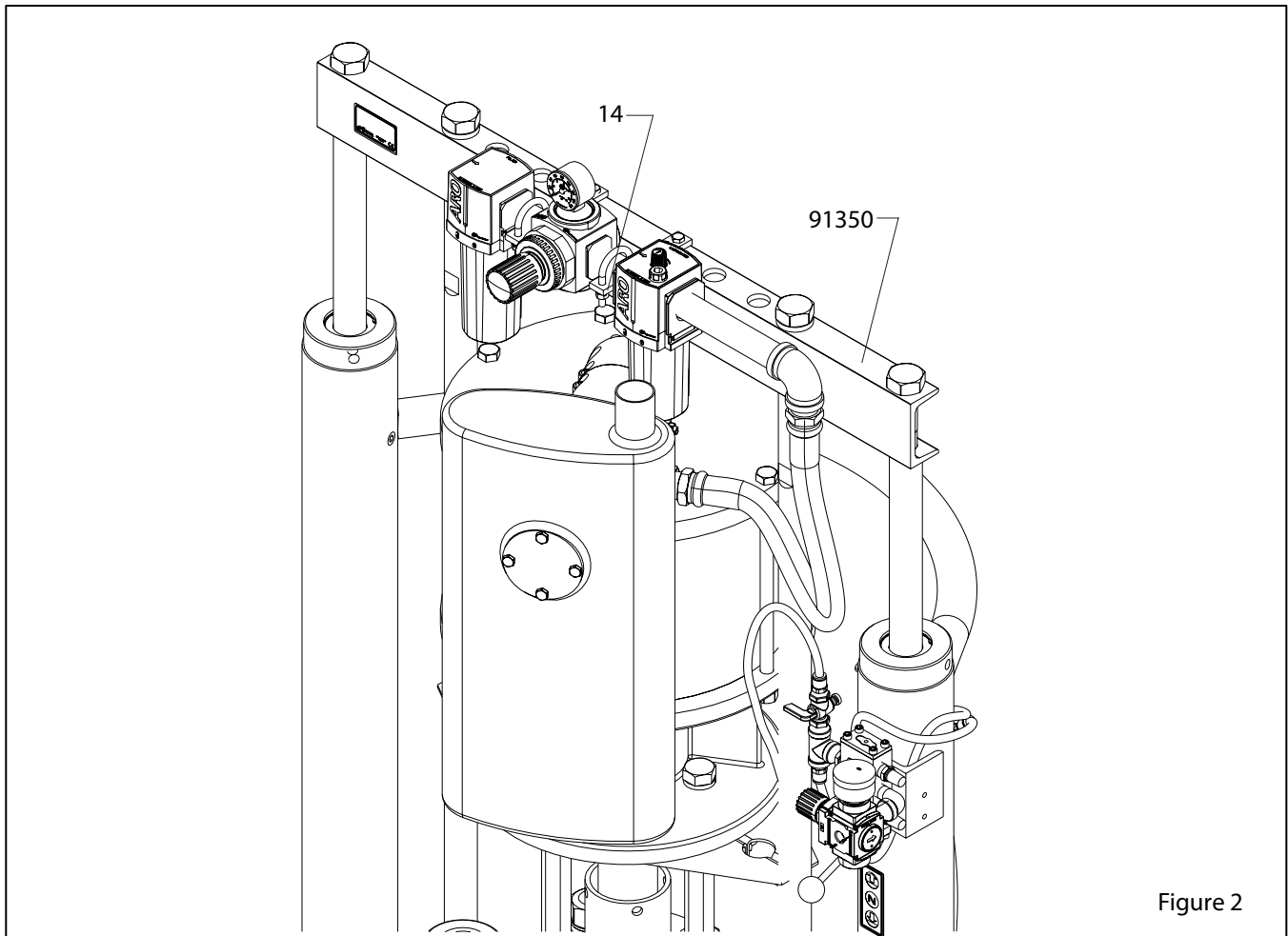


Figure 2

Mounting plate and parts included with assembly (1 mounting bracket shown).

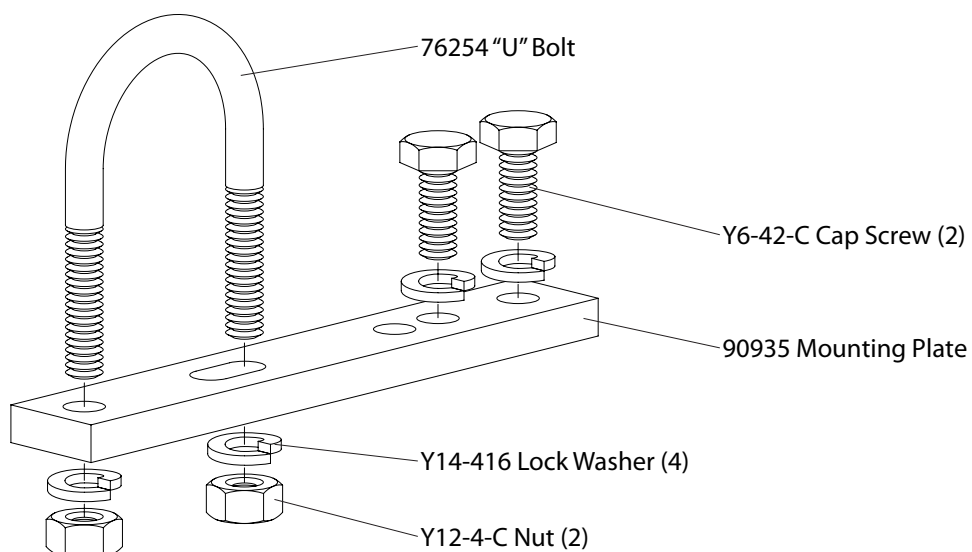


Figure 3