

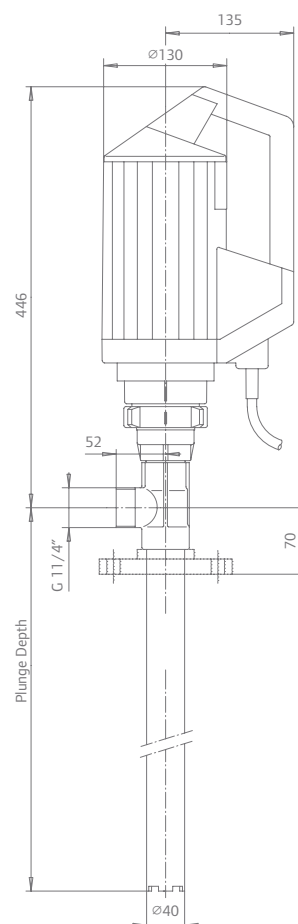
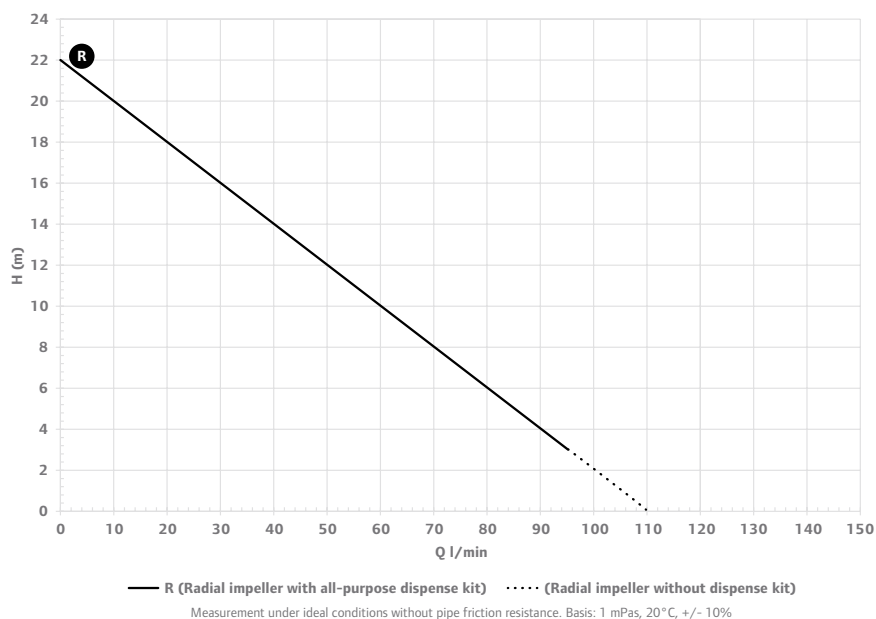
All-Purpose Set

Areas of application

- For frequent use and long operating times
- For concentrated acids and alkalis

Contents of delivery

- 1 x 850 W Motor
- 1 x 1200 mm polypropylene pump tube with radial impeller, Hastelloy shaft, and polypropylene barrel adapter
- 1 x All-around dispense kit which includes DN25 PP nozzle, 2 m DN25 reinforced PVC hose, 2 stainless steel hose clamps and PP hose connector
- 1 x Wall bracket for motor (recommended)



Note: Dimensions in mm

Technical Data

Flow rate	Up to 110 l/min
Power	850 W
Voltage	230 V
Plunge depth	1200 mm
Item No.	DE8A3 + 4000-PRH-12 + 637590-A + FHP10007

*Additional motors and pump tubes available to meet your needs. Contact us for specific application.

Resistant to, among others:

Chloric acid	Copper (II) chloride	Hydrofluoric acid
Iron (III) chloride	Lactic acid	Linseed oil
Magnesium chloride	Oxalic acid	Phosphoric acid
Potassium aluminium sulphate	Sodium borate	Sodium chloride
Sodium hydroxide	Sodium hypochlorite	Sodium sulphate

Other media on request