

OPERATOR'S MANUAL

650534, 650535

INCLUDING: INSTALLATION, OPERATION AND PARTS LIST

RELEASED: 01-25-19

REVISED: 11-22-19

(REV: B)

650534 5 - GAL SINGLE POST RAM ASSEMBLY W/CROSS-OVER SYSTEM

650535 55 - GAL TWO POST RAM ASSEMBLY W/CROSS-OVER SYSTEM



**READ THIS MANUAL CAREFULLY BEFORE INSTALLING,
OPERATING OR SERVICING THIS EQUIPMENT.**

It is the responsibility of the employer to place this information in the hands of the operator. Keep for future reference.
The original language of this manual is English.

650534 5-GAL SINGLE POST RAM ASSEMBLY W/CROSS-OVER SYSTEM

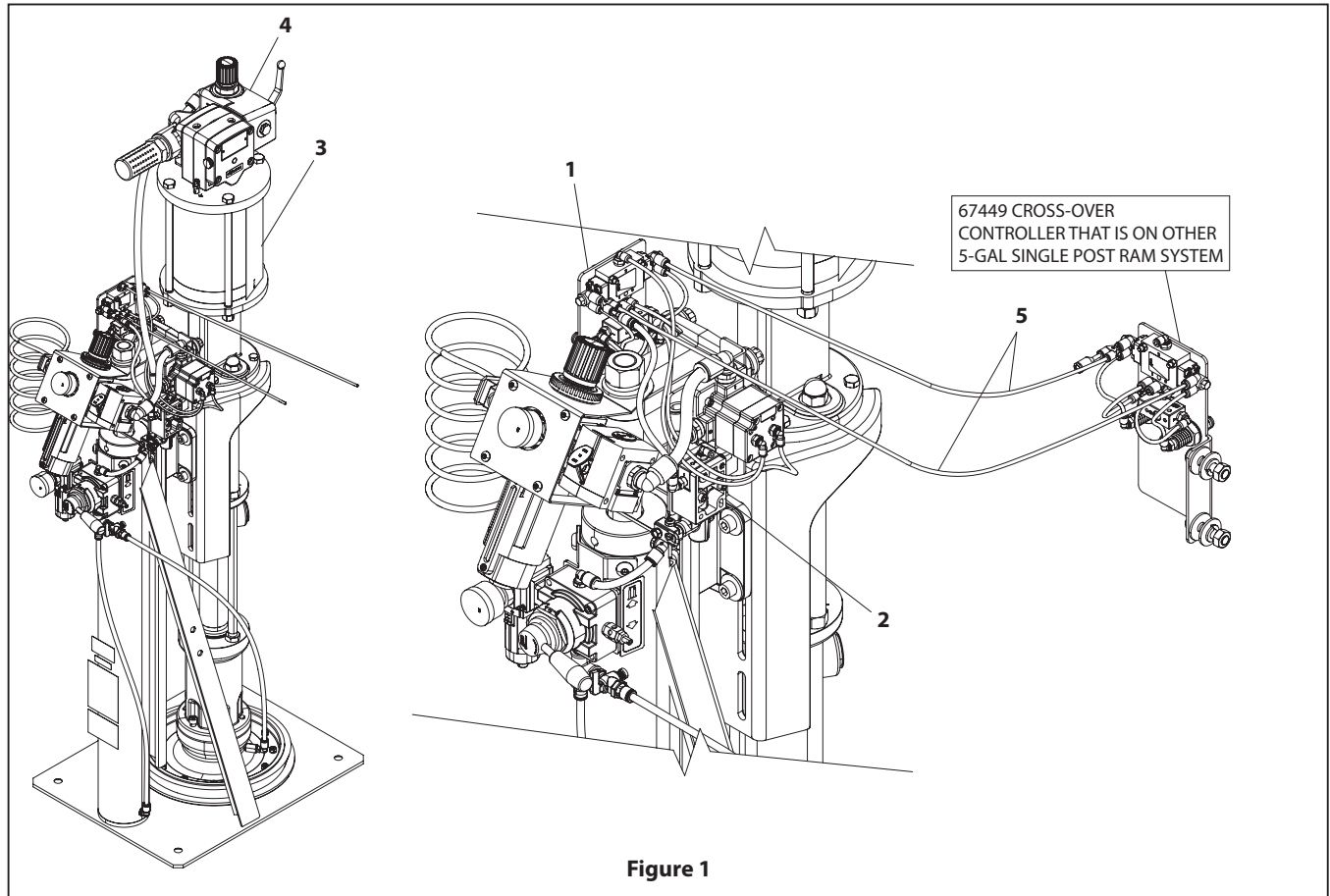


Figure 1

PART LIST / 650534

Item	Description	Qty	Part No.
1	Controller, Cross-over	(1)	67449
2	Low Level Cut-off Kit	(1)	67502
3	5-Gal Ram Package, One Post 6", 23:1	(1)	P623RCSC
4	Regulator/Shut-off	(1)	67442
5	Tubing	50ft	94981-XXX-X

PVA

One Mustang Drive Cohoes, NY 12047

① +1 518-371-2684 • FAX +1 518-371-2688 © 2019

pva.net



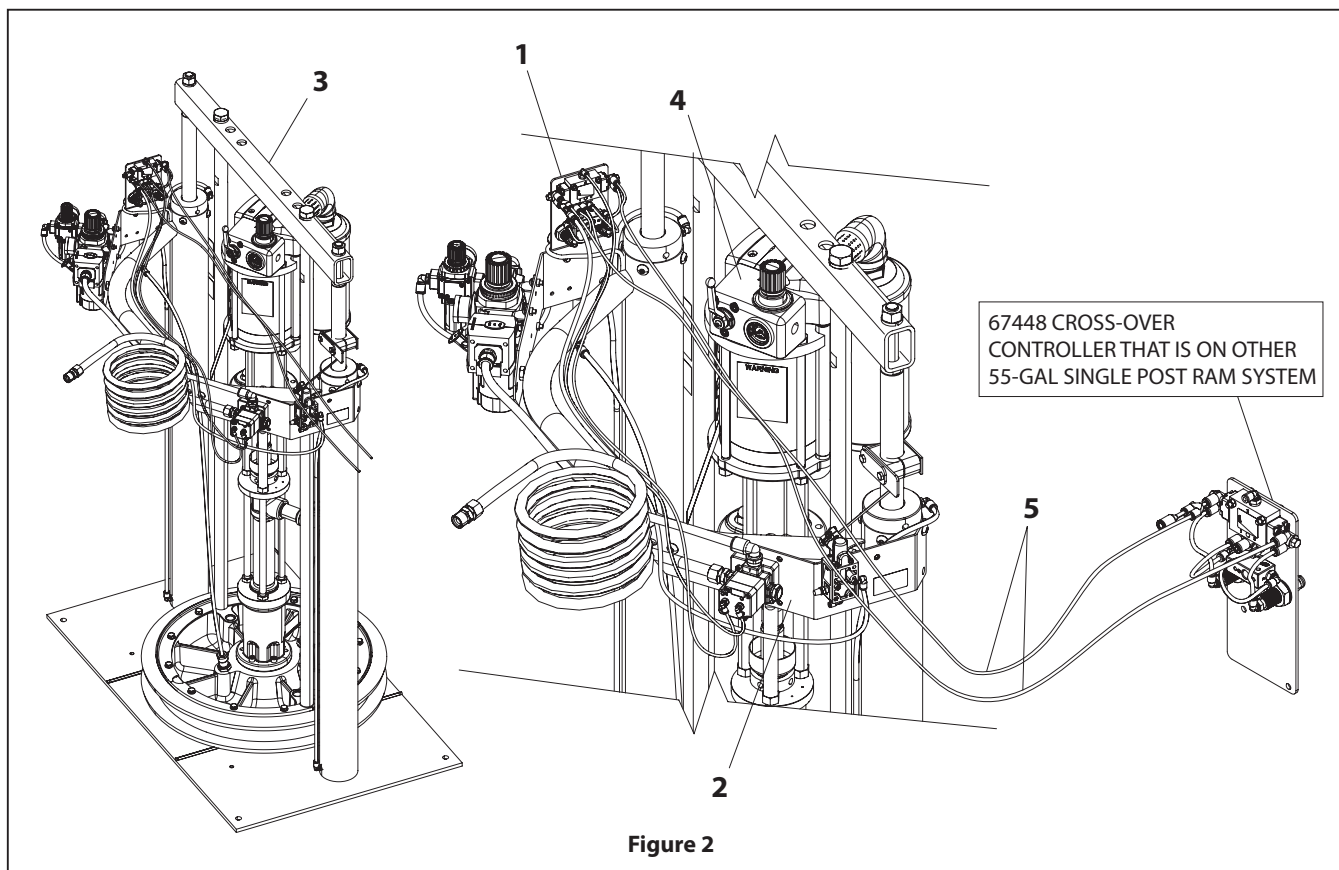


Figure 2

PART LIST / 650535

Item	Description	Qty	Part No.
1	Controller, Cross-over	(1)	67448
2	Low Level Cut-off Kit	(1)	67501
3	55-Gal Ram Package, Two Post 6", 23:1	(1)	D623RCSC
4	Regulator/Shut-off	(1)	67442
5	Tubing	50ft	94981-XXX-X

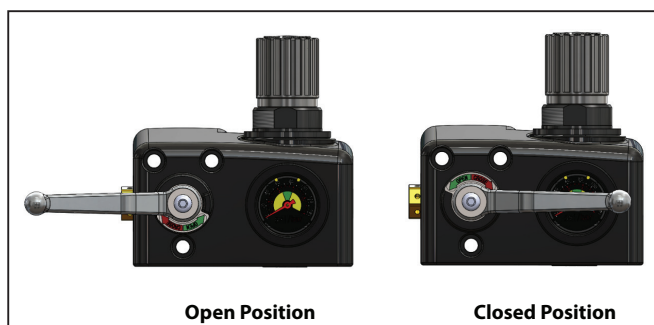
INSTALLATION AND OPERATION

CROSS-OVER CONTROLLER INSTALLATION ON RAMS

1. Install tubing 94981-XXX-X (Provided with system) from one RAM system to the other RAM system. (See illustration on First page and Figure 3 on Page 3).

OPERATION

1. Connect main air supply to system.
2. Turn OFF regulator (67442). (On/Off position below).



3. Raise the both Rams and place a drum of material into position.
4. Lower both Rams into the drums.
5. Press and hold the "Primer" button. This allows you to prime the pump. This has to be done on both Rams.
6. The system is now ready for operation.
7. Press the "Start" button on one of the Rams to start the pump.
8. When one drum becomes empty, the other pump will begin pumping by receiving a signal from the Ram with the empty drum.
9. **NOTE:** Priming operation will be required when there is new material.
10. Turn ON regulator (67442) and adjust to desired pressure.

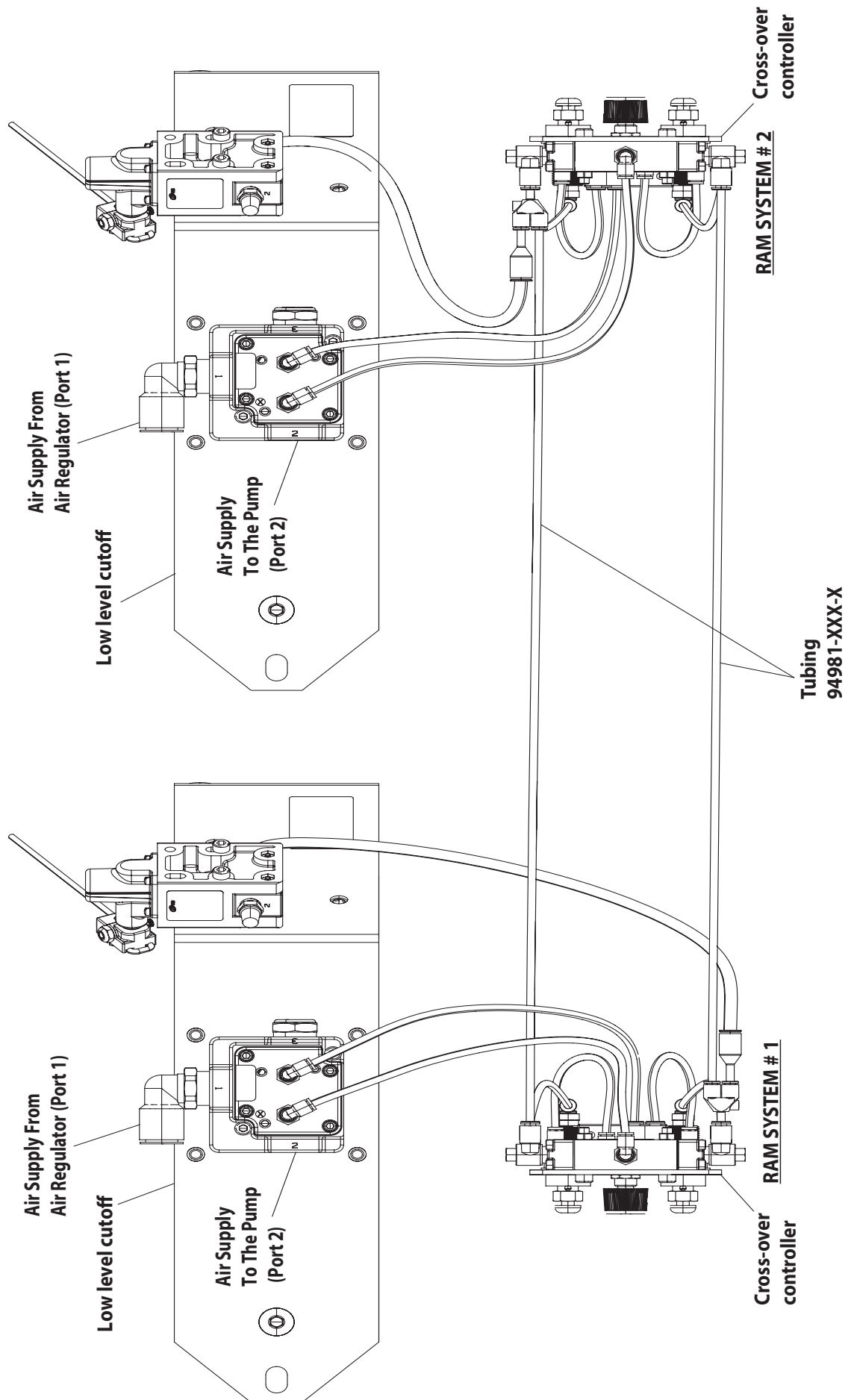


Figure 3

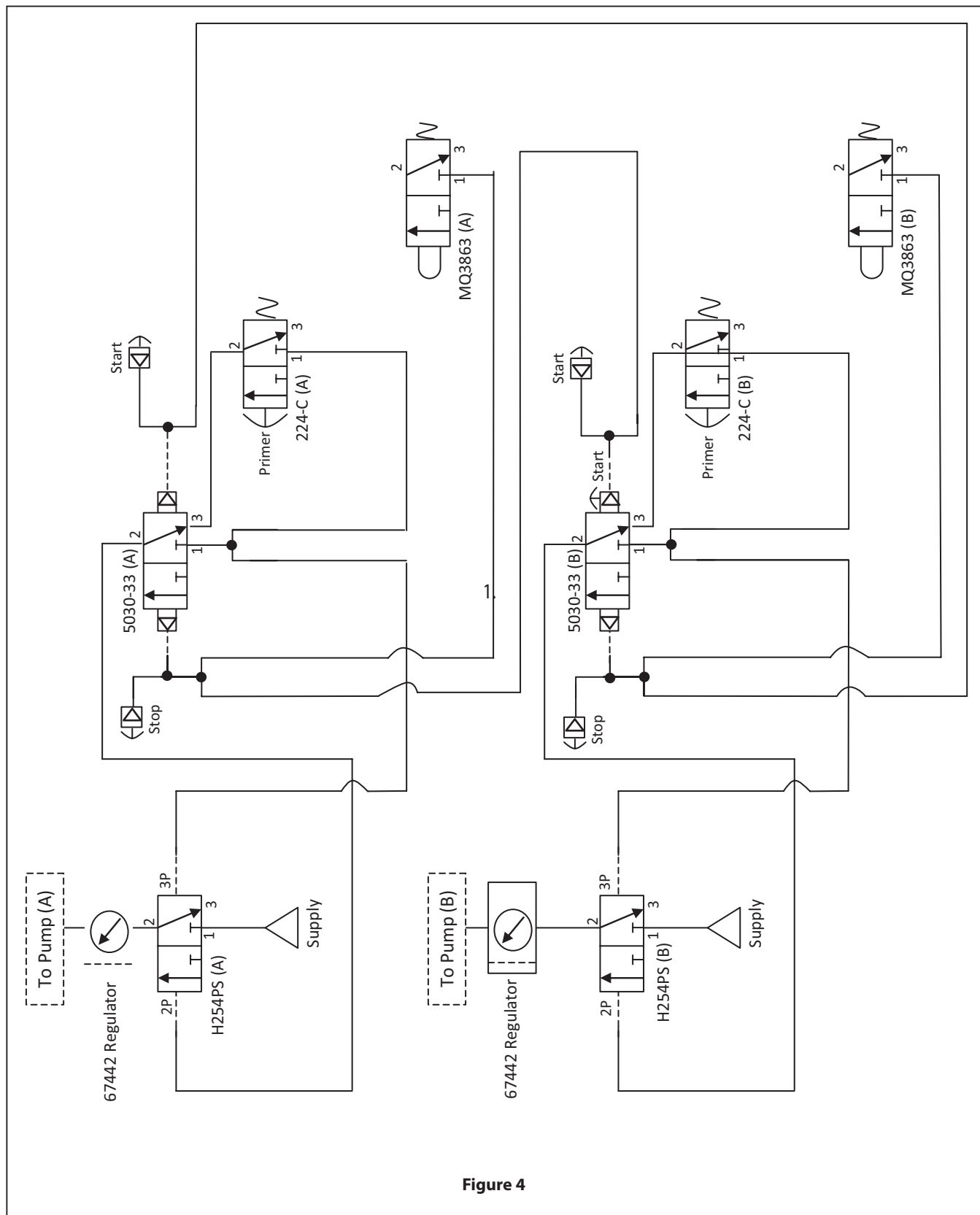


Figure 4