



POSITIVE DISPLACEMENT BLOWERS  
ROTARY VANE COMPRESSORS | VACUUM PUMPS

# Vacuum Truck Products



# Offering the **Most Comprehensive Line** of Vacuum Truck Products

## A Legacy of Quality Transport Solutions

Gardner Denver's vacuum truck product line is comprised of a wide variety of trusted brands and dependable technologies. This allows us to offer a superior range of solutions to fit your specific application, with each product having the inherent high build quality and reliability you would expect from any Gardner Denver product.

## Industries Served

- Municipalities
- Sanitation
- Power & Utilities
- Oil & Gas
- Industrial
- Telecommunications
- & Many More



### VEHICLE TYPE

#### Skid Mounted & Pull-Behind Vacuum Trailers



#### Pumper Trucks



#### Municipal Trucks



#### Hydro-Excavation Trucks

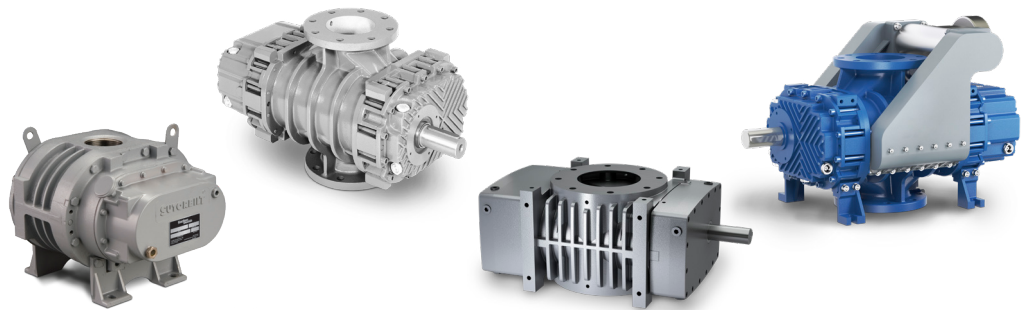






## PRODUCT MODELS

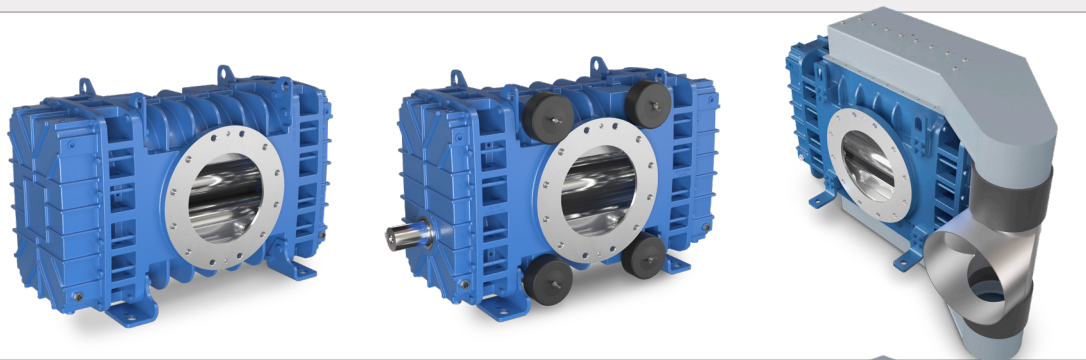
- Sutorbilt Legend
- RBS Series
- HeliFlow
- RB-DV



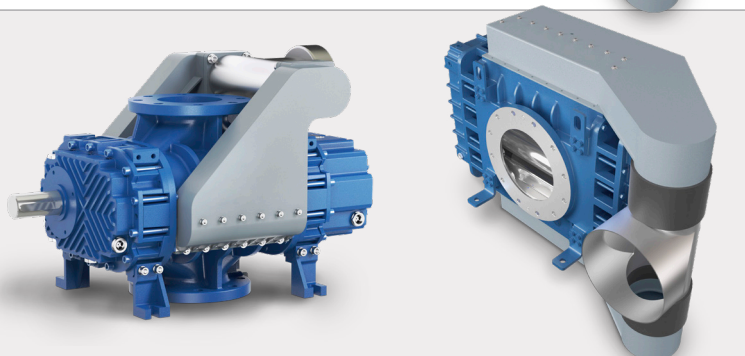
- Wittig RFL
- Wittig RFW
- RB-DV



- TriFlow
- RB-DV



- RB-DV



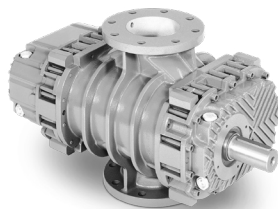


## Skid Mounted & Pull-Behind Vacuum Trailers



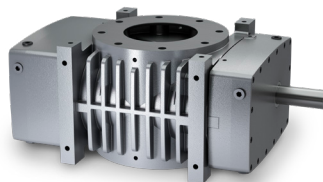
### Sutorbilt Legend

- DSL or Grease Lube Options
- Vacuum up to 15 inHg
- Bi-Lobe Rotor Profile



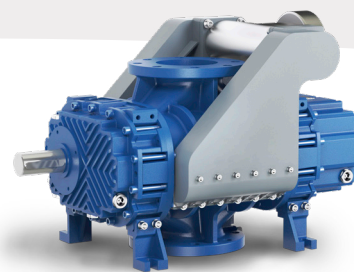
### RBS Series

- DSL Lubrication
- Vacuum up to 16 inHg
- Robust Design
- Tri-Lobe Rotor Profile



### HeliFlow

- DSL Lubrication
- Vacuum up to 16 inHg
- Helical Tri-Lobe Rotor Profile
- Reduced Pulsations = Lower Noise & Higher Reliability



### RB-DV

- Patented air injection system for cooler temps, noise reduction, efficiency, & ease of installation
- Easy Maintenance—no wearing parts
- Tri-Lobe Rotor Profile

**LOW VACUUM**  
up to 16 inHg

**HIGH VACUUM**  
up to 28 inHg





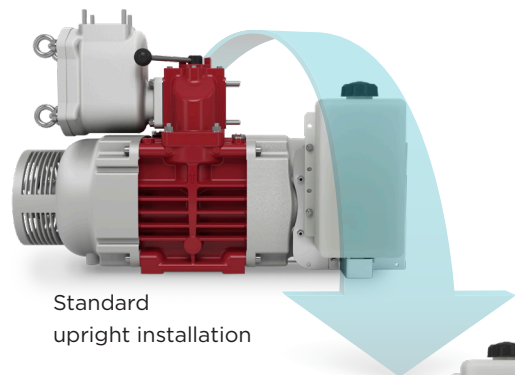
## Ideal Applications

- Soft Excavation
- Daylighting
- Clean up
- Pit Cleaning
- Potholing
- Trenching





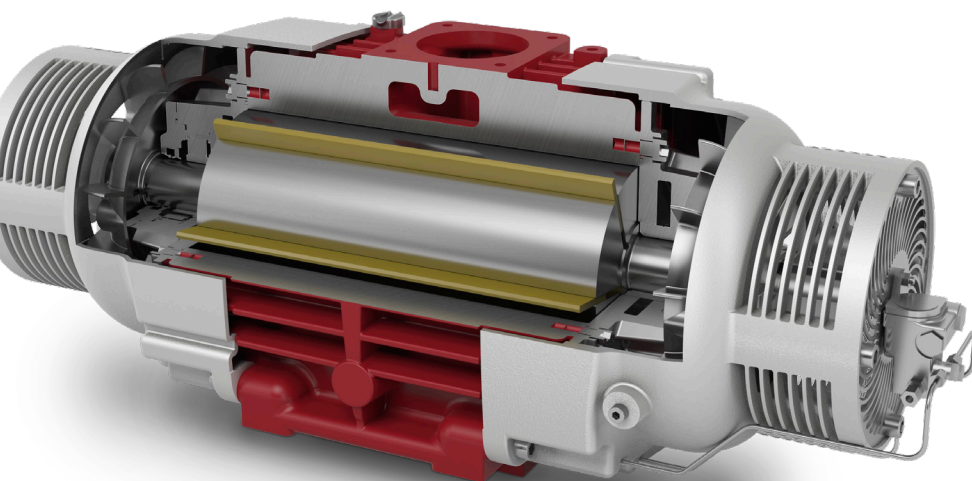
# Fixed Axle Pumper Trucks



Standard  
upright installation



Side-mount installation



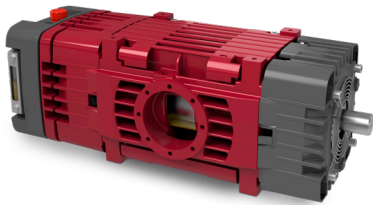
The RFL 102 features top-mounted reverse flow and non-return valve.





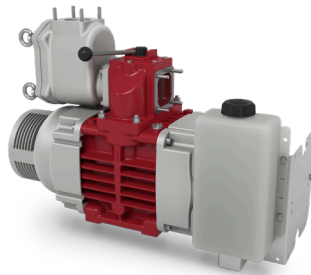
## Ideal Applications

- Restaurant Grease Traps
- Septic Tank Cleaning
- Portable Restroom Cleaning
- Holding Pits
- Cesspool Pumping
- Hydraulic Fracturing Water Collection
- Oil Well Service
- Sludge Removal



### RFL 100

- Radial Vane Technology
- Airflow up to 412 cfm
- Most Durable Pump in I ts Class



### RFL 102

- Radial Vane Technology
- New Side-Mounted Lubrication Tank, Remote-Mount Optional
- More Compact Suction Filter Saving Space



### RFW

- Intermittent Vacuum up to 27 inHg (24 inHg Continuous Vacuum)
- Water-Cooled Unit
- Fast Evacuation Times
- Multiple Drive Options Available
- Compact Mounting Design



### RB-DV

- Patented air injection system for cooler temps, noise reduction, efficiency, & ease of installation
- Easy Maintenance — no wearing parts
- Tri-Lobe Rotor Profile

**LOW VACUUM**  
up to 24 inHg

**HIGH VACUUM**  
up to 27 inHg

**HIGH VACUUM**  
up to 28 inHg

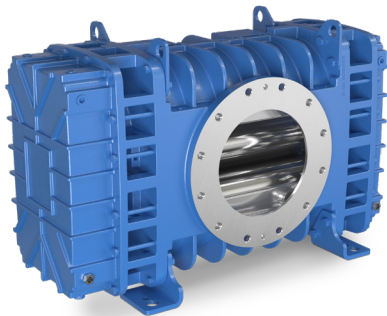
# Municipal Trucks

## Ideal Applications

- Sewer Cleaning
- Storm Sewers
- Water Treatment Plants
- Municipal Water Departments
- Cleaning & Washing



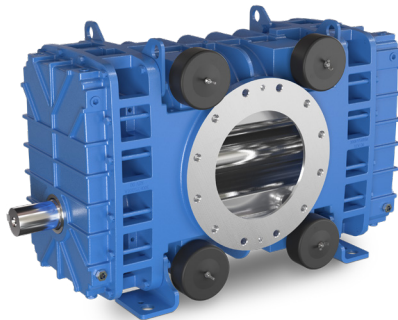




### TriFlow 825

- Vacuum up to 18 inHg
- It's efficient: up to 27% more efficient than a similar size bi-lobe blower installation

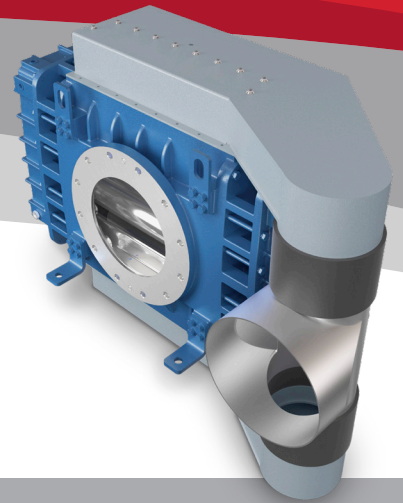
**ROUGH VACUUM**  
up to 18 inHg



### TriFlow 825-MV

- Innovative Design
- Class-exclusive 20 inHg
- Air Injection System for cooler operating temperatures and ease of installation

**ROUGH VACUUM**  
up to 20 inHg



### RB-DV

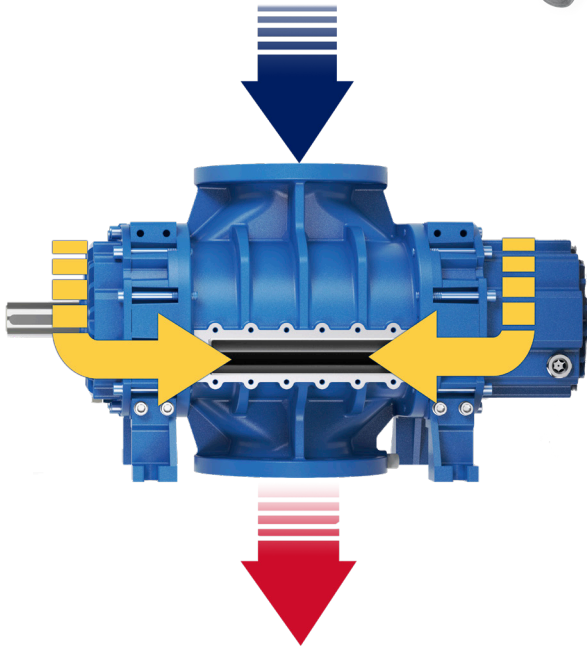
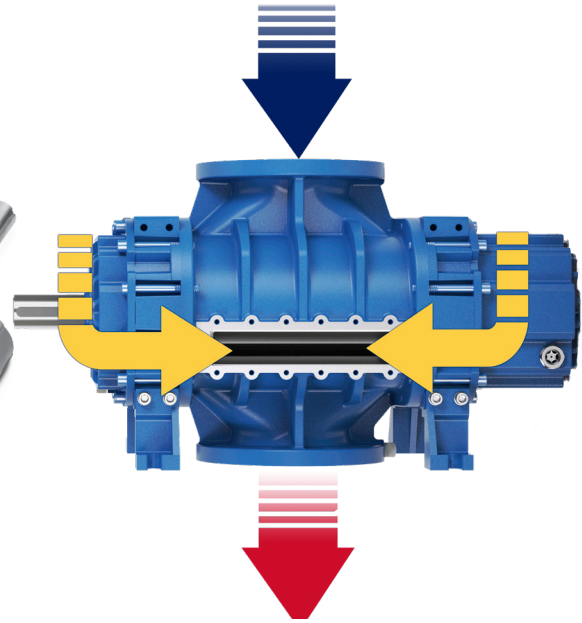
- Patented air injection system for cooler temps, noise reduction, efficiency, and ease of installation
- Easy Maintenance — no wearing parts
- Tri-Lobe Rotor Profile

**HIGH VACUUM**  
up to 28 inHg

# Hydro-Excavation Trucks

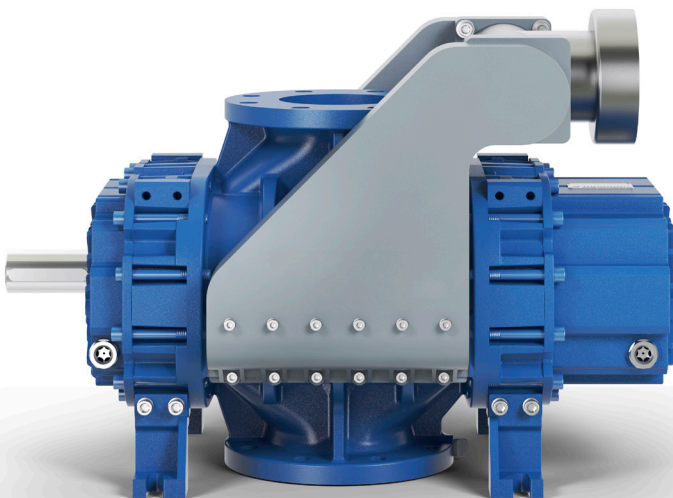
## RB-DV is Fuel Efficient

Tri-Lobe design with patented air injection is fuel efficient, putting more money in the operator's pocket.



## Patented & Unique Air Injection

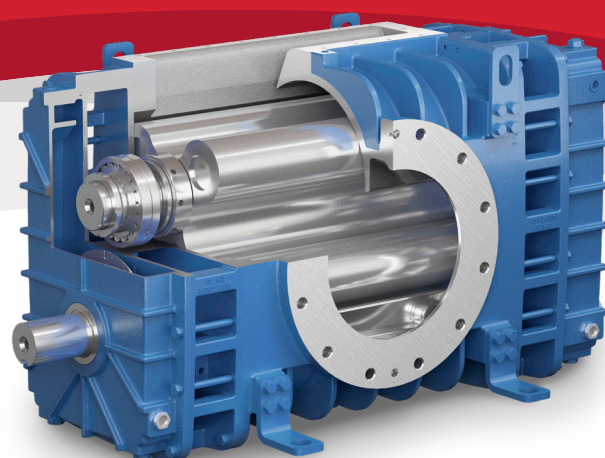
- Offers cooler operating temperatures
- Won't overheat on a dead head
- Best-in-class noise reduction



## No Cast-In Manifolds

- Reduces equipment weight & space
- Easy to install
- Less equipment weight
  - = More loads (load capacity)
  - = More money savings per load!





## Features & Benefits

- Light weight, compact designs
- Quiet, cool running deep vacuum operation
- Robust, built to last construction
- Flexible installation options
- Multiple drive options
- Flows up to 6,676 CFM

## Ideal Applications

- |                                 |                          |
|---------------------------------|--------------------------|
| ■ Industrial Combination Trucks | ■ Oil Collection         |
| ■ Hydro Excavation              | ■ Oil Field Water        |
| ■ Potholing Utilities           | ■ Grit Recovery Trailers |

### RB-DV

- Patented air injection system for cooler temps, noise reduction, efficiency, & ease of installation
- Easy Maintenance — no wearing parts
- Tri-Lobe Rotor Profile

**HIGH VACUUM**  
up to 28 inHg

The leader in every market we serve  
by continuously improving all business processes  
with a focus on innovation and velocity

**Gardner  
Denver®**

[www.GardnerDenver.com](http://www.GardnerDenver.com)

©2024 Industrial Technologies and Services, LLC  
Printed in U.S.A.  
GDT-VAC-TRUCKS 6th Ed. 6/24

