



STAINLESS STEEL FOOD & CHEMICAL PUMP

STP 125



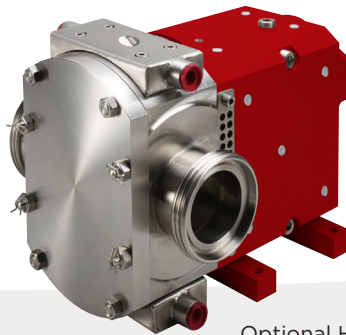
The STP125 is a 3A Certified Sanitary, stainless steel pump specifically designed for the transfer of food-grade products or chemicals from tank trailers. Its lightweight and compact design makes it ideal for tank truck applications.

### Maintenance & Flexibility

- Front loading product seal can be changed in minutes without disturbing the product pump head or piping
- Seal design allows you to choose the correct seal type for your application (O-ring, double lip, or mechanical seal)
- Quick Strip design makes cleaning and maintenance fast and efficient
- Low shaft deflection enables quiet and smooth operation
- Hydraulic direct mount and top shaft drive available

### Low Operation Costs

- Bi-directional pressure relief valve provides protection while loading or unloading
- Rotor profile and pump chamber designed using Computational Fluid Dynamics to ensure quiet, pulse-free, cavitation-resistant flow



Rotor removal tool is provided with every pump.

Optional Heat Saddles



## Specifications

- Flow rate: up to 232 gpm
- Maximum speed: 750 rpm
- Maximum pressure: 140 psi
- Weight: 145 lbs. (with relief valve)
- Suitable for temperatures up to 300°F

## Drives

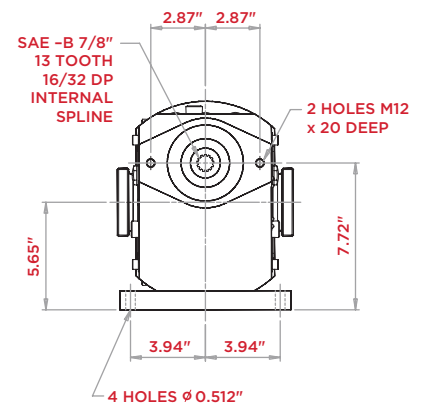
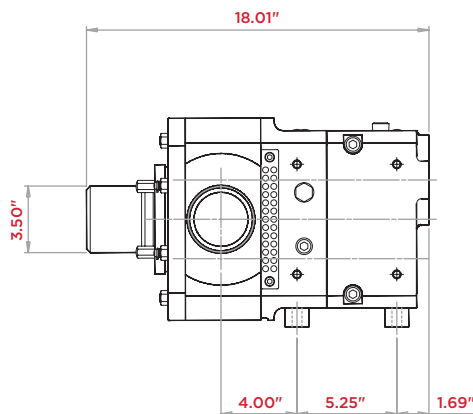
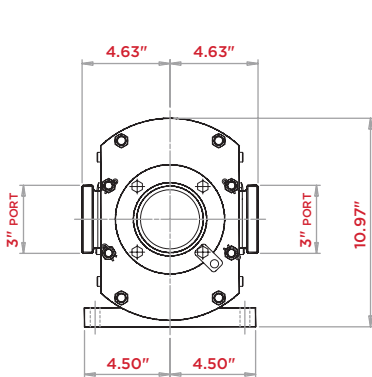
- Hydraulic direct mount
- Top shaft

## Seal Options

- Standard: Nitrile O-ring seal assembly
- Optional O-ring Material: EPDM or Viton® and Double Lip seal configurations available
- Mechanical seals
- Available Ports
  - Standard: 3" male ACME
  - Optional: 3" male camlock or 3" male NPT (special order)

## Applications

- Sugars
- Fruit Juice
- Chocolate
- Vegetable Oils
- Dairy Products
- Starches



The leader in every market we serve  
by continuously improving all business processes  
with a focus on innovation and velocity

**Gardner  
Denver®**

[www.GardnerDenver.com](http://www.GardnerDenver.com)

©2024 Industrial Technologies and Services, LLC  
Printed in U.S.A.  
GDT-STP-125 3rd Ed. 6/24

