

MultiGard™ II

Multi-Variable Digital Monitor



MultiGard™ II Multi-Variable Digital Monitor

Hoffman & Lamson's MultiGard II is a pre-configured, programmable logic controller (PLC) capable of monitoring various operating conditions for single or multiple blower applications. The number of blowers that can be monitored by a single MultiGard II is dependent on the number and type of inputs/outputs. Multi-variable monitoring can be used for any of the following:

- Surge and Motor Overload
- Bearing, Discharge and Inlet Temperature
- Motor and Bearing Vibration Protection for
- Multiple Blower Applications

Protection Features may include:

- Blower Surge for constant speed applications or VFD applications
- Blower Surge compensated for varying inlet temperature
- Motor Overload
- Blower Bearing Temperature
- Blower Bearing Vibration
- Motor Bearing Temperature
- Motor Winding Temperature
- Motor Bearing Vibration
- Failed vibration sensor or RTD indication

Control Functions may include:

- Start and stop of blower
- Blower inlet and/or blowoff valve control (discrete or 4-20 mA modulating) for individual blower
- Pressure control of individual blower
- Dissolved oxygen control of individual blower

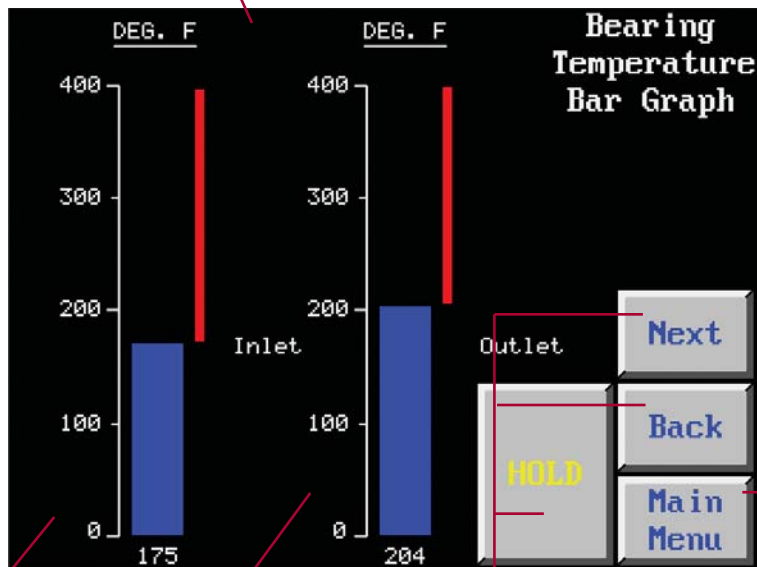
Communications:

- Industry Standard Modbus RTU Master Slave



MultiGard™ II Multi-Variable Digital Monitor

Graphic touch screen
LCD display



Calibrated
bar graphs
for process
variables

English or
metric
digital value
readouts

Press to scroll
between pages
or hold a page

Press to
review
blower
status
screens

Equipment Features

- Pre-configured and programmed for each application
- NEMA 12 (indoor dust tight) enclosure
- Graphic backlit touch screen LCD display, 12" diagonal viewing area
- **Graphical annunciation of alarms**
- All measured variables displayed by a calibrated graphic bar with digital values
- Measured values can be factory configured for English or Metric units
- Built-in timers for RUN DELAY to allow blower to reach operating speed, ALARM DELAY to prevent nuisance tripping on false alarms, MINIMUM OFF TIME to prevent restart of blower before completion of coast down period
- Alarm History Screen (Date/Time Stamped)
- Password protected setup/setpoint screens
- Blower Overview Screen enables user to see blower status at a glance

Options

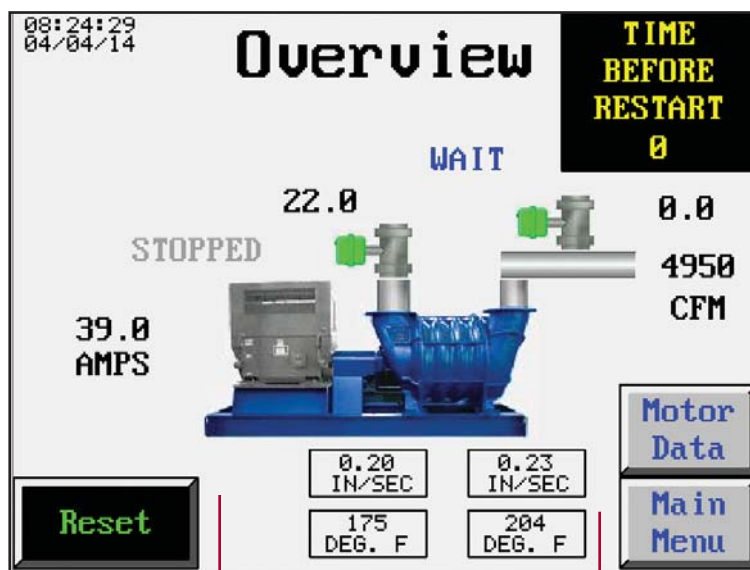
- DF1, RS-485, or Ethernet/IP communications
- NEMA 3R, 4, 4X, 7, 9 enclosures
- UL or CSA labeling

PLC Inputs

- 120 VAC or 24VDC digital inputs
- Analog 4–20 mADC
- RTD: 100 Ohm platinum

PLC Outputs

- Analog 4–20 mADC
- Relay contacts



Blower overview screen
enables user to see blower
status at a glance

Pre-configured and
programmed for
each application