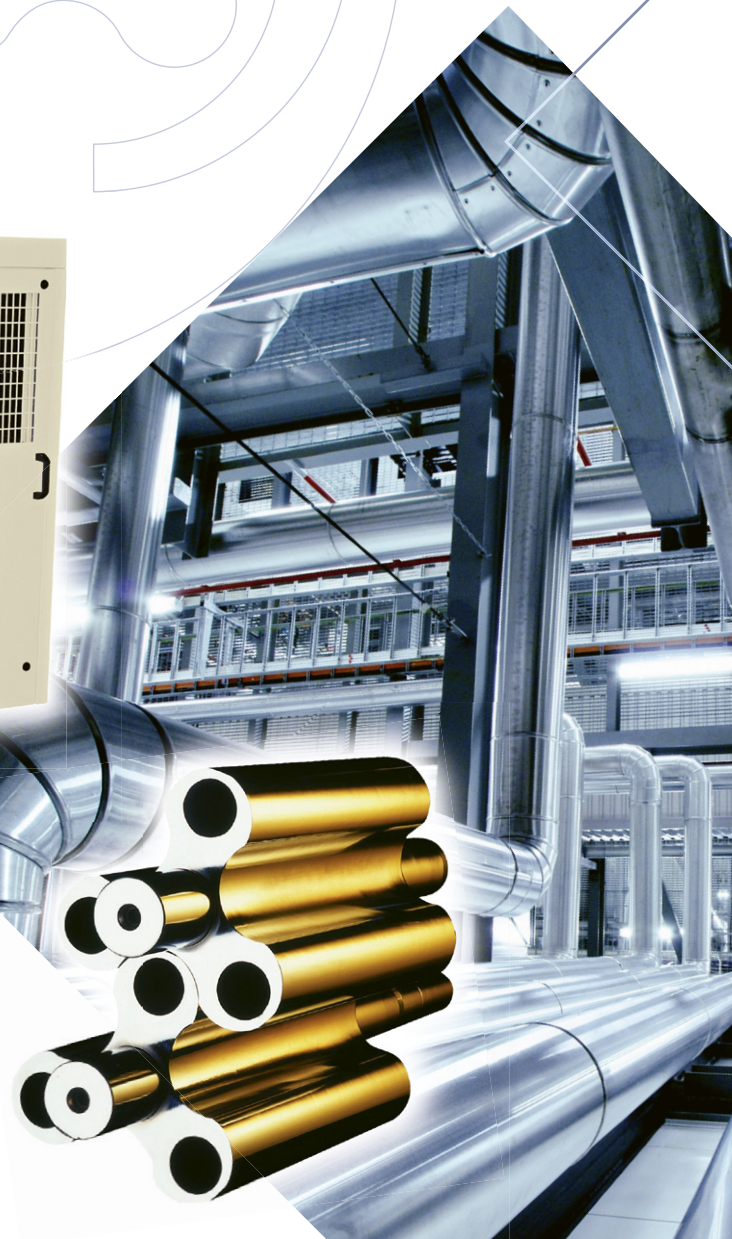


SILENTFLOW BLOWER PACKAGE PRESSURE AND VACUUM



Range

The SilentFlow range is made up a group of rotary lobe blowers designed to circulate air or neutral gases in a non-hazardous environment. This range incorporates recent requirements of EPD (European Pressure Directive) and CE safety issues.

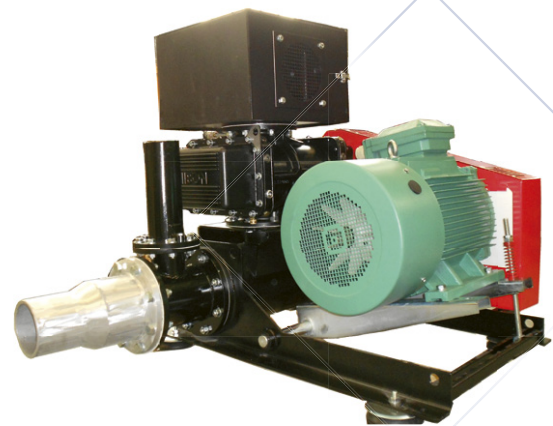
- Flow Rates: 100 m³/h (60 CFM) up to 9,000 m³/h (5,297 CFM)
- Differential Pressure up to 1,000 mbar (15 PSIG)
- Vacuum up to 500 mbar absolute (15 "Hg)

Benefits

- Package is totally CE compliant and silencers are PED compliant.
- Environmentally acoustic treatment in accordance with current standards.
- Hot-air extraction by means of a high capacity, electrically operated ventilation fan whatever the operating temperature and whatever the speed of the blower.
- The belt tension is adjusted automatically by the motor weight with pivot base.
- «Plug and Play» design, factory assembled package.

Applications

- Water treatment (Biological aeration, filters cleaning).
- Pneumatic conveying
- Combustion air
- Vacuum centralised Cleaning
- Fluidisation
- Homogenisation
- Gas Compression



PACKAGE COMPONENTS

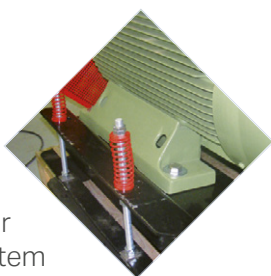


Acoustic enclosure

The enclosure is built to withstand harsh weather conditions and ensure a long life. Forced ventilation is by a motorized fan unit. The acoustic material lining the walls is flame-retardant. The plenums for inlet and outlet air are specific sized and acoustically treated to reduce the potential for noise breakout to the outside of the enclosure.

Transmission

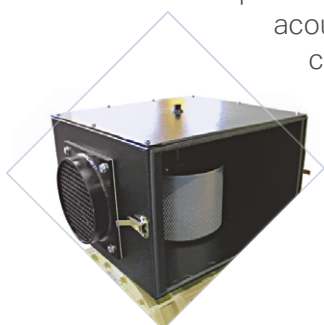
Silentflow packages are fitted with a Belt pulley transmission. Our belt tensioning system allows automatic adjustment of the motor position. That mechanism permits the installation of motors of various designs and weights (iron and light alloy enclosures, NEMA standards, IEE 841, etc). Following the first start-up, you will save maintenance time on subsequent Belt/Pulley adjustments.



The suction filter-silencer

Combined sound attenuation and filtering functions. Filtration protects blowers against premature wear and tear.

The Suction Filter Silencer is designed with a special deflector to reduce the inlet pulsations and meeting the latest acoustic standards. (available in canalised version).



Check valve

Made of aluminium and « santoprene », this valve is totally corrosion-proof. The full bore minimizes pressure losses.

The base frame Silencer

The base frame is manufactured in carbon steel and designed to incorporate a reactive silencer capable of operating across the complete noise frequency spectrum.

The safety relief valve

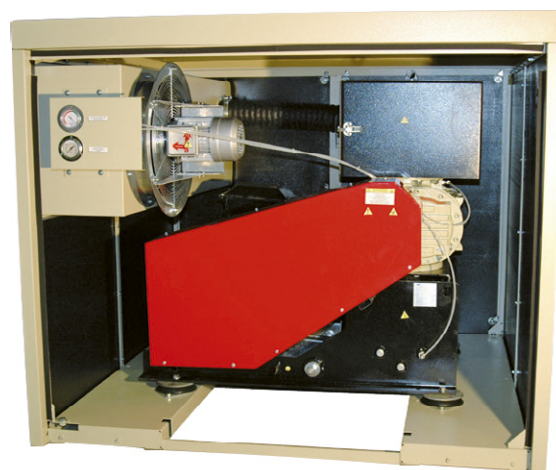
The safety valve spring type is made iron / steel and is pre-calibrated at the factory.

Options

- Thermostat at discharge
- Pressure switch at discharge
- Thermostat inside the enclosure
- Starting valve
- Outdoor enclosure adder - «wet weather application» Installation

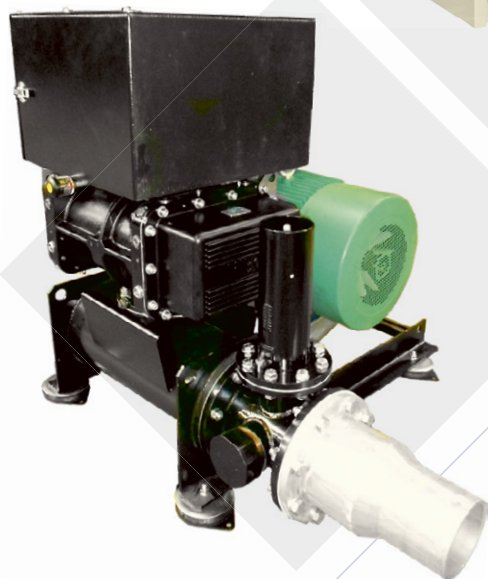
Maintenance

Blowers come with an oil change system consisting of two check valves with internal pistons and safety caps (one per housing).



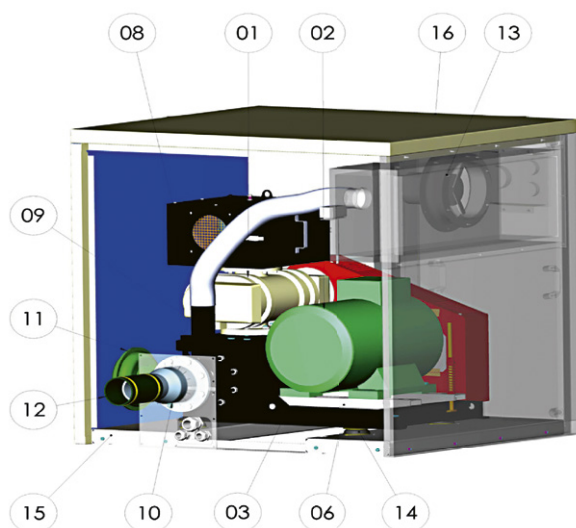
RANGE

Silentflow	Blower	Max flow (m ³ /h)	Delta P max. (mbar)	Vacuum max. (mbar)	Length (with connection) (mm)	Width (mm)	Height (mm)
SF0_2	NX 2	450	1 050	500	1 200 (1 810)	1 000	1 210
SF0_3	NX 3	650	1 000	500	1 200 (1 810)	1 000	1 210
SF1_5	NX 5	1 000	1 000	500	1 240 (1 472)	1 400	1 390
SF1_8	NX 8	1 480	1 050	500	1 240 (1 472)	1 400	1 390
SF2_12	NX 12	2500	1 000	500	1 560 (1 780)	1 660	1 410
SF2_18	NX 18	3 000	1 050	500	1 560 (1 780)	1 660	1 410
SF3_26	NX 26	4 200	1 000	500	1 850 (2 305)	2 000	1 890
SF3_43	NX 43	4 700	1 000	500	1 850 (2 305)	2 000	1 890
SF4_43	NX 43	5 500	1 000	500	2 660 (3440)	1810	2640
SF4_55	SN855	6 000	1 100	500	2 660 (3 440)	1 810	2 640
SF4_70	SN870	6 500	900	500	2 660 (3 440)	1 810	2 640
SF5_90	SN890	8 000	900	500	2 780 (2 960)	2 200	2 795

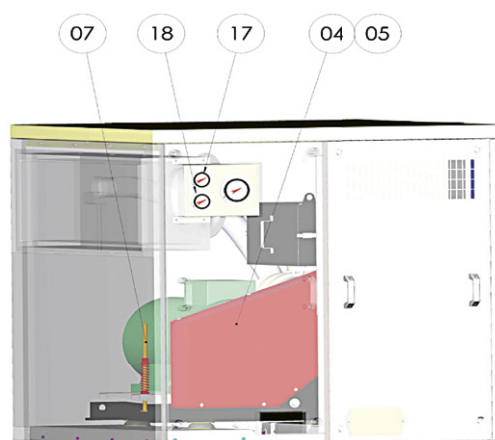


CONFIGURATION (EXAMPLES)

Pressure Blower Package

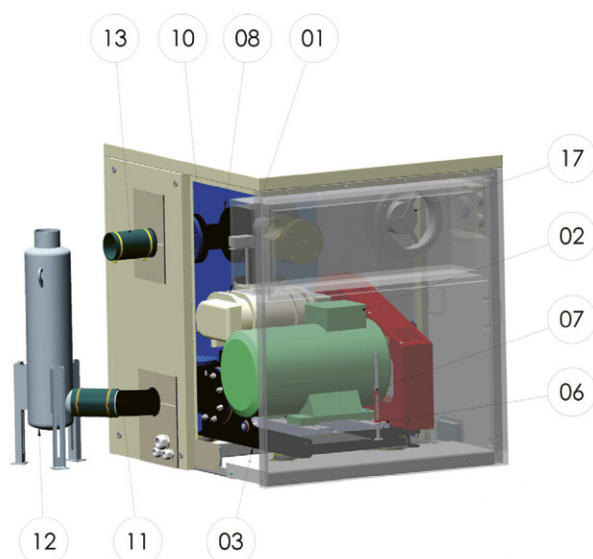


- 01** Blower
- 02** Motor
- 03** Silencer base frame
- 04** V-belt drive
- 05** Drive guard
- 06** Motor arms
- 07** Tensioning device
- 08** Filter silencer
- 09** Relief valve

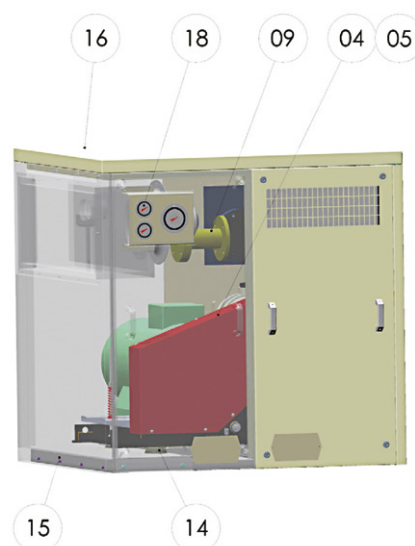


- 10** Non return valve
- 11** Unloading valve (option)
- 12** Flexible connecting pipe
- 13** Air fan
- 14** Anti vibratoy support
- 15** Anchor bolt
- 16** Acoustic enclosure
- 17** Pressure gauge
- 18** Fouling indicator
- 19** Temperature gauge (option)

Vacuum Exhauster Package



- 01** Blower
- 02** Motor
- 03** Silencer base frame
- 04** V-Belt drive
- 05** Drive guard
- 06** Motor arms
- 07** Tensioning device
- 08** Filter silencer
- 09** Relief valve
- 10** No return valve
- 11** Silencer connecting pipe
- 12** Outlet silencer (option)



- 13** Flexible connecting pipe
- 14** Anti vibratory support
- 15** Anchor bolt
- 16** Acoustic enclosure
- 17** Fan
- 18** Fouling switch (no visible)
- 19** Temperature gauge (option)
- 20** Pressure gauge

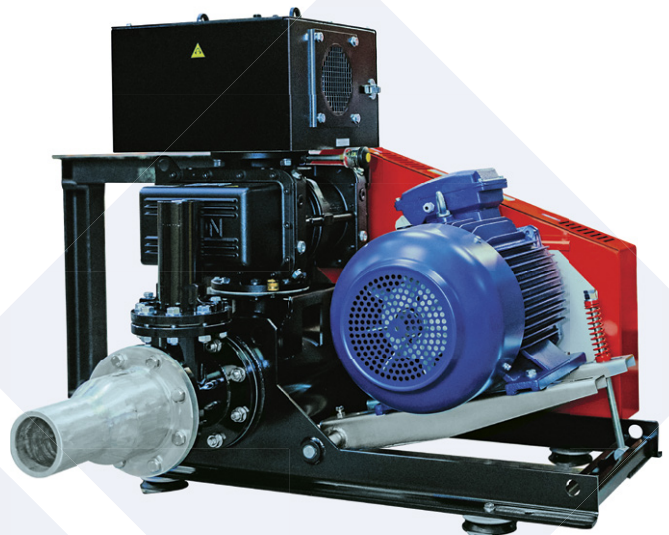
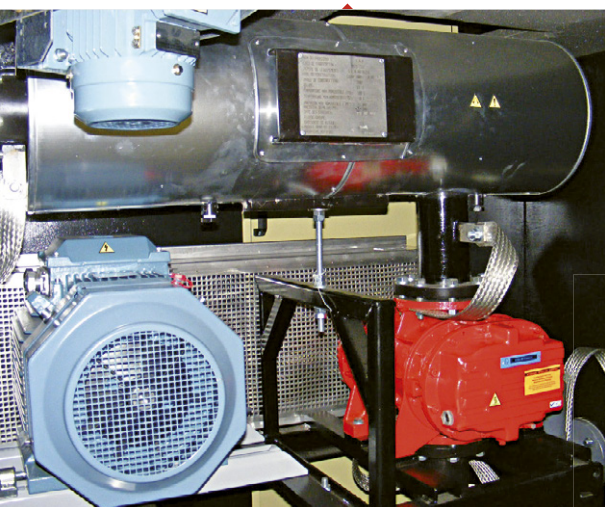
APPLICATIONS

- ◆ Biological aeration
- ◆ Agitation
- ◆ Filters cleaning
- ◆ Wastes Treatment
- ◆ Pneumatic conveying
- ◆ Feeding membrane filters
- ◆ Combustion air
- ◆ Desulfurization
- ◆ Centralised cleaning Dust
- ◆ Homogeneization
- ◆ Fluidisation
- ◆ Pneumatic handling
- ◆ Gas Compression
- ◆ Gas transfer

INDUSTRIES

- ◆ Wastewater or drinking water treatment
- ◆ Cement works
- ◆ Chemical or petrochemical industries
- ◆ Food industries
- ◆ Thermal power plants
- ◆ Metallurgical industries
- ◆ Paper Industry

■ Package in version ATEX
with acoustic enclosure



AFTERMARKET AND SERVICES

- ◆ **Genuine Spare Parts**
- ◆ **On-site or In-Plant Repairs**
- ◆ **Commissioning and Start-up Services**
- ◆ **Technical Expertise**
- ◆ **Standard Positive Displacement Blower Exchange Services**
- ◆ **Customized Annual Service Plans**



PROTECT
COMPLETE PEACE OF MIND





An Ingersoll Rand Business

www.hibon.com

**INGERSOLL RAND AIR
SOLUTIONS HIBON®**

2 avenue Jean-Paul Sartre,
59290 Wasquehal
France

T: +33 (0)3 20 45 39 39

E: hibon@irco.com

www.ingersollrand.com

www.hibon.com

**COMPRESSED AIR SYSTEMS
AND SERVICES HIBON INC**

100 Voyageur
Pointe Claire Quebec,
Canada
H9R 6A8

T: +1 514 631-3501

F: +1 877 584 0307

www.hibon.com



Ingersoll Rand Inc. (NYSE:IR), driven by an entrepreneurial spirit and ownership mindset, is dedicated to helping make life better for our employees, customers and communities. Customers lean on us for our technology-driven excellence in mission-critical flow creation and industrial solutions across 40+ respected brands where our products and services excel in the most complex and harsh conditions. Our employees develop customers for life through their daily commitment to expertise, productivity and efficiency. For more information, visit www.IRco.com.