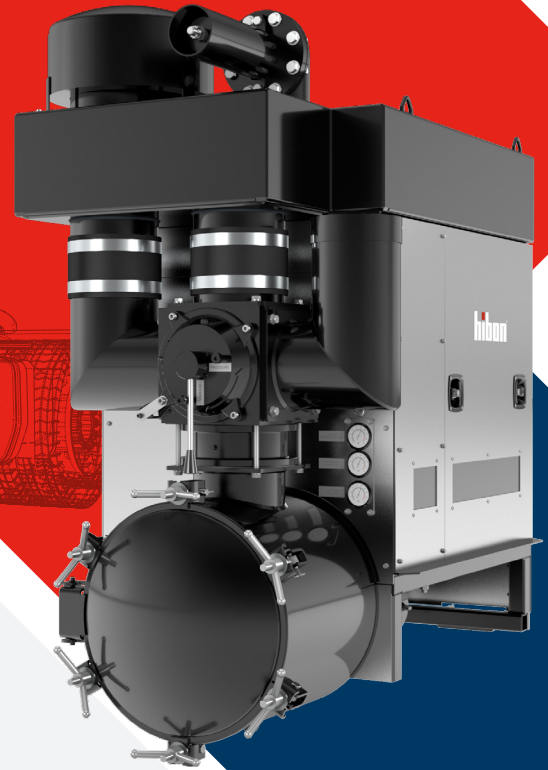




PRESSURE & VACUUM  
SOLUTIONS



# RB-DV 85-125 VACUUM / PRESSURE OFF-LOADING PACKAGE

Hibon RB-DV 85-125 packages provide proven performance in the 1602 CFM (2722 m<sup>3</sup>/hr) to 3800 CFM (6456 m<sup>3</sup>/hr) / 28"hg plug and play system.



**EASY**  
TO INSTALL



**BEST**  
IN CLASS



**SIMPLE TO**  
OPERATE & MAINTAIN

# MARKET LEADING **THREE-LOBE** POSITIVE DISPLACEMENT TECHNOLOGY

Hibon RB-DV 85-125 vacuum blower packages offers design and energy efficient features that can be used in various applications.

This compact vacuum or pressure off-loading package is ideally suited for the rigorous demands of **hydro-excavation, daylighting, industrial vacuuming and grit recycling applications.**

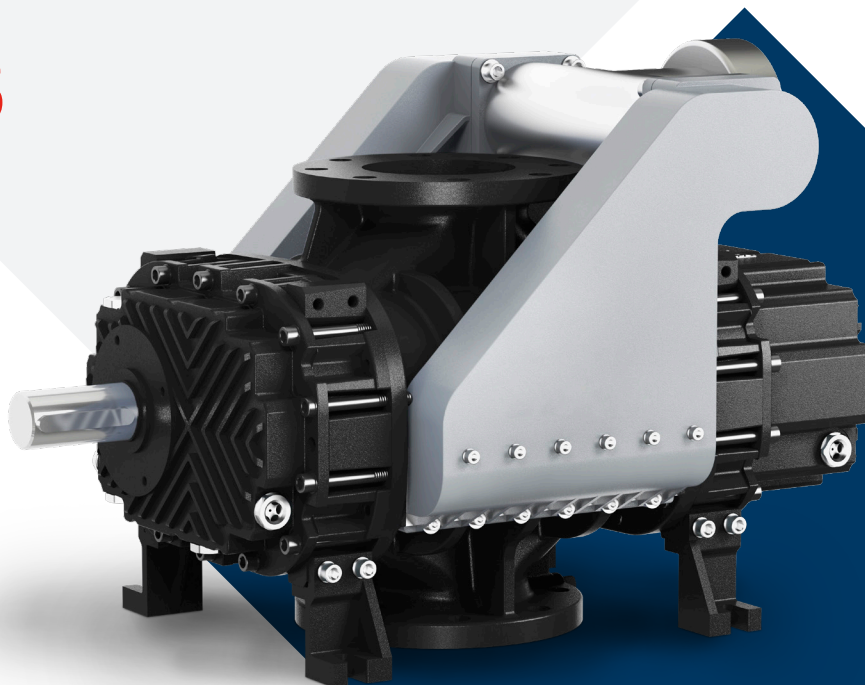
## FEATURES

## BENEFITS

<b>+ HIBON RV-DV 85-125 / 3800 CFM - 28"hg THREE-LOBE IMPELLER CONSTRUCTION</b>	Best in class performance delivering more CFM and cooler operation.
<b>+ SUPPORT FRAME, SILENCER SUPPORTS &amp; LIFTING LUGS</b>	Smaller footprint, more compact, more robust and simple installation.
<b>+ UNIQUE EXHAUST &amp; AIR INJECTION SILENCERS</b>	Superior attenuation than conventional silencers.
<b>+ VIBRATION ISOLATION PADS</b>	Prevents vibration transfer between chassis and blower package.

## COMPONENTS

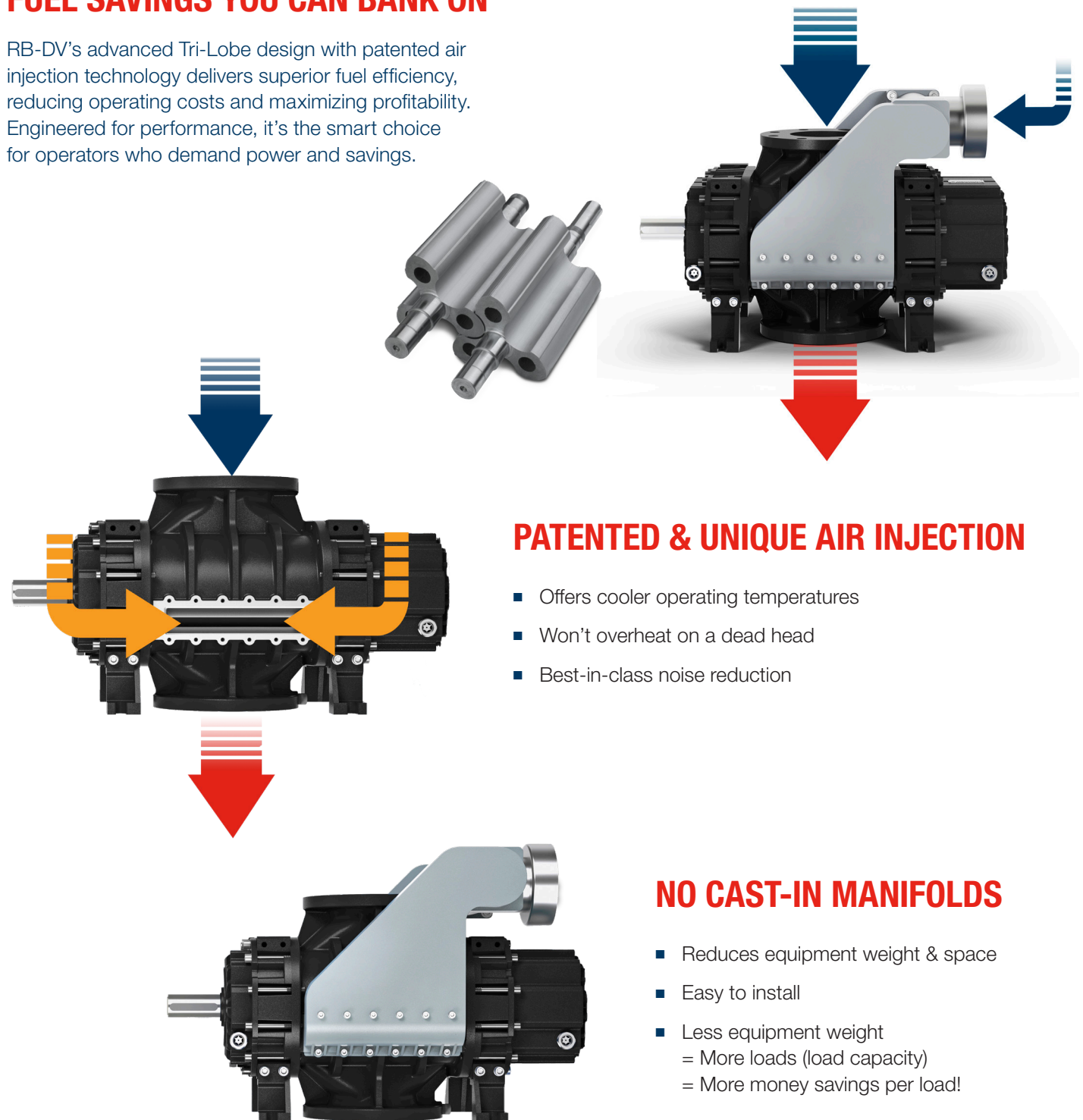
- RB-DV 85-125 Vacuum Blower
- Compact Manifold
- Hibon Pressure Relief Valve NP Series
- Hibon Support Frame
- Vibration Isolation Pads
- Check Valve
- Discharge Silencer
- Vent Hood
- Flexible Connectors
- Air Injection Silencer



# RB-DV OPERATING PRINCIPLE

## FUEL SAVINGS YOU CAN BANK ON

RB-DV's advanced Tri-Lobe design with patented air injection technology delivers superior fuel efficiency, reducing operating costs and maximizing profitability. Engineered for performance, it's the smart choice for operators who demand power and savings.



## PATENTED & UNIQUE AIR INJECTION

- Offers cooler operating temperatures
- Won't overheat on a dead head
- Best-in-class noise reduction

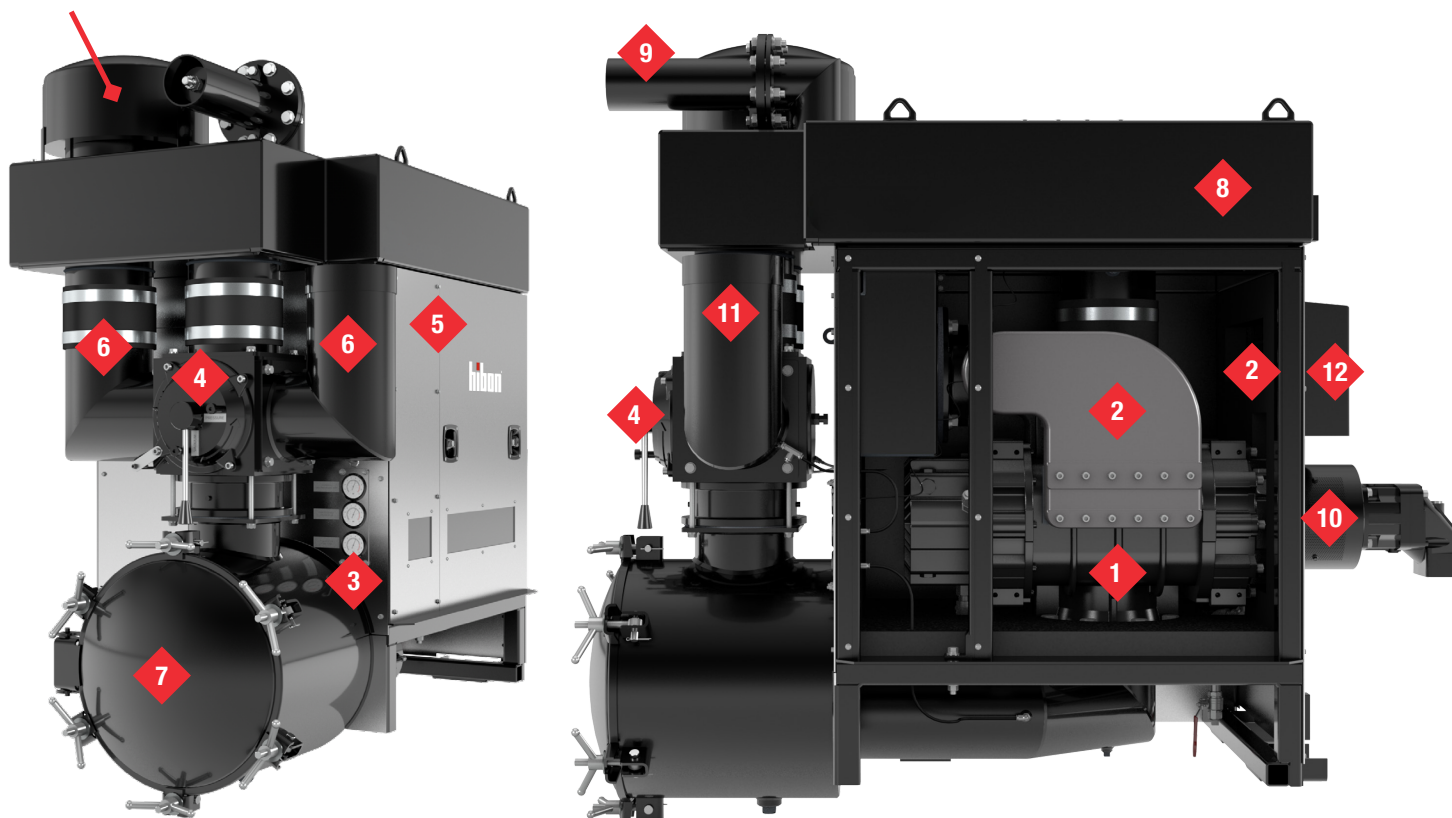
## NO CAST-IN MANIFOLDS

- Reduces equipment weight & space
- Easy to install
- Less equipment weight
  - = More loads (load capacity)
  - = More money savings per load!

## RB-DV 85-125 PACKAGE DESIGN FEATURES

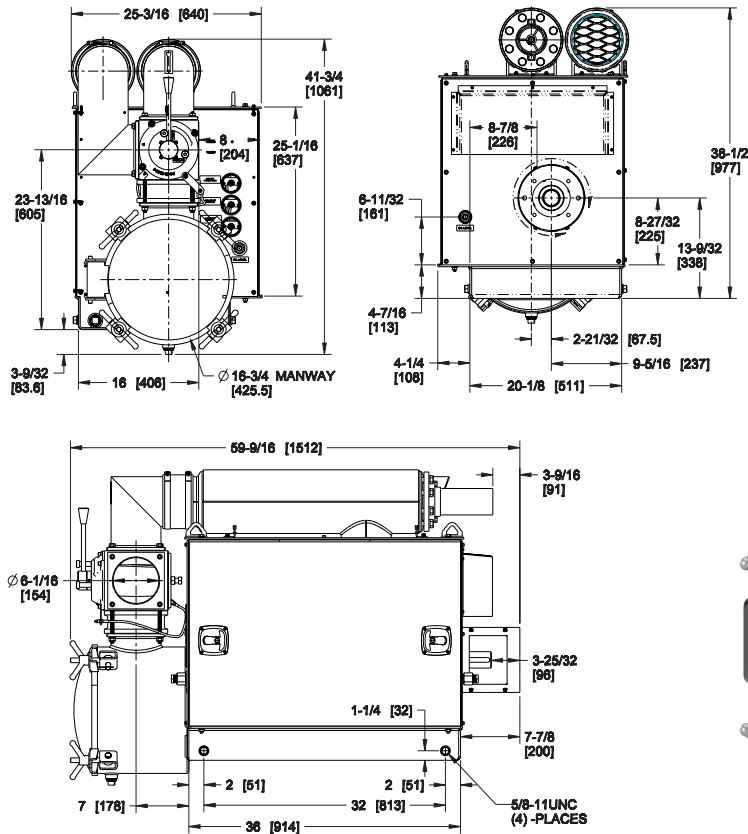
- 1** RB-DV 85-125  
INSIDE ENCLOSURE
- 2** COMPACT MANIFOLD AND  
AIR INJECTION SILENCER  
INSIDE ENCLOSURE
- 3** INSTRUMENTATION  
GAUGES AND SWITCHES
- 4** 4-WAY VALVE
- 5** STAINLESS STEEL SOUND  
ENCLOSURE WITH OIL  
LEVEL WINDOW OR EXTERNAL  
SIGHT GLASSES
- 6** ALL NECESSARY PLUMBING  
AND HARDWARE
- 7** INLET FILTER HOUSING  
+ CARTRIDGE
- 8** DISCHARGE SILENCER
- 9** RELIEF VALVE
- 10** HYDRAULIC ADAPTOR
- 11** VACUUM/PRESSURE  
CONNECTION TO TANK
- 12** AIR INJECTION  
INLET COVER

Vertical Hood



## RB-DV 85 PACKAGE AIR INJECTION VACUUM / PRESSURE BLOWER

### DIMENSIONS Imperial



### PERFORMANCE CHART

BLOWER	SPEED RPM	WEIGHT LBS	30% 9 INHG		50% 15 INHG		60% 18 INHG		70% 21 INHG		80% 24 INHG		85% 25.5 INHG		90% 27 INHG		93% 28 INHG	
			CFM	BHP	CFM	BHP	CFM	BHP	CFM	BHP	CFM	BHP	CFM	BHP	CFM	BHP	CFM	BHP
MODEL <b>85</b>  QG (CFM)	1500	551.2	484	12.7	424	20.8	353	24.8	282	28.8	-	-	-	-	-	-	-	-
	2000		696	17.7	641	28.8	529	33.5	424	39.1	335	44.5	-	-	-	-	-	-
	2500		908	23.2	853	36.6	776	43.3	647	50.0	500	56.7	353	60.0	-	-	-	-
	3000		1119	29.6	1059	45.7	953	53.6	818	61.8	676	69.8	529	73.8	*	80.4	-	-
	3500		1331	36.7	1235	55.5	1200	64.3	1094	74.2	935	83.6	794	88.3	*	93.0	-	-
	3800		1458	41.5	1412	61.6	1335	71.7	1200	82.3	1059	92.5	918	97.6	*	102.6	BO	105.9

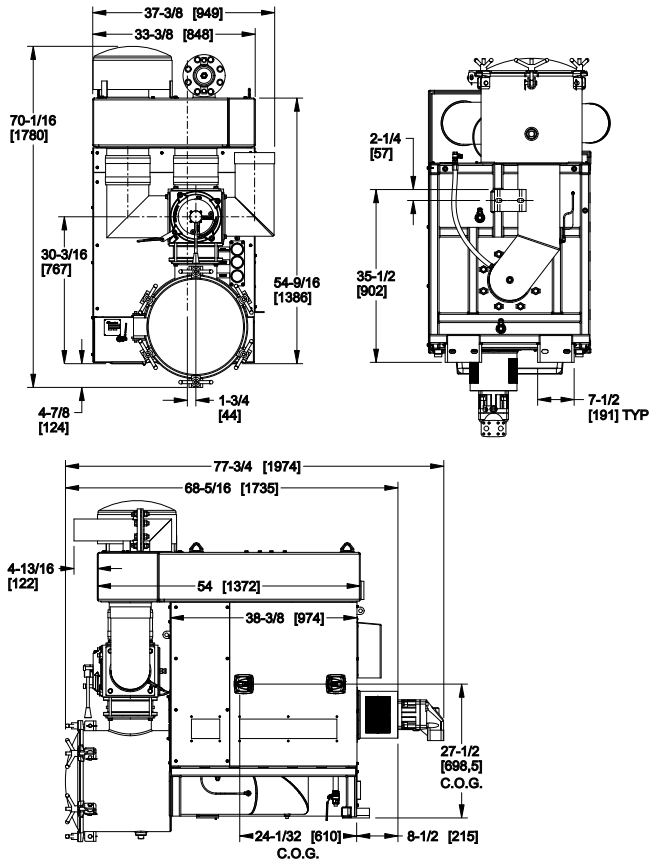
\* The RB-DV family can operate at vacuum levels up to 93% below atmospheric pressure. Flow values can vary greatly at vacuum levels below 85% atmospheric pressure; please contact customer service for specific flow calculations based on site conditions.

QG = Volume displacement BO = Blank off



## RB-DV 105 PACKAGE AIR INJECTION VACUUM / PRESSURE BLOWER

### DIMENSIONS Imperial



### PERFORMANCE CHART

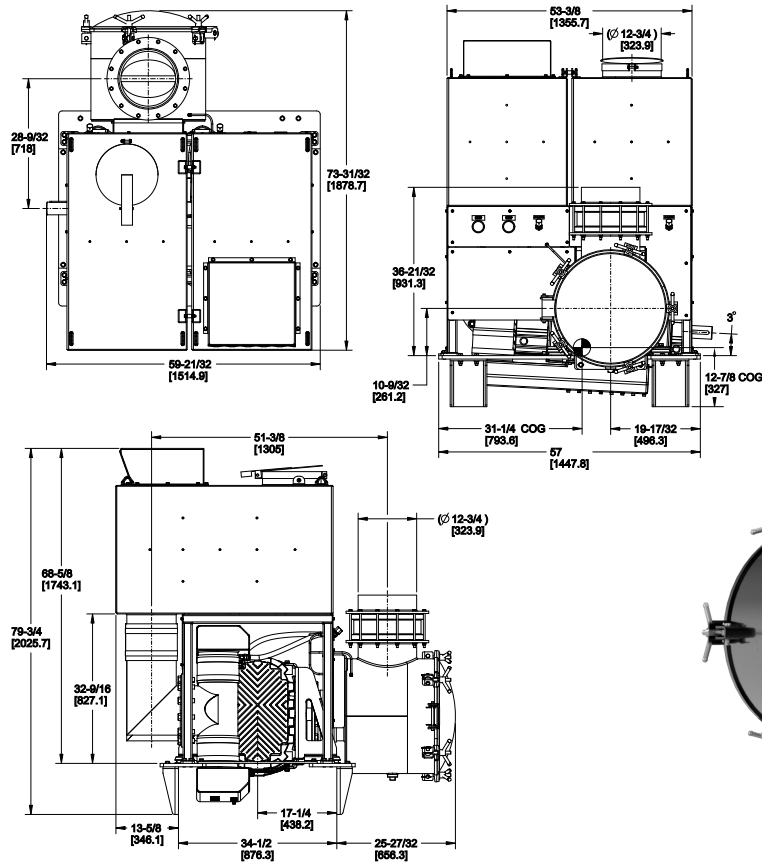
BLOWER	SPEED RPM	WEIGHT LBS	30% 9 INHG		50% 15 INHG		60% 18 INHG		70% 21 INHG		80% 24 INHG		85% 25.5 INHG		90% 27 INHG		93% 28 INHG	
			CFM	BHP	CFM	BHP	CFM	BHP	CFM	BHP	CFM	BHP	CFM	BHP	CFM	BHP	CFM	BHP
MODEL <b>105</b>  QG (CFM)	1500	881.8	946	23.5	824	37.9	765	44.6	588	52.5	353	59.8	-	-	-	-	-	-
	1750		1138	28.0	1012	45.0	941	52.7	765	61.9	529	70.5	206	74.6	-	-	-	-
	2000		1329	32.8	1200	52.3	1118	62.0	941	71.7	706	81.3	382	86.3	-	-	-	-
	2250		1521	38.1	1388	59.9	1294	70.9	1118	81.7	882	92.7	559	98.2	*	104.0	-	-
	2500		1713	43.7	1576	67.9	1471	80.1	1294	92.2	1059	104.4	735	110.4	*	116.8	-	-
	2750		1905	49.8	1765	76.5	1647	89.8	1471	103.2	1235	116.6	912	123.1	*	130.4	-	-
	3000		2096	56.3	1953	85.5	1824	100.0	1647	114.6	1412	129.2	1088	136.4	*	144.5	BO	149.3

\* The RB-DV family can operate at vacuum levels up to 93% below atmospheric pressure. Flow values can vary greatly at vacuum levels below 85% atmospheric pressure; please contact customer service for specific flow calculations based on site conditions.

QG = Volume displacement BO = Blank off

## RB-DV 125 PACKAGE AIR INJECTION VACUUM BLOWER

### DIMENSIONS Imperial



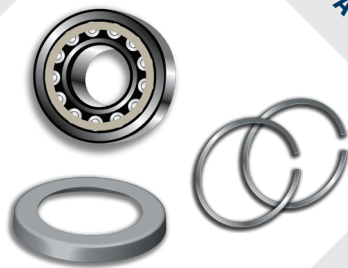
### PERFORMANCE CHART

BLOWER	SPEED RPM	WEIGHT LBS	30% 9 INHG		50% 15 INHG		60% 18 INHG		70% 21 INHG		80% 24 INHG		85% 25.5 INHG		90% 27 INHG		93% 28 INHG	
			CFM	BHP	CFM	BHP	CFM	BHP	CFM	BHP	CFM	BHP	CFM	BHP	CFM	BHP	CFM	BHP
MODEL  125	1070	1334	1276	31.4	1118	51.2	1000	61.1	882	70.9	588	80.8	-	-	-	-	-	-
	1200		1466	35.6	1294	65.3	1206	69.0	1076	80.0	782	91.1	-	-	-	-	-	-
	1340		1671	40.5	1512	60.3	1412	77.7	1265	90.0	988	102.4	488	108.7	-	-	-	-
	1500		1904	46.2	1747	74.0	1647	87.9	1471	101.7	1224	115.6	706	122.6	-	-	-	-
	1680		2167	53.2	2012	84.2	1912	99.7	1765	115.2	1482	130.8	988	138.6	*	146.7	-	-
	1875		2452	61.1	2294	95.8	2176	113.1	2059	130.5	1765	147.8	1271	156.5	*	165.6	-	-
	2100		2781	71.0	2624	109.9	2529	129.3	2382	148.7	2100	168.2	1600	177.8	*	188.3	-	-
	2200		2927	75.7	2765	116.4	2706	136.7	2529	157.0	2235	177.4	1765	187.6	*	198.6	-	-
	2400		3219	85.6	3000	130.0	2941	152.2	2765	174.5	2441	196.6	1924	207.7	*	219.8	-	-
	2600		3511	95.5	3225	143.6	3176	16.7	3001	192	2647	215.8	2083	227.8	*	241	BO	247

\* The RB-DV family can operate at vacuum levels up to 93% below atmospheric pressure. Flow values can vary greatly at vacuum levels below 85% atmospheric pressure; please contact customer service for specific flow calculations based on site conditions.

QG = Volume displacement BO = Blank off

BEARINGS, PISTON  
RINGS & SHAFT SEALS



AVAILABLE SPARE PARTS:

GASKETS & SIGHT GLASS



HIBON LUBE 1L/QUART



# hibon®


[www.hibon.com](http://www.hibon.com)

**Hibon Inc.**

100 Voyageur  
Pointe Claire Quebec,  
Canada  
H9R 6A8

[www.hibon.com](http://www.hibon.com)

©2026 Hibon Inc.  
All Rights Reserved. Printed in U.S.A.  
HIB-RB-DV-PACKAGE 1st Ed. 1/26

 Please recycle after use.

**IR** Ingersoll Rand®