



Air injection Vacuum Blower Siav/h8902

Hibon Ingersoll Rand is known for always designing innovative technologies that give you peace of mind. The SIAV/H series air-injected, high-vacuum blowers offer a wide range of design features and incorporate energy efficiency improvements, complying with the strictest operational requirements of a variety of applications. These high-vacuum blowers are ideally suited for the rigorous demand of the vacuum truck market. Hibon is a worldwide leader in three-lobe positive displacement blower technology with thousands of units installed around the globe.

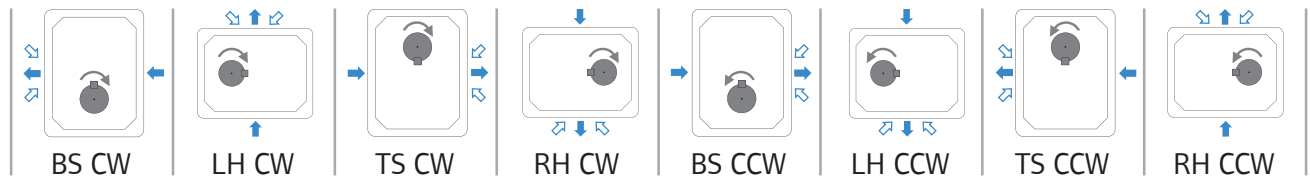
Characteristics

- Three-lobe impeller construction
- Unique air injection system
- Increased efficiency
- High performance sealing arrangement using 3 piston rings

Benefits

- Quieter operation than two-lobe impeller construction
- Allows high vacuum including “dead end” operation without overheating
- No oil or water cooling system (100% oil free air)
- Requires less horsepower for the same performance
- Runs cooler

Configurations



Configuration	Without feet	With feet
BS CW	.	F1869200101
LH CW	.	F1870200101
TS CW	.	F1868200500
RH CW	.	F1871200202
BS CCW	.	F1868200100
LH CCW	.	F1870200200
TS CCW	.	F1869200501
RH CCW	.	F1870200102

- ↻ Shaft rotation
- ➡ Air flow
- ⇄ Air injection
- RH = Right hand shaft
- LH = Left hand shaft
- BS = Bottom shaft
- TS = Top shaft
- CW = Clockwise rotation
- CCW = Counter clockwise rotation

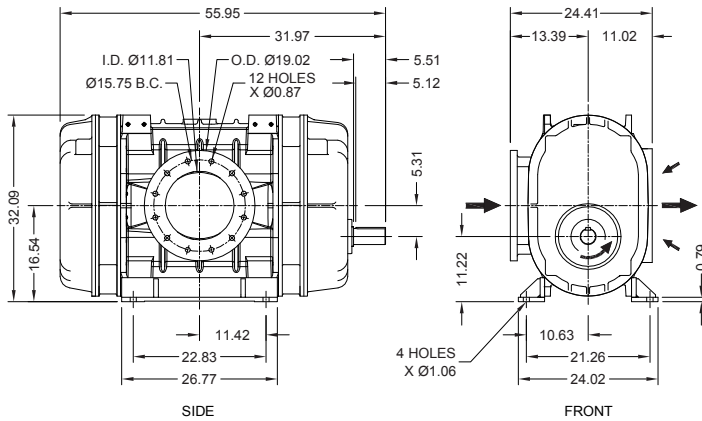
Performance chart

VOLUME DISPLACEMENT (6600 CFM)*																			
Speed (RPM)	6" HG		9" HG		12" HG		15" HG		18" HG		21" HG		24" HG		27" HG		28" HG		
RPM	CFM	BHP	CFM	BHP	CFM	BHP	CFM	BHP	CFM	BHP	CFM	BHP	CFM	BHP	CFM	BHP	CFM	BHP	
800	2262	36	2232	52	2181	64	2009	84	1846	97	1648	115	1095	131	BO	148			
1200	3521	54	3475	78	3395	98	3267	126	3197	146	3063	173	2354	197	1085	222			
1400	4151	64	4097	91	4003	115	3916	146	3763	166	3536	200	2984	230	1716	258			
1600	4780	72	4717	103	4609	131	4526	168	4390	193	4167	230	3613	263	2344	294			
1800	5409	82	5338	118	5215	150	5156	189	5025	221	4795	258	4242	294	2974	332			
2000	6352	95	5952	129	5815	166	5778	220	5654	248	5707	301	5126	344	3790	387	BO	401	

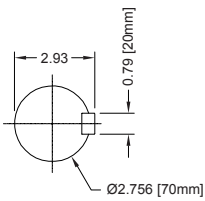
* Volume displacement at maximum speed. BO = Blanked off

SIAV/H 8902 Dimensions

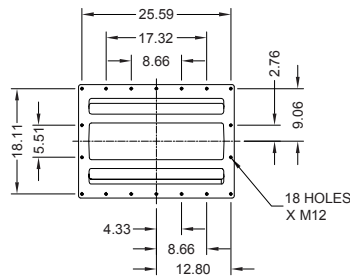
Configuration BS CCW



SHAFT DETAILS



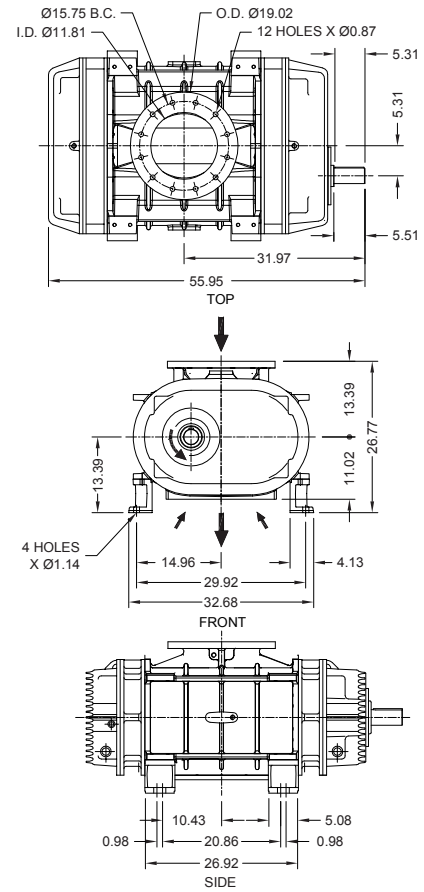
DISCHARGE FLANGE



NOTES:

1. ENGLISH UNITS (INCH) UNLESS OTHERWISE NOTED.
2. WEIGHT: 2623 lbs.
3. C.W. SHAFT ROTATION ALSO AVAILABLE ON REQUEST.
4. DO NOT USE FOR CONSTRUCTION.
5. Other configurations also available on request

Configuration LH CCW



Spare parts and accessories

KIT 1 - STANDARD MAINTENANCE KIT	KIT 2 - SET OF RING HOLDERS	KIT 3 - SET OF GEARS	MANIFOLD AND DISCHARGE/INJECTION MANIFOLD GASKETS	HIBON LUBE
<p>Contains all parts required for 40 000 h. maintenance</p>				

For more information about spares and accessories, contact your nearest Service Center or Ingersoll Rand - HIBON company.

Compressed Air Systems and Services
 Hibon Inc
 100 Voyageur Pointe Claire, Quebec
 Canada, H9R 6A8
 Tel: +1 514 631-3501
 Fax: +1 877 584 0307
 www.hibon.com www.ingersollrand.com

Ingersoll Rand (NYSE:IR) advances the quality of life by creating comfortable, sustainable and efficient environments. Our people and our family of brands—including Club Car®, Ingersoll Rand®, Thermo King® and Trane®—work together to enhance the quality and comfort of air in homes and buildings; transport and protect food and perishables; and increase industrial productivity and efficiency. We are a \$13 billion global business committed to a world of sustainable progress and enduring results.

ingersollrandproducts.com
 We are committed to using environmentally conscious print practices

Ingersoll Rand Air Solutions Hibon®
 2 avenue Jean-Paul Sartre, 59290 WASQUEHAL France
 Tel: +33 (0)3 20 45 39 39
 Fax: +33 (0)3 20 45 39 20 (Fax Service)
 www.hibon.com www.ingersollrand.com
 email : hibon@irco.com



©2018 Ingersoll-Rand Company