

SVT SERIES

OIL SCREW VACUUM PUMP

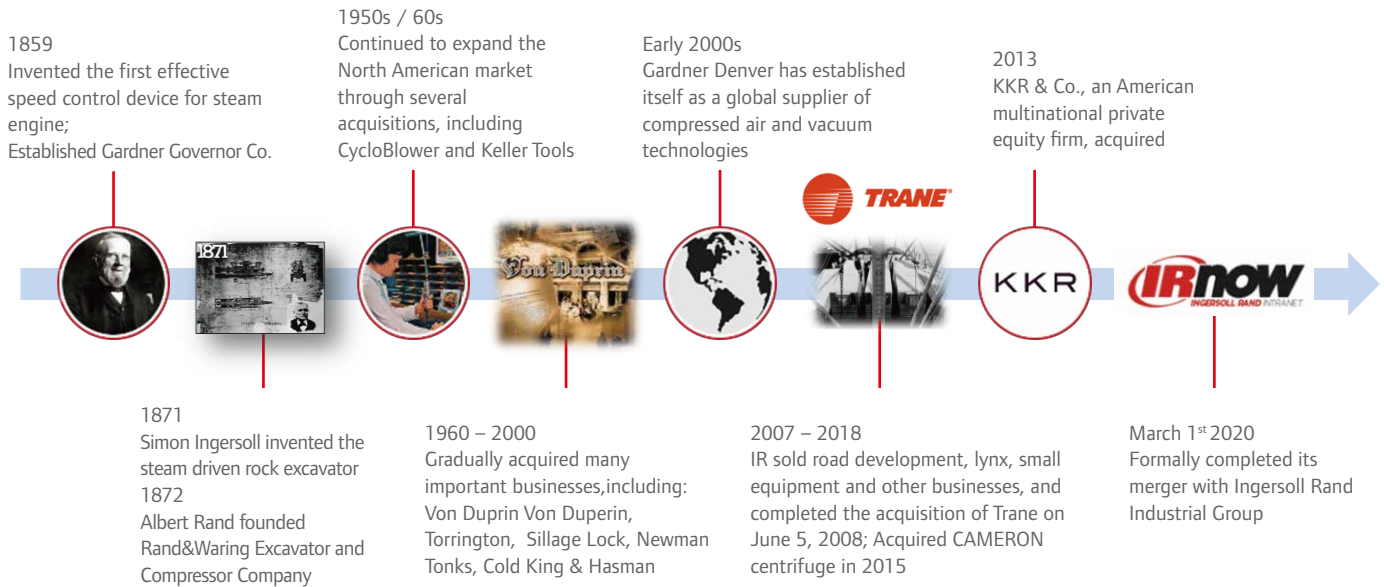
7.5-90 kW VARIABLE SPEED



Ingersoll Rand

Ingersoll Rand Inc. (NYSE:IR), driven by an entrepreneurial spirit and ownership mindset, is dedicated to Making Life Better for our employees, customers, shareholders, and planet. Customers lean on us for exceptional performance and durability in mission-critical flow creation and industrial solutions. Supported by over 80+ respected brands, our products and services excel in very complex and harsh conditions. Our employees develop customers for life through their daily commitment to expertise, productivity, and efficiency. For more information, visit www.IRCO.com.

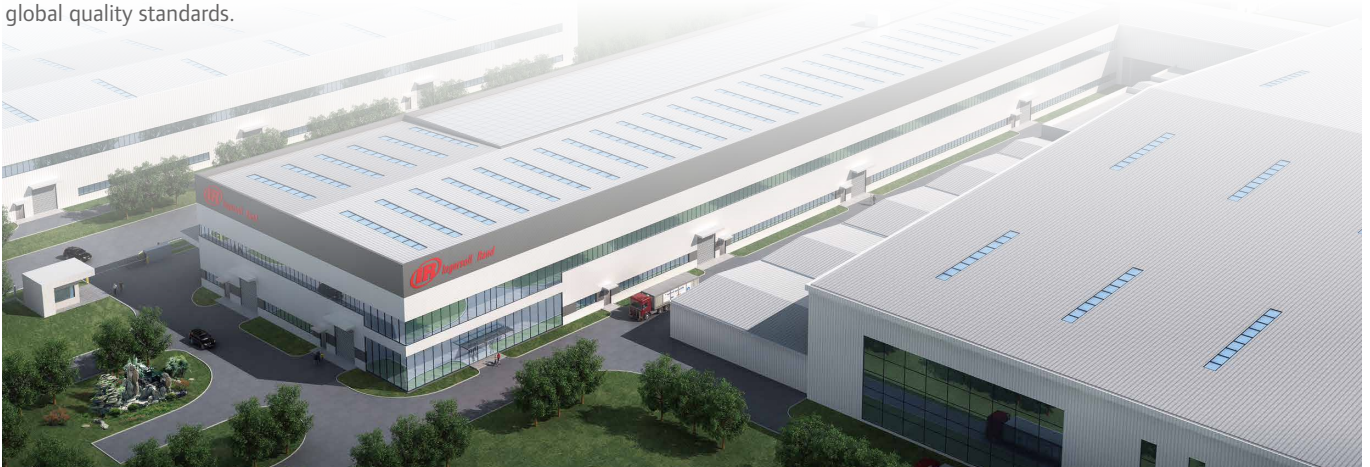
Ingersoll Rand's brands include Ingersoll Rand, Gardner Denver, Elmo Rietschle, Robuschi and dozens of other well-known enterprises in the field of air compressors, blowers and vacuum pumps.



Ingersoll Rand Wujiang Campus

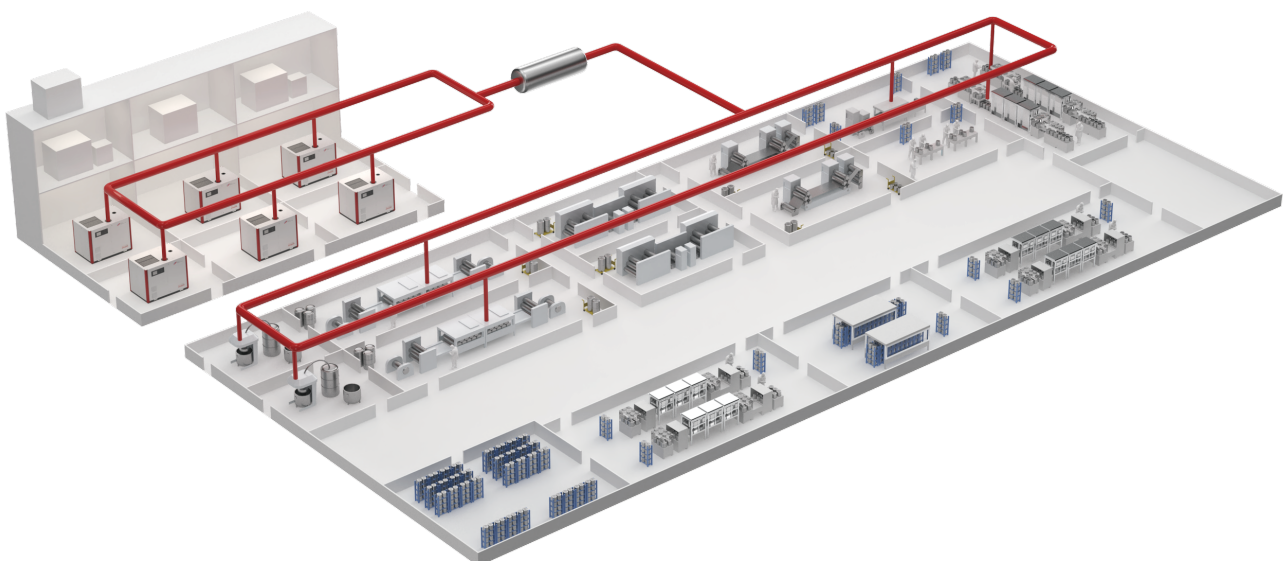
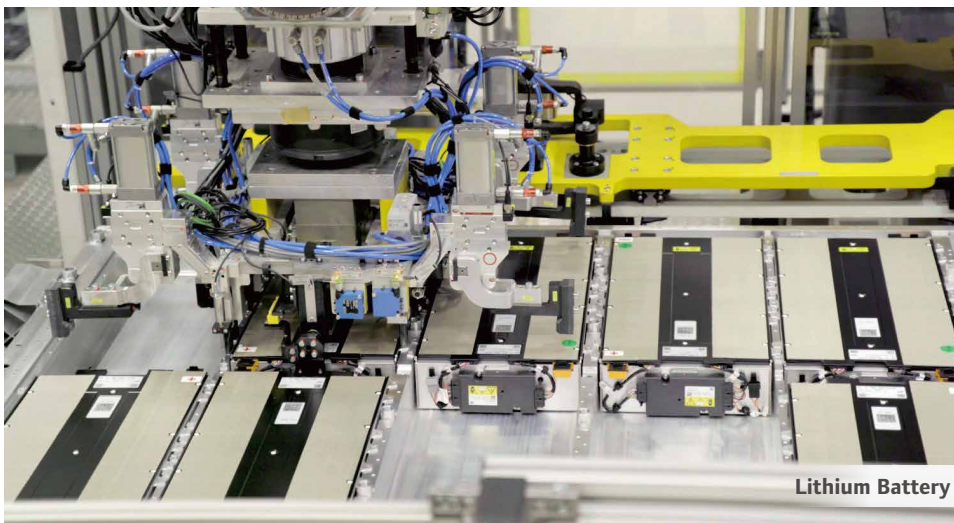
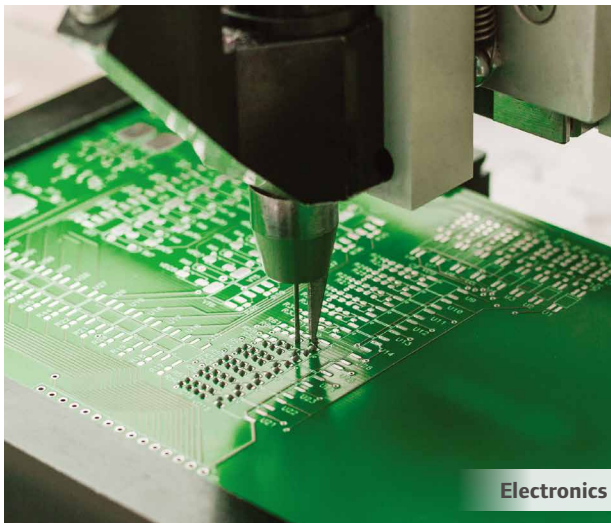
The largest Ingersoll Rand factory globally is located in the Wujiang Industrial Park in Suzhou China, covering an area of 230,000 square meters with a building area of 91,000 square meters. It employs over 700 staff members. The production, quality inspection, and quality control of products are completed at the Ingersoll Rand Wujiang Industrial Park. As a world-class integrated enterprise, the Wujiang Campus provides first-class services for different business groups and partners, with the vision of good customer experience, excellent manufacturing process, first-class product quality, attitude of continuous improvement and high employee satisfaction.

The whole production line processes for SVT series vacuum pumps will be completed in Ingersoll Rand's Wujiang Campus. Supplier on-site assessments, production part approval processes, incoming material quality control, warehouse inventory management, production manufacturing processes, testing and inspection, finished product quality control, shipment quality control, and warranty are all strictly based on Ingersoll Rand's global quality standards.



Applications

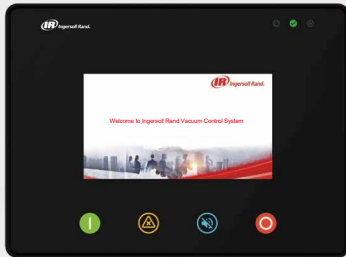
Large Central Vacuum System



* Illustration of the Central Vacuum System Application in a Lithium Battery Factory

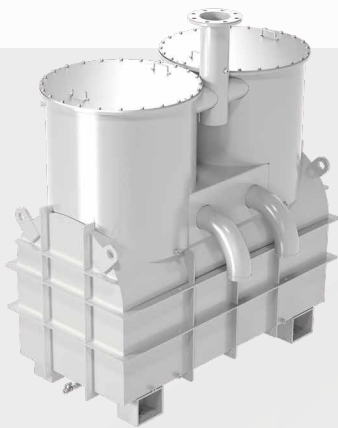
An Ideal Choice for Central Vacuum System

Timing Control for Smart Operation



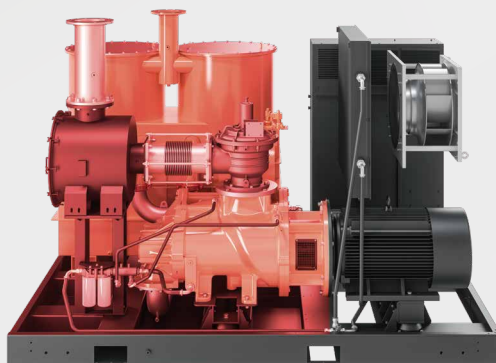
1 Smart Control System

- More adaptable to actual working conditions in vacuum applications
- Energy saving up to 50% on average
- Elimination of peak impulse current
- High efficiency up to 97.5%



2 Oil Separator with Optimized Structure

- Patented 3-stage oil separation
- Prolonged service life
- Much lower power consumption
- Significantly improved efficiency
- Easier maintenance



Hot section

Cold section

3 Cold / Hot Section Arrangement

- Hot section prevents water vapour condensation contaminating the oil
- Cool section ensures optimum cooling for motor and controls, increasing reliability
- Extended service life of electrical components
- Better noise control
- Intelligent electric thermostatic valve on water cooled version

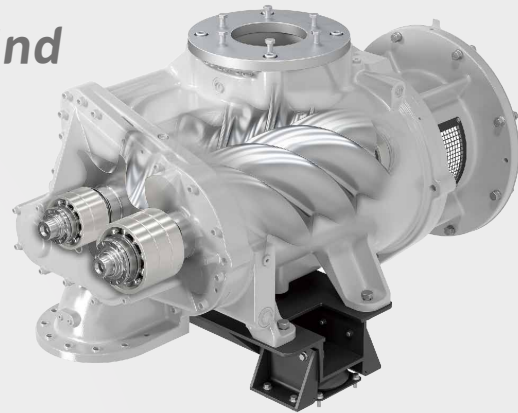
High Efficiency & Low Carbon

High Reliability for Peace of Mind



6 High Quality Airend

- High flow rate & Energy efficiency
- Smooth running with low vibration level



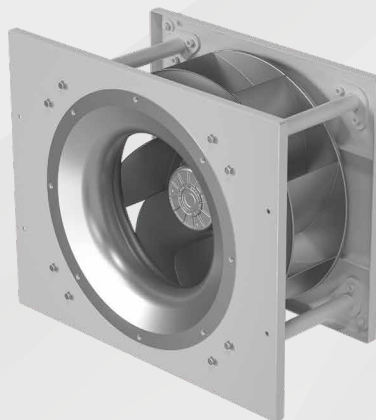
5 Special Ingersoll Rand Motor with High Reliability

- Rotex coupling with a special design
- Class F insulation
- Over-sized motor bearing for steady and reliable operation



4 Variable speed, high efficiency cooling fan maintains correct temperatures with minimal energy consumption

- Low noise and high performance
- Superior cooling effect
- Saving more energy



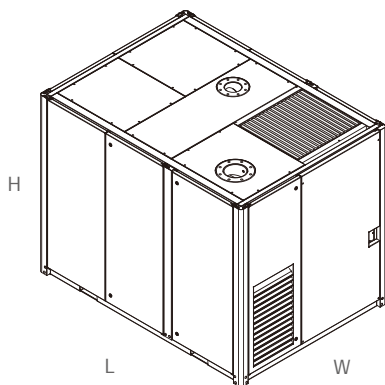
Specifications

Parameter	SVT600	SVT800	SVT1000	SVT1500	SVT1800	SVT2000	SVT3000	SVT4000	SVT4500	SVT5400	SVT6000
Max. Capacity* (m ³ /h)	605	735	905	1,386	1,672	1,936	3,135	3,830	4,310	5,335	5,740
Motor Rating (kW)	7.5	11	15	22	30	37	45	55	75	75	90
Noise* (dB(A))	68	75	78	75	78	78	80	80	83	84	85
Oil Capacity (L)	18	22	22	41	41	41	90	90	90	120	120
Total Weight (kg)	741	890	933	1,560	1,620	1,660	3,552	3,608	3,773	5,057	5,631
Supply Power Frequency (Hz)	50\60	50\60	50\60	50\60	50\60	50\60	50\60 ⁽³⁾	50\60 ⁽³⁾	50\60 ⁽³⁾	50\60 ⁽³⁾	50\60 ⁽³⁾
Cooling Method	AC\WC	AC\WC	AC\WC	AC\WC	AC\WC	AC\WC	AC\WC	AC\WC	AC\WC	AC\WC	AC\WC

(1) The speed is measured by the laboratory as per ISO21360-2:2012(E).

(2) Noise as per ISO2151:2004 under ideal conditions.

(3) 60hz option (Non-Standard)



Model	L(mm)	W(mm)	H(mm)
SVT600	1,390	960	1,554
SVT800 SVT1000	1,530	1,060	1,520
SVT1500 SVT1800 SVT2000	2,040	1,360	1,730
SVT3000 SVT4000 SVT4500	3,150	1,950	2,230
SVT5400 SVT6000	3,350	2,250	2,250

After-sales Service

We Keep An Eye on every machine in use

We Pay Great Attention to the user experience of every customer

We Care About the customers return on investment of every plant

Ingersoll Rand provides comprehensive after-sales services, including but not limited to preventative & scheduled maintenance program, genuine parts, onsite inspection, expert maintenance, customer visits and effective professional training, just to make sure that every product runs well at optimal performance for your peace of mind.



Project Case Study



An Electronics Company in Dalian

Ingersoll Rand SVT series oil screw vacuum pump offers a wide range of flow rate to maximally meet the process requirements for optimized design and footprint, saving energy and resources, and reducing unnecessary expenses and operating cost.

A Battery Company in Chongqing

The required flow rate varies widely for different processes in this new lithium battery production line project, wherein the back-end process under concentrated vacuum has extremely large requirement for flow rate. Ingersoll Rand SVT series oil screw vacuum pump provides an energy-saving solution with higher efficiency for our customers.



Ingersoll Rand Vacuum Product Line

Dry Rotary Vane Pump



Vacuum

- Max. flow rate: 154m³ /h
- Ultimate vacuum: 150mbar(abs)

Pressure

- Max. flow rate: 154m³ /h
- Max. pressure: 2.2bar

Claw Pump



Vacuum

- Max. flow rate: 1,200m³ /h
- Ultimate vacuum: 150mbar(abs)

Pressure

- Max. flow rate: 600m³ /h
- Max. pressure: 2.2bar

Side Channel



Vacuum

- Max. flow rate: 3,000m³ /h
- Pressure difference: -800mbar

Pressure

- Max. flow rate: 3,000m³ /h
- Pressure difference: +1.1bar

Oil Rotary Vane Pump

- Max. flow rate: 1,353m³ /h
- Ultimate vacuum: 0.1mbar(abs)



Roots Pump

- Max. flow rate: 7,665m³ /h
- Pressure difference: 65mbar



Dry Screw Pump

- Max. flow rate: 1,100m³ /h
- Ultimate vacuum: 0.003mbar(abs)



Oil Vacuum Pump

- Max. flow rate: 5,740m³/h
- Ultimate vacuum: <1 mbar(abs)



Vacuum System Solutions



 **Elmo Rietschle**
An Ingersoll Rand Business

www.gardnerdenver.com/elmorietschle

For SE Asia region, please contact
sales.sg@irco.com

For Australia, please contact
sales.au@irco.com