

Centrifugal Reman

Adhering to the concept of sustainable development, Ingersoll Rand's centrifugal remanufacturing process utilizes specialized techniques and new technologies to perform a new manufacturing process based on the original one. This revitalizes old machinery, achieves energy savings and environmental protection, and extends the lifecycle of the machines!



Customer Needs

When your compressor has been in operation for many years:

- Deterioration of the unit's efficiency
- Deterioration of reliability and increased failure rate of the unit
- High energy consumption and need for energy savings
- Difficulty in obtaining parts for some old models
- Changes in demand at the airend
- Relocation of old units
- Need for heat recovery and energy-saving reman
- Technical transformation projects

Business Scope

Ingersoll Rand Centac and TA/NX Centrifugal Compressors

Airend	Motor	Machine
Rotor dynamic balancing	Motor maintenance	On-site overhaul
Airend overhaul	Motor overhaul	Back-to-factory overhaul
Airend upgrade/exchange	Motor upgrade	

A New Experience with Centrifugal Reman



Reduce Operating Cost

- Improve unit efficiency
- Reduce energy consumption
- Minimize downtime



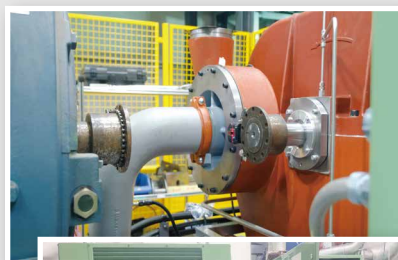
Enhance Reliability

- Original design, original parts
- Comprehensive inspection of core components
- Factory testing to ensure performance



Enhance Productivity

- Standardized operations, simplified processes
- Fixed budget, reduced reconfirmation
- On-site airend exchange, quick and easy

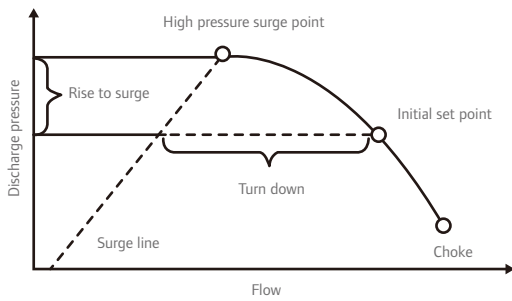


- Professional evaluation and non-destructive disassembly
- Failure analysis and precise troubleshooting
- Core components and comprehensive inspection
- Original factory standards, quality first
- Performance testing before shipping
- Customized services are tailored to various needs

Centrifugal Airend Reman and Exchange Service

Ingersoll Rand will assess your actual operating conditions, flow rate, and pressure requirements to optimize your current compressor. Based on this assessment, we will reset running parameters and remanufacture a centrifugal airend that meets your current operating conditions, which will then be sent to your site for replacement.

Ingersoll Rand's Centrifugal airend reman and replacement service will become your top choice!



Airend Reman

	Airend Overhaul	Airend Exchange
Performance	Only repair or exchange damaged parts, with no commitment to performance.	Meet new operating conditions, with guaranteed performance
Testing	Mechanical testing	Mechanical testing + Performance testing
Cycle	Downtime and maintenance cycles are relatively long	The customer's original airend can continue to operate until the exchange airend arrives at the site for exchanging
Price	Not fixed	Fixed



Ingersoll Rand Inc. (NYSE:IR), driven by an entrepreneurial spirit and ownership mindset, is dedicated to Making Life Better for our employees, customers, shareholders, and planet. Customers lean on us for exceptional performance and durability in mission-critical flow creation and industrial solutions. Supported by over 80+ respected brands, our products and services excel in very complex and harsh conditions. Our employees develop customers for life through their daily commitment to expertise, productivity, and efficiency. For more information, visit www.IRco.com.

Distributed by:

Actual Cases

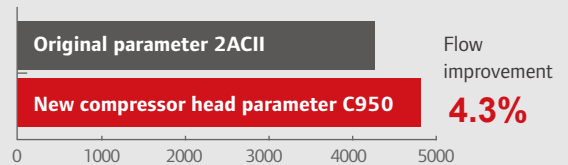
Ingersoll Rand has always been committed to providing products and solutions to meet all your compressed air needs



Would You Like It to Be Like This?

Performance Comparison Before and After Airend Exchange for a Customer

Inlet flow (CFM)



Shaft power (kW)

