



MXS Centrifugal Compressor Controller

Optimize Your Centrifugal Compressor Performance

The MXS Controller, part of the MAESTRO family, delivers next-generation control for centrifugal compressors. Built for demanding industrial environments, it combines intuitive operation, robust connectivity, and advanced logic to maximize uptime and efficiency.

Why Upgrade to the MXS Controller?

Integrated Sequencing & Legacy Control

Coordinates multiple compressors for optimal load sharing and energy savings.

Legacy Compatibility

Seamlessly replaces Universal and Xe145F controllers for easy retrofit.

Predictive Maintenance

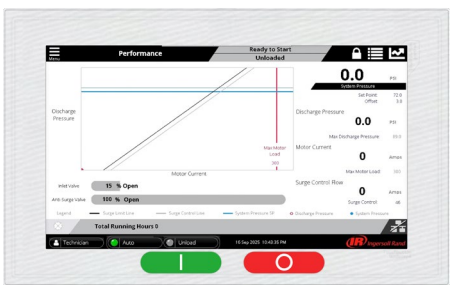
Historical data logging and alarm history help prevent costly failures.

Future-Ready Architecture

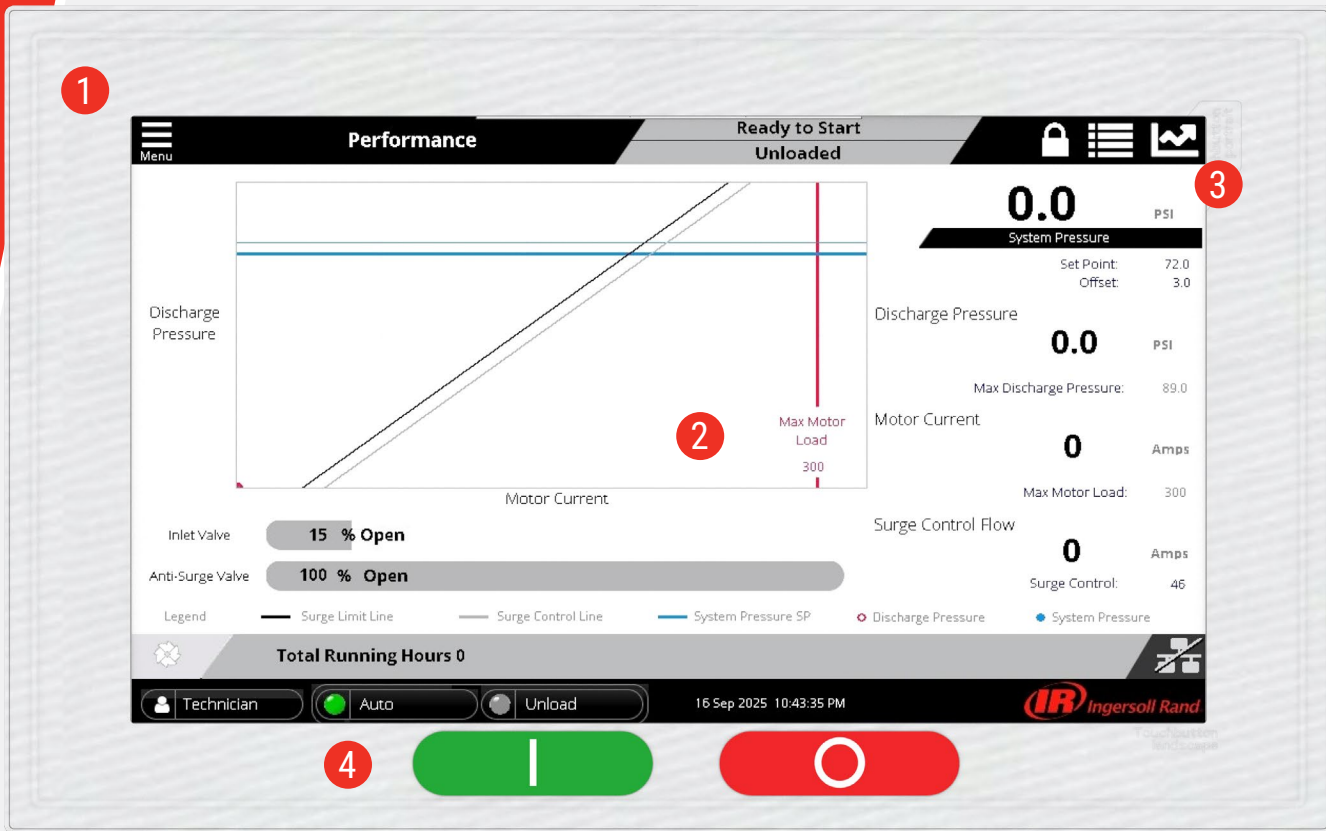
Embedded web server and IoT connectivity prepare your system for Industry 4.0.

Available for New Machines and Retrofit

Upgrade older centrifugal compressors to the MXS Controller for enhanced reliability and connectivity.



Home Page



1. 10.1" 16:9 Industrial Touchscreen Display
2. Real-Time Performance Graph: Visualize discharge pressure and motor load instantly for proactive adjustments.
3. IoT cloud access: Factory-standard connectivity enables remote monitoring and predictive maintenance through your customer portal.
4. Start/Stop Control

Connectivity & Communication

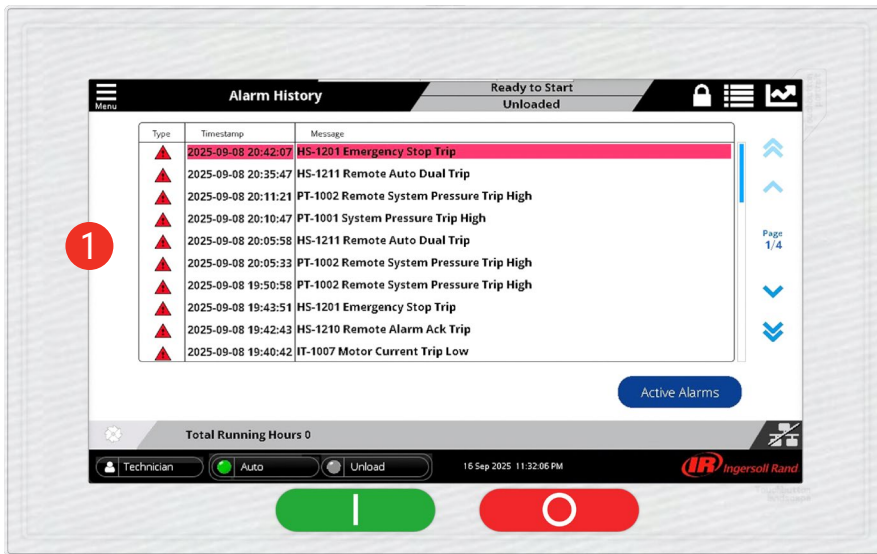
- Ethernet, USB, RS485
- MODBUS TCP/IP & RTU
- Embedded web server for remote access

Advanced Control Logic

- Integrated Sequence Control
- Integrated Legacy Sequencing
- Trip protection with voting logic

IoT & Monitoring

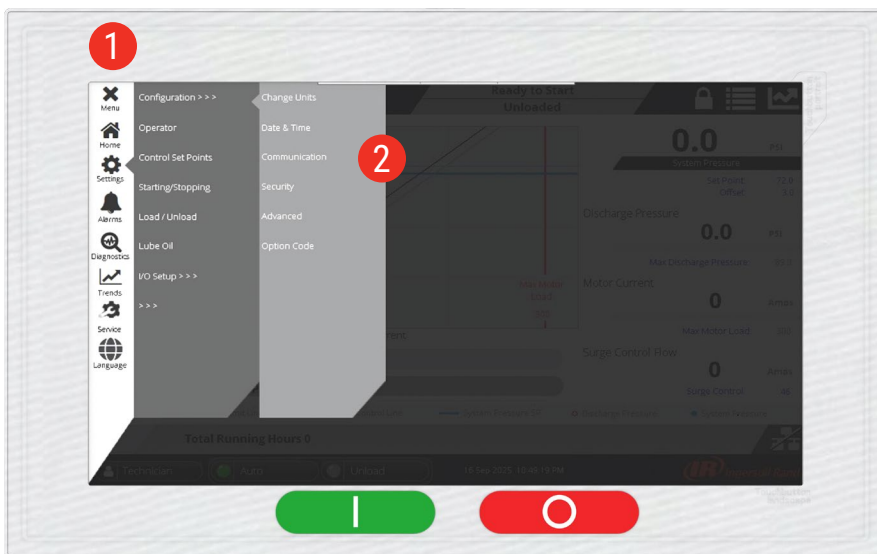
- Factory-standard cloud access
- USB service tool connection
- Historical data logging



Alarm History

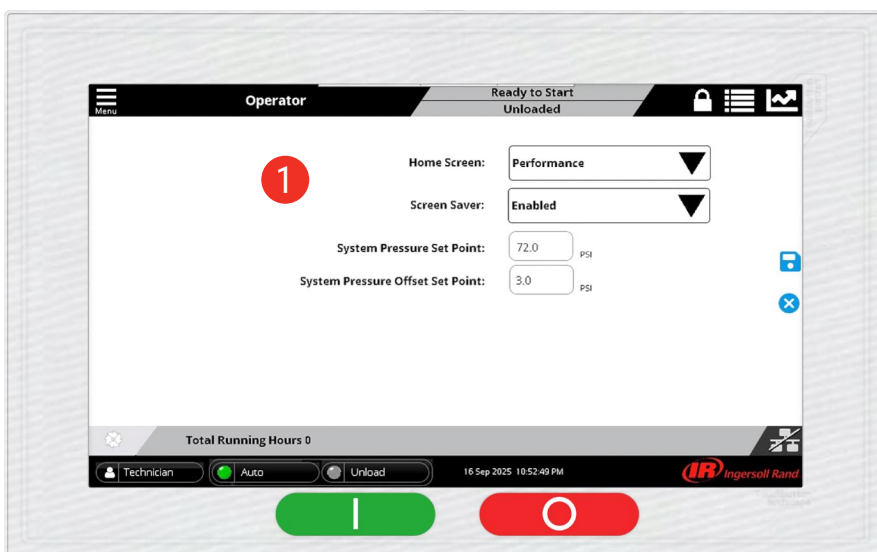
Track and resolve issues quickly

1. History insights for performance improvements and energy efficiency available through additional services



Menu Page

1. Navigation options
2. Parameter list



Advanced Settings

1. Advanced menu options to optimize performance

Ready to update the technology on your machine and get greater control?

CONTACT US TODAY.



About Ingersoll Rand Inc.

Ingersoll Rand Inc. (NYSE:IR), driven by an entrepreneurial spirit and ownership mindset, is dedicated to helping make life better for our employees, customers and communities. Customers lean on us for our technology-driven excellence in mission-critical flow creation and industrial solutions across 40+ respected brands where our products and services excel in the most complex and harsh conditions. Our employees develop customers for life through their daily commitment to expertise, productivity and efficiency. For more information, visit www.IRCO.com.

ingersollrand.com



Member of Pneurop



Ingersoll Rand, IR, the IR logo, PAC, PackageCARE, PartsCARE, PlannedCARE, V Shield and SimplAir are trademarks of Ingersoll Rand, its subsidiaries and/or affiliates. All other trademarks are the property of their respective owners.

Ingersoll Rand compressors are not designed, intended or approved for breathing air applications. Ingersoll Rand does not approve specialized equipment for breathing air applications and assumes no responsibility or liability for compressors used for breathing air service.

Nothing contained on these pages is intended to extend any warranty or representation, expressed or implied, regarding the product described herein. Any such warranties or other terms and conditions of sale of products shall be in accordance with Ingersoll Rand's standard terms and conditions of sale for such products, which are available upon request.

Product improvement is a continuing goal at Ingersoll Rand. Any designs, diagrams, pictures, photographs and specifications contained within this document are for representative purposes only and may include optional scope and/or functionality and are subject to change without notice or obligation.

We are committed to using environmentally conscious print practices.

© 2025 Ingersoll Rand IRITS-1125-000 1125