



## ENGINEERED SCREW AIR AND GAS PACKAGES

OVER 60 YEARS OF EXPERIENCE MANAGING  
AND IMPLEMENTING ENGINEERED TO-ORDER  
AIR AND GAS PACKAGES FOR COMPLEX  
TECHNICAL REQUIREMENTS



REQUEST A QUOTE

Engineered Systems and Services  
[www.ingersollrand.com/air-compressor-systems](http://www.ingersollrand.com/air-compressor-systems)

©2025 Ingersoll Rand. All Rights Reserved.  
All trademarks are the property of Ingersoll Rand.



# Contents

---

## 01 Introduction

- 1.1 Ingersoll Rand Profile
- 1.2 Our Scope
- 1.3 Industries

## 02 Added Values

- 2.1 Our Added Values at a Glance
- 2.2 Expertise in EPC Contracts
- 2.3 Project Management
- 2.4 Installation Solutions
- 2.5 Turnkey Installations
- 2.6 Quality Standards
- 2.7 Global Presence
- 2.8 References

## 03 Products

- 3.1 Air Compressor Packages
  - 3.1.1 Rotary Screw Compressors
  - 3.1.2 Reciprocating Compressors
- 3.2 Gas Compressor Packages
  - 3.2.1 Screw Gas Compressor Packages
  - 3.2.2 Gas-end Compressor Blocks
- 3.3 Air Dryer Packages
  - 3.3.1 Adsorption Air Dryers
  - 3.3.2 Refrigerant Air Dryers
- 3.4 Nitrogen Generation Packages
  - 3.4.1 PSA Systems
  - 3.4.2 Membrane Systems

## 04 Aftermarket & Service

## 05 Engineered Systems and Services (ESS)

## 06 Contact details

# 01 Introduction



# 1.1 Ingersoll Rand Profile

**Ingersoll Rand is a global market leader with a broad range of innovative and mission-critical air, fluid, energy, specialty vehicle and medical technologies, providing services and solutions to increase industrial productivity and efficiency.** Since merging with Gardner Denver in early 2020, we have more than 300 years of combined experience and innovative expertise.

Today's Ingersoll Rand brands offer market-leading solutions and services to help make life better. Customers rely on our proven products in a variety of industries and markets across the globe. Ingersoll Rand's diverse and innovative products range from complete air compressor systems, tools, ARO pumps, material handling systems and more. The market sectors served by Ingersoll Rand are primarily industrial manufacturing, transportation, energy, mining, construction, environmental, food and beverage, and more.

We take pride in our products and work tirelessly to ensure that they meet and exceed the growing demands of the industries we serve. That is why our customers return to us, our brands are ready to serve your needs for support on applications, products, service and warranty.





## 1.2 Our scope

Through the years, we have developed our know how and ability to support our customers globally, and today we are able to provide a range of **bespoke services**. As a company, we will continue to offer a full suite of **solutions for Air and Gas with the following products in scope:**

### 1. Air Compressors

- Screw Compressors
- Centrifugal Compressors
- Reciprocating Compressors
- Rotary Vane Compressors
- High Pressure Products
- Reciprocating Compressors

### 2. Air Treatment

- Desiccant Air Dryers (Heatless, External Heater and Non-purge)
- Refrigerant Dryers

### 3. Nitrogen Generation

- PSA Systems
- Membrane Systems





# 1.3 Industries

With more than a century of application experience and a range that covers every major technology, we can advise on, design, and supply the right machine **for a range of industries:**

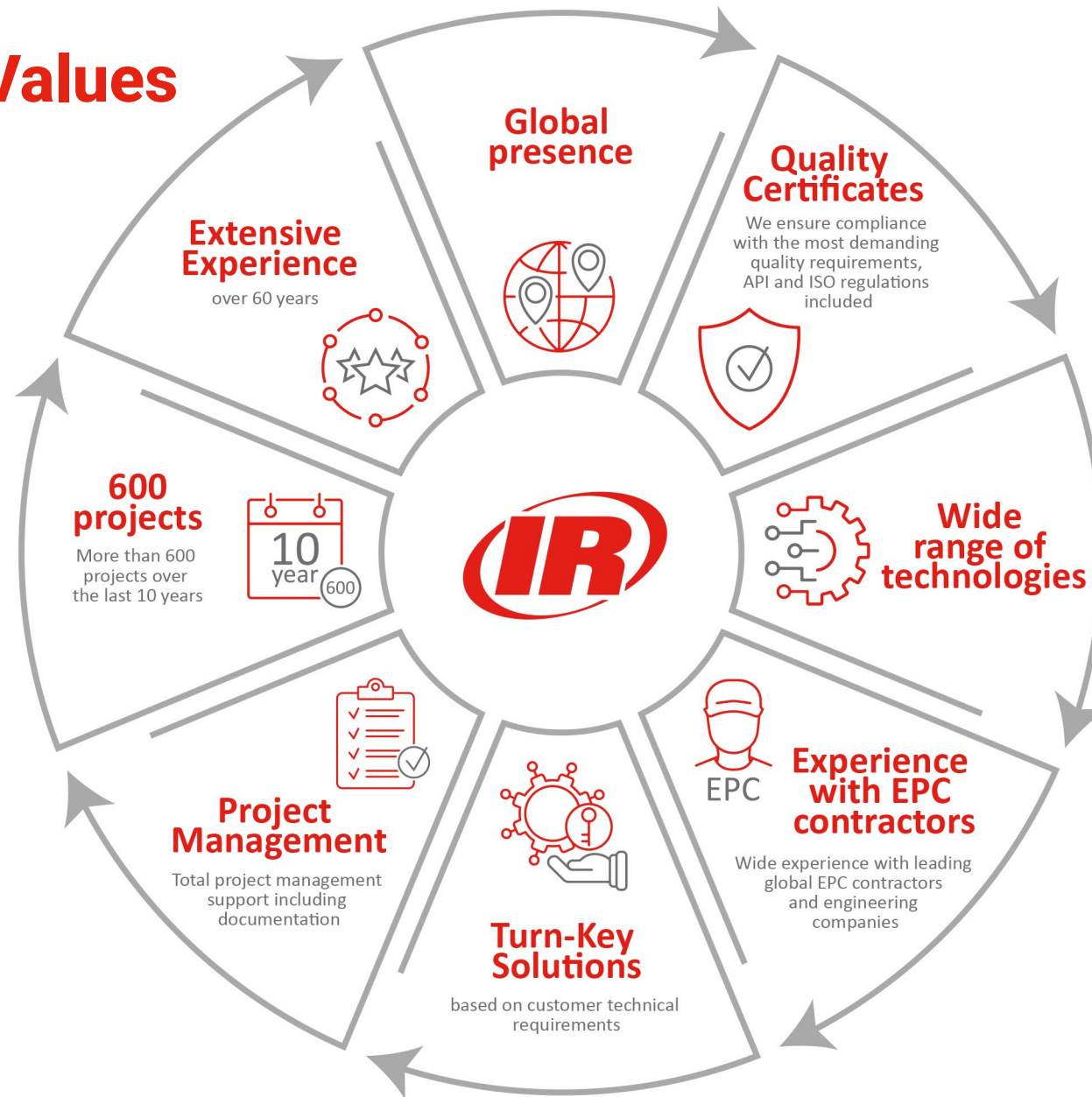
- **Power Generation:** hydroelectric, nuclear, coal, cogeneration, gas, renewable energy plants, waste-to-energy and others.
- **Oil & Gas:** onshore, offshore, midstream.
- **Hydrogen Production Plants.**
- **Chemical & Petrochemical:** ammonia, ethanol, sulfuric acid, propane, carbon capture, propylene and others.
- **Water:** water desalination, water treatment and others.
- **Mining:** coal, gold, silver, copper and others.
- **Heavy Industry:** shipbuilding, steel production plants and others.
- **Biogas & Biomethane.**
- **Other Industries.**



# 02 Added Values



## 2.1 Our Added Values at a Glance



## 2.2 Expertise in EPC Contracts

Ingersoll Rand has provided **specialized custom compressed air and nitrogen generation packages to international EPC contractors and engineering companies** across a range of industries.

Using the extensive experience that we have gained by working with EPC companies, Ingersoll Rand has developed the capabilities to carry our complex projects that are tailored to our customers' requirements. Engineered for performance, our range of equipment is built to provide maximum efficiency, reliability and uptime.

We are a leading global business provider, offering custom-made products to satisfy a range of customer needs, based on: **Market to Order (MTO), Engineering to Order (ETO), special configuration and Project Lifecycle Support (PLS) for complex projects and EPC contractors.**



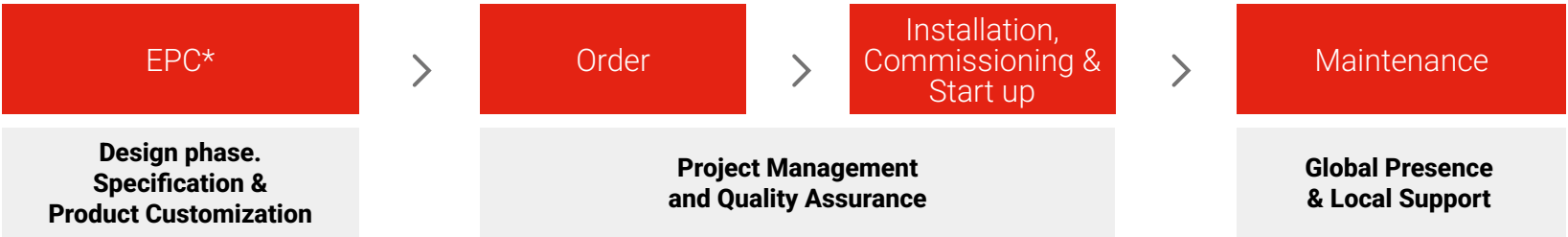


# 2.3 Project Management

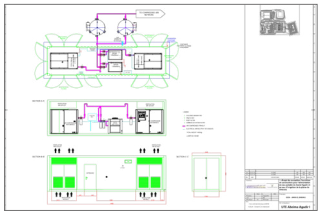
Ingersoll Rand offers a **complete project management service**, including equipment installation and integration services.

Our project management team of expert engineers control **the whole process, from the design through to assembly, commissioning and start-up; including technical & quality management.**

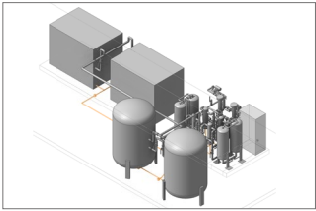
**Ingersoll Rand supports you throughout the project lifecycle.**



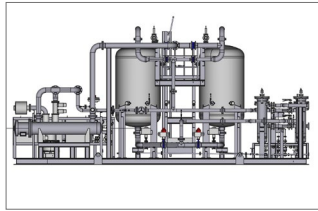
\*Engineering, Procurement and Construction



GAD



3D Model of The Installation



3D Model



## 2.3 Our Standard Project Execution Procedure

### DESIGN



- Basic and detailed design engineering
- Equipment modification to customer requirement
- Project integration
- Quality, environmental and safety management

### PROJECT MANAGEMENT



- Documentation to customer requirements (mechanical, electrical, I&C, quality, logistics, etc.)
- Preparation of as built Drawings: P&ID, general arrangement, sectional drawings and 3D modelling
- Complete assembly of the package, including piping and control of the installation (PLC)
- Preparation of Installation, operation and maintenance manuals
- Protection against severe ambient conditions
- Purchasing, inspection, expedition and logistics management
- Inspection tests (mechanical, hydrostatic, packing) and final tests

### COMMISSIONING AND START-UP



- Construction, assembly, pre-commissioning, commissioning and start-up
- Marking and packaging of the whole supply
- Shipping
- Customer training

### AFTERMARKET



- Local Support
- Genuine Parts and Lubricants
- Multi-brand Solutions
- Extended warranties
- Remote Monitoring and Preventive Maintenance
- Training & Seminars



## 2.4 Installation Solutions

Ingersoll Rand can custom design and manufacture your equipment package including components such as: structural baseframe, machinery mounting pads, piping, tubing, electrical wiring, instrumentation, and controls. The different installation types are purpose **designed in accordance with customer specifications and applicable ISO/ API standards and to major international codes and standards.**

### Container

- Ambient conditions inside the shelter controlled
- Compact design

### Skid

- Easy transportation
- Connection points with customer at skid edge: inlet/outlet, make-up water drains and electrical supply

### Supply of system components

- Whole installation mounted in our facilities. We have the capability to run the package fully assembled.
- Before transportation, all interconnecting piping and wiring is disassembled



Containerized Air Compressor Packages



Skid Mounted Nitrogen Feed Air Compressor & Dryer Package



Supply of air compressor



## 2.5 Turnkey Installations

At Ingersoll Rand we know that every customer has unique necessities. **Every machine can therefore reflect the particular requirement of each customer.** Ingersoll Rand Air and Nitrogen Packages are also designed to operate in harsh environments. Our equipment is engineered to face the most extreme ambient temperatures and extreme environmental conditions.

### Modifications

A wide variety of options can be customized to meet even the most demanding customer requirements:

- Outdoor Installation
- HAT (55oC ambient temperature)
- MV Motors
- ATEX Certified Motors
- PLC Control Panels
- Special Instrumentation
- ATEX Certification (Zone 2)
- Coolers Design and Materials (Sea Water Cooling)
- Inlet Filters for Ambient Desert Conditions
- Air Ducts & Heaters for Low Ambient Temperatures
- Stainless Steel Canopies
- API 618, API 619 And API 672 Compliant Equipment





## 2.6 Quality Standards

Ingersoll Rand has multiple **quality certificates, issued by different institutions worldwide**. We continually optimize our management systems to supply our customers with high-quality products, service, and solutions tailored to their individual needs.



### API 618

Ingersoll Rand reciprocating compressors meet the requirements of API 618. We custom engineer every unit by designing each cylinder and valve, and select other components to meet API 618 technical requirements.

### API 619

Ingersoll Rand compressor technology is based on the requirements of API 619. These compressors offer a horizontal balanced design, moderate and low speeds and a low operating temperature for reliable operation year after year.

### API 672

Integrally Ingersoll Rand Geared Centrifugal Compressors (IGC) obtained their recognition as a pursuable technology for the critical process gas services thanks to the implementation of a dedicated API 672 – 4th ed. for the application of instrument and utility air compressors.

These compressor and dryer packages were built according to API specifications



Ingersoll Rand has a long tradition of providing solutions tailored for explosive environments. As specialists in compressor technologies, protection within different ATEX and IECEx-zones is part of our day-to-day business. We have many years of expertise in providing IECEx certified air-cooled oil-free screw and ATEX certified air-cooled oil injection screw compressors. In addition, we deliver certified instrumentation, ATEX certified PLC control panel, pneumatic operated LCP for air dryers, explosion proof certified junction boxes, cable glands and IS barriers.



## 2.7 Global Presence

**We are committed to providing our global customer base with around the clock care and support.**

With innovative products and services, Ingersoll Rand team works with our customers to solve even the toughest technical challenges. Via our group's global network, we make sure that the decades of knowledge and expertise gained working on complex EPC projects is made available to each and every EPC contractor and end-user working on your project.

As one of the world's largest manufacturers of engineered air compressors, air treatment, and nitrogen packages; Ingersoll Rand is represented by a comprehensive network branches and authorized partners in over 50 countries.



## 2.8 References

Engineering Project solutions has supplied its special packages for nitrogen or instrument air to many renowned global international EPC contractors and engineering companies in power generation, also in other industries such as oil & gas, chemical, water treatment, and mining industries.

We have supplied more than 600 customized projects over the last 10 years.

**Please ask for the latest version  
of our reference list.**





# 03 Products

# 3.1 Air Compressor Packages

The majority of our air compressor packages are **custom built and shipped with all components**.

Our tailored air compressors are ready for operation, flexible, easy to integrate into any process, help minimize operating costs and prepared to face the strictest quality standards. Ingersoll Rand is your single source solution for engineered air systems for instrument, plant, bulk and nitrogen generation feed air applications.



Operate in the most extreme temperatures. Between -47° to 55°C



Saving floor space. Optimized footprint



Simple "Plug & Play" Installation

## 3.1.1 Rotary Screw Compressors

Our lubricated and oil-free rotary screw compressors incorporate the very latest technological advances and guarantee a continuous supply of high quality compressed air. The screw compression element is designed and manufactured in-house, using the latest CNC rotor grinding machinery.

### Industry Application

Rotary screw compressors are often used to supply vast amounts of air to a large industrial applications. The advanced technology allows the compressor to run continuously, providing a large output of high-quality air flow, perfect for demanding applications in the following sectors:

- Oil & Gas
- Power Generation
- Chemical & Petrochemical
- Mining
- Water Treatment
- Electronic
- Industrial
- Medical & Pharmaceutical
- Others



Oil-free Air Compressor & Dryer Package assembled in a container

TECHNICAL DATA	
• Flow rate (m³/h FAD):	Oil flooded: Up to 4.200 / Oil-free: Up to 5.000
• Operation Pressure (barg):	Oil flooded: 8 ~15 / Oil-free: 8 ~ 10
• Power (kW):	Oil flooded: 2 ~ 400 / Oil-free: 37 ~ 700



Comfortable even when hot

**The air-cooled compressor packages are designed to operate in temperatures of up to 55°C**, working under strenuous conditions either outdoor or indoor, refineries, deserts and sandy environments. These compressors are built to withstand the most extreme temperatures, and so designed to work in challenging environments

[Learn More](#)



# 3.1 Air Compressor Packages

## 3.1.2 Reciprocating Compressors

Our reciprocating compressor packages are known for their excellent energy efficiency. We have consolidated and at the same time consistently developed this proven technology, maintaining its cutting edge, high-quality, robust construction along and excellent efficiency. The result is an improved Return On Investment (ROI) and shorter payback time.

### Industry Application

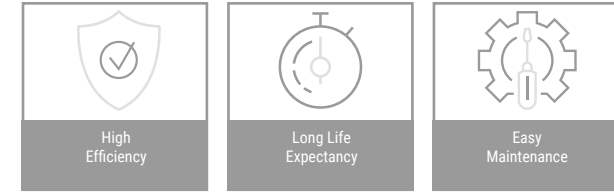
Ingersoll Rand reciprocating air compressors are often served in a wide range of

applications. The most typical types of applications are:

- Oil & Gas
- Power Generation
- Food & Beverage
- Chemical
- Cement
- Pharmaceutical
- Textiles

### TECHNICAL DATA

• <b>Flow rate:</b>	112 m <sup>3</sup> /hr - 3,400 m <sup>3</sup> /hr
• <b>Operating Pressure:</b>	2-90 barg
• <b>Power:</b>	Up to 650 kW



Two sets of Reciprocating Air Compressor Packages on one Common Skid



[Learn More](#)



## 3.2 Gas Compressor Packages

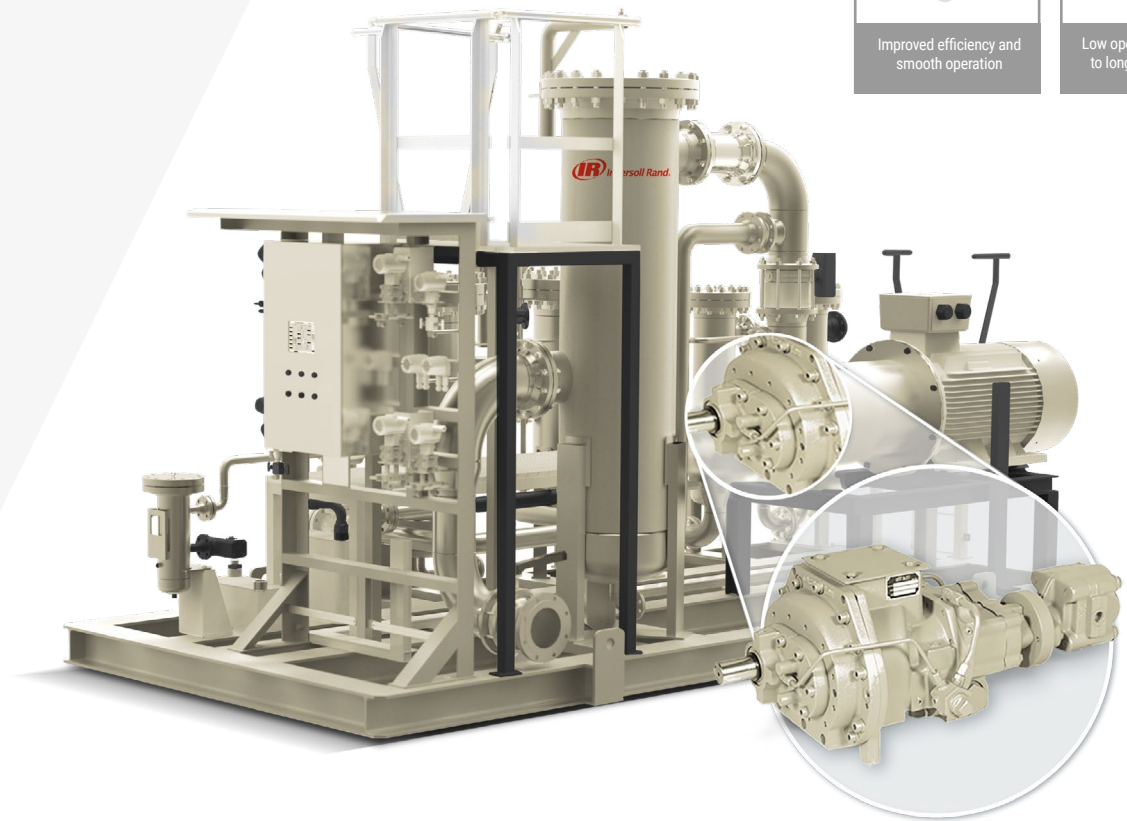
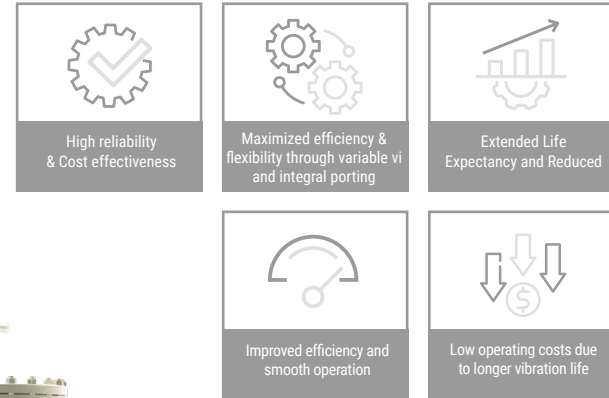
### 3.2.1 Screw Gas Compressor Packages

Ingersoll Rand's oil-injected rotary screw gas compressors are an ideal solution for those seeking additional options for specific project needs. We are able to serve a vast range of applications in the Oil & Gas, Industrial, Process and many other industries, including ones in corrosive gas environments. Vapor recovery, gas lift, well unloading, and BioGas are just a few suitable applications.

#### TECHNICAL DATA\*

• Flow rate:	235-5900 m <sup>3</sup> /hr
• Operating Pressure:	Up to 34 barg
• Power:	15-600 kW

\* This data can be modified based on customer needs



[Learn More](#)

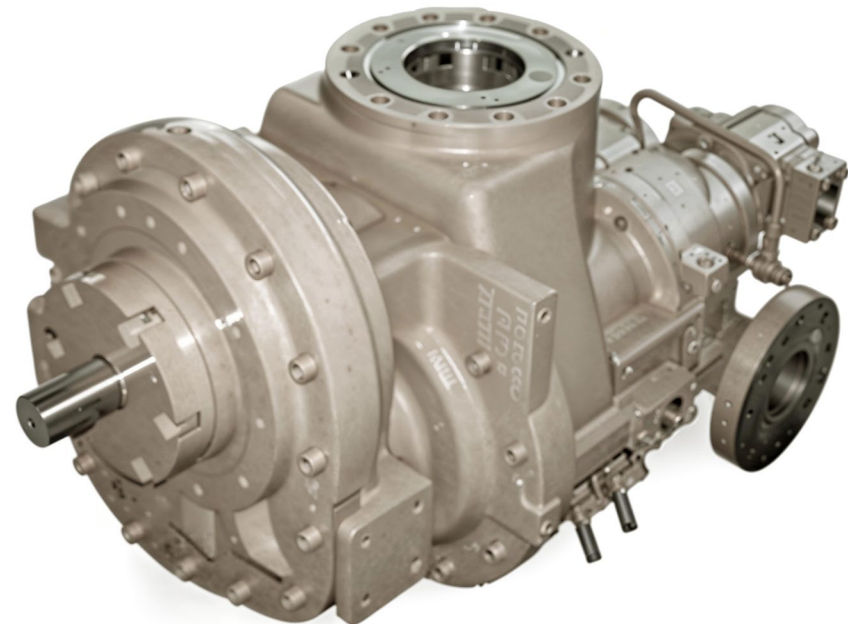
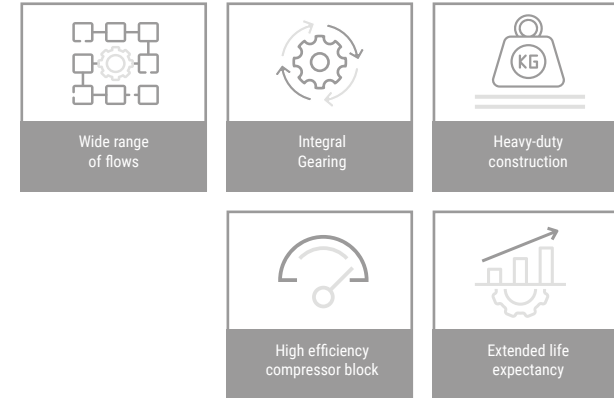
## 3.2 Gas Compressor Packages

### 3.2.2 Gas-end Compressor Blocks

Ingersoll Rand rotary screw natural gas compressors can be provided in one-stage and two-stage options. They are very cost-effective for handling high volumes of gas in field gathering, vapor recovery, and a wide range of other applications and delivering gas at high pressures.

SINGLE STAGE ROTARY SCREW GAS ENDS

TWO STAGE ROTARY SCREW GAS ENDS



[Learn More](#)



## 3.3 Air Dryer Packages

All units can be fully packaged, including the PLC based controller and can be supplied as per customer requirements. (this first sentence in bold). Ingersoll Rand provides standards designs or totally engineered for heavy-duty and severe ambient installations, extreme temperatures or explosive environment conditions.

Ingersoll Rand manufactures a wide range of adsorption and refrigerant air dryers suitable for any kind of application and specific needs.

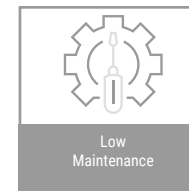
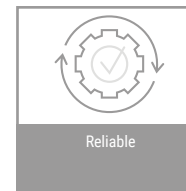
Our compressed air systems utilize the **latest technology to provide energy efficient solutions with low life cycle costs**. Air purity meets that meets international standards and can only be achieved with filtration, water separation and drying. The use of clean dry compressed air ensures high levels of reliability, and guarantees that quality standards are met and can reduce production costs.

### 3.3.1 Adsorption Air Dryers

Adsorption compressed air dryers are designed to remove moisture by passing air over a regenerative desiccant material, which attracts and retains water vapour molecules. The term pressure dew point refers to the temperature at which water condensation will occur, a typical pressure dew point specified for an adsorption dryer is  $-40^{\circ}\text{C}$  which prevents corrosion and inhibits the growth of microorganisms.

#### TECHNICAL DATA

• Flow rate (Nm <sup>3</sup> /hr):	As per requirement
• Dew point (PDP):	-20 / -70
• Power (kW)	Up to 200 (heated)



[Learn More](#)



# 3.3 Air Dryer Packages

## 3.3.2 Refrigerant Air Dryers

Ingersoll Rand designs and manufactures packages refrigeration systems with as alternative technical solutions to ensure no more vapor forms in compressed air. This is achieved thanks to the heat exchangers that are used to cool compressed air which will condense the bulk amount of water vapor within the air.


The pressure vessels design code can be manufactured and certified as per ASME/PED or other standards.

### Industry Application

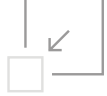
Ingersoll Rand refrigerant dryers deliver a comprehensive, cost-effective solution to multiple applications across a wide range of sectors including:

- Power Generation
- Oil & Gas
- Chemical & Petrochemical
- Water Treatment
- General manufacturing
- Mining
- Medical & Pharmaceutical
- Others


TECHNICAL DATA	
• Flow rate:	4,9 m³/hr - 5028 m³/hr
• Dew point (PDP):	0-3 def.C



Operate in Harsh Environments



Optimized Footprint



Robust Design



[Learn More](#) 



## 3.4 Nitrogen Generation Packages

Our custom-designed nitrogen generation packages are supplied with PLC based controllers. They are mainly used for blanketing and purging applications in a wide range of industries. Our experience covers installations at desert or arctic ambient conditions, as well as in classified areas.

### 3.4.1 PSA Systems

Ingersoll Rand nitrogen generators use Pressure Swing Adsorption (PSA) technology to separate nitrogen molecules from other molecules found in compressed air. Oxygen and other trace gases are removed, while nitrogen is allowed to pass through to the application.

Ingersoll Rand is able to provide nitrogen packages for any customer specific requirement. We can customize the PSA package to your needs.

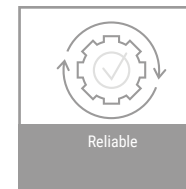
#### Industry Application

We offer a broad portfolio of reliable centrifugal products that will adapt to your application:

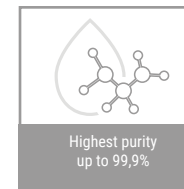
- Oil & Gas
- Chemical
- Water Treatment
- Electronics
- Food & Beverage
- Textile
- Aerospace

#### TECHNICAL DATA

• N <sub>2</sub> Flow Capacity (Nm <sup>3</sup> /hr):	Max. 400 (module)
• N <sub>2</sub> Purity:	99 - 99,99%



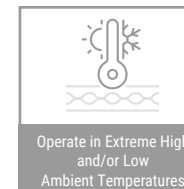
Reliable



Highest purity  
up to 99,9%



Lowest Energy  
Consumption



Operate in Extreme High  
and/or Low  
Ambient Temperatures



Learn More



# 3.4 Nitrogen Generation Packages

## 3.4.2 Membrane Systems

Ingersoll Rand can supply membrane nitrogen packages as per customer requirements.

Membrane Nitrogen Generation Systems consist of fibrous membrane modules arranged in a convenient housing equipped with a control system and integral filtration. High quality compressed air can be separated by means of membranes. Dried and cleaned compressed air (<+5°C pdp) that enters these fiber walls is filtered of water vapor, CO<sub>2</sub>, and oxygen.

Ingersoll Rand can advise the most effective membrane selection as per specific project conditions.

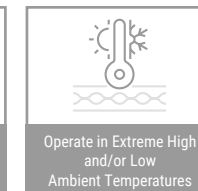
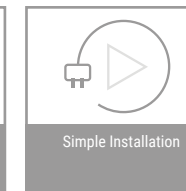
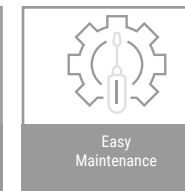
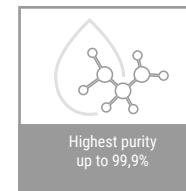
### Industry Application

Ingersoll Rand membrane nitrogen packages can be supplied in a wide range of industries including:

- Oil & Gas
- Power Generation
- Chemical & Petrochemical
- Mining
- Marine

### TECHNICAL DATA

• N <sub>2</sub> Flow Capacity (Nm <sup>3</sup> /hr):	Max. 1,000 (module)
• N <sub>2</sub> Purity:	99 - 99,99%



[Learn More](#)



# 04 Aftermarket & Service



## 04 Aftermarket & Service

Ingersoll Rand offers a **comprehensive line of maintenance packages and programs**. We provide a **range of service, replacement parts and support products** to help our customers increase their return on investment, maximize safety and performance, and provide total peace of mind.

We have a comprehensive global network of strategically located manufacturing facilities, sales offices, and authorized service centers. This allows us to **think globally and act locally**, providing service and support to our customers where and when they need it.

Ingersoll Rand takes customer service very seriously and we have developed our aftermarket capabilities year on year. Our customers rely on us day after day to keep their systems running **cost-effectively and at optimum performance**.

### INSTALLATION AND COMMISSIONING SERVICES



With Ingersoll Rand Installation and Commissioning you can ensure a technically sound start-up supervised by an Ingersoll Rand Service Technician. We ensure on-site performance meets design specifications, and will provide baseline performance readings that provide valuable information for ongoing maintenance.

- Pre-commissioning Activities
- Commissioning and Start-Up
- Site Training

### RECOMMENDED SPARE PARTS & LUBRICANTS BENEFITS



- Small investment
- Avoid unplanned maintenance repairs
- Eliminate lead time on critical consumable items



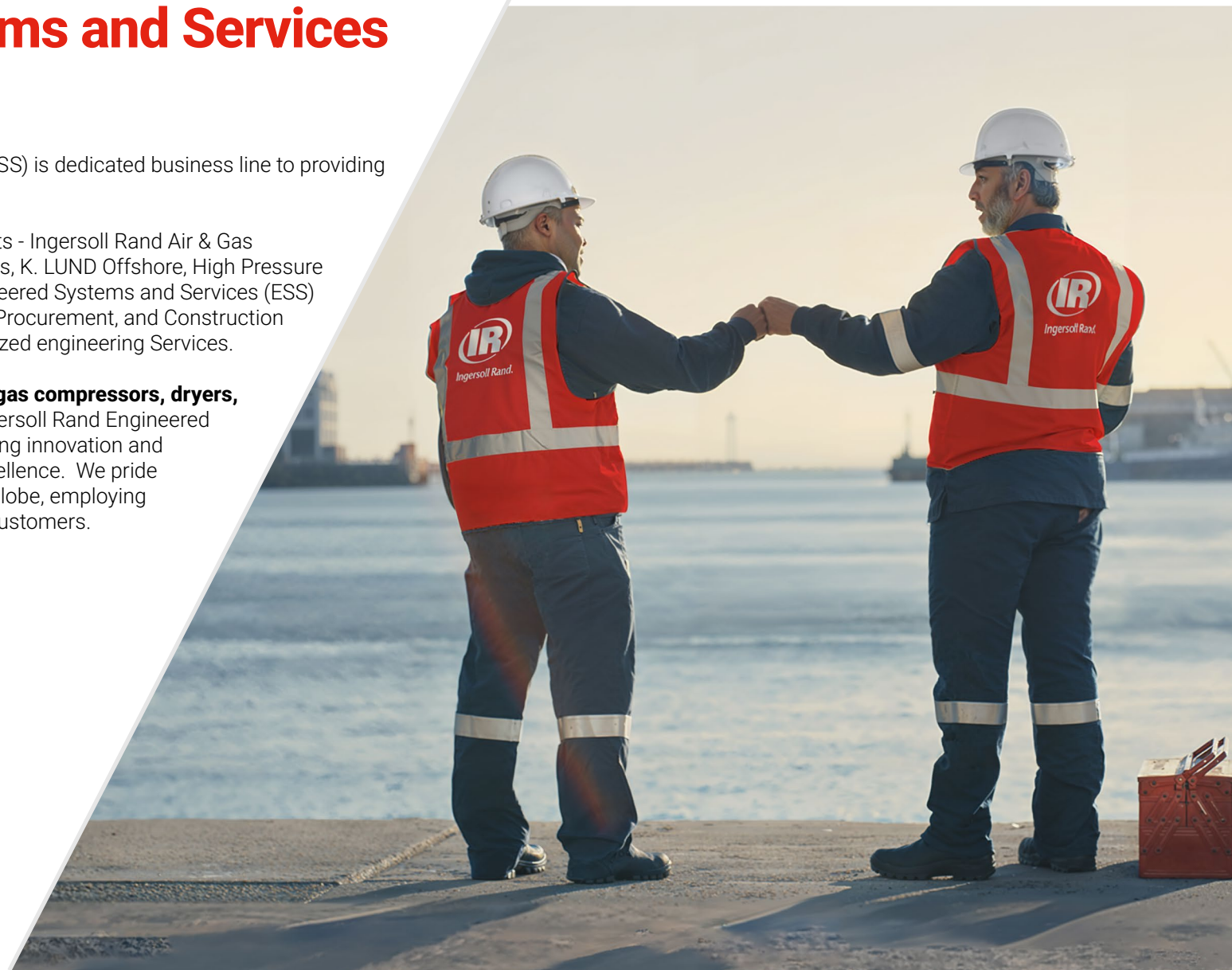
# 05 Engineered Systems and Services (ESS)

## 05 Engineered Systems and Services (ESS)

Ingersoll Rand's Engineered Systems and Services (ESS) is dedicated business line to providing market-leading, **custom-engineered solutions**.

Formed from a merger of five renowned business units - Ingersoll Rand Air & Gas Solutions, Ingersoll Rand Engineering Project Solutions, K. LUND Offshore, High Pressure Compressors and Blutek S.R.L. - Ingersoll Rand Engineered Systems and Services (ESS) leverages extensive experience to serve Engineering, Procurement, and Construction (EPCs) contractors and other firms in need of specialized engineering Services.

With a portfolio that includes state-of-the-art **air and gas compressors, dryers, nitrogen generators, and gas recovery Systems**, Ingersoll Rand Engineered Systems and Services (ESS) is committed to pioneering innovation and maintaining the highest standards of engineering excellence. We pride ourselves on managing intricate projects across the globe, employing cutting-edge technology to drive the success of our customers.





# 06 Contact details

# 06 Our Manufacturing Facilities

**Ingersoll Rand Spain**

Avenida de Alemania, 2  
28821 Coslada (Madrid),  
Spain  
Phone: +34 91 649 92 39

**Ingersoll Rand Italy**

SP Cassanese, 108  
20052 Vignate (Milan), Italy  
Phone: +39 02 950561

**Ingersoll Rand Technology Center**

3101 Broadway  
14227 Buffalo (NY)  
United States  
Phone: +1 716-896-6600

**Ingersoll Rand Germany**

Argenthaler Str. 11, 55469 Simmern  
(Hunsrück), Germany

**K. LUND Offshore**

Skvadronvegen 29  
4050 (Sola), Norway  
Phone: +47 51 64 81 50  
(Gujarat), India  
Phone: +91 79 4070 6200

**Blutek s.r.l.**

Via Maestri del Lavoro, 6,  
24020 Gorle BG, Italy

**Ingersoll Rand India**

21-30, GIDC Estate, opp. MDS Firms  
382330, Naroda, Ahmedabad (Gujarat),  
India  
Phone: +91 79 4070 6200

**Ingersoll Rand China**

4MXH+C98, Pangjin Rd  
215217, Wujiang (Suzhou, Jiangsu)  
China

