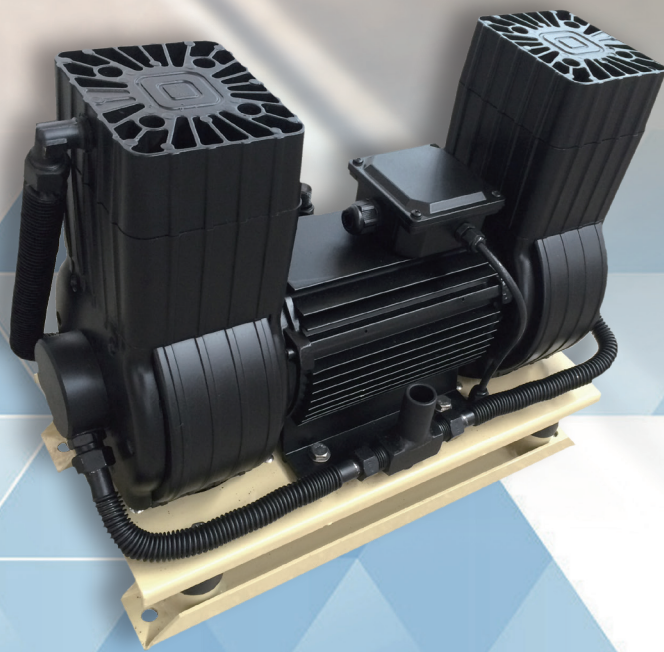


Piston Air Compressor for Electric Vehicles



More Than Air, Peace of Mind

Ingersoll Rand is well into its second century of building our legacy as a trusted global leader by delivering the innovative solutions and expertise our customers require. We continue to advance compressed air technology and service to maximize reliability, efficiency and productivity for our customers.

We not only provide world-class products and support, but the peace of mind that comes from our commitment to stand behind our customers in all aspects of what we do. That peace of mind allows our customers to focus on their primary objective: moving their businesses forward.



1905

Ingersoll Rand was formed by the merger of Ingersoll-Sergeant and Rand.



1906

Ingersoll Rand was listed on the New York Stock Exchange (NYSE).



1970

The first screw compressor was launched.



1987

Ingersoll-Rand (Shanghai) was founded, introducing the first screw air compressor into China.



1994

The first two-stage compression screw compressor was introduced.



2001

Nirvana, the first screw compressor with a variable speed inverter, was released.



2010

New R-series air compressors were unveiled.



2015

New second-generation R series were launched.



2021

Launch of RM Series with a Brand New Design in 2021

Piston air compressor for electric vehicles

Advantages:

Compact

The combination of the motor and cylinder delivers an integrated design and a much smaller size.

Light weight

The light compressor with an aluminum motor helps to reduce power consumption.

Low noise

An advanced design effectively reduces the noise level below 72 decibels, providing a quiet operation environment.

Super coating Ultra coating

The cylinder internal surface covered with Ultra coating, extended maintenance interval, high sealing performance and less wear, prolonging the service interval of compressor.

Non- oil emulsification

This lubricant-free compressor completely solves the common oil emulsification problems in the automotive industry, helping you save the cost of lubricating oil replacement and eliminating the potential danger of oil emulsification.

High adaptability

Excellent temperature adaptability and reliability; able to work at a temperature range from -40°C to +60°C.

Applications:

- Brake systems
- Air suspension systems and airbag inflation, providing power for automobile doors and wipers, etc.



High reliability



Low maintenance cost



Direct connection design



Oil-free emulsification



Shell color is subject to actual products.

Model B16XB3/10-Y

Electric vehicle features: Designed for public transport systems

With the rapid change of public transport systems and the development of the new energy vehicle industry, the conceptual design of air compressors needs to be integrated with advanced concepts including compactness, light weight, low noise, and easy installation.

The automotive air compressor developed and manufactured by Ingersoll Rand is a system specially designed to meet the strict requirements of the public transport sector. Featuring high reliability and convenient maintenance, the compressed air system will help you save much cost.

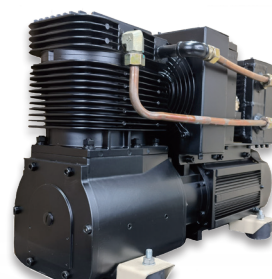
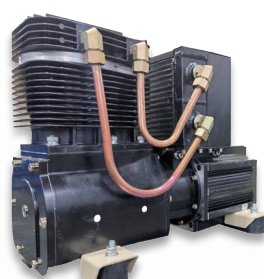
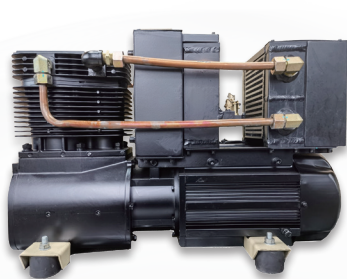


Table of Parameters

	B16XB3/ 10-Y	B16VXB3/ 10-Y	B16VXB4/ 10-Y	B16VXB3/ 12-Y	B16VXB4/ 12-Y	B16VXB3/ 12-MY	B16VXB4/ 12-MY	B16VXB5A/ 12-MY
Motor Type	Three-phase Asynchronous	Three-phase Asynchronous	Three-phase Asynchronous	Three-phase Asynchronous	Three-phase Asynchronous	Permanent Magnet Synchronous	Permanent Magnet Synchronous	Permanent Magnet Synchronous
Rated Voltage V	220/380	220/380	220/380	220/380	220/380	220/380	220/380	220/380
Rated Pressure Mpa	0.8	0.8	0.8	1.0	1.0	1.0	1.0	1.0
Max. Pressure Mpa	1.0	1.0	1.0	1.2	1.2	1.2	1.2	1.2
Rated Power kW	1.5	2.2	3.0	2.2	3.0	2.2	3.3	4.0
Drive Type	Direct Connection	Direct Connection	Direct Connection	Direct Connection	Direct Connection	Direct Connection	Direct Connection	Direct Connection
Rated Displacement m ³ /min	0.15	0.23	0.28	0.25	0.28	0.28	0.32	0.45
Net Weight kg	40	51	53	51	53	51	53	60
Dimensions (L*W*H mm)	452*377*360	557*374*370	557*374*370	557*374*370	557*374*370	557*374*370	557*374*370	661*338*437
Min. Space Reserved for Installation (L*W*H mm)	650*650*550	750*650*550	750*650*550	750*650*550	750*650*550	750*650*550	750*650*550	860*650*650
Exhaust Port Dimensions	Outer Screw M22*1.5, internal 24° tapered seal							

Ingersoll Rand drives your business with industrial wisdom

Ingersoll Rand provides advanced compressed air systems with longer service life to improve your efficiency and reduce your operating costs, putting you ahead of competitors. Each of our air compressors is innovatively designed with industry-leading performance, delivering excellent energy efficiency, reliability and exhaust. In addition, by leveraging unique advantages, we also provide a wide range of solutions including professional engineering and construction, comprehensive after-sales support and durable original spare parts.

Global Reach, Local Service



Tracking user's footprint: Quick and high-quality all-around services

Ingersoll Rand Industrial Technologies (China) experienced service team continually provides better solutions with professional, reliable and convenient services, improving efficiency and profitability and reducing system operation costs for customers.

We have a professional service team at each of our customer centers and liaison offices in China, providing fast system services for customers. Ingersoll Rand Call Center, the oldest of its kind in the compressor industry, serves you 24 hours a day, 365 days a year.

Ingersoll Rand holds a large amount of inventory at regional distribution centers in Tianjin, Shanghai and Guangzhou in addition to emergency spare parts at customer centers and liaison offices, building a nationwide network that ensures efficient system operation for customers. While providing technical service, Ingersoll Rand customer centers and liaison offices also offer services for non-Ingersoll Rand equipment based on customer needs, creating convenient, one-stop professional services for customers.

National service network

More than 30 Customer Centers and Liaison Offices

1 Overhaul Center and Spare Parts Operation Center



Global Reach, Local Service

No matter what the industry or location

Ingersoll Rand is committed to serving you 24 hours a day, seven days a week. Our worldwide network of distributors, engineers and certified factory-trained technicians are a phone call away - ready to support you with innovative and cost-effective service solutions that will keep you running at peak performance.





Ingersoll Rand Inc. (NYSE:IR), driven by an entrepreneurial spirit and ownership mindset, is dedicated to Making Life Better for our employees, customers, shareholders, and planet. Customers lean on us for exceptional performance and durability in mission-critical flow creation and industrial solutions. Supported by over 80+ respected brands, our products and services excel in very complex and harsh conditions. Our employees develop customers for life through their daily commitment to expertise, productivity, and efficiency. For more information, visit www.IRCO.com.



Contact Ingersoll Rand

Add.: F11, L'Avenue, 99 Xianxia Road, Shanghai
Tel.: 021-22216000
Website: www.IngersollRand.com

***24h National Toll-free
Service Hotline:***

**800 820 2128
400 820 2128**