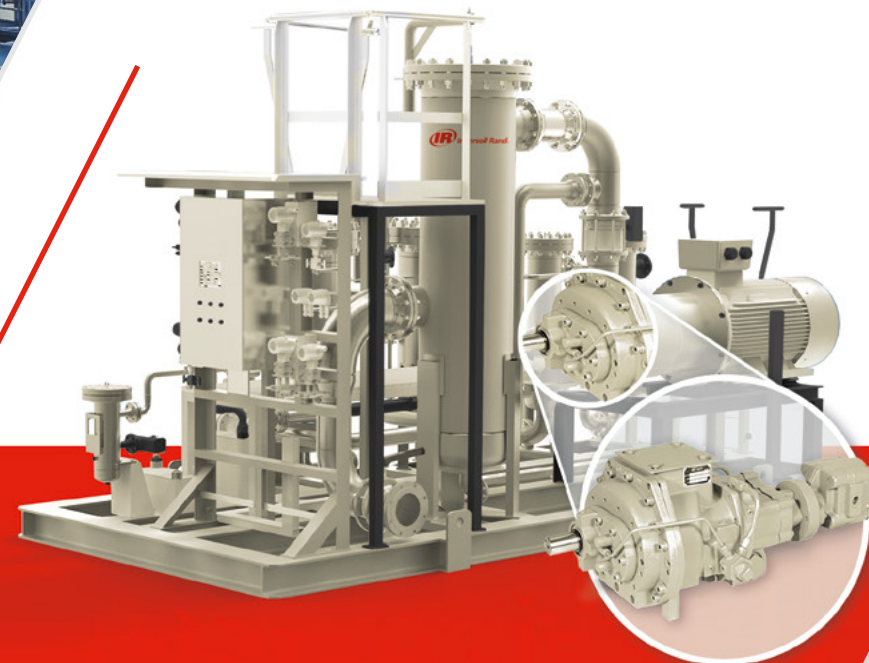




# SCREW GAS COMPRESSORS PACKAGES

**CHOOSE THE TRUSTWORTHY  
GAS COMPRESSOR SOLUTION  
& ENJOY PEACE OF MIND**



**REQUEST A QUOTE**

**Engineered Systems and Services**  
[www.ingersollrand.com/air-compressor-systems](http://www.ingersollrand.com/air-compressor-systems)

©2025 Ingersoll Rand. All Rights Reserved.  
All trademarks are the property of Ingersoll Rand.



# Contents

---

- 01.** INGERSOLL RAND INTRODUCTION
- 02.** BENEFITS OF INGERSOLL RAND ROTARY SCREW GAS COMPRESSORS
- 03.** APPLICATIONS
- 04.** PREMIUM COMPRESSOR BLOCKS
- 05.** ENGINEERED SCREW GAS COMPRESSOR PACKAGES
- 06.** TECHNICAL DATA
- 07.** ENGINEERED SYSTEMS AND SERVICES (ESS)
- 08.** OUR MANUFACTURING FACILITIES

# 01. Ingersoll Rand Introduction

At Ingersoll Rand's we have been managing and implementing engineered to-order air packages for complex technical requirements.

We provide **specialized custom compressed air and nitrogen generation packages to international EPC contractors and engineering companies** across a range of industries.

Using the extensive experience that we have gained by working with EPC companies, we have developed the capability to carry our complex projects that are tailored to our customers' requirements. Engineered for performance, our range of equipment is built to provide **maximum efficiency, reliability and uptime.**

We are a leading global business provider, offering custom-made products to satisfy a range of customer needs based on:



Market to Order (MTO)



Engineering to Order (ETO)



Special configuration and Project Lifecycle Support (PLS) for complex projects and EPC contractors.





## 02. Benefits of Ingersoll Rand Rotary Screw Gas Compressors

Ingersoll Rand Gas Compressors is one of the world's leading manufacturers of compressed gas systems.

For over 100 years, Ingersoll Rand has designed and manufactured rotary screw and reciprocating compressors constructed to meet a wide variety of demands. We have built a reputation as a manufacturer of choice and an industry leader.

Ingersoll Rand's oil-injected rotary screw gas compressors are an ideal solution for those seeking additional options for specific project needs. They provide a wide range of benefits:



# 03. Applications

For over a half a century, Ingersoll Rand has been providing solutions through our compression technologies for numerous market segments. With a wide variety of compressor products, we are able to serve a vast range of applications in the Oil & Gas, Industrial, Process and many others industries, including ones in corrosive gas environments. Vapor recovery, gas lift, well unloading, and bio gas are just a few suitable applications.

We pride ourselves on having flexible and quality engineered solutions to meet the demands of the specific technical requirements of your application.

## Markets & Applications where we have served:

Oil & Gas	Industrial & Process
Vapor Recovery (VRU)	Biogas Applications
Flare Gas Capture	Carbon Dioxide (CO2) Applications
Gas-Lift	Carbon Capture and Storage (CCS)
LNG Boil-Off Gas	Landfill Gas Recovery
	Fuel Gas Conditioning

Is your market not on the list? **We can provide engineered rotary screw gas compressors to your specific application.** Request a quote today – we'll will tailor our offer to your technical specifications!



## 04. Premium Compressor Blocks

Ingersoll Rand rotary screw natural gas ends can be provided in both one-stage and two-stage options. They are highly cost-effective for managing large volumes of gas in field gathering, vapor recovery, and a broad range of other applications while delivering gas at high pressures.

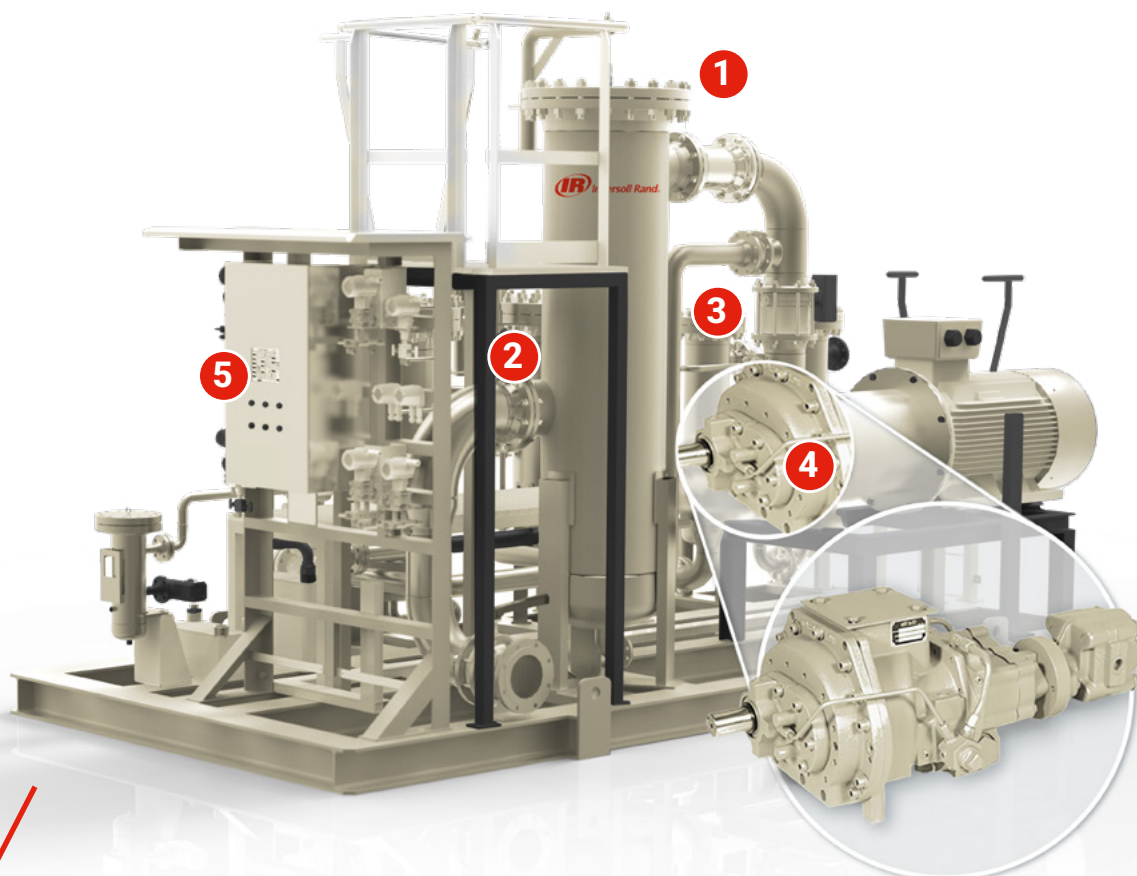
The Ingersoll Rand gas compressor blocks are available in 12 models. Exceeding the requirements of all international safety standards, they are characterized by low maintenance and high reliability. Smooth operation results from the absence of unbalanced forces and pressure pulsation.



[LEARN MORE](#)



# 05. Engineered Screw Gas Compressor Packages



## 1 INTAKE FILTER

Designed using in-depth flow simulation to achieve the maximum water separation



## 2 OIL SEPARATOR

Oil/gas separation obtained by the combination of mechanical removal and filtration with coalescent cartridge



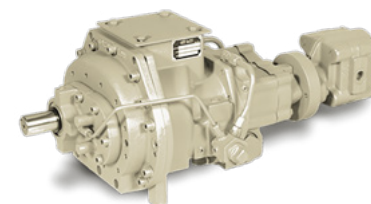
## 3 AFTER FILTER

Cartridge filter element with dedicated housing, designed by Ingersoll Rand to reach maximum efficiency and minimum pressure loss



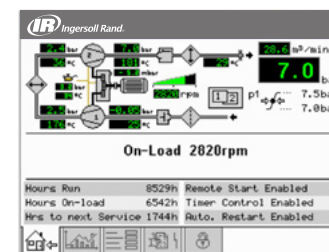
## 4 PREMIUM COMPRESSOR BLOCK

High efficiency compressor block, specifically designed for gas application



## 5 HMI PROCESS CONTROL

Dedicated software realized by Ingersoll for the system control and safety management

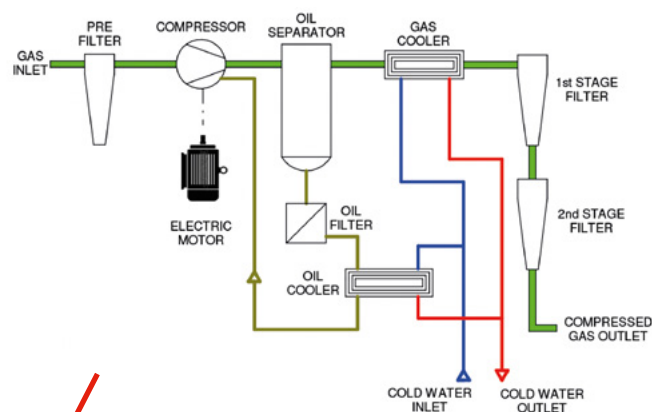


**LEARN MORE**

## 06. Technical data

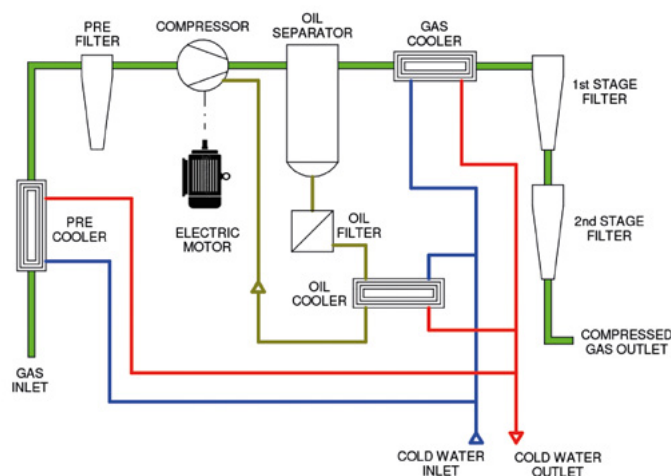
### CONFIGURATION N°1

Complete system with water cooling, suitable for gases with water content



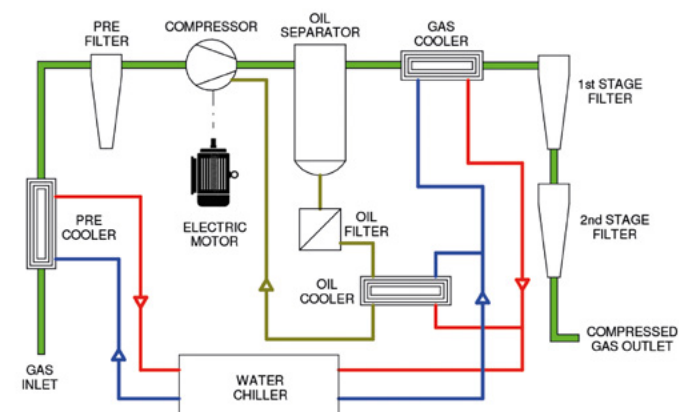
### CONFIGURATION N°2

Solution with the pre cooler for gases with high water content: the temperature decreases to separate water content by condensation



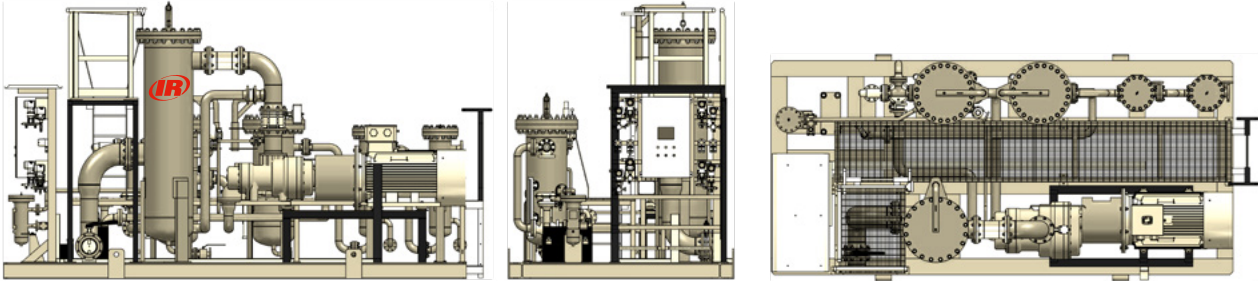
### CONFIGURATION N°3

Totally integrated solution having closed loop water cooling system, with chiller installed on the common skid





# 06. Technical data



Possible Technical Configuration:

Stages	Rotor Diameter mm	Max Discharge Press. Bar	Power kW	Flow range m³/h max
Single	70,6	14	15	235
Single	95,7	14	30	470
Single	120	14	50	700
Single	155	14	90	1150
Single	108	24	67	590
Single	127.5	24	90	1416
Single	175	24	135	2000
Single	204	24	225	2950
Single	245	21	250	3540
Single	309	17	450	6000
Single	309	10	600	9440
Double	175 & 127.5	34	300	3000
Double	245 & 175	34	450	4130
Double	245 & 175	10	260	4130
Double	309 & 245	10	450	5900

## Features and Options:

Ingersoll Rand rotary screw compressor packages are available in 1, 2 and 3 stage configurations, with both gas engine and motor drives up to 60hp. Numerous options are available, including but not limited to the following:

- PLC's, HMI's, Instrumentation
  - Motor controls - VFD's, Soft Starters
- Scrubbers, Blowdown tanks, Separators
  - Enclosures, O2 analyzers, after coolers, etc.

## 07. Engineered Systems and Services (ESS)

Ingersoll Rand's Engineered Systems and Services (ESS) is dedicated business line to providing market-leading, **custom-engineered solutions**.

Formed from a merger of five renowned business units - Ingersoll Rand Air & Gas Solutions, Ingersoll Rand Engineering Project Solutions, K. LUND Offshore, High Pressure Compressors and Blutek S.R.L. - Ingersoll Rand Engineered Systems and Services (ESS) leverages extensive experience to serve Engineering, Procurement, and Construction (EPCs) contractors and other firms in need of specialized engineering Services.

With a portfolio that includes state-of-the-art **air and gas compressors, dryers, nitrogen generators, and gas recovery Systems**, Ingersoll Rand Engineered Systems and Services (ESS) is committed to pioneering innovation and maintaining the highest standards of engineering excellence. We pride ourselves on managing intricate projects across the globe, employing cutting-edge technology to drive the success of our customers.



## 08. Our Manufacturing Facilities

### Ingersoll Rand Spain

Avenida de Alemania, 2  
28821 Coslada (Madrid),  
Spain  
Phone: +34 91 649 92 39

### Ingersoll Rand Technology Center

3101 Broadway  
14227 Buffalo (NY)  
United States  
Phone: +1 716-896-6600

### K. LUND Offshore

Skvadronvegen 29  
4050 (Sola), Norway  
Phone: +47 51 64 81 50  
(Gujarat), India  
Phone: +91 79 4070 6200

### Ingersoll Rand India

21-30, GIDC Estate, opp. MDS Firms  
382330, Naroda, Ahmedabad  
(Gujarat), India  
Phone: +91 79 4070 6200

### Ingersoll Rand Italy

SP Cassanese, 108  
20052 Vignate (Milan), Italy  
Phone: +39 02 950561

### Ingersoll Rand Germany

Argenthaler Str. 11, 55469 Simmern  
(Hunsrück), Germany

### Blutek s.r.l.

Via Maestri del Lavoro, 6,  
24020 Gorle BG, Italy

### Ingersoll Rand China

4MXH+C98, Pangjin Rd  
215217, Wujiang (Suzhou, Jiangsu)  
China

