



INGERSOLL RAND PUMPS

2024-2025 PRODUCT LINE BROCHURE



A wide range of products
All driven by one philosophy
All part of one family

Ingersoll Rand's robust product portfolio offers a wide range of pumps from large, heavy duty platforms, lubrication and circulation to precise metering and dosing. Leveraging more than 125 years of engineering and manufacturing excellence, Ingersoll Rand pumps are designed to meet the most demanding and complex needs of our customers.

Lubrication & Circulation

The functionality of Ingersoll Rand Lubrication and Circulation pumps with several porting and drive options makes these pumps and assemblies ideal for OEM applications. Designed to integrate directly into manufacturers' equipment, our line of customized solutions provides variety and flexibility.

L Series

- › Compact and flexible drive options
- › Flow rates to 13.7 USGPM (3 m³/hr)
- › Pressures to 500 PSI (34 bar)



C Series

- › Flexible mounting, sealing, and driving options
- › Flow rates to 84 USGPM (19 m³/hr)
- › Pressures to 250 PSI (17 bar)



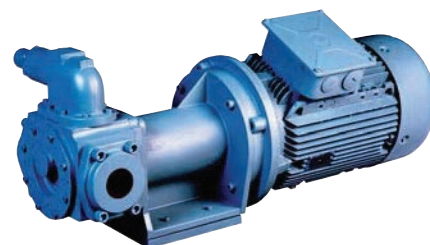
CC Series

- › Closed coupled design eliminates components
- › Smaller footprint
- › Mounts directly to NEMA and IEC motors
- › Flow Rates up to 32.5 GPM (7.38 m³/hr)
- › Pressure up to 100 PSI (7 bar)



1000 Series

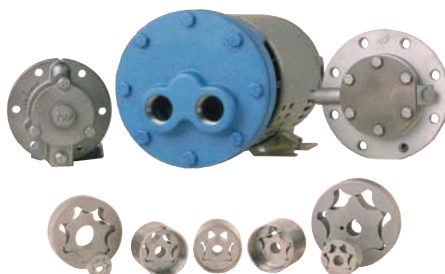
- › Internal gear pump design
- › Flow rates to 13.7 USGPM (3 m³/hr)
- › Pressures to 300 psi (20 bar)
- › Multiple porting options with side ports as standard
- › Cast Iron construction



Custom OEM Solutions

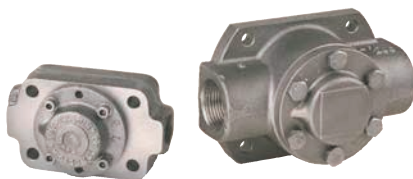
G and TR Pumps

- › Gerotor and torque ring pump design with multiple porting options
- › Flow rates to 20 GPM (3 m³/hr)
- › Pressures to 100 PSI (7 bar)



Cartridge Pumps

- › Several port and drive options
- › Flow rates to 6 GPM (1.4 m³/hr)
- › Pressures to 150 PSI (10 bar)



Stripped Pumps

- › Partial pump assemblies built directly into OEM equipment
- › Flow rates to 84 GPM (19 m³/hr)
- › Pressures to 150 PSI (10 bar)



General Purpose Markets and Applications

- › Compressors
- › Engines
- › Filtration
- › Transmissions
- › Fuel Oil
- › Bulk Transfer
- › Gearboxes

Industrial Duty

GlobalGear® Series

Ingersoll Rand provides pump units from our GlobalGear family for applications requiring either higher flow or heavy duty service designs. Customized designs are available that include close coupled mounting, and hydraulic motor drives. High suction pressure, high fluid temperature, and cold start designs are available for specific application challenges. Pump construction materials include cast iron, cast steel, and stainless steel. Typical applications include lube oil pump-motor assemblies for compressor and rotating equipment skids, pump units for hot oil systems and hot asphalt packages.

- › Back pull-out design provides ease of maintenance
- › Flow rates to 1200 GPM (249.8 m³/hr)
- › Pressures to 200 psi (14 bar)
- › Viscosities to 1,000,000 SSU (220,000 cst)

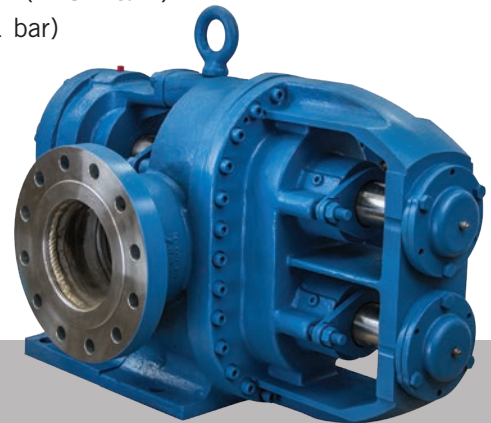


HD Series

Ingersoll Rand offers HD product for the most demanding applications. The HD series is capable of handling multiple pumping challenges that may include large viscosity and temperature ranges and the presence of solids in a single application. HD pumps can offer system builders and OEM's an attractive alternative to progressive cavity pumps and air-operated diaphragm pumps. HD pumps will tolerate intermittent run dry, are relatively compact, and will pump liquids with viscosities that range from thin to very thick. They will handle temperatures up to 525°F and are energy efficient. Standard pump construction is in Ductile Iron or 316 Stainless Steel.

OEM applications for HD pumps include:

- › Waste water systems builders
- › Fryer oil recovery systems
- › Black liquor soap
- › Paper coating packages
- › Waste fuel handling systems
- › Starch handling systems
- › Capable of running dry
- › Flow rates to 650 USGPH (148 m³/hr)
- › Pressures to 450 psi (31 bar)
- › Viscosities to 20,000,000 ssu (4,400,000 cst)



Industrial Process Markets and Applications

- › Chemical Processing
- › Petroleum Products
- › Asphalt
- › Food & Beverage Processing
- › Inks, Paints and Pigments
- › Pulp and Paper
- › Bulk Transfer

Magnetically Coupled

Chemical and Corrosion Resistant

Ingersoll Rand magnetically coupled pumps are designed to provide exceptional reliability. Non-pulsing flow is combined with magnetically coupled, leak-free, seal-less technology resulting in longer life. These tough and durable external gear pumps are constructed with 316 Stainless Steel, Hastelloy, or Titanium.

T Series

- › External gear design
- › Flow rates from 20 to 650 USGPH (19 to 2460 LPH)
- › Differential pressures to 250 psi (17 bar)
- › Temperatures to 350°F (176°C)
- › Viscosity: 0.3 cps to over 10,000 cps
- › ATEX approved



D Series

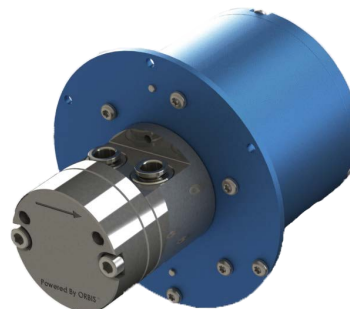
- › External gear design
- › Flow rates from .015 to 121 USGPH (.06 to 458 LPH)
- › Differential pressures to 250 psi (17 bar)
- › Temperatures to 350°F (176°C)
- › Viscosity: 0.3 cps to over 10,000 cps
- › ATEX approved



D Series with ORBIS™ Technology

ORBIS Technology enhanced drive solution with a brushless DC motor and integrated controls delivers precise flow in a compact footprint. The external gear design of D Series pumps provides a non-pulsing flow while the magnetically coupled construction provides a seal-less, leak-free pump. This combination provides long life, reliability and flexibility for various applications.

- › Flow Range up to 42 GPH (up to 160 LPH)
- › Differential Pressure to 80 PSI (5 bar)
- › System Pressure to 300 PSI (20 bar)
- › Viscosity 0.3 CPS to 2,000 CPS
- › Temperature - 125 °F Continuous Duty
- › CE compliant



Magnetically Coupled Markets and Applications

- | | | |
|------------------------|------------------------------|-----------------------------|
| › Medical Equipment | › Chemical Metering | › Polyurethane Foam Systems |
| › Laser Cooling | › Liquid Chromatography | › Water Treatment |
| › Water Purification | › Industrial Inkjet Printers | › Chemical Systems |
| › Laboratory Equipment | › Food Processing Equipment | |

»» VISIT US AT

WWW.INGERSOLLRAND.COM/PUMPS

OUR SITE INCLUDES:

- › Performance Curves
- › Service Manuals
- › Sample Guide Specifications
- › Engineering Data Packs with Dimensions and Design Information
- › Pump Guru Pump Selection Software
 - Select, Size, and Quote The Right Pump to Meet Your Application Needs

»» LOCATIONS

INGERSOLL RAND

12500 South Pulaski Road
Alsip, Illinois 60803 USA
phone: 708-389-2500

Birkdale Close
Manners Industrial Estate
Ilkeston, Derbyshire DE7 8YA UK
phone: 44.0.115.932.5226

