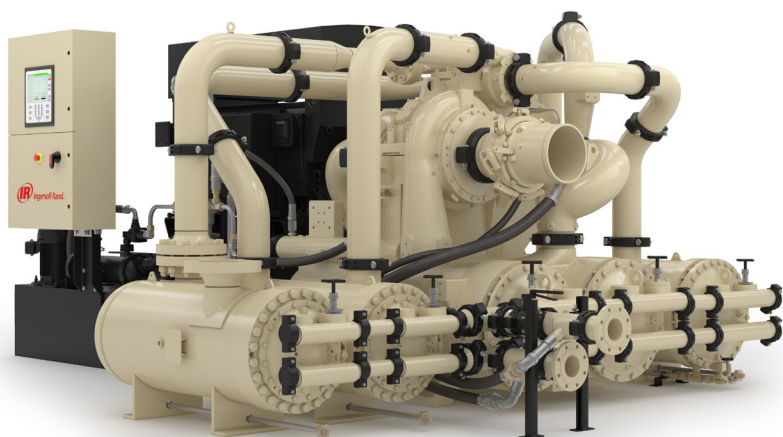


High Pressure Reciprocating and Centrifugal Compressors

65-8,000 cfm, 20-2,350 hp



Your Trusted Full-Service Partner

You can count on Ingersoll Rand for high pressure compressed air technologies and comprehensive services that make you successful. Our collaborative total system solutions maximize efficiency and performance.

Customized Solutions for Your Operation

Ingersoll Rand offers customizable compressor options for PET bottle blowing and other high pressure applications. Choose between our best-in-class reciprocating or centrifugal systems that streamline maintenance requirements and provide exceptional reliability.



Air Purity You Can Trust

Ingersoll Rand designs and manufactures a range of high performance, oil-free air compressors that meet ISO 8573-1:2010 Class 0 air quality standards under all operating conditions.

Reduce Unplanned Downtime

Our PackageCARE™ and PlannedCARE™ maintenance plans provide total protection by including all scheduled maintenance and predictive analytics that help to prevent production interruptions. This includes Ingersoll Rand IoT Solutions that provide 24/7 control of energy use and maintenance, giving you the ability to manage your air system from anywhere in the world.



Choose the Right Maintenance Program for You

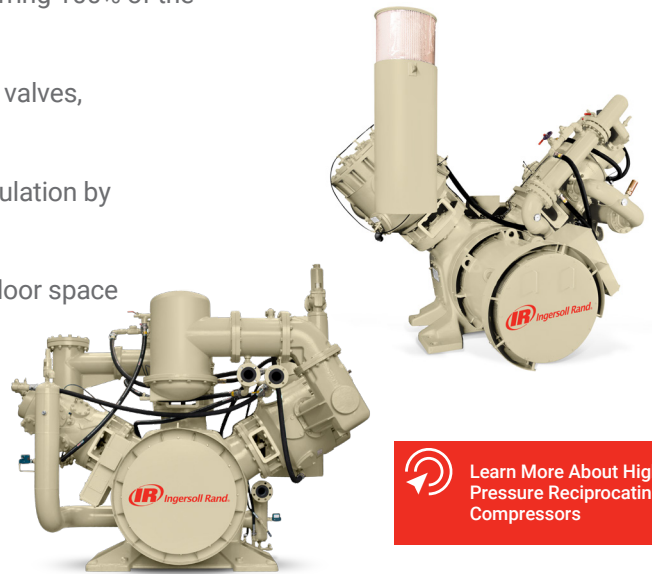


Discover the Perfect Fit for Your Operation

VH- and WH-Series Reciprocating Compressors

VH and WH high pressure reciprocating air compressors offer a robust design in an ultra-efficient package to optimize your total cost of ownership and meet the demands of your critical processes.

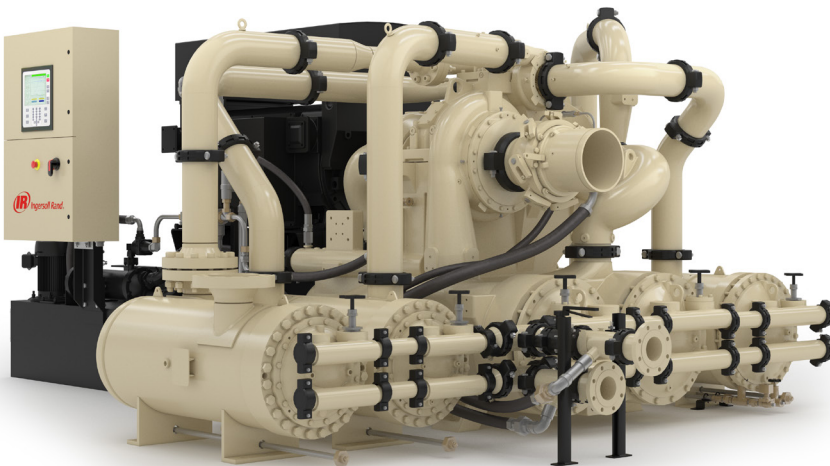
- Reliable direct-drive, shaftless motor streamlines maintenance requirements, reduces downtime and minimizes energy losses by transferring 100% of the motor's output to running gears
- Simplified 3-stages of compression reduces the number of valves, rings and consumables needed
- 3-step capacity control provides the most efficient flow regulation by accommodating varying process demands
- Compact footprint and balanced design frees up valuable floor space and eliminates the need for a special foundation
- Durable construction, including precision parts and high-quality components, such as long-lasting composite rings



 Learn More About High Pressure Reciprocating Compressors

MSG TURBO-AIR NX Centrifugal Compressors

Ingersoll Rand MSG® TURBO-AIR® NX 2500 M4/M5 and NX 5000 M4/M5 centrifugal compressors provide class-leading efficiency and lower overall total cost of ownership.



- Long operating life that is measured in decades
- Simple design, easy maintenance
- Intuitive MAESTRO™ control systems
- Optimized for your high pressure application needs

 Learn More About High Pressure Centrifugal Compressors



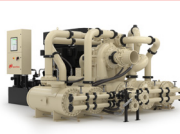


Large Reciprocating Boosters

Ingersoll Rand PHE and ESV reciprocating boosters are designed to boost low pressure air or nitrogen up to 1,400 psig when coupled with a rotary screw or centrifugal compressor. PHE and ESV boosters are highly engineered and customizable to fit your exact site conditions, offering a nearly limitless array of configurations for your application. Select from a range of options including lubricated or non-lubricated, single-stage or two-stage, and air-cooled or water-cooled. The rugged frame is designed for long life and optimized for performing under high operating pressures.



[Learn More About Large Reciprocating Boosters](#)

High Pressure Air Optimized for Your Application

Product	VH-Series	WH-Series	MSG TURBO-AIR NX 2500 M4/M5	MSG TURBO-AIR NX 5000 M4/M5	Custom Reciprocating Boosters
					
Compressor Technology	Reciprocating	Reciprocating	Centrifugal	Centrifugal	Reciprocating*
Flow Rate, cfm (m³/hr)	250-800 (400-1,400)	800-1,850 (1,350-3,150)	1,000-4,000 (1,700-6,800)	1,500-8,000 (2,500-13,500)	65 - 2,900 (110 - 4,900)
Nominal Power, hp (kW)	125-350 (90-260)	310-740 (230-550)	500-1,250 (375-950)	1,000-2,350 (750-1,750)	20-400 (15-300)
Discharge Pressure, psig (barg)	290-650 (20-45)	290-650 (20-45)	Up to 600 (41)	Up to 600 (41)	250-1,400 (17-100)
100% Oil-free Air	Yes	Yes	Yes	Yes	Yes
Cooling	Water-cooled	Water-cooled	Water-cooled	Water-cooled	Air-cooled or Water-cooled

* Boosters are paired with rotary screw or centrifugal compressors (sold separately).

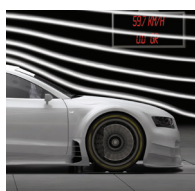
Reliability and Efficiency for Your Industry



Bottle Blowing



Autoclaves



Wind Tunnels



Propulsion Testing



Steel Production



Tire Manufacturing

Large Cycling Refrigerated Dryers

Ingersoll Rand large capacity refrigerated dryers deliver outstanding value by providing high-quality compressed air, reliably and efficiently. The innovative design of our large cycling dryers maximize energy savings in systems with fluctuating demand, reduce carbon footprint and save floor space.



Learn More About
Air Dryers

- Maximum reliability with stainless steel inlet piping, condensate drain monitoring and a constant 38°F dew point
- Lower energy costs with a true thermal mass cycling dryer design, paired with electronic no loss drains
- Increased sustainability via advanced refrigeration circuitry requiring over 45% less charge
- Up to 47% lower Global Warming Potential (GWP) by using R410A refrigerant to replace R404A
- Space-saving design reduces footprint, simplifies installation and frees up valuable floor space in your manufacturing operation
- Ease of installation for both air-cooled and water-cooled configurations with single point power connections

Parts and Accessories

A compressed air system is a significant investment. You expect reliable, clean, dry air at the lowest possible operating cost. Choose our genuine parts and accessories to ensure that your compressor is running efficiently and productively.



Learn More About
Genuine OEM Parts
and Accessories



Reliable Compressor
Accessories



Comprehensive
Installation Solutions



Genuine OEM
Replacement Parts



Ingersoll Rand Inc. (NYSE:IR), driven by an entrepreneurial spirit and ownership mindset, is dedicated to helping make life better for our employees, customers and communities. Customers lean on us for our technology-driven excellence in mission-critical flow creation and industrial solutions across 40+ respected brands where our products and services excel in the most complex and harsh conditions. Our employees develop customers for life through their daily commitment to expertise, productivity and efficiency. For more information, visit www.IRCO.com.

Ingersoll Rand, IR, the IR logo, MSG, PackageCARE and TURBO-AIR are trademarks of Ingersoll Rand, its subsidiaries and/or affiliates. All other trademarks are the property of their respective owners. Ingersoll Rand compressors are not designed, intended or approved for breathing air applications. Ingersoll Rand does not approve specialized equipment for breathing air applications and assumes no responsibility or liability for compressors used for breathing air service. Nothing contained on these pages is intended to extend any warranty or representation, expressed or implied, regarding the product described herein. Any such warranties or other terms and conditions of sale of products shall be in accordance with Ingersoll Rand's standard terms and conditions of sale for such products, which are available upon request. Product improvement is a continuing goal at Ingersoll Rand. Any designs, diagrams, pictures, photographs and specifications contained within this document are for representative purposes only and may include optional scope and/or functionality and are subject to change without notice or obligation.



Member of Pneurop

