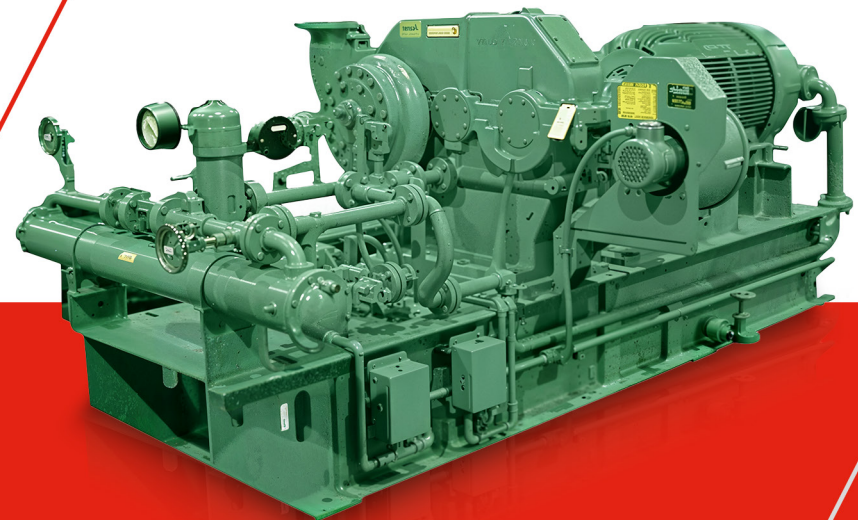




## PROTECT YOUR INVESTMENT & SAVE MONEY WITH **LOWER MAINTENANCE COSTS**

OUR SKILLED ENGINEERS ARE DEDICATED TO ENSURING SEAMLESS OPERATION OF YOUR MSG® CENTRIFUGAL COMPRESSOR PACKAGE. ENJOY TOTAL PEACE OF MIND FOR YOUR PROJECT THROUGH INGERSOLL RAND'S AFTERMARKET SOLUTIONS.



**REQUEST A QUOTE**

Engineered Systems and Services  
[www.ingersollrand.com](http://www.ingersollrand.com)

©2024 Ingersoll Rand. All Rights Reserved.  
All trademarks are the property of Ingersoll Rand.



# INDEX

WE HELP YOU TO IMPLEMENT SUCCESSFUL PROJECTS WITH PEACE OF MIND.  
BROWSE THE BROCHURE & DISCOVER THE FULL RANGE OF INGERSOLL RAND AFTERMARKET SERVICES!

ENGINEERED AIR & GAS MSG® CENTRIFUGAL COMPRESSORS	3
EUROPEAN CENTRIFUGAL REMANUFACTURING & TECHNOLOGY CENTER	4 - 5
AFTERMARKET SERVICES BENEFITS	6
MSG® COMPRESSOR MAINTENANCE PLANS	7
FIELD SERVICE	8
ENHANCING & EFFICIENCY UPGRADES	9
PREVENTIVE MAINTENANCE PLANS	10
GENUINE SPARE PARTS & LUBRICANTS	11 - 12
MAESTRO CENTRIFUGAL COMPRESSOR CONTROL SYSTEM	13
IIOT REAL-TIME REMOTE MONITORING	14
ECOPLANT	15
GLOBAL PRESENCE	16



# MSG® Centrifugal Compressors

## YOUR ENGINEERED-TO-ORDER CENTRIFUGAL COMPRESSOR PARTNER

Ingersoll Rand has extensive experience in providing engineered-to-order air & gas centrifugal compressor packages for global engineering companies, EPC contractors and end-users Worldwide **for over 70 years.**

Thanks to this consolidated experience, Ingersoll Rand is capable of **understanding client specific needs and requirements, allowing us to be with you through every step of your project. We can quickly design the most effective customized solution, giving you total peace of mind.**

With our main manufacturing facilities in Buffalo (US), Vignate (Italy) and Wujiang (China), sales and service locations worldwide, Ingersoll Rand is a global company with a commitment to meeting your needs with exceptional centrifugal compressor technology while exceeding your expectations with unequalled service & support.





# European Centrifugal Remanufacturing & Technology Center

**A FULLY DEDICATED EXPERT ENGINEERS TEAM DEVOTED TO REPAIR AND OVERHAUL SERVICES**

In Europe, we have a centrifugal remanufacturing and technology center located in Vignate, Italy. Here, we have established a comprehensive set of policies and procedures that provide a disciplined approach to the servicing of both compressors and components. This ensures a thorough quality inspection and establishes a clear scope of work.



**REQUEST A QUOTE**

Engineered Systems and Services  
[www.ingersollrand.com](http://www.ingersollrand.com)

©2024 Ingersoll Rand. All Rights Reserved.  
All trademarks are the property of Ingersoll Rand.



# European Centrifugal Remanufacturing & Technology Center

## OUR REMANUFACTURING & TECHNOLOGY CENTER CAN HELP YOU

- **Knowledge and Expertise**

Over 70 years of experience manufacturing and servicing centrifugal compressors

- **Proprietary Technology**

Access to original design specifications with strict adherence to proper equipment tolerances

- **Complete Service History**

Meticulous maintenance of service record history to ensure accuracy

- **In-house Rework**

Servicing is performed at an OEM facility with proper equipment and experienced technicians

- **Inspection Summary**

Each service proposal is provided with a comprehensive breakdown of the required scope

- **Genuine Spare Parts Replacement**

Service centers contain extensive inventories of OEM replacement parts

- **Experienced Workforce**

Dedicated teams of engineers and technicians devoted to repair and overhaul services

- **Complete Gearbox overhaul**

Full mechanical and aerodynamic testing capabilities to prove compressor performance

- **Globally Located**

We have strategically placed Remanufacturing & Technology Centers in Vignate (Italy), Buffalo (US), and Wujiang (China).



# Aftermarket Services Benefits

## CUSTOM MAINTENANCE PLANS WITH MULTIPLE BENEFITS

You have many distinct advantages when you partner with Ingersoll Rand for your centrifugal compressor needs. The cutting-edge solutions we deliver for air, industrial and process gas requirements are made possible by the **unique blend of product quality, engineering talent and dedicated teamwork brought to every unique customer needs.**

### WHAT YOU CAN GET



**Highest  
Performance**



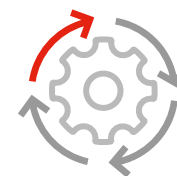
**Maximum  
Efficiency**



**Lower  
Maintenance**



**Lower Cost  
of Ownership**



**Maximized  
Uptime**



**Longer Life  
Expectancy**



**Predictive  
Diagnostics**



**Genuine Parts at  
Preferred Pricing**



**Trained  
Technicians**



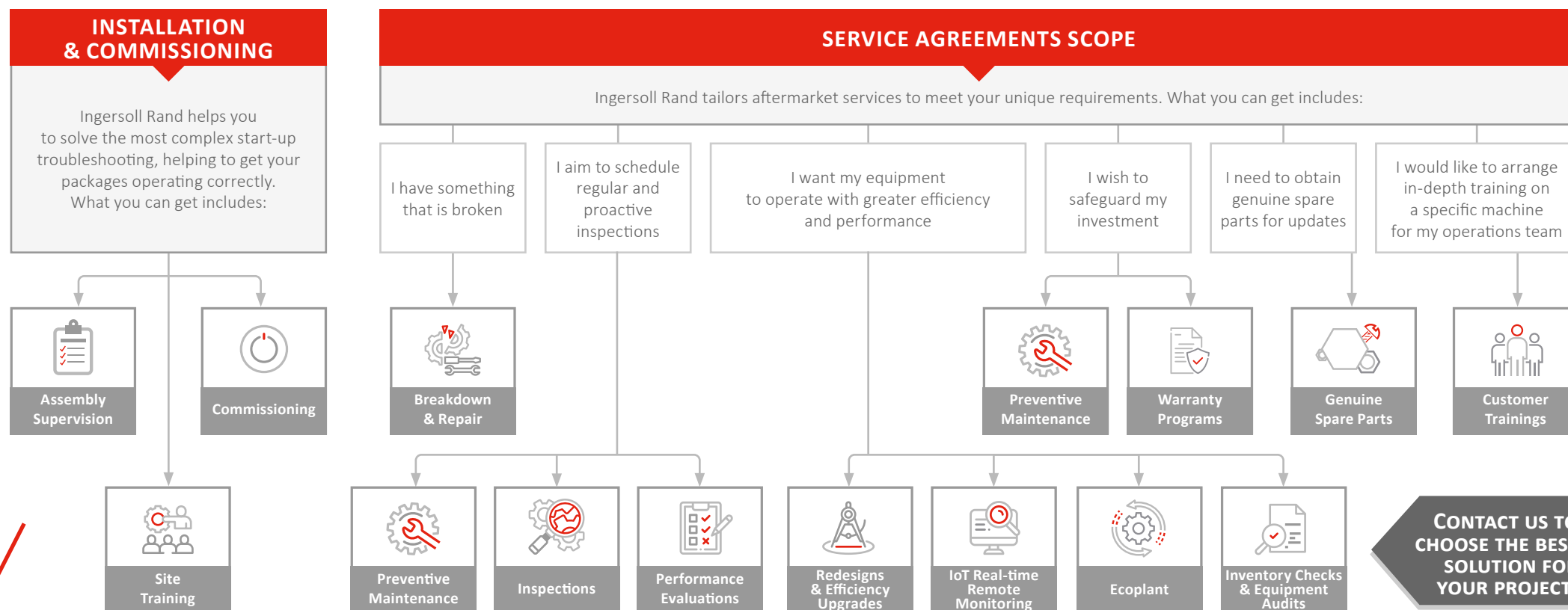
**Global  
Presence**

# MSG® Compressor Maintenance Plans



## RUN SMARTER WITH A BETTER PLAN!

The Ingersoll Rand **PlannedCARE diagnostic and maintenance service program** gives you a more cost-effective plan for scheduling and executing all required compressed air equipment services over the course of a year.





# Field Service

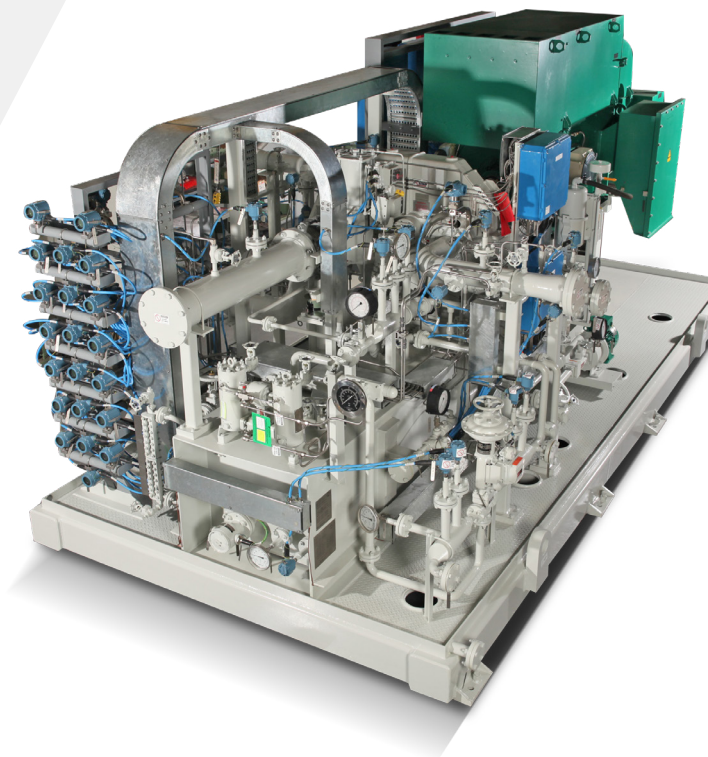
Our field service technicians are **trained experts specializing in the technical coordination of on-site compressor installations, repairs, overhauls, upgrades and start-up commissioning.**

**Ingersoll Rand has clearly defined processes and procedures for all required site service work.**

Each field service technician is required to document control panel settings and corrective actions associated with the site work in accordance with these procedures.

**Our team will provide:**

- Installation
- Startups
- Vibration Analysis
- Turnaround Inspections
- Field Balancing
- Drive Motor Alignment
- Control System Services
- Performance Evaluation
- Preventative Maintenance
- Diagnostic Checks
- Additional Services as Required



## OUR REMANUFACTURING & TECHNOLOGY CENTER CAN HELP YOU



Quick turnaround time  
for repair



Restore factory  
performance & reliability



Incorporate safety &  
performance upgrades



Highest  
Performance levels



Enhanced  
efficiency



Cost savings avoiding new  
purchasings



More  
Safety



# Enhancing & Efficiency Upgrades

Whether your compression requirements have changed, or you are looking for increased efficiency, **Ingersoll Rand** offers a variety of performance-enhancing solutions that can improve operating efficiency.

**Our team will provide:**

- **Aerodynamic Enhancements:** Ingersoll Rand offers a variety of aerodynamic modifications to adjust your existing performance to meet current compressed air demands with optimal operating efficiency.
- **Additional Upgrades**
  - Duplex Oil Filters
  - Duplex Oil Coolers
  - Control Valves
  - Cooler Bundles with Alternative Materials
  - Condensate Traps
- **Inlet Guide Vanes:** Our innovative inlet guide vanes (IGV) replace conventional inlet butterfly valves (IBV) with substantial potential for energy savings (up to 9%).



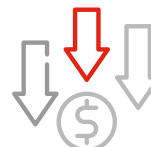
## GET THE BENEFITS OF REDESIGN & EFFICIENCY UPGRADES, INCLUDING



Productivity boost



Enhanced efficiency



Cost savings



More safety



REQUEST A QUOTE

Engineered Systems and Services  
[www.ingersollrand.com](http://www.ingersollrand.com)

©2024 Ingersoll Rand. All Rights Reserved.  
All trademarks are the property of Ingersoll Rand.



# Preventive Maintenance Plans

Backed by certified service professionals, Ingersoll Rand can help you implement a regular service routine that includes a **full inspection using diagnostic tools to help identify ways to improve efficiency and reliability, while reducing downtime.**

## What Services Need to Be Performed?

- Equipment and General System Inspection
- System Diagnostics
- Equipment Assessment
- Maintenance Service Programs
- Consumables Replacement



## GET THE BENEFITS OF REGULAR MAINTENANCE



Increases air compressor  
Lifespan and efficiency



Helps to avoid unscheduled downtime



Prevents emergency repairs



Maximizes the return on investment (ROI)  
of the installation

# Genuine Spare Parts & Lubricants

## PROTECT YOUR INVESTMENT

The genuine Ingersoll Rand replacement components are essential to meet the rigorous manufacturing standards **that ensure the continuous operation and safety of your machinery, while also preserving the validity of your warranty.**



## GET ALL OF THE BENEFITS OF GENUINE SPARE PARTS



Extended warranty coverage



Reduce lead time and cost



Lower total cost of ownership



Safety and risk management



Quality products



Trained experts



Engineering standards with revision control

## TURBOBLEND™ 46 PREMIUM CENTRIFUGAL COMPRESSOR LUBRICANT

The genuine Ingersoll Rand replacement components are essential to meet the rigorous manufacturing standards **that ensure the continuous operation and safety of your machinery, while also preserving the validity of your warranty.**





# Genuine Spare Parts & Lubricants

ENHANCE YOUR INVESTMENT



## TYPICAL SPARE PARTS NEEDS FOR A CENTRIFUGAL COMPRESSOR

RECOMMENDED SPARES (AS PER IOM)		
<ul style="list-style-type: none"><li>• Bearings (bull gear and pinions)</li><li>• Air and oil seals</li><li>• O-ring and shims per stage (gear box kit)</li><li>• Heat exchangers gasket kit</li><li>• Oil cooler gasket kit</li></ul>	<ul style="list-style-type: none"><li>• Victaulic gasket couplings</li><li>• Oil pumps couplings</li><li>• Oil pumps repair kits</li><li>• Coupling hardware kit</li><li>• Repair kit of control valves</li></ul>	<ul style="list-style-type: none"><li>• One instrument per type (temperature/pressure/vibration)</li><li>• Oil pump or oil pump motor</li><li>• Check valve (process)</li><li>• Coupling hubs and spacer</li></ul>
CAPITAL/INSURANCE SPARES		
<ul style="list-style-type: none"><li>• Bullgear</li><li>• Rotors</li></ul>	<ul style="list-style-type: none"><li>• Complete gearbox as alternative</li></ul>	<ul style="list-style-type: none"><li>• Heat exchanger bundles</li></ul>
CONSUMABLES/LUBRICANT OIL		
<ul style="list-style-type: none"><li>• All air/oil filters (including demister filter)</li></ul>	<ul style="list-style-type: none"><li>• Grease</li></ul>	<ul style="list-style-type: none"><li>• TURBOBLEND™ 46</li></ul>

Ingersoll Rand reminds the importance to properly store your spare parts: indoor climate-controlled environment and regular inspections

# Maestro Centrifugal Compressor Control System

## OPTIMIZE COMPRESSOR PERFORMANCE AND LOWER YOUR COSTS

MAESTRO control system is designed to **enhance visualization and optimization of performance, minimizing waste and cutting energy costs to deliver significant savings.**

The system information allowing you to **continually optimize your compressed air and gas performance.**



### FEATURES

- Remote monitoring and control with built-in web server
- Event history and diagnostics
- Complete integration of plc (programmable logic controller)
- Compatible with all makes and models of centrifugal compressors
- Quick set-up, easy configuration
- Over 30 languages
- Cooling water control
- Meets international standard codes

### OUR REMANUFACTURING & TECHNOLOGY CENTER CAN HELP YOU



Quick turnaround time  
for repair



Restore factory  
performance & reliability



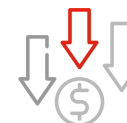
Incorporate safety &  
performance upgrades



Highest  
Performance levels



Enhanced  
efficiency



Cost savings avoiding new  
purchasings



More  
Safety

# IloT Real-time Remote Monitoring

## HELIX™ CONNECTED PLATFORM: REAL-TIME MONITORING

**Helix™ Connected Platform** monitors supply compressed air users with comprehensive machine data in real time, which is required for precise production planning, maximum operational uptime and to protect your investment.

Utilizing the technological advancements IloT (Industrial Internet of Things) and I4.0 (Fourth Industrial Revolution) provide, Helix allows you to receive data and alerts from a cloud-based platform to your PC, tablet or smartphone. **This makes operational efficiency simple by keeping you connected and reducing your costs.**



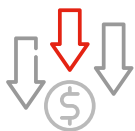
### FEATURES

- Advanced remote analysis
- Real-time knowledge about air systems
- Evaluates historical data
- Predictive maintenance

### GET THE BENEFITS OF HELIX™ CONNECTED PLATFORM



Maximize uptime



Cost savings



Maximises energy efficiency



Highest air quality



More safety



Works to an open standard - easily support compressed air products from other



# EcoPlant

## KEEP YOUR PLANTS RUNNING LONGER WHILE SPENDING LESS

EcoPlant™, in collaboration with Ingersoll Rand, is a machine learning compressed air monitoring and control network that **optimizes utility operation to achieve peak efficiency of compressed air generation.**



EcoPlant™ is a cloud-based SaaS platform that integrates with your compressed air system **to increase energy efficiency and reduce factory downtime.**

[LEARN MORE ABOUT ECOPLANT](#)



## FEATURES

- Brand agnostic solution connects to all compressed air technologies
- Machine learning control for energy efficiency and predictive maintenance
- 24/7 Continuous monitoring and unlimited data logging
- Manage your air system from anywhere in the world

## GET THE BENEFITS OF ECOPLANT™ CLOUD-BASED MONITORING AND CONTROL



Positive cash flow  
on day 1



Reduce your energy  
costs



Prevent unplanned  
downtime



Optimized production  
changes—dynamic control



[REQUEST A QUOTE](#)

Engineered Systems and Services  
[www.ingersollrand.com](http://www.ingersollrand.com)

©2024 Ingersoll Rand. All Rights Reserved.  
All trademarks are the property of Ingersoll Rand.



# Global Presence

Over 70 years of experience managing and implementing engineered-to-order centrifugal air and gas packages for engineering companies, EPC contractors and end-users.



## Sales office:

Ingersoll Rand Italy  
SP Cassanese, 108  
20052 Vignate (Milan), Italy  
Phone: +39 02 950561



## Manufacturing facility:

Ingersoll Rand Italy  
SP Cassanese, 108  
20052 Vignate (Milan), Italy  
Phone: +39 02 950561

Ingersoll Rand US  
3101 Broadway  
14227 Buffalo (NY), United States  
Phone: +1 716-896-6600

Ingersoll Rand China  
4MXH+C98, Pangjin Rd  
215217, Wujiang (Suzhou, Jiangsu)  
China

## How to contact us



Online  
enquiry

