



An Ingersoll Rand Business

2
0
2
5



Our Pumps Are Your Solution

HVAC | Plumbing | Refrigeration



Table of Contents

Residential Grade Condensate Pumps.....5

- Mini-Split Condensate Pumps
 - Remote Sensor (HAR-X)
 - Universal Corner (HAD-X)
- Reservoir Condensate Pumps
 - HAT-X Series
- Light Commercial Grade Condensate Pumps
 - PABX Series

Commercial Grade Condensate Pumps..... 15

- Plenum Rated Condensate Pumps
 - A3X/A5X Series
 - A2X-1965 Series
 - KL-1DG Series
- Commercial Grade Condensate Pumps
 - A2SA-X Series
 - L4X Series
 - SC-1AX Series
 - AL2X Series

Utility Sink Pumps.....31

- LTP/LTS Reservoir Series Pumps
- LTA Series Pumps

Refrigerated Display Case Pumps.....37

- HDP-AI-X

Ice Machine Pumps41

- HRIM-X

Drain Pan Safety Switch..... 46

Performance Is Our Standard

Quality is our hallmark, and innovation is our future.

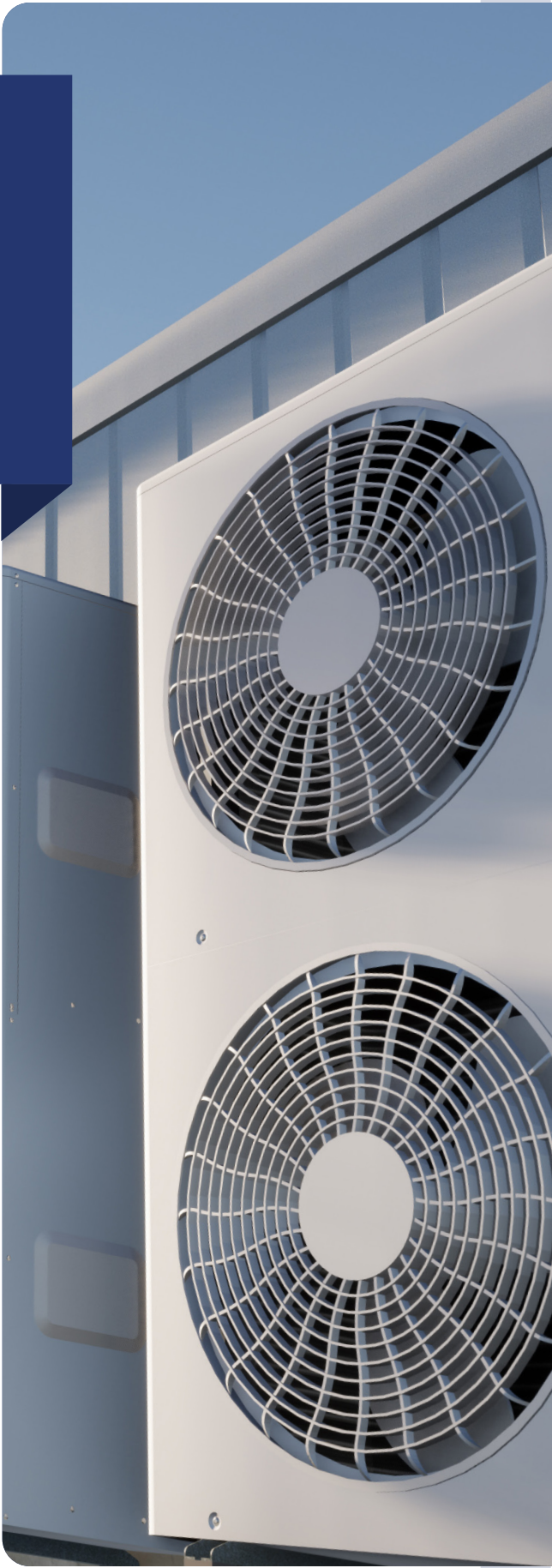
For over 60 years, Hartell has offered a range of durable and effective pump solutions. Designed to prevent damage and ensure manageable maintenance, our full line of high-quality condensate removal, ice machine, and utility sink drain pumps for HVAC, refrigeration, thermal management, and ice applications, are trusted by major OEMs and contractors.

Committed to unparalleled longevity and safety, Hartell pumps are manufactured to strict quality standards in ISO-certified facilities. As such, our reliable pumps are utilized in hospitality industries and critical infrastructure sectors, including data centers and healthcare.

All of Hartell's models come with standard built-in secondary safety switches to prevent failure and potential water damage and a 1 year warranty.

With operations in the USA and Sunderland, UK Hartell is active in over 50 countries spanning Europe and the Americas.

For more information, **visit hartell.com.**





Residential Grade Condensate Pumps

Hartell's pumps help make life enjoyable

Application of Residential Condensate Removal Pumps

Air conditioners, refrigerators, humidifiers, dehumidifiers and other types of equipment, produce condensate in different ways, requiring specialized equipment that can handle a range in temperature and volume.

Hartell's HAD & HAR models are designed for use with mini-split systems and come with a maximum cooling capacity that helps prevent misapplication and potential failures. HAD & HAR are also suitable for air conditioning equipment up to 15 kW/45,000 BTUs.

Our PABX, HAD, HAR & HAT range of AC&R condensate pumps offer pumping heads up to 26 ft (8 m) and flow rates of up to 155 GPH (586 LPH), ideally suited for use with low-temperature condensate equipment like air conditioning, commercial refrigeration and other condensate furnace applications.

Pump Selection and Sizing

Choosing the right condensate pump requires careful consideration of several factors: the temperature of the condensate, its production rate and the maximum pumping head. The pump should be capable of handling the maximum condensate flow at the required discharge head without the pump running continuously. Additionally, the cooling capacity of the equipment, the discharge run (both vertical and horizontal), and the specific application must be taken into account to ensure optimal performance.

Mini-Split Condensate Pumps

REMOTE SENSOR (HAR-X)

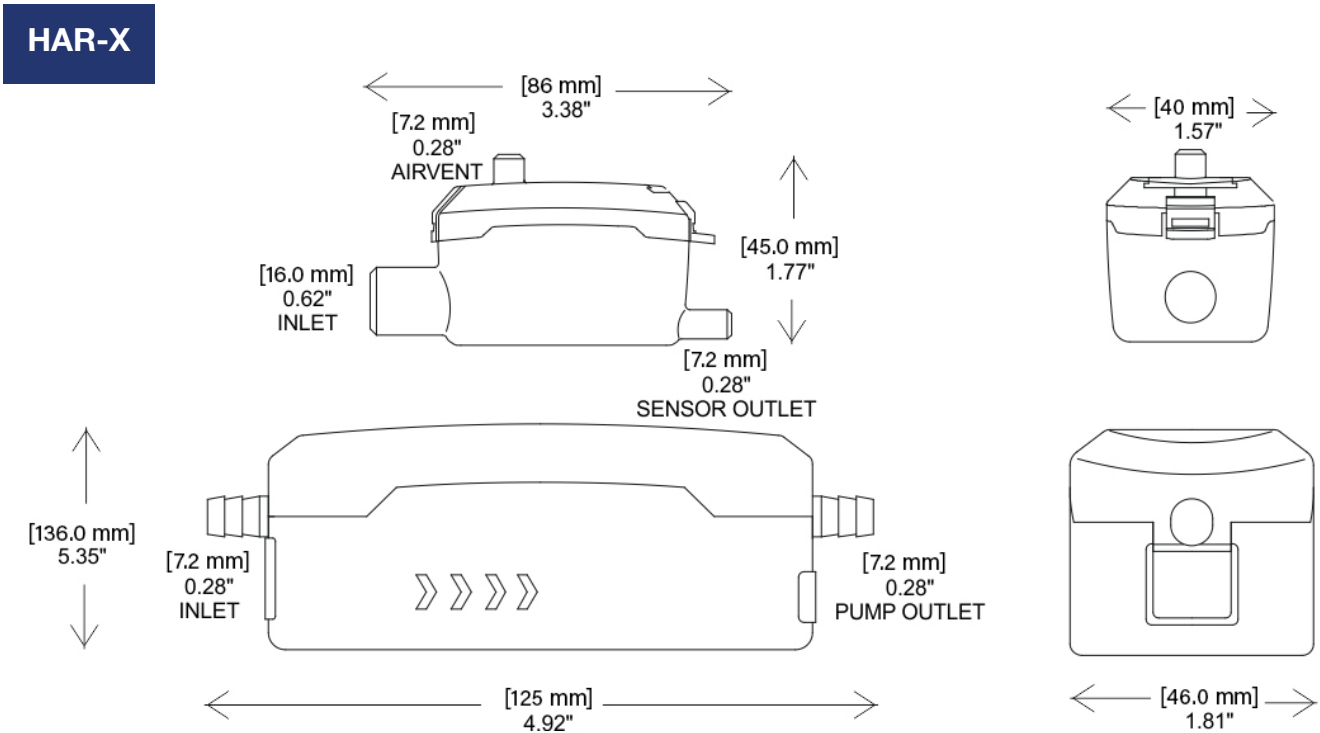
A range of condensate pumps for installation where the sensor can be mounted internally to the indoor unit and the pump is mounted remotely. Suitable for ductless systems up to 15 kW (45,000 BTU) and pumping heads up to 26 ft. The pumps come standard with high-level alarm, volt-free contacts and motor overload protection. These advanced mini-split pumps offer high flow rates with compact construction and easy assembly, ensuring a hassle-free and reliable cooling experience.

KEY FEATURES

- **Max Temp:** 122°F (50°C)
- **Inlet:** 0.4" (16 mm)
- **Outlet:** 0.27" (7 mm)
- **Vent Size:** 0.27" (7 mm)
- **Noise Level:**
HAR-8: 19 dBA
HAR-15: 21 dBA
- **Power Cord Type:** Cord and molded plug
- **Power Cord Length:** 4' (1.2 m)
- **Dimensions:** 6.88" x 10.43" x 2.52"
(17 x 26.5 x 6 cm)
- **Weight:** 1.25 lbs (0.6 kg)

BENEFITS

- Ultra-quiet diaphragm technology
- No vibration



	HAR-8 #861017	HAR-15 #861018
Voltage	100-230	100-230
Hz	50-60	50-60
Amps	0.02	0.02
Watts	4	4
Electrical hp	0.003	0.004

	HAR-8	HAR-15
Max lift	26' (7 m)	26' (7 m)
2' (0.6 m)	3.54 GPH (13.7 LPH)	6.33 GPH (24.6 LPH)
4' (1.22 m)	2.94 GPH (11.4 LPH)	5.27 GPH (20.46 LPH)
6' (1.8 m)	2.34 GPH (9.08 LPH)	4.22 GPH (17.67 LPH)
12' (3.7 m)	1.84 GPH (7.1 LPH)	2.64 GPH (10.25 LPH)
18' (5.5 m)	1.64 GPH (6.37 LPH)	2.37 GPH (9.20 LPH)

Mini-Split Condensate Pumps

UNIVERSAL CORNER (HAD-X)

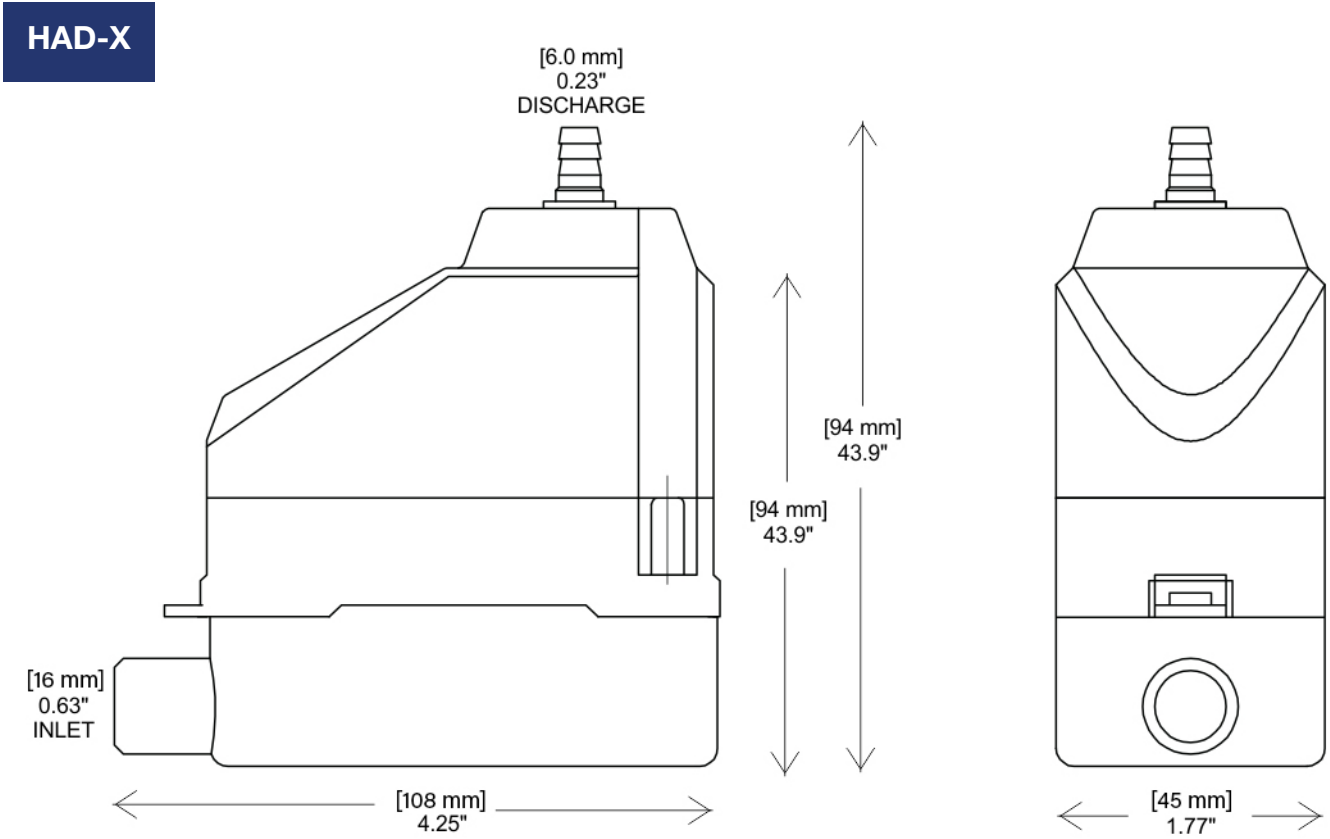
A range of condensate pumps for installation inside plastic ducting alongside the insulated cooling pipes. Suitable for all types of AC equipment up to 15 kW (45,000 BTU) and pumping heads up to 18 ft. The pumps come standard with high-level alarm, volt-free contacts and motor overload protection. These advanced mini-split pumps offer high flow rates with compact construction and easy assembly, ensuring a hassle-free and reliable cooling experience.

KEY FEATURES

- **Max Temp:** 122°F (50°C)
- **Inlet:** 0.4" (16 mm)
- **Outlet:** 0.27" (7 mm)
- **Vent Size:** 0.27" (7 mm)
- **Noise Level:**
HAD-8: 19 dBA
HAD-15: 21 dBA
- **Power Cord Type:** Cord and molded plug
- **Power Cord Length:** 5' (1.5 m)
- **Dimensions:** 6.88" x 10.43" x 2.52"
(17 x 26.5 x 6 cm)
- **Weight:** 1.25 lbs (0.6 kg)

BENEFITS

- Ultra-quiet diaphragm technology
- No vibration



	HAD-8 #861019	HAD-15 #861020
Voltage	100-230	100-230
Hz	50-60	50-60
Amps	0.02	0.02
Watts	4	4
Electrical hp	0.004	0.004

	HAD-8	HAD-15
Max lift	26' (7 m)	26' (7 m)
2' (0.6 m)	3.54 GPH (13.7 LPH)	6.33 GPH (24.6 LPH)
4' (1.22 m)	2.94 GPH (11.4 LPH)	5.27 GPH (20.46 LPH)
6' (1.8 m)	2.34 GPH (9.08 LPH)	4.22 GPH (17.67 LPH)
12' (3.7 m)	1.84 GPH (7.1 LPH)	2.64 GPH (10.25 LPH)
18' (5.5 m)	1.64 GPH (6.37 LPH)	2.37 GPH (9.20 LPH)

Reservoir Condensate Pumps

HAT-X SERIES

The HAT-X product line offers a range of reservoir pumps with varying tank capacities, pumping heads and features that are easy to install and maintain. All reservoir pumps come with an auxiliary safety switch, fan cooling for cool and stable running operation, high-level alarms and motor overload protection.

KEY FEATURES

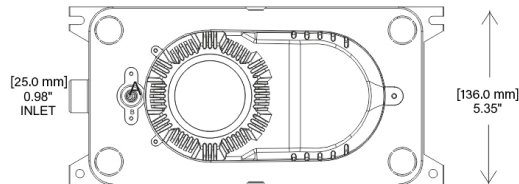
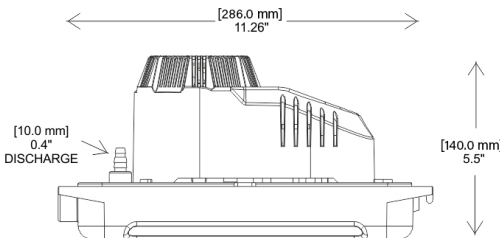
- **Max Temp:** 122°F (50°C)
- **Voltage:** 115-230 V / 50-60 Hz
- **Inlet:** 1" (25 mm)
- **Alternate Inlet:** 1" (25 mm)
- **Outlet:** 0.4" (10 mm)
- **Power Cord Type:** Cord and molded plug
- **Power Cord Length:** 4' (1.2 m)

BENEFITS

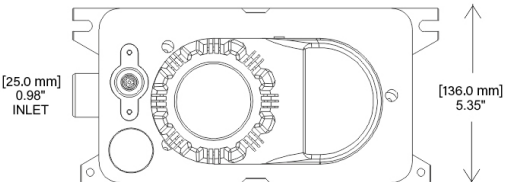
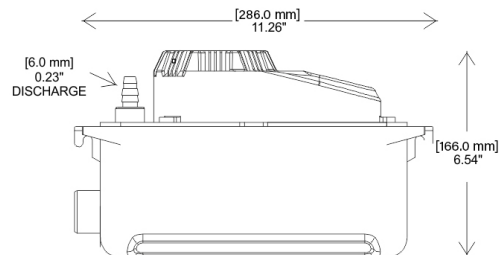
- 13 ft (4 m) pumping head
- Built-in check valve
- High flow rate suitable for large air conditioning units



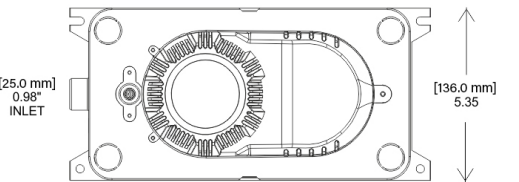
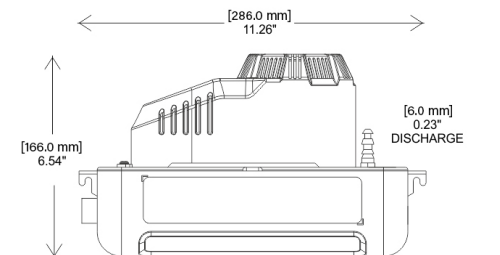
HAT-XLP



HAT-XDC



HAT-XLT



	HAT-1LP #861023		HAT-2LP #861024		HAT-1DC #861025		HAT-2DC #861026		HAT-1LT #861021		HAT-2LT #861022	
Voltage	115-230				115-230				115-230			
Hz	50-60				50-60				50-60			
Amps	0.53	0.26			0.13	0.07			0.53	0.26		
Watts	60 W				15 W				60 W			
Electrical hp	0.08				0.02				0.08			
Noise Level	48 dBA				26 dBA				28 dBA			
Dimensions	6 x 12 x 7.32" (15 x 30 x 18.6 cm)				6 x 12 x 6.3" (15 x 30 x 16 cm)				4.33 x 9 x 5" (11 x 23 x 12.7 cm)			
Weight	5 lbs (2.3 kg)				4.6 lbs (2 kg)				1.78 lbs (0.8 kg)			
Tank Capacity	0.264 gal (1 L)				0.264 gal (1 L)				0.475 gal (1.8 L)			

	HAT-XLP	HAT-XDC	HAT-XLT
Max lift	13' (4 m)	13' (4 m)	13' (4 m)
2' (0.6 m)	31 GPH (120 LPH)	37.78 GPH (146.73 LPH)	29.1 GPH (113 LPH)
4' (1.22 m)	29.6 GPH (115 LPH)	35.2 GPH (137 LPH)	27.7 GPH (103.8 LPH)
6' (1.8 m)	28.4 GPH (110 LPH)	32.72 GPH (127 LPH)	26.4 GPH (100 LPH)
12' (3.7 m)	25 GPH (95 LPH)	12 GPH (45 LPH)	10.5 GPH (40 LPH)

Light Commercial Grade Condensate Pumps

PABX SERIES

The PABX is Hartell's light commercial condensate pump, rounding out our condensate line. It is the ideal pump for applications, such as gas condensing furnaces, requiring higher lift and greater capacity than traditional residential condensate pumps. The PABX has an integral full-flow check valve and a high torque motor. A safety auxiliary switch and three inlets, including an alternate inlet at the base, come standard in this model.

KEY FEATURES

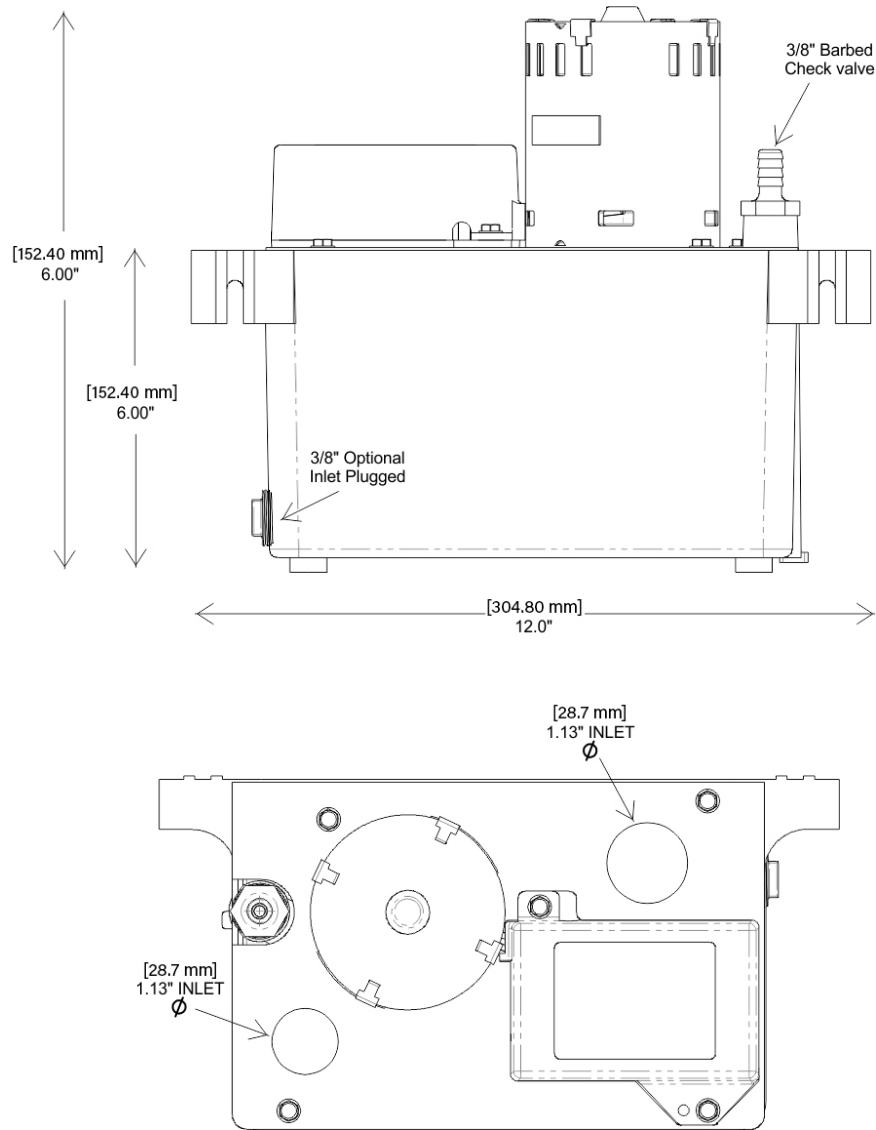
- **Max Temp:** 110°F (43°C)
- **Inlet:** two 1-1/8" (28.5 mm), one 1-3/8" (35 mm)
- **Alternate Inlet:** 3/4" (19 mm) NPT, plugged
- **Outlet:** 3/8" (9.5 mm) Barbed
- **Noise Level:** 48 dBA
- **Power Cord Type:** Cord and molded plug
- **Power Cord Length:** 4' (1.2 m)
- **Dimensions:** 7 x 12 x 11" (17 x 30 x 28 cm)
- **Weight:** 6 lbs (2.7 kg)
- **Tank Capacity:** 1 gal (3.8 L)

BENEFITS

- Four-quart heavy-duty ABS plastic reservoir

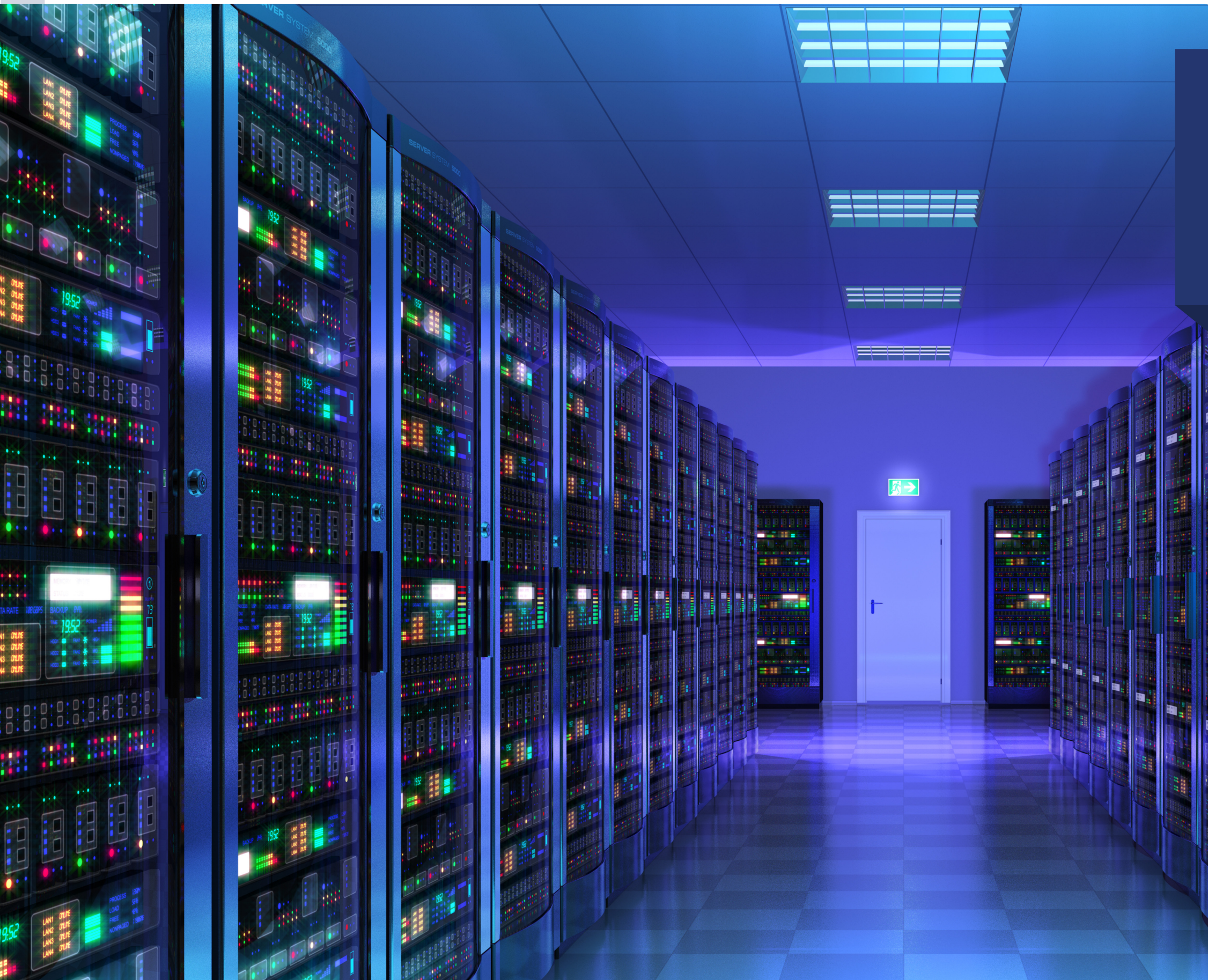


PABX



	PABX-115 #801321	PABX-230 #801322
Voltage	115	230
Hz	60	60
Amps	1.60	0.84
Watts	184	194
Electrical hp	0.25	0.26

	PABX-115	PABX-230
Max lift	22' (6.7 m)	22' (6.7 m)
2' (0.6 m)	180 GPH (700 LPH)	180 GPH (700 LPH)
4' (1.22 m)	165 GPH (640 LPH)	165 GPH (640 LPH)
6' (1.8 m)	155 GPH (586 LPH)	155 GPH (586 LPH)
12' (3.7 m)	135 GPH (511 LPH)	135 GPH (511 LPH)
18' (5.5 m)	90 GPH (340 LPH)	90 GPH (340 LPH)



Commercial Grade Condensate Pumps

Hartell's pumps are redefining the commercial condensate pump market

Application of Commercial Grade Condensate Pumps

High Temperature Condensate Applications

Hartell pumps are designed with oil- and chemical-resistant high-temperature-rated materials with robust design elements to provide a new standard of quality and long service life. Our commercial condensate pumps range up to 212°F (100°C). We provide three levels of motor bearing protection from steam and water splash to ensure maximum motor life.

High Capacity Condensate Applications

Hartell pumps include large-volume reservoirs for applications involving high surges of water. Our pumps are particularly suited for commercial ice machines and the high volumes of water produced during the cleaning flush cycles as well as commercial and industrial air conditioning systems, large refrigeration units and multiple-unit installations to tie several drains into one disposal pump.

Plenum Air-Handling Applications

Hartell PlenumPlus™ pumps are UL 60335:2025 tested and meet all applicable NFPA codes. In the event of a fire, they won't give off excessive heat or smoke, making PlenumPlus pumps the safest pumps in the industry in air-handling spaces.

Plenum Rated Condensate Pumps

A3X/A5X SERIES

Hartell's Commercial Grade, High-Temperature Solution for Air Handling Spaces

Hartell's A3/A5 series makes handling condensate easy with an exceptionally robust design, fully automatic operation, high pumping capacity, and large high-temperature polypropylene reservoir. The reversible reservoir allows installation flexibility to fit various applications and spaces. Engineered for commercial applications, this series features motor bearings with double protection against water splash and steam vapor, a stainless steel shaft for corrosion resistance, and is specifically designed for condensate return in plenum air-handling spaces, ensuring minimal heat and smoke emission in case of fire.

KEY FEATURES

- **Max temp:** 212°F (100°C)
- **Inlet:** 3/4" (19 mm) Barbed
- **Alternate Inlet:** 3/4" (19 mm) Barbed, plugged
- **Noise level:** 48 dBA
- **Power Cord Type:** Hardwired
- **Dimensions:** 12 x 6 x 10.5" (30 x 15 x 26 cm)
- **Weight:** 11 lbs (5 kg)
- **Tank Capacity:** 1 gal (3.8 L)

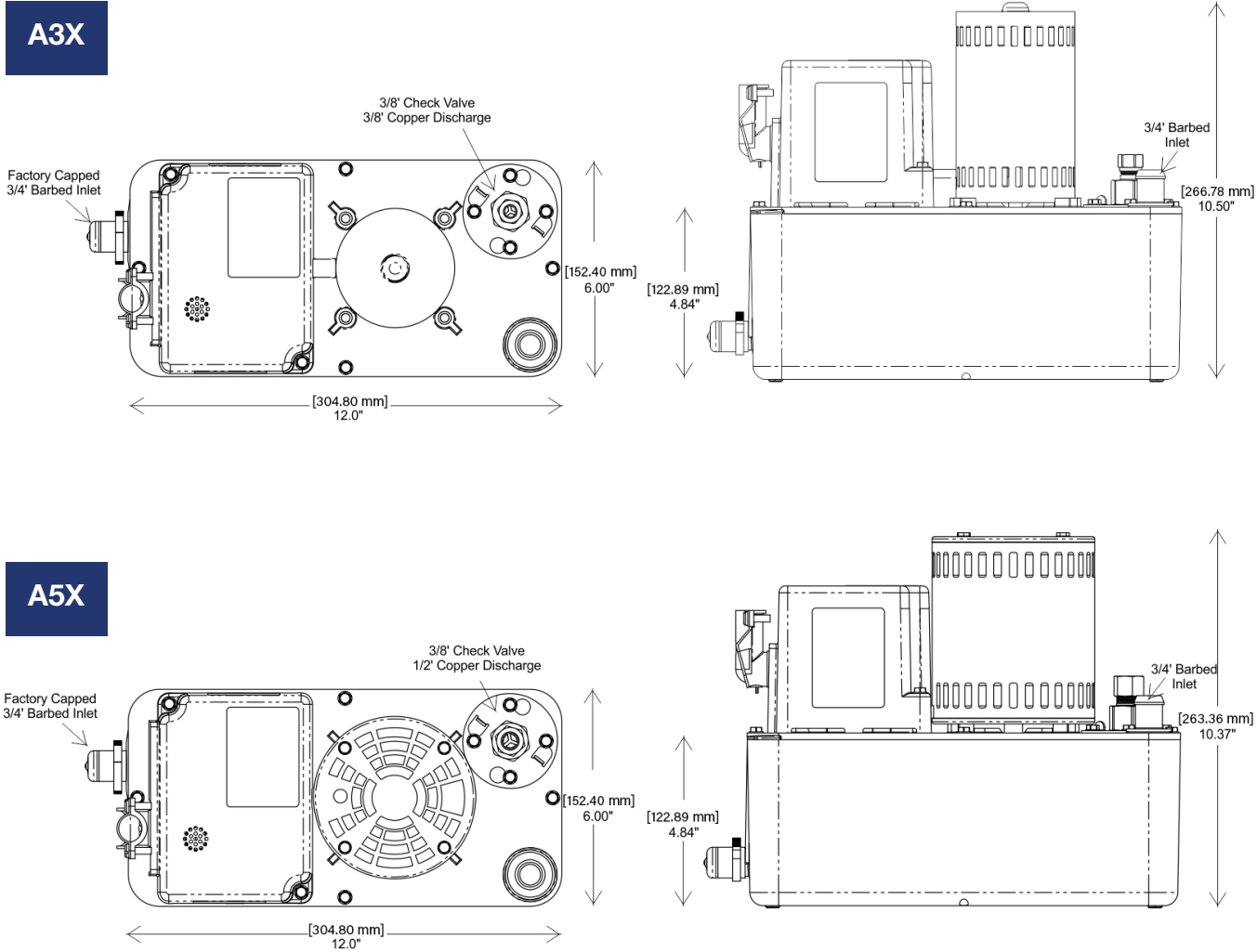
BENEFITS

- UL 2043 Plenum Rated
- 3 lead wires and conduit conversion
- Built-in check valve and quick disconnect discharge for easy servicing and cleaning
- Stainless steel shaft for corrosion resistance
- Inlet and discharge rotate to reduce strain on tubing and piping



*Hartell's Model A3 and A5 have been tested to and yielded results that fell within the acceptance criteria of UL standard 2043, Fourth Edition, "Fire Test for Heat and Visible Smoke Release for Discrete Products and Their Accessories Installed in Air-Handling Spaces."

	A3X-115 #806029	A3X-230 #806028	A3X-277 #806030	A5X-115 #806025	A5X-230 #806026	A5X-460 #806027
Voltage	115	208-230	277	115	208-230	380-460
Hz	60	60	60	60	60	60
Amps	1.99	1.06	0.87	5.00	2.44	1.10
Watts	225	236	241	575	497	506
Electrical hp	0.30	0.31	0.32	0.77	0.66	0.67
Outlet Size	3/8" (9.5 mm) Copper					
	1/2" (12.7 mm) Copper					



	A3X	A5X
Max lift	30' (9 m)	60' (18 m)
2' (0.6 m)	379 GPH (1,472 LPH)	585 GPH (2,272 LPH)
4' (1.22 m)	365 GPH (1,417 LPH)	578 GPH (2,244 LPH)
6' (1.8 m)	351 GPH (1,329 LPH)	550 GPH (2,082 LPH)
12' (3.7 m)	309 GPH (1,170 LPH)	528 GPH (1,999 LPH)
18' (5.5 m)	245 GPH (927 LPH)	495 GPH (1,874 LPH)
24' (7.3 m)	180 GPH (681 LPH)	462 GPH (1,749 LPH)
36' (10.97 m)	-	390 GPH (1,476 LPH)
48' (14.63 m)	-	306 GPH (1,1158 LPH)

Plenum Rated Condensate Pumps

A2X-1965

Solid Cast Aluminum Commercial Grade Condensate Pump

Hartell's A2X-1965 condensate pump makes handling condensate easy with an exceptionally robust design, high pumping capacity, and large cast aluminum reservoir. This model is particularly suited for condensate return in a plenum air-handling space, which means in the event of a fire, it won't give off excessive heat or smoke.

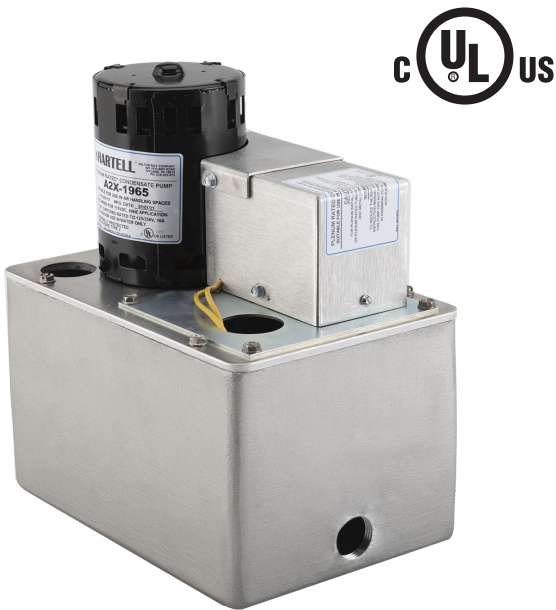
KEY FEATURES

- **Max Temp:** 150°F (65°C)
- **Inlet:** two 1-1/4" (31.75 mm), one 1-3/8" (40 mm)
- **Alternate Inlet:** 3/4" (19 mm) FNPT, plug supplied
- **Outlet:** 3/8" (9.5 mm) Barbed
- **Vent Size:** 0.27" (7 mm)
- **Noise Level:** 48 dBA
- **Power Cord Type:** Hardwired
- **Dimensions:** 9 x 6 x 10" (23 x 15 x 25 cm)
- **Weight:** 14 lbs (6.3 kg)
- **Tank Capacity:** 1 gal (3.8 L)

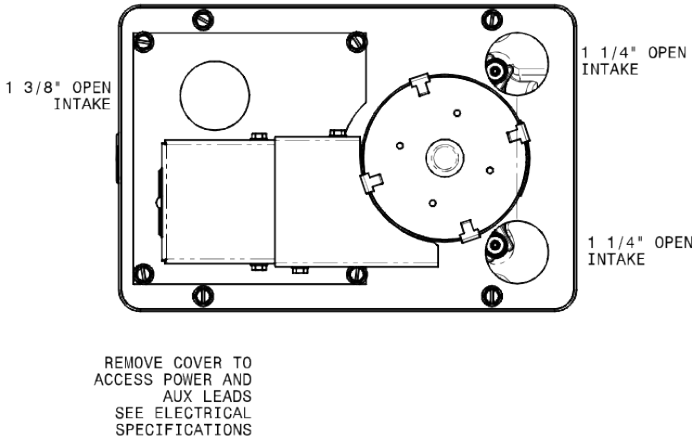
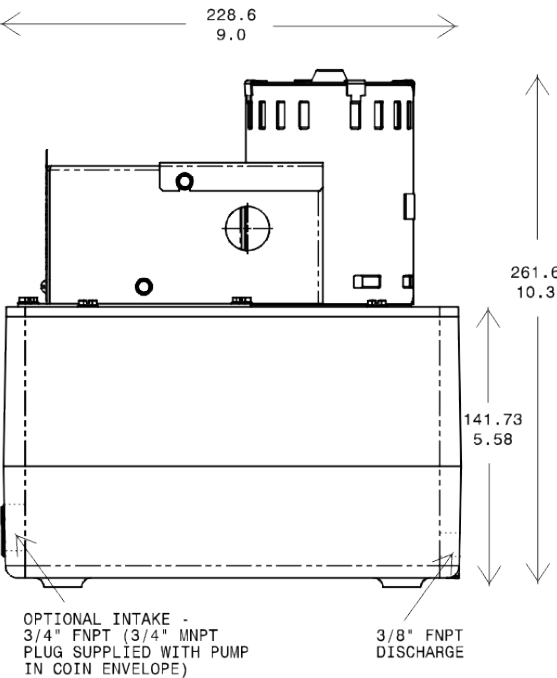
BENEFITS

- UL 2043 Plenum Rated
- Easy wire access
- Dual voltage: 115V/230 V, thermally protected motor
- Multiple piping arrangements
- Maintenance-free ball bearing design eliminates need for lubrication
- Auxiliary safety switch

*Hartell's Model A2X-1965 has been tested to and yielded results that fell within the acceptance criteria of UL standard 2043, Fourth Edition, "Fire Test for Heat and Visible Smoke Release for Discrete Products and Their Accessories Installed in Air-Handling Spaces."



A2X-1965



	A2X-1965 #851117
Voltage	115-230
Hz	60
Amps	3.10
Watts	232
Electrical hp	0.31

	A2X-1965
Max lift	20' (6.4 m)
2' (0.6 m)	415 GPH (1,611 LPH)
4' (1.22 m)	380 GPH (1,476 LPH)
6' (1.8 m)	345 GPH (1,340 LPH)
12' (3.7 m)	240 GPH (908 LPH)
18' (5.5 m)	150 GPH (582 LPH)

Plenum Rated Condensate Pumps

KL-1DG

High-Temperature, Low-Profile Commercial Grade Condensate Pump

When a low-profile pump is required, Hartell's KL-1DG is the pump of choice. The KL-1DG series has a high-impact, corrosion-resistant, high-temperature polypropylene, slimline reservoir with built-in check valve. This model can handle temperatures up to 212°F and is also suited for condensate return in a plenum air-handling space, which means in the event of a fire, it won't give off excessive heat or smoke.

KEY FEATURES

- **Max Temp:** 212°F (100°C)
- **Inlet:** two 1" (25 mm) NPT
- **Outlet:** 3/8" (9.5 mm) Barbed
- **Noise Level:** 48 dBA
- **Power Cord Type:** Hardwired
- **Dimensions:** 10 x 5.5 x 4.75" (25 x 14 x 12 cm)
- **Weight:** 6 lbs (2.7 kg)
- **Tank Capacity:** 1 qt (1 L)

BENEFITS

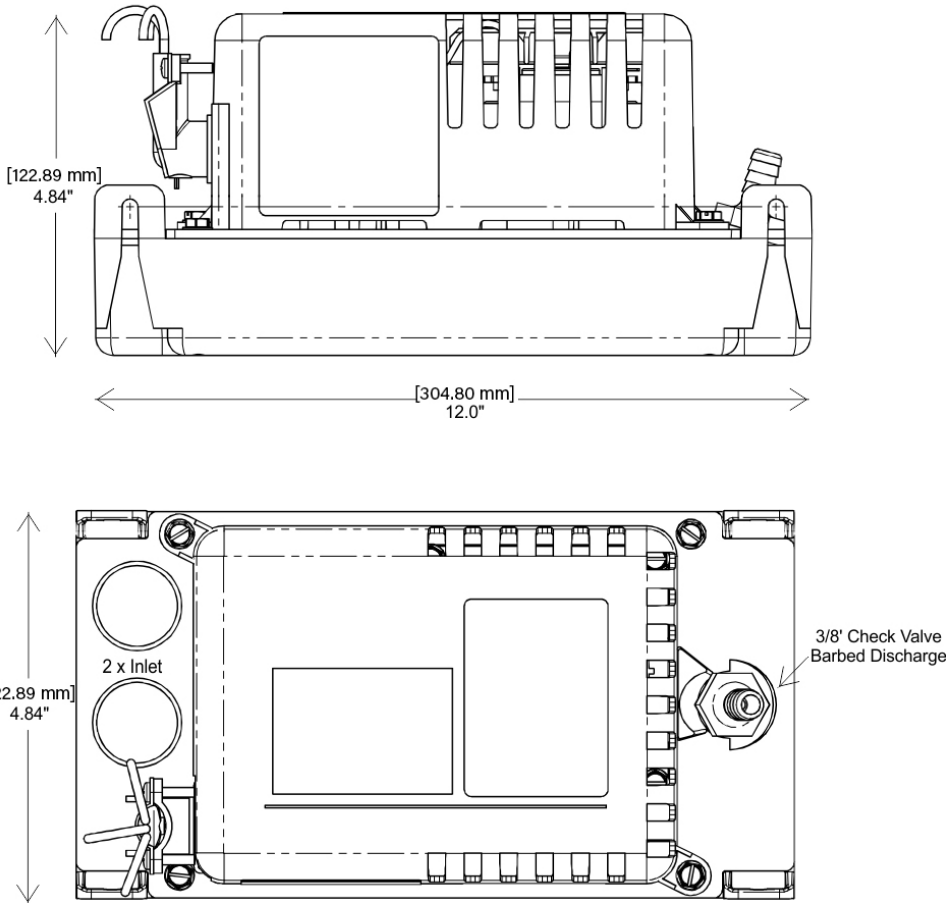
- UL 2043 Plenum Rated
- 1-quart reservoir, low-profile height of 1-3/4 in
- Auxiliary safety switch



*Hartell's Model KL-1DG has been tested to and yielded results that fell within the acceptance criteria of UL standard 2043, Fourth Edition, "Fire Test for Heat and Visible Smoke Release for Discrete Products and Their Accessories Installed in Air-Handling Spaces."

	KL-1DG-115 #801030	KL-1DG-230 #801049	KL-1DG-277 #801053
Voltage	115	230	277
Hz	60	60	50/60
Amps	1.40	0.55	0.53
Watts	77	66	73
Electrical hp	0.10	0.09	0.10

KL-1DG



Commercial Grade Condensate Pumps

A2SA-X SERIES PUMPS

Hartell's Model A2SA-X commercial grade condensate pump series defines a new standard of quality and performance to maximize condensation collection and removal. These pumps offer unmatched service life by using oil- and chemical-resistant, high-temperature-rated materials with robust design elements including a solid cast aluminum reservoir, multiple piping arrangements, maintenance-free ball bearing design, stainless steel float and thermally protected motor. Additionally, these pumps offer motor protection from steam and water splash, helping to ensure maximum motor life. The A2-SA commercial grade condensate pump is designed for heavy-duty removal of high-temperature condensate.

KEY FEATURES

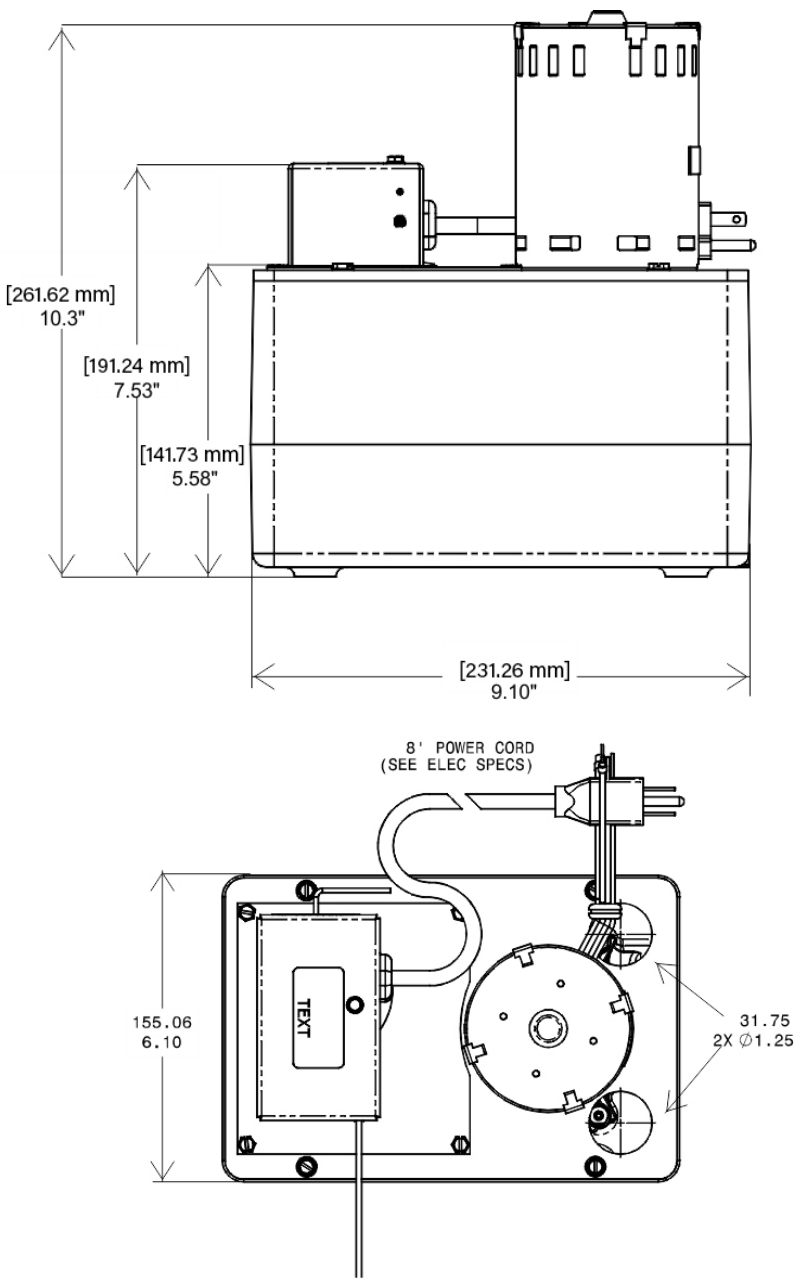
- **Max Temp:** 212°F (100°C)
- **Inlet:** two 1-1/4" (31.75 mm)
- **Alternate Inlet:** 3/4" (19 mm) FNPT, plug supplied
- **Outlet:** 3/8" (9.5 mm) FNPT
- **Noise Level:** 48 dBA
- **Power Cord Type:** Cord and molded plug
- **Power Cord Length:** 6' (1.8 m)
- **Dimensions:** 9 x 6 x 10" (23 x 15 x 25 cm)
- **Weight:** 12 lbs (5.4 kg)
- **Tank Capacity:** 1 gal (3.8 L)

BENEFITS

- Auxiliary safety switch on A2SA-X115 & A2SA-X230
- 1 gallon, heavy-duty, cast aluminum reservoir
- Snap-action switch



A2SA-X



	A2SA-X115 #851126	A2SA-X230 #851127
Voltage	115	230
Hz	60	60
Amps	3.10	1.50
Watts	235	226
Electrical hp	0.31	0.30

	A2SA-X
Max lift	18' (5.48 m)
2' (0.6 m)	215 GPH (835 LPH)
4' (1.22 m)	200 GPH (776 LPH)
6' (1.8 m)	185 GPH (700 LPH)
12' (3.7 m)	139 GPH (526 LPH)
18' (5.5 m)	79 GPH (299 LPH)

Plenum Rated Condensate Pumps

L4X SERIES PUMPS

The L4X series is for pumping large quantities of water and include a 2-gallon cast aluminum reservoir. Used in commercial and industrial air conditioning systems, large refrigeration units, and multiple-unit installations to tie several drains into one disposal pump. Although designed for high volumes, this pump easily fits under utility sinks.

KEY FEATURES

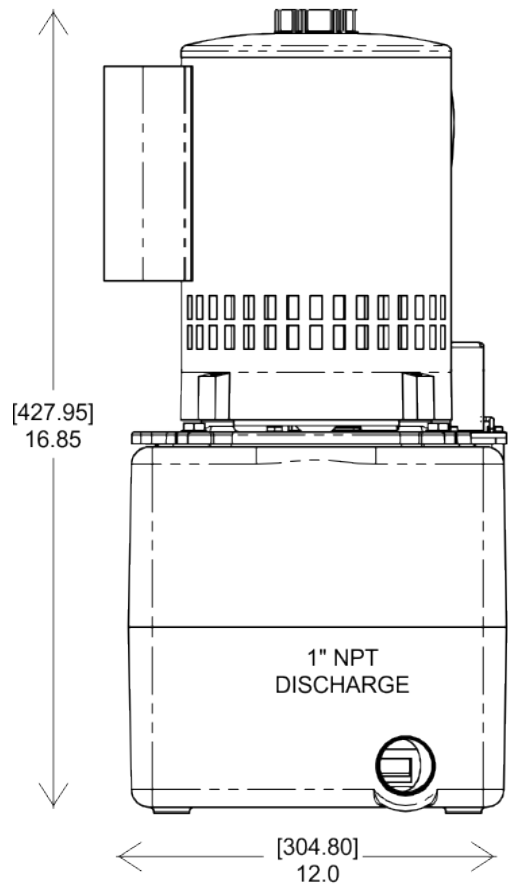
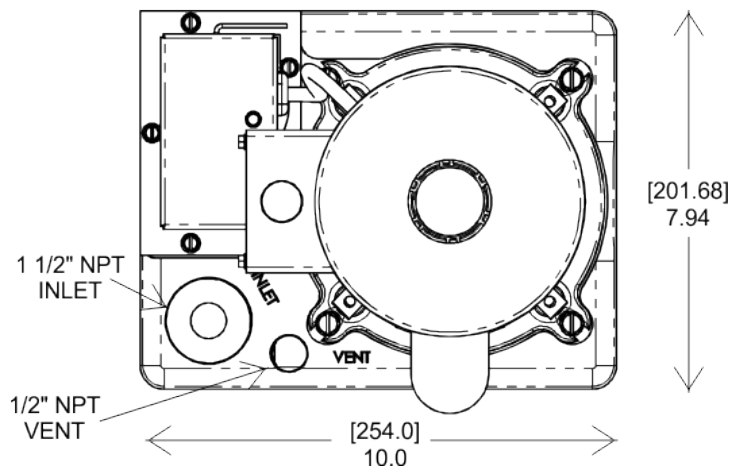
- **Max Temp:** 150°F (65°C)
- **Inlet:** 1-1/2" (38 mm) NPT
- **Alternate Inlet:** 1-1/2" (38 mm) NPT, plug supplied
- **Outlet:** 1" (25 mm) FNPT
- **Vent Size:** 1/2" (12.7 mm) NPT
- **Noise Level:** 48 dBA
- **Power Cord Type:** Hardwired
- **Power Cord Length:** 6' (1.8 m)
- **Dimensions:** 10 x 8 x 17" (25 x 20 x 43 cm)
- **Weight:** 35 lbs (16 kg)
- **Tank Capacity:** 2 gal (7.5 L)

BENEFITS

- 1/2 hp motor, 3,450 rpm
- Integral junction box
- Auxiliary safety switch on model L4X-115/230
- Dual-voltage motor
- Unitized construction



L4X



	L4X-115/230 #851122
Voltage	115-230
Hz	60
Amps	3.70
Watts	425
Electrical hp	0.57

	L4X-115/230
Max lift	36' (10.9 m)
2' (0.6 m)	4,480 GPH (17,400 LPH)
4' (1.22 m)	4,340 GPH (16,856 LPH)
6' (1.8 m)	4,200 GPH (15,898 LPH)
12' (3.7 m)	3,780 GPH (14,308 LPH)
18' (5.5 m)	3,420 GPH (12,946 LPH)
24' (7.3 m)	2,820 GPH (10,674 LPH)
36' (10.97 m)	1,800 GPH (6,813 LPH)

Plenum Rated Condensate Pumps

SC-1AX SERIES PUMPS

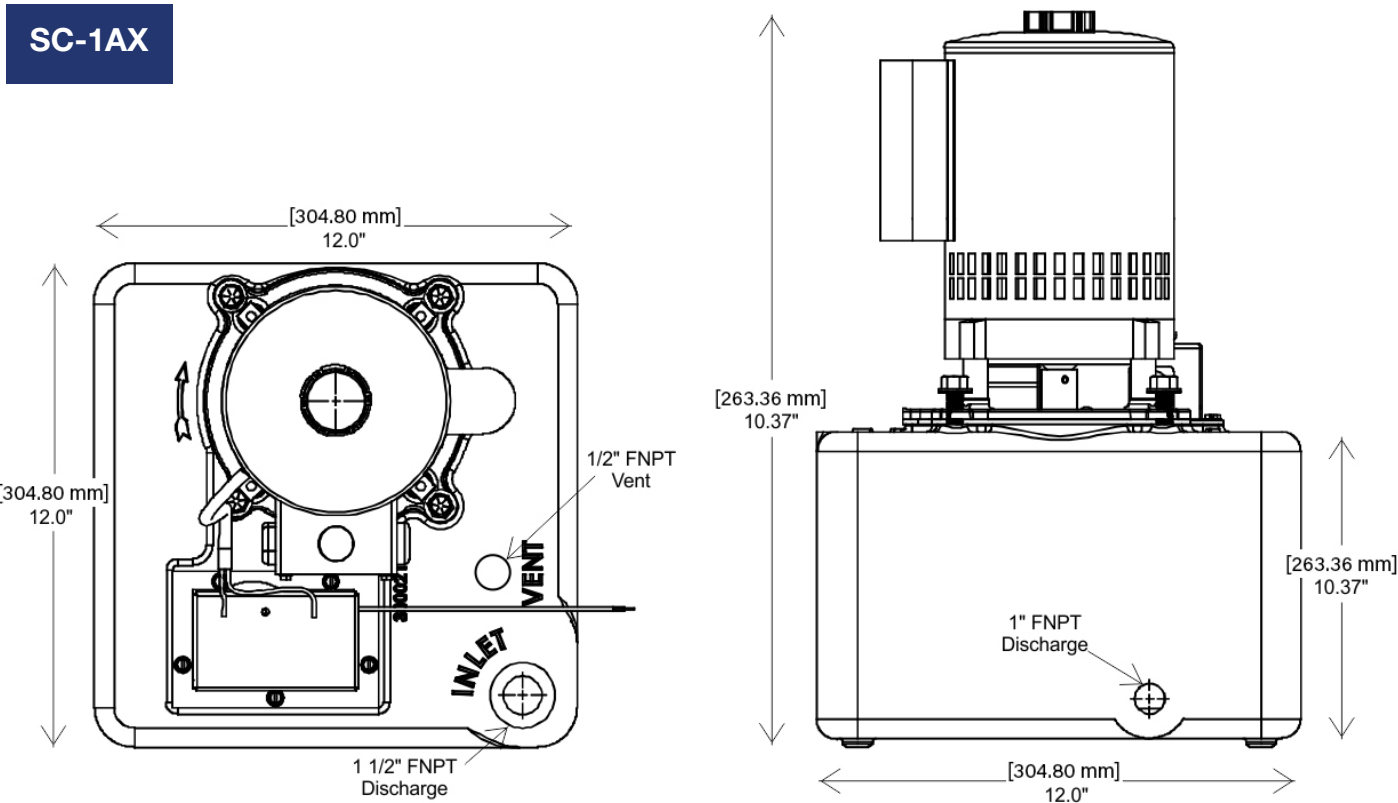
The SC-1AX Steam-Rated Condensate Pump is a powerhouse engineered to meet the demands of high-temperature applications and designed for heavy duty industrial applications. Designed expressly for automatically returning condensate to a collection point where radiation has been added to existing systems below the returns.

KEY FEATURES

- **Max Temp:** 212°F (100°C)
- **Inlet:** 1-1/2" (38 mm) FNPT
- **Outlet:** 3/4" (19 mm) FNPT
- **Vent Size:** 1/2" (12.7 mm) NPT
- **Noise Level:** 48 dBA
- **Power Cord Type:** Hardwired
- **Power Cord Length:** 6' (1.8 m)
- **Dimensions:** 12 x 12 x 19" (30 x 30 x 48 cm)
- **Weight:** 45 lbs (20 kg)
- **Tank Capacity:** 4 gal (15 L)

BENEFITS

- Rated for 2,000 EDR; 480,000 BTU
- Vapor sealed, 4-gallon cast aluminum reservoir
- 1/2 hp, 3,400 rpm motor
- Auxiliary safety switch on model SC-1AX-115/230
- Integral junction box
- Steam rated for 2,000 EDR, 480,000 BTU
- Dual-voltage motor



	SC-1AX-115/230 #851123
Voltage	115-230
Hz	60
Amps	3.70
Watts	425
Electrical hp	0.57

	SC-1AX-115/230
Max lift	36' (10.9 m)
2' (0.6 m)	4,480 GPH (17,400 LPH)
4' (1.22 m)	4,340 GPH (16,856 LPH)
6' (1.8 m)	4,200 GPH (15,898 LPH)
12' (3.7 m)	3,780 GPH (14,308 LPH)
18' (5.5 m)	3,420 GPH (12,946 LPH)
24' (7.3 m)	2,820 GPH (10,674 LPH)
36' (10.97 m)	1,800 GPH (6,813 LPH)

Plenum Rated Condensate Pumps

AL2X SERIES PUMPS

For applications involving high surges of water. Particularly suited for commercial ice machines and high volumes of water produced during the cleaning flush cycles.

KEY FEATURES

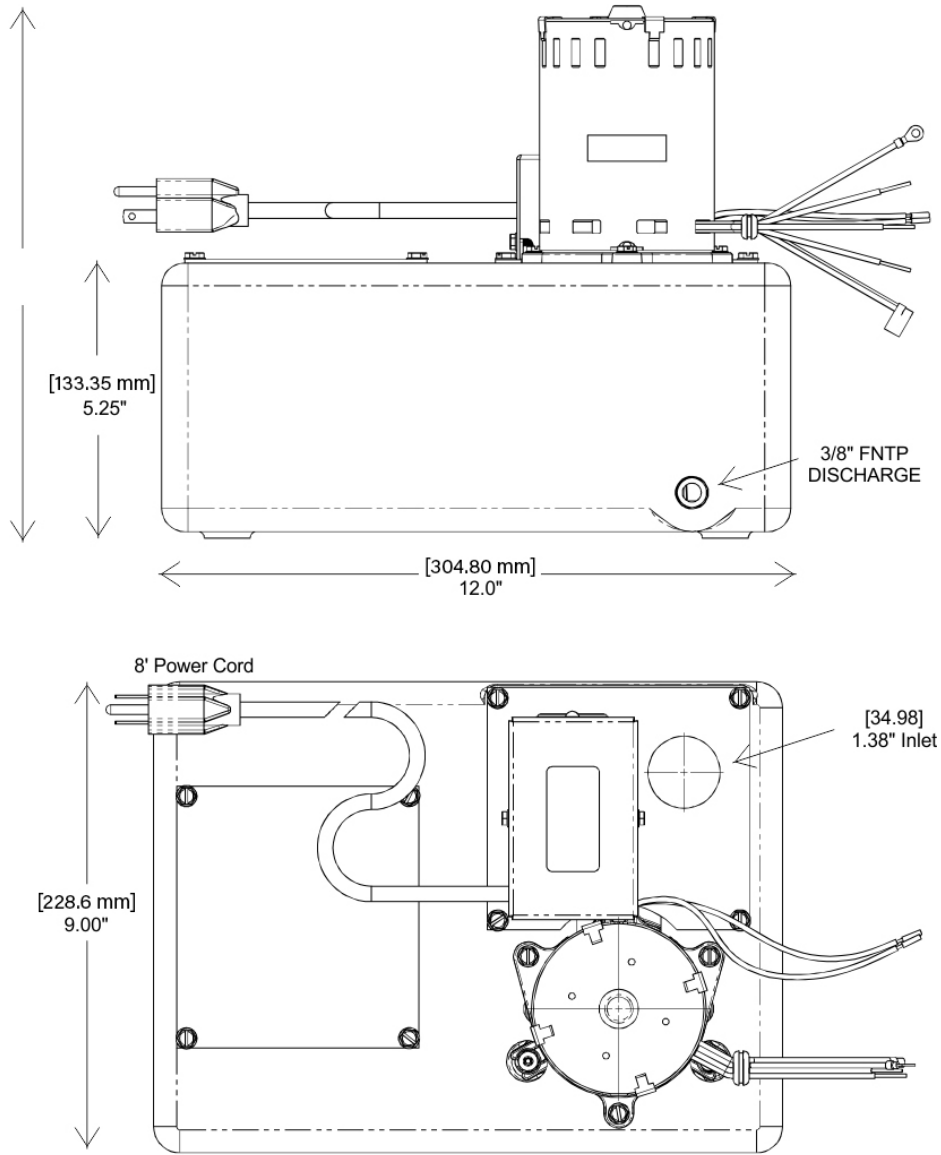
- **Max Temp:** 150°F (65°C)
- **Inlet:** 1-3/8" (40 mm)
- **Outlet:** 3/8" (9.5 mm) FNPT
- **Noise Level:** 48 dBA
- **Power Cord Type:** Cord and molded plug
- **Power Cord Length:** 6' (1.8 m)
- **Dimensions:** 12 x 9 x 10" (30 x 23 x 25 cm)
- **Weight:** 17lbs (7.7 kg)
- **Tank Capacity:** 2 gal (7.5 L)

BENEFITS

- Snap-action switch
- 2-gallon cast aluminum reservoir
- Integral junction box
- Stainless steel shaft
- Thermally protected motor



AL2X



	AL2X-115 #851030	AL2X-230 #851032
Voltage	115	230
Hz	60	60
Amps	3.10	1.50
Watts	235	226
Electrical hp	0.31	0.30

	AL2X
Max lift	18' (5.48 m)
2' (0.6 m)	215 GPH (835 LPH)
4' (1.22 m)	200 GPH (776 LPH)
6' (1.8 m)	185 GPH (700 LPH)
12' (3.7 m)	139 GPH (526 LPH)
18' (5.5 m)	79 GPH (299 LPH)



Utility Sink Pumps

Waste Water Drain Pumps

Unitized design and rugged construction

Hartell waste water drain and laundry pumps are designed for laundry and wet bar applications where the sink or appliance is installed below the plumbing drain. Our direct mount LTA pumps provide a time-saving solution for wet bars and laundry trays, while our LTP/LTS reservoir-type drain pumps are ideal for laundry trays, utility sinks, and wet bars. Both styles of pumps are best suited for when gravity drainage is not practical and no main stack venting is required.

Currently only available in the US.

Utility Sink Pumps

LTP/LTS RESERVOIR SERIES PUMPS

LTS medium-temp, high-capacity reservoir pump

Heavy-duty pump designed for moving large quantities of water. Used in commercial applications such as laundry, air conditioning, or refrigeration systems, and multiple-unit installations to tie several drains into one disposal pump.

LTP medium-capacity reservoir pump

Designed for laundry and wet bar applications. Primarily used where the sink or appliance is installed below the plumbing drain.

KEY FEATURES

- **Max Temp:** 130°F (54°C)
- **Inlet:** 1-1/2" (38 mm) NPT
- **Outlet:** 1" (25 mm) NPT
- **Vent Size:** 1/2" (12.7 mm) NPT
- **Noise Level:** 35 dBA
- **Power Cord Type:** Cord and molded plug
- **Power Cord Length:** 8' (2.4 m)
- **Dimensions:** 12 x 10 x 17" (30 x 25 x 43 cm)
- **Weight:** 24l bs (11 kg)
- **Tank Capacity:** 2 gal (7.5 L)

BENEFITS

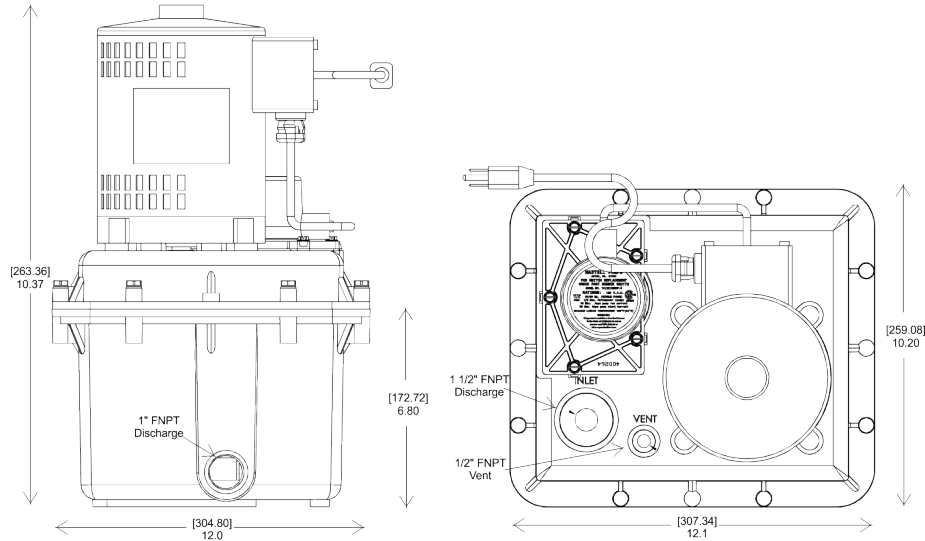
- LTP: 12 ft (3.6 m) shut off
- LTS: 16.5 ft (5 m) shut off
- Suds-proof reservoir
- Unitized construction
- Structural foam polypropylene
- No main stack-vent connection
- Simple installation saves time required*
- Sealed switch assembly
- Fits inside 24 in base cabinets

*NSPC section 11.7.11, check local codes
Currently only available in the US.

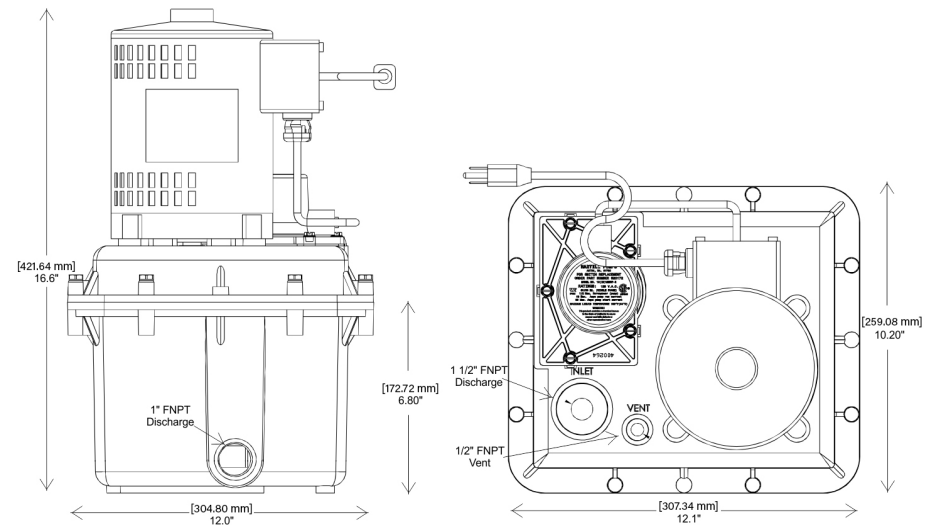


	LTP-1 #801284	LTS-1 #801285
Voltage	115	115
Hz	60	60
Amps	2.50	5.60
Watts	288	644
Electrical hp	0.39	0.86

LTP



LTS



	LTP-1	LTS-1
Max lift	10' (3.05 m)	10' (3.05 m)
2' (0.6 m)	3,246 GPH (12,607 LPH)	3,156 GPH (12,257 LPH)
4' (1.22 m)	2,808 GPH (10,906 LPH)	2,892 GPH (11,232 LPH)
6' (1.8 m)	2,370 GPH (8,971 LPH)	2,628 GPH (9,948 LPH)

Utility Sink Pumps

LTA SERIES PUMPS

Completely self-contained units that are easy to connect directly to laundry tray tubs with simple installation to fit under wet bars, utility sinks, kitchenettes and vanities. Lightweight and compact, these models eliminate reservoirs, traps, extra fittings and costly labor. The LTA-1 includes a pressure-activated switch that turns the pump on when water enters the tub.

KEY FEATURES

- **Max Temp:** 140°F (60°C)
- **Inlet:** 1-1/2" (38 mm) FSPT
- **Outlet:** 1" (25 mm) NPT
- **Vent Size:** 1/2" (12.7 mm) NPT
- **Noise Level:** 35 dBA
- **Power Cord Type:** Cord and molded plug
- **Power Cord Length:** 8' (2.4 m)
- **Dimensions:** 8 x 7 x 14" (20 x 18 x 35.5 cm)
- **Weight:** 19 lbs (9 kg)

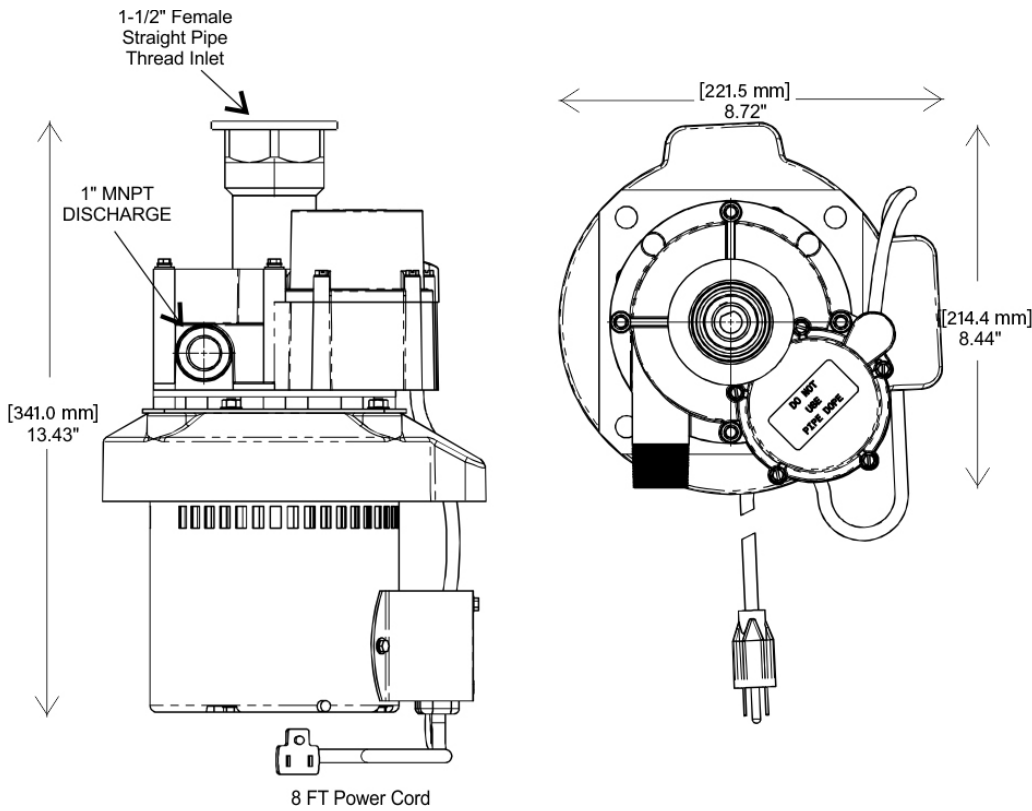
BENEFITS

- Pressure switch
- No traps required
- Fits inside 24 in base cabinets
- ABS high-impact, corrosion-resistant, plastic construction
- No main stack-vent connection required

*NSPC section 11.7.11, check local codes
Currently only available in the US.



LTA



	LTA-1 #802210
Voltage	115
Hz	60
Amps	3.10
Watts	356
Electrical hp	0.47

	LTA-1
Max lift	10' (3.05 m)
2' (0.6 m)	2,520 GPH (9,787 LPH)
4' (1.22 m)	2,040 GPH (7,923 LPH)
6' (1.8 m)	1,560 GPH (6,059 LPH)



Refrigerated Display Case Pumps

For Retail and Hospitality Environments

Smart Pumps with Proactive Alarms

Refrigerated display cases operate more efficiently and trouble free with smart, predictive and preventive care. Hartell smart condensate pumps deliver energy efficiency, self-diagnostic and alarm capabilities, and help ensure the safety of people and protection of assets. Compared to evaporative trays, smart condensate pumps significantly boost energy efficiency. By preventing condensation buildup, they optimize operating conditions, enabling equipment to run more effectively.

Powered by AI technology, our pumps prevent hazards and spills before they happen with features such as predictive analytics and a proactive alarm system, making maintenance easy and cost-effective. These units self-calibrate over a number of cycles and set the ideal alarm parameters based on the installation and refrigeration equipment. If a potential failure is detected, an alarm notification is immediately sent out.

Refrigerated Display Case Pumps

HDP-AI-X

Hartell's condensate pumps for refrigerated display cases include an AI-based proactive alarm technology that provides an advance notification on potential system issues through instant, non-intrusive visual and audible alarm notifications. These notifications provide instant fault diagnosis to help prevent water damage and system downtime.

No specialist commissioning or training for installation is required as Hartell's AI technology is self-calibrating, and the maintenance monitor ensures the pumps are regularly maintained.

KEY FEATURES

- **Max temp:** 122°F (50°C)
- **Inlet:** 1-3/4" (19 mm) (45 mm)
- **Alternate Inlet:**
HDP-AI-H1: 1-3/4" (19 mm) (45 mm)
HDP-AI-V1: N/A
- **Outlet Size:** 1/2" (12.7 mm)
- **Noise level:** 48 dBA
- **Power Cord Type:** Hardwired

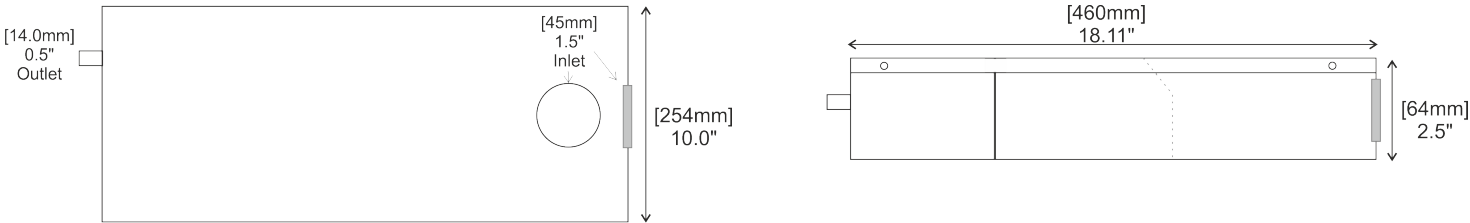
BENEFITS

- BMS interface via volt-free N/C-N/O contacts
- Built-in non-intrusive audible alarm
- Self-calibrating pump monitoring system using Hartell's AI
- Optional multifunction remote visual indicator

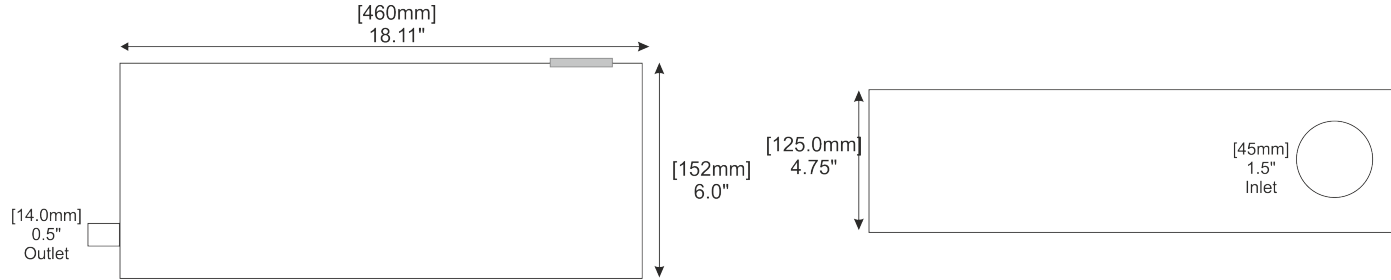


	HDP-AI-H1-115-60 #805010	HDP-AI-H1-230-60 #805011	HDP-AI-V1-115-60 #805012	HDP-AI-V1-230-60 #805013
Voltage	115	230	115	230
Hz	60	60	60	60
Amps	0.20	0.10	0.20	0.10
Watts	24	24	24	24
Electrical hp	0.03	0.03	0.03	0.03
Dimensions	18 x 10 x 3" (45 x 25 x 7.6 cm)		18 x 6 x 5" (45 x 15 x 12.7 cm)	
Weight	7.5 lbs (3.4 kg)		7 lbs (3 kg)	
Tank Capacity	1 gal (3.8 L)		2 gal (7.5 L)	

HDP-HX



HDP-VX



	HDP-AI-X
Max lift	100' (30 m)
2' (0.6 m)	20.4 GPH (79.2 LPH)
4' (1.22 m)	19.9 GPH (77.3 LPH)
6' (1.8 m)	19.1 GPH (74.4 LPH)
12' (3.7 m)	17.2 GPH (66.9 LPH)
18' (5.5 m)	15.3 GPH (59.4 LPH)
24' (7.3 m)	13.4 GPH (52 LPH)
36' (10.97 m)	9.5 GPH (36.9 LPH)
48' (14.63 m)	8.2 GPH (32 LPH)
65' (20 m)	7.3 GPH (28.3 LPH)
100' (31 m)	4.0 GPH (15.5 LPH)



Ice Machine Pumps

Hartell partners with ice machine OEMs to produce distinct styles of ice machine pumps to suit your needs.

Direct Replacement Ice Machine Condensate Pumps

Hartell direct drop-in ice machine replacement pumps are a perfect fit for most ice machine brands, making installation simple and easy. They avoid the hassle that comes with universal-type pumps replacement that require voltage, flow-rate, pressure-rating, and discharge adapters to fit the icemaker's water lines. With Hartell direct drop-in replacement pumps, simply remove the old pump and drop the new Hartell replacement pump in its place. There is no need to modify any of the existing plumbing or electrical connections. Hartell pumps are as reliable as the original OEM pumps because for decades Hartell third-party-manufactured the industry's most renowned ice machine pumps. More importantly, you can trust the reliability and performance of the pump.

Direct Replacement Ice Machine Pumps

HRIM-X

Hartell Direct Replacement Ice Machine Pumps come in four distinct styles and thirteen models to seamlessly integrate into your ice machines, preventing potential system inefficiencies and downtime. We have the largest variety in the industry.

KEY FEATURES

- **Max temp:** 122°F (50°C)
- **Noise level:** 21 dBA
- **Power Cord Length:** 6" (15 cm)
- **Dimensions:** 6.5 x 5 x 10.5" (16.5 x 12.7 x 26 cm)
- **Weight:** 5 lbs (2.3 kg)

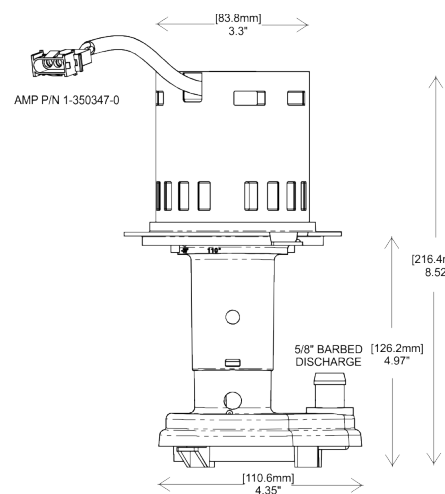
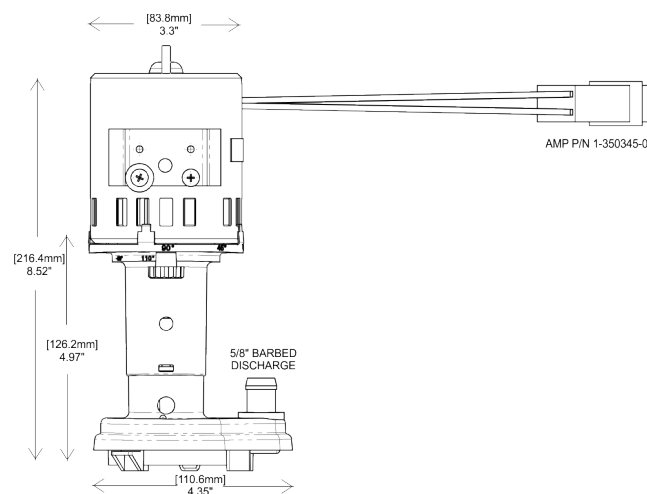
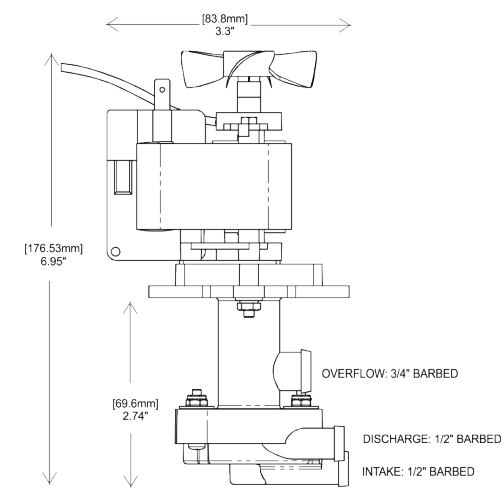
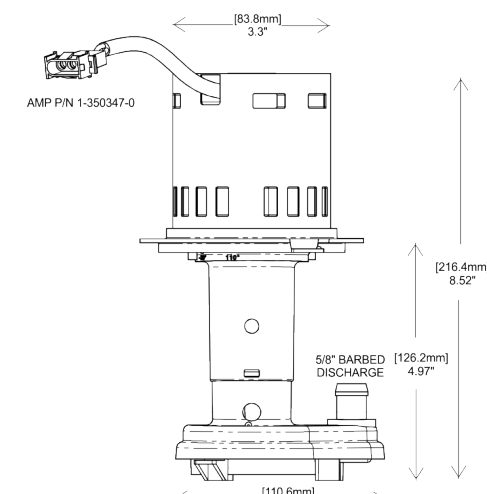
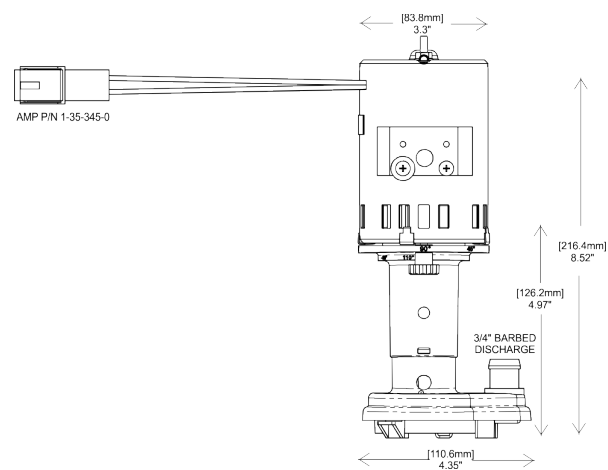
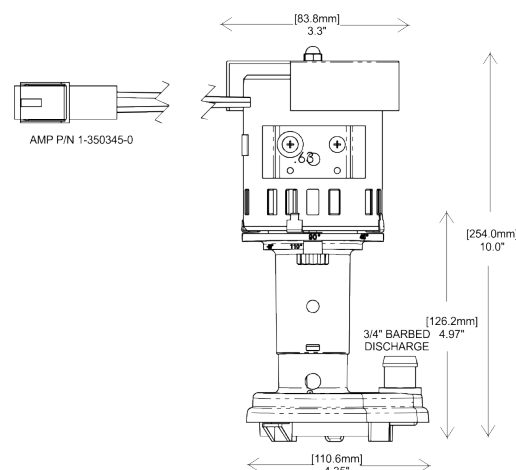
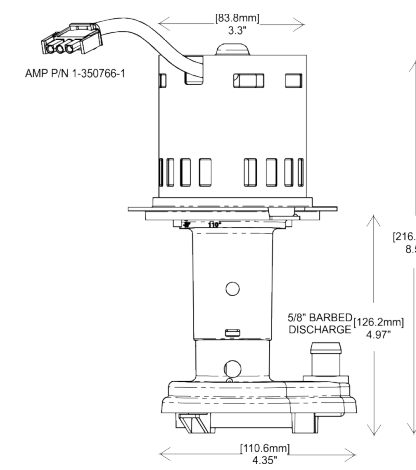
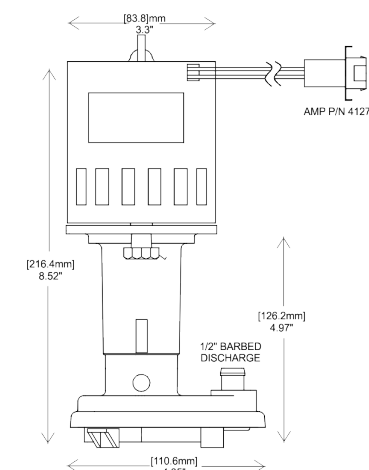
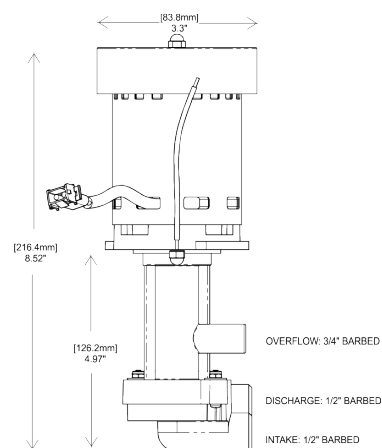
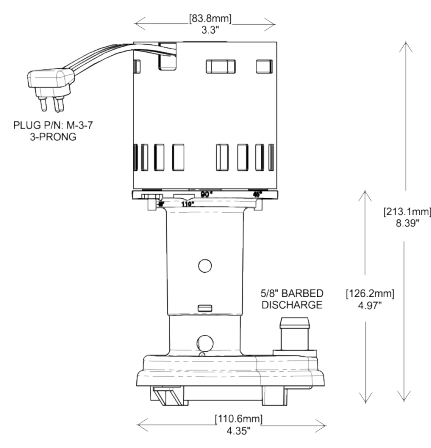
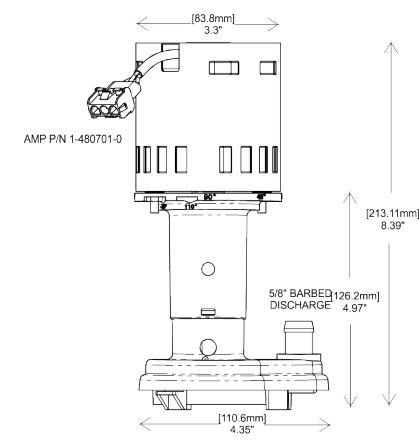
BENEFITS

- UL and NSF standard compliance
- Dual ball bearing, thermally protected motors with stainless steel shaft
- OEM-style bracket, cord and plug
- Available with a wide variety of discharge, impeller and motor options for optimal flow/ice cube production



Model # Part #	Directly Replaces
HRIM-1-115 #803599	GPP-5SC-1A GPP-5SC-1B GPP-5SC-1C
HRIM-2-115 #803600	GPP-5SC-1
HRIM-3-120 #803601	GPPS-1SC-1
HRIM-4-230 #803602	GPP-5SC-4A GPP-5SC-4B GPP-5SC-4C
HRIM-8-230 #803606	GPP-6SC-4FS
HRIM-10-115 #803608	GPP-4SC-1FSA* *Need 5/8 adaptor GPP-4SC-1FSB GPP-6SC-1FS
HRIM-12-230 #803610	GPP-5SC-4B
HRIM-14-115 #803612	GPP-3S-1 GPP-4S-1
HRIM-16-230 #803614	GPPS-2SC-2 GPP-3S-2 GPP-4S-2
HRIM-21-115 #803619	GPP-1MH-1P
HRIM-22-230 #803620	GPP-1MH-2P GPP-3MH-2P GPP-4MP-2P GPP-3MH-2P6
HRIM-26-115 #803624	GPP-1MH-1P (3PIN)
HRIM-29-230 #803627	GPP-1MH-2P (3PIN) GPP-3MH-2P (3PIN) GPP-4MH-2P (3PIN) GPP-3MH-2P6 (3PIN)

Max Lift	2' (0.6 m)	4' (1.22 m)	6' (1.8 m)	12' (3.7 m)	Voltage	Hz	Amps	Watts	Electrical hp	Inlet Size	Outlet Size	Power Cord
10' (3.05 m)	1.8 GPM (7.0 LPM)	1.22 GPM (4.73 LPM)	0.9 GPM (3.49 LPM)	-	115	60	0.85	98	0.13	Open Bottom	5/8" (16 mm) Barbed	Cord With AMP 1-350347-0
10' (3.05 m)	3 GPM (11.6 LPM)	2.6 GPM (10 LPM)	1.7 GPM (6.6 LPM)	-	115	60	0.41	48	0.06	Bottom Filtered	1/2" (12.7 mm) Barbed	1/" Tab Terminal & AMP 40725
8' (2.43 m)	7.6 GPM (29 LPM)	6.5 GPM (25.2 LPM)	5 GPM (19.4 LPM)	-	115	56/60	0.41	48	0.06	1/2" (12.7mm) Barbed	Outlet 1/2" (12.7 mm) Barbed, Overflow 1/2" (12.7 mm) Barbed	Cord With AMP 1-350347-0
8' (2.43 m)	7.6 GPM (29 LPM)	6.5 GPM (25.2 LPM)	5 GPM (19.4 LPM)	-	208-230	56/60	0.30	70	0.09	Open Bottom	5/8" (16 mm) Barbed	Cord With AMP 1-350347-0
10' (3.05 m)	10 GPM (38.8 LPM)	8 GPM (31 LPM)	6 GPM (23.3 LPM)	-	208-230	56/60	0.49	112	0.15	Open Bottom	3/4" (19 mm) Barbed	Cord With AMP 1-350345-0 & AMP 61627
10' (3.05 m)	9.5 GPM (36.8 LPM)	6.5 GPM (25.2 LPM)	5.8 GPM (22.5 LPM)	-	115	56/60	1.52	175	0.20	Open Bottom	3/4" (19 mm) Barbed	Cord with AMP 1-350345-0 & AMP 40725
4' (1.2 m)	4.8 GPM (18.64 LPM)	2 GPM (7.7 LPM)	-	-	208-230	56/60	0.41	95	0.12	Open Bottom	5/8" (16 mm) Barbed	Cord with AMP 1-350345-0 & AMP 40725
8' (2.43 m)	7.6 GPM (29 LPM)	6.5 GPM (25.2 LPM)	5 GPM (19.4 LPM)	-	115	60	0.85	98	0.13	Open Bottom	5/8" (16 mm) Barbed	Cord with AMP 41274
16' (4.87 m)	14 GPM (54.3 LPM)	12.5 GPM (48.5 LPM)	10.8 GPM (41.9 LPM)	5.6 GPM (21.7 LPM)	208-230	56/60	0.54	125	0.17	1" (25mm) Straight	Outlet 1" (25 mm) Straight Overflow 3/4" (19 mm) Straight	Cord With AMP 1-350345-0 & AMP 61627
3' (0.9 m)	2.3 GPM (8.9 LPM)	-	-	-	115	56/60	0.26	30	0.04	Open Bottom	5/8" (16 mm) Barbed	Cord 3 Pin Plug M-3-7-3- Prong
3' (0.9 m)	2.3 GPM (8.9 LPM)	-	-	-	230	56/60	0.16	36	0.05	Open Bottom	5/8" (16 mm) Barbed	Cord 3 Pin Plug M-3-7-3- Prong
3' (0.9 m)	2.3 GPM (8.9 LPM)	-	-	-	115	56/60	0.26	30	0.04	Open Bottom	5/8" (16 mm) Barbed	Lead with AMP- 1480701-0
10' (3.05 m)	7.8 GPM (30.2 LPM)	4.8 GPM (18.6 LPM)	2.8 GPM (10.8 LPM)	-	230	56/60	0.30	70	0.09	Open Bottom	5/8" (16 mm) Barbed	Lead with AMP- 1480701-0

HRIM-1-115**HRIM-2-115****HRIM-3-230****HRIM-4-230****HRIM-8-230****HRIM-10-115****HRIM-12-230****HRIM-14-115****HRIM-16-230****HRIM-21-115 / HRIM-22-230****HRIM-26-230 / HRIM-29-23**

Drain Pan Safety Switch

J-100

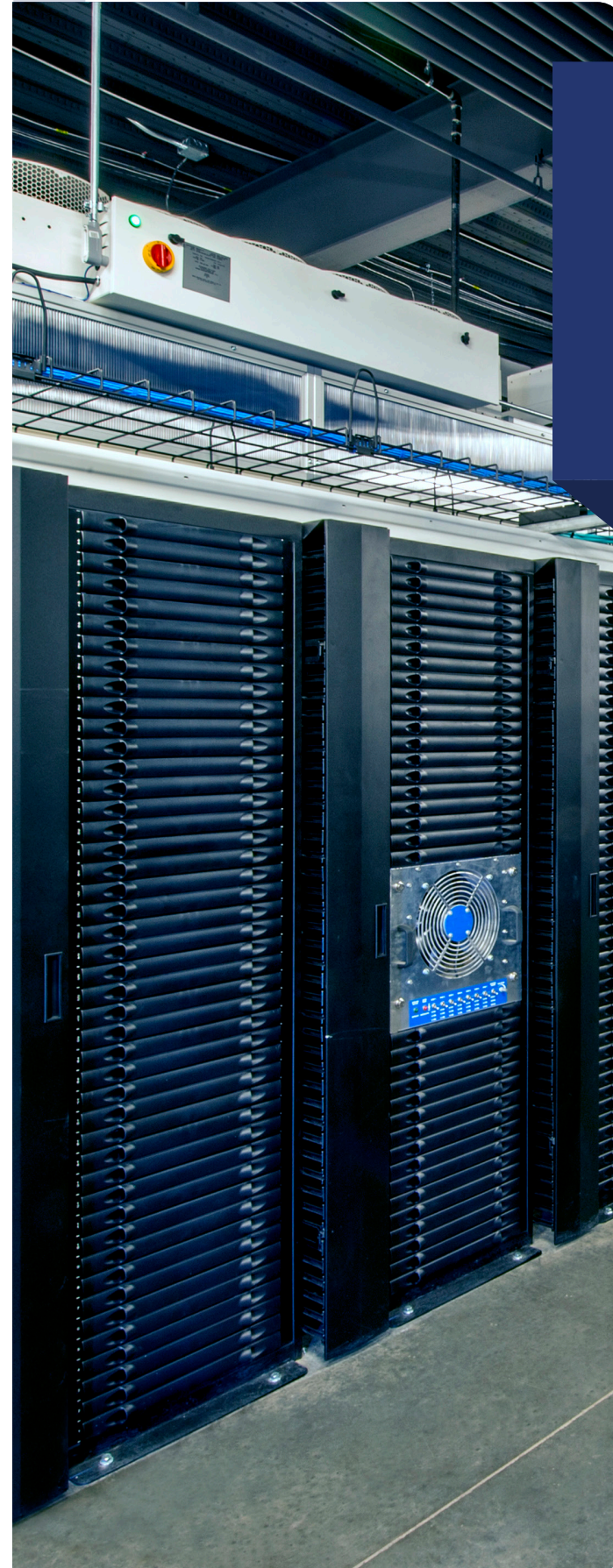
Hartell's J-100 drain pan safety switch is a water-level sensing device that is designed to shut down the air conditioning or refrigeration unit in the event of a high water level in the pan or reservoir. The J-100 switch may be wired to trigger an alarm or buzzer if the water levels become too high. The switch may be wired in normally open or normally closed position. The kit comes complete with 72" leads.

KEY FEATURES

- **Max temp:** 122°F (50°C)
- **Voltage:** 125-250 V
- **Power Cord Type:** Cables
- **Power Cord Length:** 6" (15 cm)
- **Dimensions:** 6 x 4 x 6" (15 x 10 x 15 cm)
- **Weight:** 1 lb (0.5 kg)

BENEFITS

- Oil- and chemical-resistant materials
- 72" leads for flexible installation
- Easily mounted on most drain pans
- Safe for either AC or DC (low-voltage) applications
- Switch rated to 250 VAC/4 A max
- Can be wired with contacts either normally closed or normally open
- A MUST for attic installations!
- Prevents damage to ceilings and floors in the event of a clogged drain pan
- Satisfies most local codes requiring a safety device on the secondary condensate drain pan



Contact & Support

hartell.com

United States Office

100 E Graham Pl. Burbank, CA 91502
215.322.0730
info@hartell.com

Europe Office

North Hylton Road, Sunderland SR5 3JD
+44(0)1915.491.212
info.europe@hartell.com



An Ingersoll Rand Business