



ROBUSCHI®

BLOWER
AND PUMP
AFTERMARKET
SOLUTIONS
**PROTECT YOUR
INVESTMENT**

**GENUINE
PARTS**



SERVICE



Purchasing Robuschi equipment, including lobe and screw, turbo, or centrifugal blowers and liquid ring vacuum or centrifugal pumps represents a significant investment for your business. Once you make the decision to purchase one of our products, our value-added aftermarket services will provide you with peace of mind, increased running efficiency, and provide you with satisfaction for the lifetime of your Robuschi product.

Make Robuschi your Perfect Aftermarket Partner.

We actively support Robuschi products throughout their lifetimes - whether that's through routine maintenance, immediate service, OEM spare parts, service kits or hiring fleets.

Our customers can count on our widely available network of authorised service centres all over the world.

FULL SET OF SERVICE PACKAGES TO HELP SUSTAIN THE ENVIRONMENT

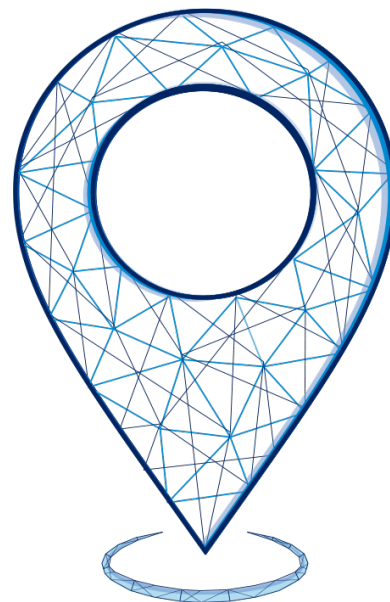
Service agreements, proactive maintenance and genuine spare parts can have a big impact on the environment. In fact, an intelligent system maintenance strategy avoids costly unscheduled production interruptions as well as unnecessary wear and an increased use of materials for undue maintenance. Furthermore, optimal system efficiency lowers energy consumption and reduces not only your environmental impact but also operating costs.

The perfect partner for your evolving needs.

INSTANT ACCESS TO YOUR NEEDS



It's quick and easy to get all the aftermarket information on your Robuschi Screw and Lobe blowers. Simply scan the QR code labelled on your units.



- **Easy and user-friendly access to all aftermarket information**

- **“Sustainable” approach without the need for printing**

On-demand access to the Service and Maintenance Manuals whenever you need them

- **Convenient and fast**

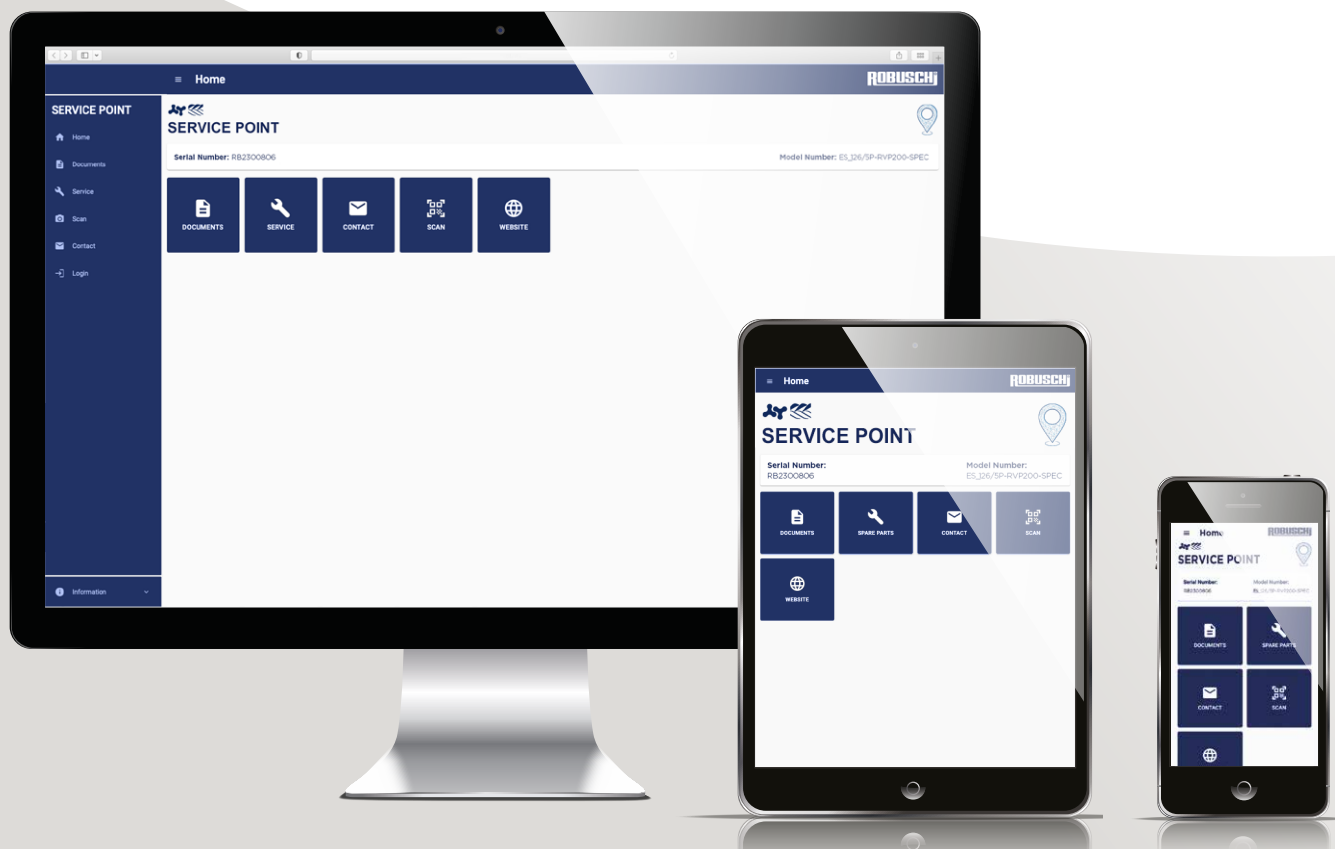
Access the main spare parts and service kits instantly based on the serial number of your lobe or screw blower

- **Tailored to your needs**

Whether you want to place an order or request a quotation you have all the information you need in front of you

- **Accessible from anywhere**

Always active and accessible from all platforms - whether it's from the PC on your desk, or on-site using a tablet or smartphone.





MAKE IT **ORIGINAL** **GENUINE OEM PARTS**

Maximum Uptime and Extended Performance

Robuschi genuine spare parts are manufactured to the same standard as our blowers and pumps.

Turn to Robuschi genuine spare parts to guarantee the performance of your blowers and pumps.

WE GUARANTEE

EXACT FIT



By choosing Robuschi genuine spare parts, you can ensure optimum performance from your blowers and pumps. The components are developed with care and designed to maximize product performance, providing the best protection for your investment.

ENERGY SAVINGS



Genuine spare parts have been carefully designed to optimize the operation and life of your equipment, saving you energy in the process. Non-Genuine spare parts have a shorter life expectancy and lead to higher energy consumption meaning an increasing cost of ownership.

WARRANTY



Our genuine spare parts come with a 12 months warranty to give you the peace of mind you need.

HIGH QUALITY



Robuschi genuine spare parts are manufactured with the same high-quality material as our blowers and pumps. You can be sure they are built to last and extend the life of your investment.



Advantages at a glance

- Cheaper than buying parts separately
- All necessary parts in one single package labelled with a single reference number:
 - Easy to identify and use
 - Simple to specify and order
- Ensure a quick repair and minimum down time
- Maintain product warranty
- Each kit contains Robuschi branded OEM parts



SERVICE KITS



An easy and cost-effective solution to perform preventative maintenance on your blowers and vacuum pumps.

Each service kit is specifically designed to meet the requirements of our product.

Each service kit contains all the required spare parts in one convenient package to help minimize maintenance intervals and downtime, as well as reduce the time spent performing maintenance or repairs.



**GENUINE
PARTS**



LONGLIFE: YOUR LOBE AND SCREW LUBRICANT ASSET

LongLife by Robuschi is a complete range of lubricants, created to fulfil the highly demanding requirements of lobe and screw blowers.

Our blowers are renowned for operating in many diverse environments all over the globe. Both in terms of operational requirements and local ambient conditions. The use of Robuschi LongLife Oil is the best way to ensure continuous operation at peak performance and guard against premature

failure and oxidization. When the correct grade for your local environment is selected, it will allow your blower to continue to operate efficiently and safely, avoiding costly downtime.

Decades of experience in the low-pressure market led our engineers to formulate a unique blend of fully synthetic oils that deliver excellent wear protection and good ageing stability to protect your investment and keep you productive.



PERFORMANCE TABLE BASED ON THE OPERATING TEMPERATURE REQUIRED

Oil type & Part number	Ambient Temperature																Discharge Temperature (T2)	
	-30°C	-20°C	-10°C	0	10°C	20°C	30°C	40°C	50°C									
LongLife Lobe H																		> 130°C
RB2153790964-1L										✓	✓	✓	✓	✓				
RB2149240964-5L										✓	✓	✓	✓	✓				
RB2149250964-20L										✓	✓	✓	✓	✓				
LongLife Lobe M																		from 100°C to 130°C
RB2149220964-5L										✓	✓	✓	✓					
RB2149230964-20L										✓	✓	✓	✓					
LongLife Lobe C																		< 100°C
RB2149200964-5L			✓	✓	✓	✓	✓	✓	✓									
RB2149210964-20L			✓	✓	✓	✓	✓	✓	✓									
LongLife Lobe GX																		Used under specific operating conditions - Consult with Robuschi
RB2151580964-5L																		
RB2151590964-20L																		



✓ Where oils of different viscosities (e.g. H&M) have overlapping 'operating windows' with regard to ambient temperature, where the ambient temperature is at either the lower or higher end of the oils operating parameters, choose the corresponding lower or higher grade respectively. If in doubt consult your nearest Robuschi Agent/Dealer.



PERFORMANCE TABLE BASED ON THE OPERATING TEMPERATURE REQUIRED

Oil type & Part number	Ambient Temperature										Discharge Temperature (T2)
	-30°C	-20°C	-10°C	0	10°C	20°C	30°C	40°C	50°C		
LongLife Screw H											> 130°C
RB2151560964-5L							✓	✓	✓	✓	
RB2151570964-20L							✓	✓	✓	✓	
LongLife Screw M											from 100°C to 130°C
RB2151540964-5L						✓	✓	✓	✓		
RB2151550964-20L						✓	✓	✓	✓		
LongLife Screw C											< 100°C
RB2151520964-5L		✓	✓	✓	✓	✓	✓				
RB2151530964-20L		✓	✓	✓	✓	✓	✓				
LongLife Screw F*											Used under specific operating conditions - Consult with Robuschi
RB2149180964-5L											
RB2149190964-20L											

* Recommended for forced lubrication



Benefits at a Glance

- Wide a range of viscosities, from ISO 100 to ISO 320. Whatever the ambient conditions might be, we have the right oil for your lobe and screw blower
- Excellent oxidative stability assures longer service lif
- Excellent rust and corrosion resistance protect the internal compressor components
- Low foaming tendency improves performance
- Good demulsibility helps to protect the equipment protection from the wear of reduced product maintenance

For our **customers in the Food & Beverage Industry** and those with specialized requirements where strict considerations are paramount, we offer a certified '**food grade**' oil. For more details, contact our engineers.

TRUST IN **ROBUSCHI** **AUTHORISED** SERVICE CENTRES

Your machines will continue to run efficiently and deliver the critical output you require!

To keep your plant up and running, Robuschi Service Centres can quickly evaluate and repair your lobe and screw blowers, vacuum and centrifugal pumps using original designs, and certified parts. We guarantee to bring you back to OEM performance, complimented with a 12-month warranty.

Regular servicing and professional maintenance strategies help to significantly extend a system's life cycle. We use highly qualified service specialists – either on site at the customer's facility or in one of our local service centres.

Locally based engineers are ready to come to your site, when you need them.

We have the experience and expertise to carry out planned routine maintenance programmes leaving our clients free to focus on their core activities while minimizing disruption.

We offer complete service packages – designed to avoid costly downtime and expensive compromises. With our service packages, you can benefit from:

- **Regular inspection and maintenance**
- **Preventive maintenance, advice and system diagnosis**
- **Upgrade and optimization of performance**
- **Service performed on site or at our service centres**

We offer a variety of extended warranties and preventative maintenance programs designed to suit you and your needs.





REGULAR SERVICING PROVIDES YOU WITH THE PEACE OF MIND

Servicing intervals vary depending on the product range, application and site conditions. To this end, they have been optimised to maximise the efficiency of wearable parts while minimising the risk of downtime to your machines.

Frequencies of each service have been determined by the Robuschi engineering team, with the aim of maximising the lifetime of wearing parts and ensuring the running efficiency of your investment.

AUDITS



Identify inefficiencies in your blower installation with professional energy audits. Whatever your goal, we can partner with you to create the best solution for your business. Our audits provide:

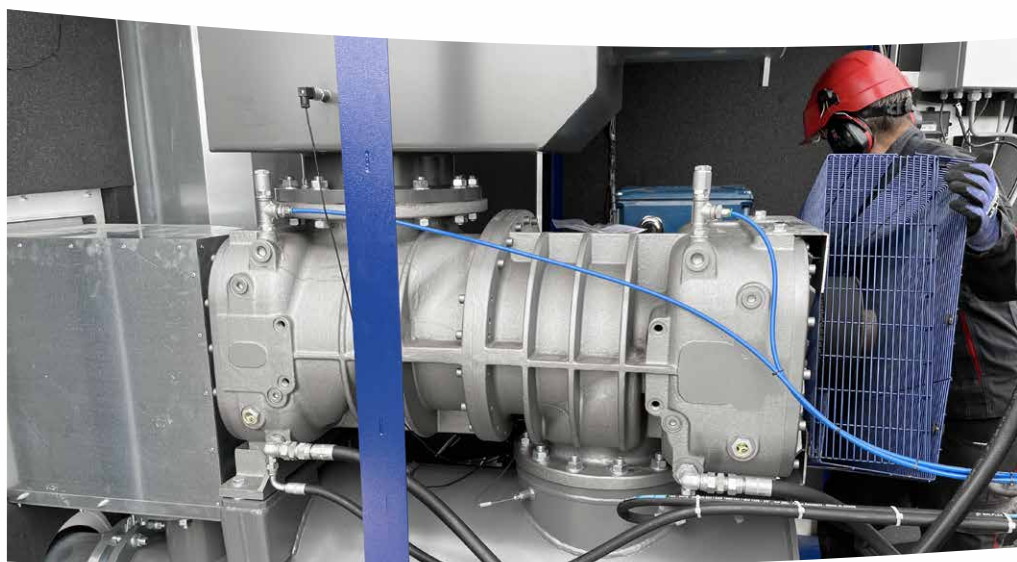
- Efficiency monitoring
- Leak management
- Cost allocation
- Point of use measurement
- Pressure loss

PREVENTATIVE MAINTENANCE



Backed by our certified service professionals, Robuschi can help you implement a regular service routine to improve efficiency and reliability while reducing downtime. We provide:

- System diagnostics
- Equipment assessment
- Maintenance on identified components
- Consumables replacement



ROBUSCHI RENTAL SOLUTIONS: LOBE AND SCREW BLOWERS

THE ULTIMATE IN FLEXIBILITY FOR YOUR
PEACE OF MIND!

Looking for an interim solution for your plant?

Need a quick response so you don't miss days of
production?

Rely on the Robuschi rental fleet!

Whether you need the machines only for a short
period or for a longer period, we offer lobe and screw
blowers for rent.



ROBOX

SCREW



ROBOX

LOBE



Your benefits at a glance

- Timeliness of response: rental solutions can be arranged on short notice
- Flexibility: you choose the duration of the rental with the possibility of extension
- Don't waste money: take the time to make an investment decision
- Risk reduction: possibility of short-term adjustments to cope with fluctuations in sales without the cost of investment
- Minimal downtime reduction: short-term solutions for urgencies

Our training courses can be delivered at our facilities or we can deliver tailored training at a location or venue to suit your location and availability.



* Note that geographical limitations apply.





An Ingersoll Rand Business



Full Spectrum of Technologies

Robuschi provides solutions that combine superior efficiency, low noise emission, small footprint, minimum maintenance, competitive operating costs and long service life thanks to the wide range of Lobe, Screw, Turbo, Side Channel and Multistage Blowers, Liquid Ring Vacuum Pumps and Centrifugal Pumps.

View our product range
scan the QR code



www.robuschi.com

GARDNER DENVER S.r.l. **Divisione ROBUSCHI** **Manufacturing facilities**

Via S. Leonardo, 71/A
43122 Parma - Italy

GARDNER DENVER **NEDERLAND B.V.**

Barwoutswaarder 3
3449 Woerden
Netherlands

GARDNER DENVER Ltd. **United Kingdom**

Claybrook Drive,
Washford Industrial Estate
Redditch, B98 0DS
UK

INGERSOLL RAND **Schweiz AG**

Langfeldstrasse 90
CH - 8500 Frauenfeld
Switzerland

GARDNER DENVER **Schopfheim GmbH**

Johann-Sutter-Straße 6+8
79650 -Schopfheim
Germany

GARDNER DENVER S.A.S. **Division produits industriels**

70 avenue Albert Einstein
Zone du Château d'Eau
B.P. 50061 - F-77551
Moissy Cramayel Cedex
France



CONTACT US



 FOLLOW US