



ELIM RB-DV 65

Fruitland Eliminator package offers a quiet and simple modular solution for all mobile vacuum truck applications. The Eliminator RB-DV 65 offers the reliability of the RB-DV 65 three lobe PD blowers that can operate at high vacuums without overheating.



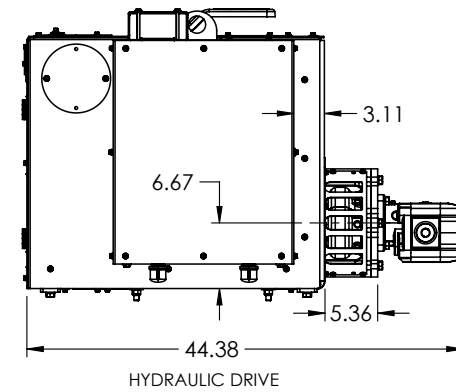
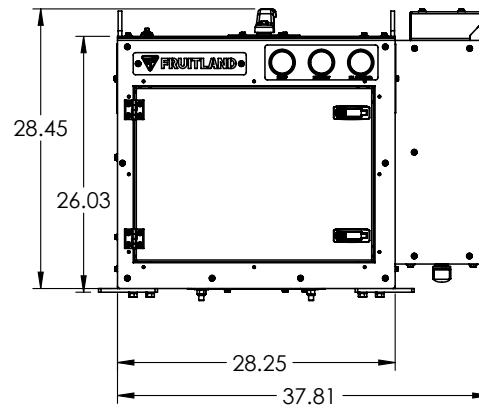
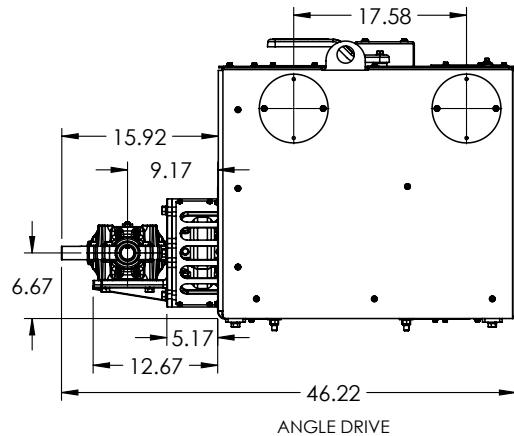
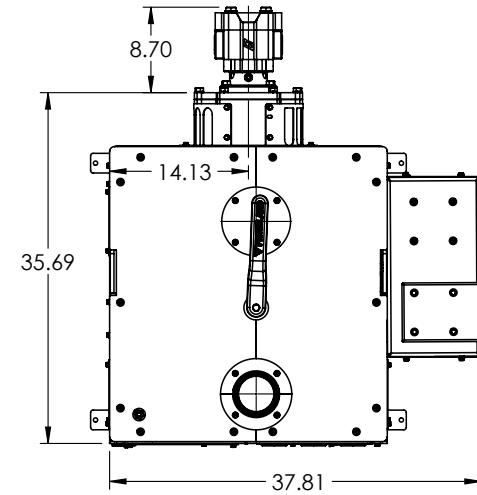
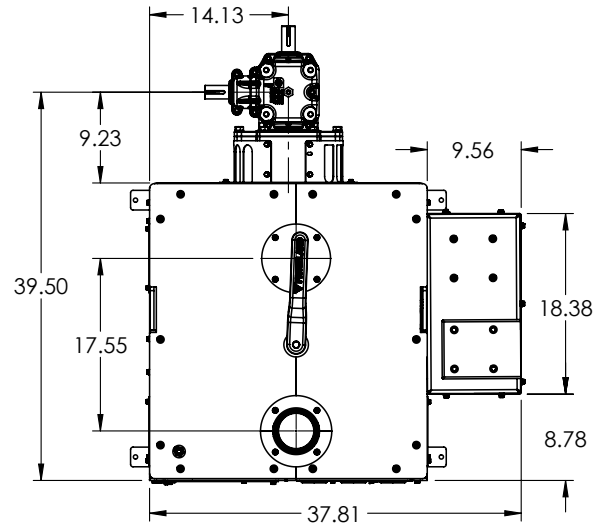
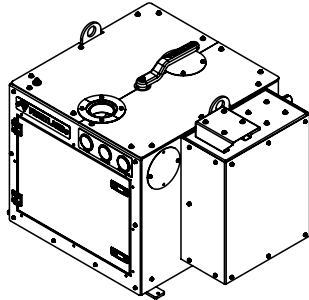
FEATURES

- Corrosion resistant stainless steel enclosure suitable for outdoor environment and side chassis installation
- Integrated 4-way valve for pressure or vacuum operation
- External secondary shutoff
- Integrated silencer is mounted externally to enclosure while remaining fully connected to the system
- Options for right angle gearbox or C-face hydraulic adapter
- Market leading performance for footprint

SPECIFICATIONS

- Approximate Free Air Flow: 912 CFM
- Maximum Vacuum: 28"Hg
- Power Required @ 27" Hg: 48.9 HP
- Power Required @ 10 PSIG: 38 HP
- Power Required @ 15 PSIG: 52 HP
- Maximum Pressure: 15 PSIG
- Connection Size: 4"
- Continuous Duty Maximum Speed: 4500 RPM
- Intermittent Duty Maximum Speed: 4800 RPM
- Approximate Net Weight: 1100 Lbs





PERFORMANCE

| | VACUUM BLOWER | SPEED | WEIGHT | 30% 9 inHg | | 50% 15 inHg | | 60% 18 inHg | | 70% 21 inHg | | 80% 24 inHg | | 85% 25.5 inHg | | 90% 27 inHg | | 93% 28 inHg | |
|----------------------|---------------|-------|--------|------------|------|-------------|------|-------------|------|-------------|------|-------------|------|---------------|------|-------------|------|-------------|------|
| | | | | CFM | BHP | CFM | BHP | CFM | BHP | CFM | BHP | CFM | BHP | CFM | BHP | CFM | BHP | CFM | BHP |
| MODEL | 65 | 2000 | 1100 | 312 | 7.8 | 272 | 12.6 | 224 | 14.7 | 176 | 17.4 | - | - | - | - | - | - | - | - |
| | | 2500 | | 405 | 10.1 | 371 | 16.1 | 318 | 18.8 | 265 | 22.1 | 200 | 25.2 | - | - | - | - | - | - |
| | | 3000 | | 500 | 12.7 | 465 | 20.0 | 412 | 23.5 | 359 | 26.8 | 300 | 30.8 | 176 | 32.6 | - | - | - | - |
| | | 3500 | | 595 | 15.5 | 559 | 24.0 | 506 | 28.1 | 453 | 32.8 | 394 | 36.2 | 282 | 38.9 | - | - | - | - |
| Q _G (CFM) | 912 | 4000 | | 691 | 18.8 | 647 | 28.4 | 618 | 33.5 | 547 | 37.5 | 494 | 42.9 | 371 | 45.6 | * | 48.9 | - | - |
| | | 4500 | | 786 | 22.4 | 735 | 32.8 | 694 | 38.7 | 647 | 44.1 | 582 | 49.6 | 459 | 52.3 | * | 54.9 | - | - |
| | | 4800 | | 843 | 24.8 | 794 | 36.3 | 735 | 42.1 | 706 | 47.6 | 647 | 53.6 | 529 | 56.5 | * | 59.6 | BO | 61.6 |

* The RB-DV family can operate at vacuum levels up to 93% below atmospheric pressure. Flow values can vary greatly at vacuum levels below 85% atmospheric pressure; please contact Fruitland Manufacturing customer service for specific flow calculations based on site conditions.

BO = Blank off

FL-ELIM-RB-DV-65_11-25

