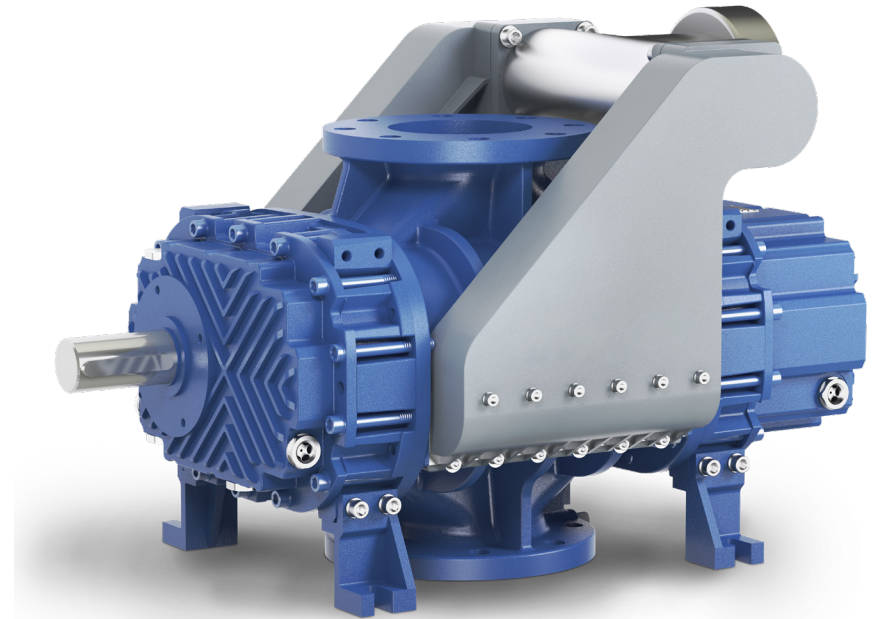




FRUITLAND

RB-DV 45 SERIES

RB-DV series of rotary three lobe PD blowers can operate at high vacuum levels due to a patented device that injects atmospheric air. This allows the blower to operate at maximum vacuum without overheating.

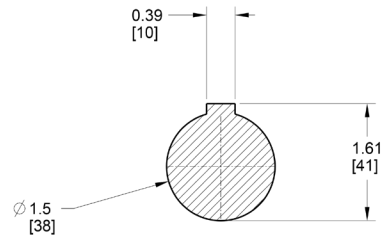


FEATURES

- Vacuum rate up to 93% (blank off) - 28" Hg & 90% -27" Hg continuous
- Gases and vapours can be handled
- Lack of sliding parts, reduces wear
- Safe operation environmentally friendly
- No oil mist

SPECIFICATIONS

- Approximate Free Air Flow - 494 CFM
- Maximum Vacuum - 28" Hg
- Power Required @ 27" Hg - 30 BHP
- Power Required @ 28" Hg - 31 BHP
- Power Required @ 10 PSIG - 19 HP
- Power Required @ 15 PSIG - 26 HP
- Max Pressure - 15 PSIG
- Size of Hoses - 4"
- Max Input Speed - 5000 RPM
- Approximate Net Pump Weight - 214 Lbs



SECTION A-A
SCALE 1.000

